



FEBT Track Crew members replace and reposition ties in Track 3 in the foreground, as the Young Easties do the same closer to the Orbisonia Station in the background on November 1, 2025. – Al Gallo photo

IN THIS ISSUE:

Winter <i>Timber Transfer</i> is in the Mail	3
Could You Be a Tour Guide? Take Our Quiz	3
EBT Archives Publicly Releases ICC Mechanical Field Notes	5
Young Easties Tackle Track Work	6
November 2025 Rockhill Work Session Notes	7
Slow But Steady in Robertsdale in November	9
Wants and Needs: The Company Store Needs You	10
November Volunteers	10
FEBT's Track Gang Enjoys Great Job Security	11
November Campaign-Supported Accomplishments	13
November Fundraising Update	15
Company Store Item of the Month	17
Upcoming Events	18
Upcoming Rockhill Furnace Volunteer Sessions	18
FEBT Museum Schedule	18

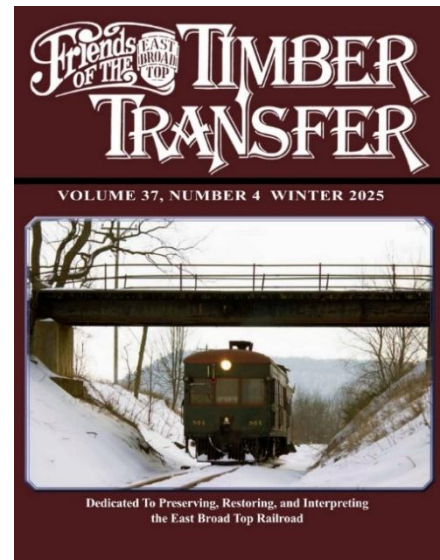


The first Christmas in Coal Country train of the season makes its way southbound down McMullen's Summit. – Doug Davenport photo

WINTER *TIMBER TRANSFER* IS IN THE MAIL

The winter edition of your other favorite FEBT publication is on its way to you. In this issue, you will find an article on the creation of the Rockhill Shops Complex by Vagel Keller, the third installment of Lee Rainey's series on EBT passenger equipment, and Early 1900s Mount Union Engine and Freight Facilities by Ron Pearson and Ric Case. For digital-only readers of *Timber Transfer*, the download option from the Company Store will be available soon. — Doug Davenport

COULD YOU BE A TOUR GUIDE? TAKE OUR QUIZ



When the EBT decided early this year to make shop tours free for anyone purchasing a train ticket, the guess was that around five percent of visitors would take advantage of the offer. Instead, more than half are choosing to take the hour-long guided tours, which start in the Freight Office and proceed to the Roundhouse and the Shops.

This is a welcome surprise, but also a challenge. Tours are now offered four or five times a day, but sometimes so many people show up that the group has to be split in two — or even three for special events. The railroad has been fortunate to have eight volunteer tour guides available this year through FEBT, but almost all do other things around the property as well, serving as train-crew members, Robertsdale tour guides, extended tour guides, or trolley operators. Staff members regularly get called on as backup.

So we're looking for reinforcements for 2026. Do you have what it takes? Tour guides have more interaction with visitors than just about anyone else at the EBT, and more opportunity to make a great impression. The assignment requires being personable, patient, safety-minded, and enthusiastic — plus, of course, knowing the basics of EBT history (for years Lee Rainey was the regular tour guide). We can train you.

Tour guide Steve Jackson talks with EBT visitors in the Main Shop. — Lawrence Biemiller photo

Here's a quick quiz to whet your interest:

1. What important EBT figure began his career as a telegraph operator? (Extra credit: Where is he buried?)
2. What is a pit jack? A slip roll? What's beneath the line of metal plates between the Main Shop and the Blacksmith Shop?
3. What two prominent companies supplied parts for the M-1?
4. Whose automobile burned up in the bus-garage fire? What make was it? (Extra credit: What possibly-related item is now in the EBT Archives & Special Collections?)
5. Why is the Long Fill called that? Where is the Muleshoe Curve?
6. What is the Chance Sand Flotation process?
7. Who is the Millie after whom No. 12 is named? (Extra credit: What's her middle name?)
8. What is Grover Cleveland's purported connection to the EBT?
9. How many bins of parts did FEBT volunteers have to empty before stabilizing Storehouse No. 1?
10. Which EBT Foundation board member's father organized the first photo charter of the East Broad Top back in 1936?

Tour guides certainly face occasional challenges, including heat, rain, bored spouses, squirming/wailing toddlers, and railfans intent on demonstrating that they know more than you do. But many days you get to introduce friendly, interested people to the EBT's extraordinary history and its unforgettable facilities, and you come away feeling like you've added a lot to their visit. You can volunteer for as many or as few days of duty as you like. Note that tour guides, like all public-facing FEBT volunteers, must have all required current clearances for working with children.

If this sounds like something you'd be interested in, or if you have questions, email Justin Santichen (jsantichen@eastbroadtop.com) or Andrew Greene (agreene@eastbroadtop.com) at the station. If you have questions about the child clearance process, please reach out to FEBT's Child Clearance Coordinator at clearance@febt.org. And thanks!

Quiz answers:

1. Robert S. Siebert started his railroad career as a PRR telegraph operator, then was employed by the EBT from 1874 to 1881. After working for several other railroads, including the Rio Grande, he returned to the EBT as president in 1903. He's buried in the Mount Union Cemetery.
2. A pit jack lowers a wheel set from the locomotive's frame down into the transverse pit in the Locomotive Shop, or raises it back up for reinstallation. A slip roll is used to put a curve in a sheet of metal. Under the line of plates is a shaft that links two machines in the corner of the Blacksmith Shop to the Main Shop's belt-drive system.
3. The J.G. Brill Co. and Westinghouse supplied M-1 parts, and Brill supplied the design.
4. Operating Vice President C.D. Jones's Packard burned. The Archives now holds a roll of cloth labeled "Packard upholstery" that was found in the Stone House.
5. The Long Fill was originally a trestle and was later filled in, as were trestles at Pogue and Joller. The Muleshoe Curve is in the Coles Valley, between the site of the Coles station and the entrance to the Wray's Hill tunnel.
6. The Chance Sand Flotation process was used to clean coal at the EBT's coal plant in the Mount Union yard. It consisted of a concrete cone with a slurry of sand and water in which coal floated to the top and heavier waste (such as shale or clay) dropped to the bottom.
7. Millie is Joe Kovalchick's sister. At age 13, she inaugurated the tourist era at the EBT by breaking a bottle of ginger ale over the front coupler of No. 12 on August 13, 1960. Her middle name is Ann — according to Joe, because his father wanted to commemorate a million-dollar deal he had made. So Millie Ann. Get it?
8. The used-railroad-equipment dealer who sold the EBT a parlor car for President Siebert's use advertised it as having been Grover Cleveland's private fishing car, but there's little to back up such a claim. Cleveland did, apparently, own stock in the company that owned the Big Level & Kinzua, where the car previously ran, but no evidence of his having ridden or fished from the car has turned up. Nonetheless, the EBT repeated the claim regularly over the decades, and even hung a photo of Cleveland in the car. It's still there.
9. FEBT volunteers emptied 722 bins of parts in Storehouse No. 1 — and later put all the material back, freshly sorted and organized.
10. Linn Moedinger's father, William, was a longtime EBT fan and organized the 1936 photo charter.

— Lawrence Biemiller

EBT ARCHIVES PUBLICLY RELEASES ICC MECHANICAL FIELD NOTES

The East Broad Top Railroad Archives and Special Collections is pleased to release the second of our rich collections of rolling stock data generated by the EBT in response to the requirements of the Interstate Commerce Commission:
<https://ebtarchives.catalogaccess.com/exhibits/47>

A 1913 law directed the ICC to ascertain the valuation (reproduction cost) of all railroad property in the U. S, triggering a massive data collection effort by rail companies. One of the largest tasks on each railroad was to record dimensions, construction details, safety equipment, and more for each locomotive and each piece of freight or passenger rolling stock. The information gathered was recorded in the field into standard, preprinted blank books of "field notes", using standard abbreviations and notations. Later the handwritten notes were converted into typewritten summaries that were neat and legible but not always fully proofread and accurate, making the field notes the preferred source.

EBTF.2023.22.5

D. V. FORM NO. 310. PAGE 65

DATE APR 5 1921 CAR NO. 151

CARRIER EAST BROAD TOP R.R. AND C. CO. INITIALS EBT.R.R.

LOCATION ORRISONIA, PA. J.W. Palmer FOR CARRIER

J.J. Reid FOR I.C.C.

Builder EBT.R.R. ; date built 1911 ; owner's plate Boy

Bought of _____ ; date bought _____ ; kind of car \$5.00

History _____

IDENTIFICATION

1. Capacity <u>40 000 #</u> ; weight <u>19 900 #</u>	25. <u>15 Cars</u>
2. Length over end sills <u>30'-10"</u> width over side sills <u>7'-8"</u>	26. <u># 150-164 incl.</u>
3. Underframe, kind <u>Wood</u>	27. _____
4. Superstructure, kind <u>Wood</u>	28. _____
5. Center sills, kind <u>Wood</u>	29. _____
6. End sills, kind <u>Wood</u>	30. _____
7. End of car, kind <u>Wood</u>	31. _____
8. Roof, kind <u>Sheathing tin outside</u>	32. _____
9. Doors, side <u>2-63"x8'-0"</u> end _____	33. _____
10. Platforms, caboose, kind _____	34. _____
11. Bolsters, body, kind <u>Wood</u>	35. _____
12. Draft timbers, kind <u>Wood</u>	36. _____
13. Draft rigging, kind <u>Spring and air</u> <u>Miner</u>	37. _____
14. Air brake equipment schedule <u>West 8"x12"</u>	38. _____
15. Trucks, kind <u>Arch Bar</u>	39. _____
16. Truck bolsters, kind <u>Wood</u>	40. _____
17. Wheels, kind <u>S.C.I.</u> ; diameter <u>24"</u>	41. _____
18. Journals, size <u>4"x7"</u>	42. _____
19. Safety appliances <u>S.A.S.</u>	43. _____
20. _____	44. _____
21. _____	45. _____
22. _____	46. _____
23. _____	47. _____
24. _____	48. _____

GENERAL CONDITION AND DEFECTS

Roof N

Body N

Floor N

Underframe N

Trucks N

Maintenance, normal, above or below N

Service condition per cent.	Per cent.	Weight.	Net per cent.
Body	<u>14/20</u>		
Underframe	<u>14/20</u>		
Trucks	<u>14/20</u>		

Form approved June 15, 1915.

EBTF.2023.22.5 contains the handwritten volume Mechanical Field Notes of the Interstate Commerce Commission, Bureau of Valuation (96 pp.) for EBT locomotives, cars, small shop tools, and a variety of shop infrastructure. The complete set of handwritten information is available for study at the archive, and the most used portions are now available online! The collection is of great value to railroad modelers, as well as historians researching the evolution of narrow-gauge technology in general and the EBT in particular.

The EBT Archives is a conjoined operating unit between the EBT Foundation and the Friends of the East Broad Top, and thanks you for your support to protect, preserve, and provide access to EBT Foundation and Friends of the EBT collections!

*Mechanical Field Notes.
Interstate Commerce
Commission, Bureau of
Valuation, p. 65. July 1921.
- EBT Archives collection,
EBTF.2023.22.5*

YOUNG EASTIES TACKLE TRACK WORK

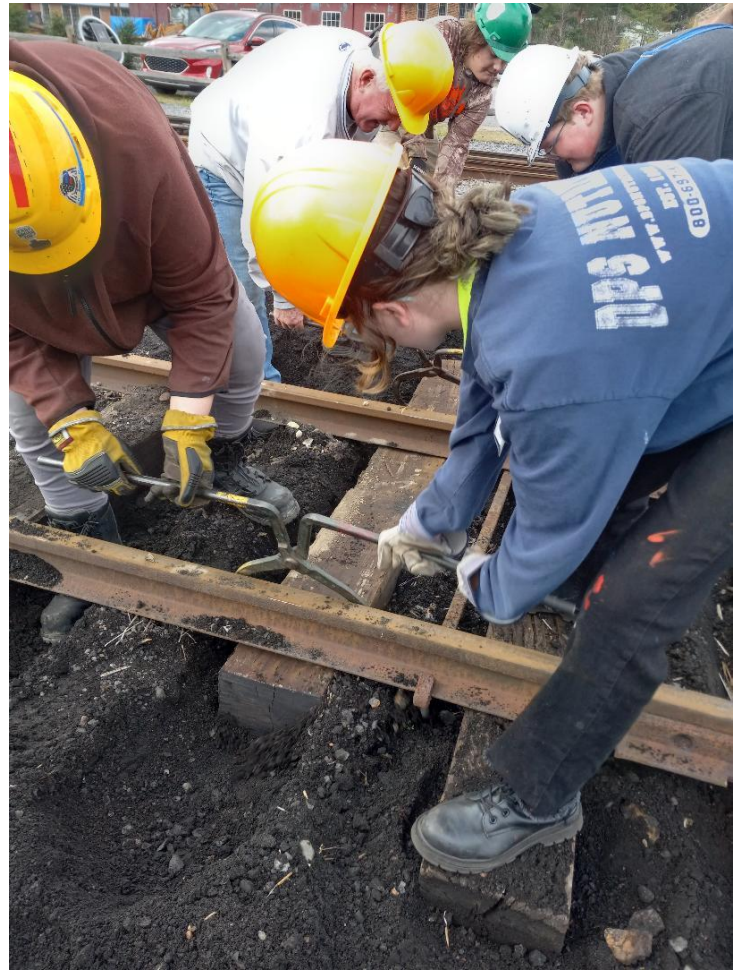
The last scheduled event in this year's Young Easties program took place on Saturday, November 1. Seven teens, accompanied by five parents/grandparents, tackled tie replacement on Track 3 in the Rockhill yard. The teens supplemented the work being done a bit further south on the same yard track by adult volunteers who were taking part in the final FEBT Work Weekend of the year.

The young people managed to install quite a few ties. In addition, they re-spaced many more of the existing ties that didn't require replacement, obtaining a 22-inch spacing of the newly-installed and existing ties. This spacing assures better weight distribution. It also allows for better access for the railroad's mechanical tamping machine to access the track structure.

Looking back over this season's offerings, our average participation and attendance has been in the five-to-seven teens per session range. We're delighted to be able to say that we've welcomed some new participants (but are always eager to welcome more!). We were forced to cancel one of our offerings this year, due to low participation. Our offerings have been varied, encompassing an introduction to the railroad's archives, and overview of the railroad's daily operation, a look behind the scenes of the duties that the locomotive engineer must consider, the geological structure of the Broad Top Coal Field, and hands-on projects involving the painting of battens on the Boiler Shop, the painting of two hopper cars on display in Robertsdale, and track work in the Rockhill yard. Looking ahead to the coming new year, we're considering a mid-winter activity. We're also planning to establish a connection with students at the Southern Huntingdon High School (building on the unique train rides that were offered to students there a few months ago). We'd like to involve participants in an orientation session to steam locomotives in general, and to No. 16 in particular. Those are just some of the ideas that are under consideration. So, stay tuned for news about next year's plans as they take shape.

Deepest thanks to each of our teen participants, to their parents and grandparents for their support, and to our adult leaders who shepherd, guide and encourage this new generation in their quest to learn more about railroading. – *Gene Tucker*

Above: Young Easties position a tie in Track 3 during their November 2025 event in Rockhill. – Gene Tucker photo
Right: After learning about track work, the Young Easties got a chance to ride the railbikes through the Rockhill Yard. – Roy Burnham photo



NOVEMBER 2025 ROCKHILL WORK SESSION NOTES

The 2025 Rockhill Furnace work sessions wrapped up with an excellent weekend on November 1 and 2. We had an excellent turnout, with 34 volunteers on Saturday and 23 on Sunday, including four first-time volunteers. In addition, we had seven Young Easties and five parents/grandparents that participated on Saturday (see Gene's Young Easties article on Page 6). Many hands and good weather allowed for great progress on a variety of projects.

Brad Esposito kicked off the weekend with a visit to Roundhouse Stall 7 to update us on the progress of Combine 14's truck restoration by the EBTF mechanical team.

Combine 14 saw a variety of detailed tasks addressed including seat trim, final exterior trim, remaining window installations, end threshold plates installation, and bolting the center baggage compartment bench in place.

The Boxcar 174 crew cleaned and organized the interior workshop and continued fitting the poling pockets to the car.

The windows crew focused on the alley between the Machine and Boiler Shops, with final window restoration, installation, and painting being completed. This completes a multi-year effort to restore this area that included lifting the walls, replacing and painting the siding, installing new roofs and gutters, and complete window restoration.

Top: Garth Jones installs end windows in Combine 14. – Al Gallo photo

Middle: Eric Knepp puts the finishing touches on seat backs for Combine 14. – Al Gallo photo

Right: The Boxcar 174 crew prepares new poling pockets for installation. – Al Gallo photo



MEMBERSHIP BOX SCORE

The Friends of the East Broad Top
membership is up to
2242



Meanwhile, across the track from the alley, the Storehouse 2 crew was busy framing the new first floor walls with locally sawed full size 2x4 studs on top of the newly-poured foundation. Crew members also began marking and drilling additional studs that will support the stock rack rods.

In the Blacksmith Shop, our Next Gen Easties volunteers were also making great progress. The large stock rack in the northwest corner of the building that held many pieces of long heavy metal stock and was sinking into the ground, was completely emptied. This will allow the stock rack to be rebuilt, a key step in the interior restoration of the building.



Finally, the FEBT track crew and the Young Easties were both busy on Saturday replacing ties in Rockhill Track 3 (see Gene's articles on Page 11 and 6, respectively).

We've made great progress in Rockhill this year, but there is still much more to do. We can always use more volunteers to help with our many projects. If you'd like to help with these and future projects, please consider joining us! Our 2026 work session schedule is now available, and is listed on Page 18. – *Dave Bulman*



Top: The completed alley between the Machine Shop and Boiler Shop at the end of the work weekend. – Al Gallo photo

Middle: Butch Kerchenske, Vic Booth, Stephen Ramirez, and other volunteers install new first floor framing in Storehouse 2, which will allow the cribbing to be removed. – Al Gallo photo

Left: Wyatt Kindler, Jon Artz, Brad Esposito, Sam Painter, and Ben Leese move a large metal bar from the Blacksmith Shop stock rack. – Al Gallo photo

SLOW BUT STEADY IN ROBERTSDALE IN NOVEMBER

Since the last newsletter, we held our annual “Thank you” event for the museum’s volunteer hosts. I’m happy to be able to tell you that Roy Burnham, Jane Clarke, Lance Gilliland, Steve Jackson, Scarlett Wirt, myself, along with special guests Andy Van Scyoc and Al Gallo have formed The End-to-Enders club. All have now ridden the rail bikes over every bit of currently functional mainline. With the railroad not running in November, we were invited to bring the bikes down and try them on the mainline. We rode to Colgate Grove and back on one day, then to the South end and back on the next. Also, part of the event was a wonderful tour of the shops area with a discussion of all the projects through the years that have been done by FEBT. Thanks to Andy for leading that. The day we did this was a workday. I’m sure there will be a report on that in this newsletter, but I can promise you that the photos will not accurately convey the amount of activity that was going on. It was breathtakingly busy! Saturday evening, we had a great cookout and discussion. Great days! Early next year I’ll start calling for more members to become museum hosts, and remember when I do, that it’s not all work.



Railbikers pause from their rare mileage journey on McMullen’s Summit for a photo op. – Jane Clarke photo

It’s been a quiet month in Robertsdale, but quiet does not mean that nothing happened. The antenna for the improved radio system was installed. This is a significant improvement in our safety systems. Should any emergency happen on any walking tour or railbike tour, there’s now no place from which the leader of that tour cannot reach the museum to ask them to call 911. Another day’s efforts have been put into the station doors project.



The Robertsdale hoppers are in the Christmas spirit. – Pete Clarke photo

Inside and out, seasonal decorations have been put up. And just about all the leaves have fallen. There’s not a better time to come take the walking tour. You’ll never see more, and you’ve never been safer.

Both the FEBT museum and the Miners museum will be open on December 6, 13, and 20. Both will be on our winter hours schedule, open from 10:00 AM to 4:00 PM. It’s December, we expect it to be too cold to get the railbikes out – but if one of those days is 55 degrees and sunny, who knows? - Pete Clarke

WANTS AND NEEDS: THE COMPANY STORE NEEDS YOU

After many years of dedicated service both Dick Ullery and Dave Phillips are retiring from management of the FEBT Company Store. Their tireless service and sage management have made our Company Store a true success and significant factor in FEBT's bottom line. For that we can't thank them enough!

Now we need to identify their replacements and I am hoping you will step forward. While Dick and Dave did heroics, they also split the work so they could each accomplish it. Some of that work can be further divided to make it even more palatable.

The specific tasks of the manager role are to order products, track sales, manage the store accounts, and report store activity to the Board. The second role focuses more on the store technology; e-commerce, website, and point of sale systems. This requires some working knowledge of such systems or a willingness to learn the technologies, and extra time on your hands. You will find this role fun and rewarding! In both cases, additional help can always be requested.

If you are interested in taking in on either of these roles (or even just a portion) please send a note to Andy Van Scyoc at vanscyoc@gmail.com. – Andy Van Scyoc

NOVEMBER VOLUNTEERS

The following members volunteered from October 22 to November 21 in Rockhill Furnace, in Robertsdale, along the line, or remotely to support FEBT. Thanks to all FEBT volunteers for their dedicated efforts to preserve, restore, and interpret the EBT.

Bill Adams	Jon Artz
Lawrence Biemiller	Victor Booth
Alexander Brown	Dave Bulman
Wayne Cass	Jane Clarke
Craig Confair	Alex Cook
Ralph Davidson	George Dvorak
Larry Fuchs	Al Gallo
Lance Gilliland	Bobby Goldby
Steve Jacobs	Dave Johnson
Arthur Kinch	Wyatt Kindler
Daniel Lane	Ben Leese
Mathew Malkiewicz	Curtis Miller
Dave Padula	Sam Painter
Rich Poletto	John Quinn
Stephen Ramirez	Mark Reese
Bill Reynolds	Blake Rimmey
Rick Rourke	Tim Schindele
Melanie Sembrat	Russell Semen
Roger Stier	Jim Troup
Deb Tucker	Gene Tucker
Lamar Tyson	Dick Ullery
Andy VanScyoc	Mike Wahler
Bill Wheeler	John Widmeyer
Norm Wilcox	Rob Willhite
Scarlett Wirt	Brian Wolfe
Charlie Wootton	

Steve Behe	Jerry Bertoldo
John Bowie	Sue Briggs
Karen Bulman	Roy Burnham
Pete Clarke	Chris Coleman
Doug Davenport	Ray Davidowski
Dave Ebright	Jack Fornadley
Charles Geletzke Jr.	David Getty
Charlie High	Steve Jackson
Garth Jones	Butch Kerchenske
Eric Knepp	Ed Kompare
Kevin Lekas	James Loope
Bob Morningstar	Joel Myers
Tom Perman	Dave Phillips
Jon Radder	Lee Rainey



FEBT volunteers are constantly busy making great things happen in preservation. – Jane Clarke photo

FEBT'S TRACK GANG ENJOYS GREAT JOB SECURITY

The members of FEBT's Track Gang like to say that we enjoy great job security. Meaning, of course, that there's always something more to do, another task to be tackled, and a continual list of things that will demand our attention and our energies.

Of course, in addition to maintaining that truth, we also like to say that we have more fun than anyone else at the railroad. (OK, we'll admit that we're legends in our own minds, but, please, don't disturb our illusions...we kinda like them.) So, in a valiant attempt to keep our personnel engaged in constructive activities, here's what we've been up to during this reporting period.

Tending to Track 3 in the Rockhill Yard

Much of our recent work has centered around the upgrading of Track 3 in the Rockhill yard. This project involves replacement of ties requiring it, but also the re-spacing of the existing ties that don't require changing out, so as to obtain a 22-inch spacing of all ties. This allows for better weight distribution. It also allows the railroad's mechanical tamping machine to access the track structure. As I write this (on November 25), this project is about 90% complete.

Right: Track crew members carry a tie over to Track 3 to be installed on November 20. – Steve Behe photo
Below: John Quinn and Daniel Lane resize ties. – Gene Tucker photo



Care for Switch Work in the Rockhill Yard

Our personnel assisted the railroad's full-time employees in the replacement of ties in the Track 3-to-the south-leg-of the wye switches, where five ties were replaced. In addition, we replaced two headblock ties in the switch that is adjacent to the Coal Tipple. Those two headblock ties are fifteen feet long, and they weigh about 400 pounds. We were thankful to have had a large work crew that day.

Re-sizing Ties

Contributions to FEBT's fundraising campaign have permitted us to purchase a load of 240 relay crossties. These ties are coming from a new supplier. They arrived early in November. Since these ties are standard-length ties, they required re-sizing to six and seven-foot lengths. Teams of FEBT personnel used chainsaws to do that work. Others hauled off the tie butts, stacking some of them for future use in cribbing. The quality of these ties is quite good, and consistently so. We are assured that this new source of ties will permit purchasing many more in the future. Always very welcome news!

Being Good Neighbors in Saltillo

On Thursday, November 13, some of our number went to Saltillo to assist in the removal of a fallen tree that was on railroad property, but which had fallen into an adjacent property owner's yard.

Breaking Joints South of the Rockhill Yard

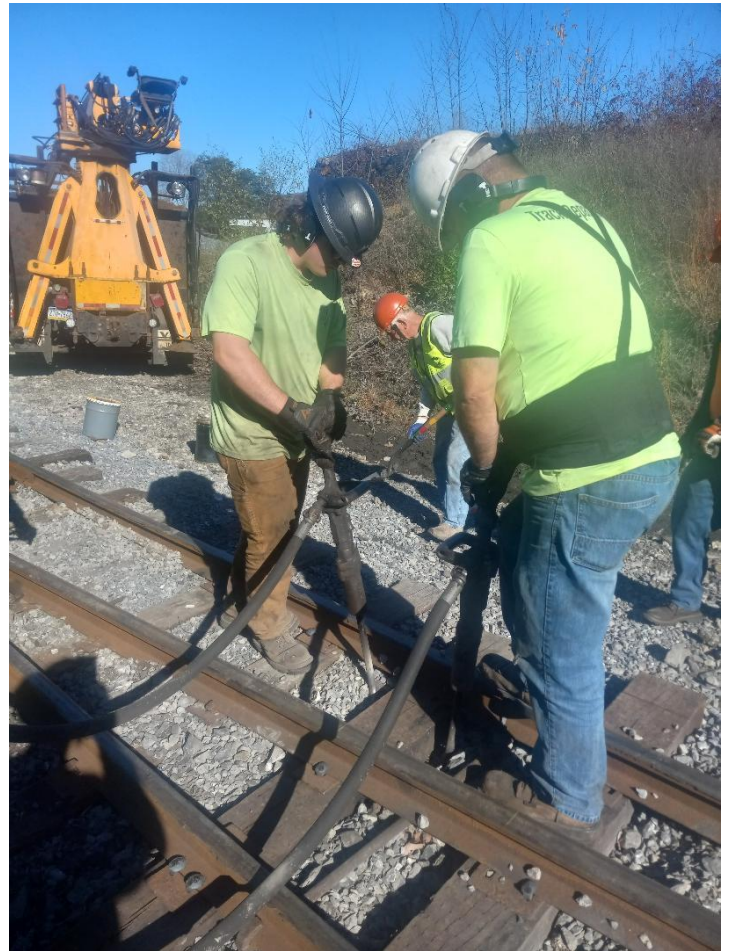
If you've ridden the line south of the Rockhill yard, and have been able to see the track structure, perhaps you've noticed two strings of rail sitting inside the gauge, and just to the east of it. That rail came off of the southern end of Track 3. On Thursday, November 20, some of our number cut the bolts in the joints, and then separated them, stacking the joint bars on the east side of the right-of-way. This will allow that rail to be re-installed in the southern end of Track 3.

Miscellaneous Work

On Thursday, November 20, some of our crew assisted in cleaning up the sidewalk along Meadow Street across from the Post Office. We also assisted with preparations for grading in Saltillo.

Making the Difference: Our People

Since the last report, thirty of our number have been active in the work described above. We are always delighted to welcome new members, and during this month, we've welcomed Rob Willhite, Francis "Butch" Kerchenske, Ben Leese and Jim Loope. Welcome, gents! – *Gene Tucker*



Top: Track crew members tamp a tie in a switch at the south end of the yard on November 4. – Gene Tucker photo

Above: The track crew works ties in Track 3 on November 1. – Al Gallo photo

Right: Daniel Lane and his ensemble start spikes in new ties in Track 3 on November 13. – Gene Tucker photo



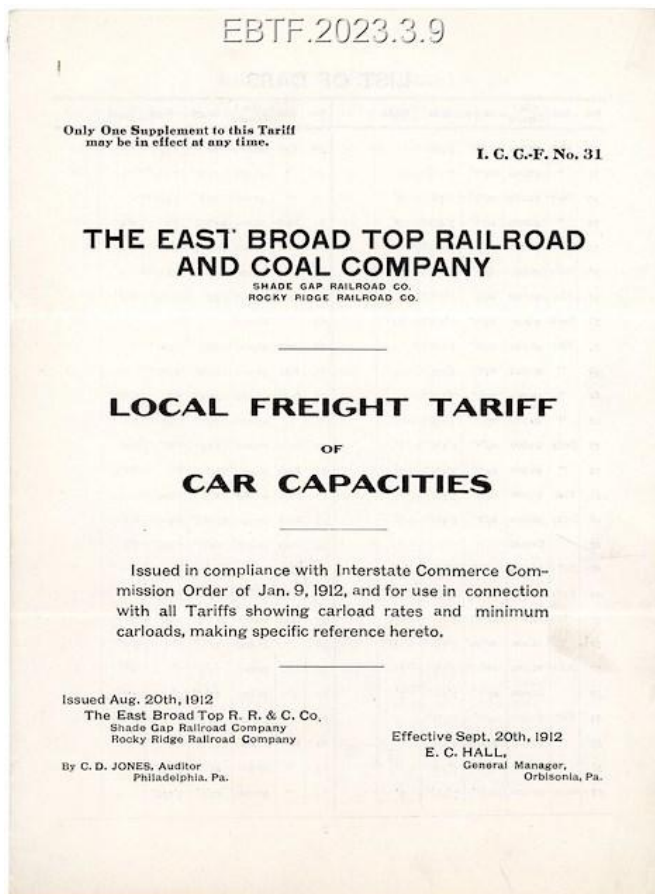
NOVEMBER CAMPAIGN-SUPPORTED ACCOMPLISHMENTS

Progress continued on multiple projects to restore the East Broad Top in November enabled by your donations to the FEBT Campaign.

New wheelsets for Combine 14 were delivered from ORX to Rockhill Furnace and are now in the roundhouse. This will allow the EBTF mechanical team to continue with the overhaul and assembly of Combine 14's trucks. Store house 2 had new first floor framing installed on the recently installed foundation, allowing the temporary cribbing and I-beams to be removed by the building mover. Also in Rockhill, the purchase of 240 additional ties funded by the FEBT campaign allowed the continued restoration of track 3.

This November, the East Broad Top Railroad Archives and Special Collections began the release of three collections containing a wealth of rolling stock data generated by the road's dealings with the Interstate Commerce Commission:

<https://ebtarchives.catalogaccess.com/exhibits/46>. The first collection released included all Car Capacity Tariffs issued by the EBT from 1912 to 1952 – a total of twelve issues – as well as supporting correspondence from the railroad's files.



Top: Combine 14's wheelsets have returned from being re-machined. – Brad Esposito photo

Above: Storehouse 2 is now self-supporting, as the newly framed walls and center posts provide structural stability without the need for cribbing any longer. – Al Gallo photo

Left: Local Freight Tariff of Car Capacities September 20, 1912 front page. – EBT Archives photo, EBTF.2023.3.9, EBT Tariffs Collection

Salttillo Station progress continued with placement of a new outside electric pole, completion of trenched conduits from the pole to the building, installation of the breaker panel and disconnect switch, and installation of wiring and receptacle and switch boxes. Plumbing work continued with the domestic water supply line connected to the city water line, the curb stop installed, and the domestic water line brought into the crawl space and the trench backfilled.



Above: Cleared and graded ROW stretching north from Saltillo Station. – Al Gallo photo

Right: Saltillo Station electrical panel, wiring and plumbing installation. – John Bowie photo

Below: Cleared ROW looking north toward Pogue from Price's Bridge. – Dave Bulman photo



The March to Saltillo moved forward in two locations. Grading and preparation of the right-of-way heading north from the Saltillo station was completed by the EBTF track staff, and the final required track materials were ordered. This will allow track restoration on this segment to begin soon (see Gene's article on Page 11) using ties purchased earlier in 2025.

Meanwhile, clearing and grading by G&H Anderson Excavating continued between Pogue siding and Price's Bridge. This month an additional 2,600 ties were ordered for this segment with initial funds from the 2026 campaign. These are key steps in the plan to begin track restoration at Pogue in 2026.

Your support of the FEBT Campaign will allow us to continue and accelerate these and other projects to preserve, restore, and interpret the EBT. The 2026 Annual Campaign began on October 1, 2025 and run through September 30, 2026. You may contact the Fundraising Treasurer at:

Karen Bulman
FEBT Fundraising Treasurer
P.O. Box 43063
Cincinnati, OH 45243

FEBT is a designated 501(c)(3) organization and donations are tax-deductible in the U.S. – *Dave Bulman and Karen Bulman*

NOVEMBER FUNDRAISING UPDATE

Thanks to our very generous donors, we are off to a strong start on the 2026 Campaign. November donations totaled \$70,146 in 265 donations. Please know that the FEBT appreciates your help to support its goals of restoring, preserving, and interpreting the East Broad Top Railroad. Thank you!

2026 Campaign Goal:

\$350,000

October Donations:

\$70,146

Campaign Total:

\$110,710 – 31.6%

November donors*:

David A. Ackerman	Stephen Adik	Walter Albers	Fr. Alexei Alexiev
Lawrence E. Altoff	Richard Anderson	Beth Ann Andrews	William Bailey
Mark Baker	Wayne Baldwin	Margarite Bane	William Barnes
Robert Bayles	John Beck	Vincent Bellafiore	Dennis Best
Michael Bezilla	Thomas M. Billy	Tim Bittner	Ralph R. Bitzer
Douglas O. Blount	Casper Bocklage	John R. Bowie	Alexander Bowser
Charles Bradley	James A. Brehm	Frederick Breimyer	James Brickley
Larry Brough	Tom Brown	Margaret Brucker	Charles Brumbelow
Lance Burkholder	Graham Buxton	Peter Byers	Robert G. Caccese
David H. Capp	Wayne & Jane Cass	Steven M. Chorkawy	Ronald S. Cicchini
John J. Cipar	Hal Clawson	Brooks A. Coburn	W. George Cook
Frank Couch	Bruce Courter	Steve Cox	George Crum
Carson Culp	Michael Curley	David Currier	Michael Davis
Gerard R. Deily	Evard DeMott	George & Nancy Dondero	
Bruce S. Duncan	George J. Dvorak II	Frank R. Dziama	Wade C. Eagleton
Tom Eikerenkotter	Camill Elbisser	Skip Elder	Ronald Elliott
Bob Engle	David Eskelund	Steve Esposito	Robert Etchberger
Bernd Fanghanel	Robert Farkas	John D. Faulkner	Douglas E. Fink
Paul Finn	Kenneth T. Folwell	John Forr	David L. Foster
Andrew Fox	Timothy Frade	James E. Freeland	Carson Freeman
Robert Fry	Norman P. Gentieu Jr.	Brian F. Gilleran	Ted Gingrich
Robert Gladding	Martin Gombert	William F. Graff, Jr.	Jeffrey Gumpert
Roy Haeusler	Geoffrey H. Hamway	Tom Hargis	Susan Harman
Daniel Harnish	Drue Haydt	Herbert Hays	Joseph R. Heffron
Michael Hegedus	James Helmbold	Douglas Henry	William Hessler
Jim Hilker	Lee K. Hodgson	Robert Hoffman Jr.	Robert Holmes
Christine Holst & Thomas Faust		David Houseal	Cliff Howell
Robert E. Jackson	Todd A. Johnson	Tom Jordan	Kenneth Joseph
Gary Kapic	Robert Kaufman	Walter P. Keely Jr.	Tom Kelcec
Stephen Kelly	Victor V. Kidd	Chris Kingsley	Allan Kirkpatrick
Stephen & Theresa Klarich		Charles Klump	David Kneisley Sr.
Dave Kominsky	Keith A. Kreider	Craig Kumler	Robert M. Leslie
Dudley H. Lewis	Richard C. Lind	Byron L. Locke	James Long
Albert Louer	Brad Lowans	Tom Lyne	Marian Lynn
Matthew Malkiewicz	David M. McMahon	Jesse J. Meeker	Sandra Meeker
Robert & Ellen Mellott	Laurence F. Miller	Robert Miller	Bruce Moffat
Kevin Moore	Michael Moore	Charles Moorman	Philip Moreira
Brian Morroni	Mike Moyer	Keith J. Muldowney	Randy A. Musser
Paul Myers	James Newton	Bob Newton	Brad Nogar
Patrick O'Brien	Timothy O'Connor	Richard Onorevole	Ray M. Oram
John Paternoster	James Perry	James Pontz	Walter Poppe
Robert Putman	Stephen Puzio	John Quinn	R. Lee Rainey
Edwin Rappe	Michael J. Ray	Dave Reedy	David Reichert

Rev. John C. Reynolds	James Richter	Albert Rizzo	Ruth N. Rode
Randy Ross	Mike Rotz	Douglas Rowland	Gordon Rutherford
Anthony Sallo III	Bill & Linda Schafer	Mark Schmitt	Warren Scholl
Robert Sembach	James W. Seville	William Shaffer	David E. Sherburn
Roger L. Shimon	W. Stevens Shipman	Dale Shirey	Alan Siegwarth
Tom & Hilde Simco	Christopher Simone	Vernon Simpson	Robert Smith
Lonnie Smith, Jr.	George & Christina Sokol	Dave Steinberger	John Stapko
Jim Stapleton	Lee Stauffer	Theodore J. Stoutenberg	Larry Steninger
David R. Stephenson	Bill Stone	Jon Surprise	Woodruff & Jennifer Sutton
Christian Suerig	Charles M. Sullivan	David Syiek	Douglas C. Taylor
John R. Sweet	Peter R. Switalski	J. Craig Thorpe	David G. Trussell
Alan Thomas	John P. Thompson	Lamar Tyson	Jeffrey Umberger
Gene & Deb Tucker	John & Cheryl Tumolo	William Ward	Gerald M. Waring
William R. Urban	Bob Wallace	Daniel G. Wesoloski	John F. Wheeler
Donald Way	Walter Weart	Wayne Wilder	Larry H. Williams
Albert Wiggins	Sam W. Wilder	Bruce Wilson	Brian Wolfe
Robert Williams	Paula R. Williamson	David Wood	Terrill L. Woolsey
Terry Wolfe	Gregg Wolfersheim		
Mark A. Yahner	John S. Yoder		

In honor of the Pete & Jane Clarke:
William Mosteller

In memory of Sharon Altland:
Joel L. Altland

In memory of Reginald S. Arford:
Dave Johnson

In memory of Rayfield Deitrich:
Edwin J. Wright

In memory of Jeff Feldmeier:
Bill Staiger

In memory of Bill Gast:
Charles & Lynne Grew

In memory of Bill Smith:
Daniel Smith

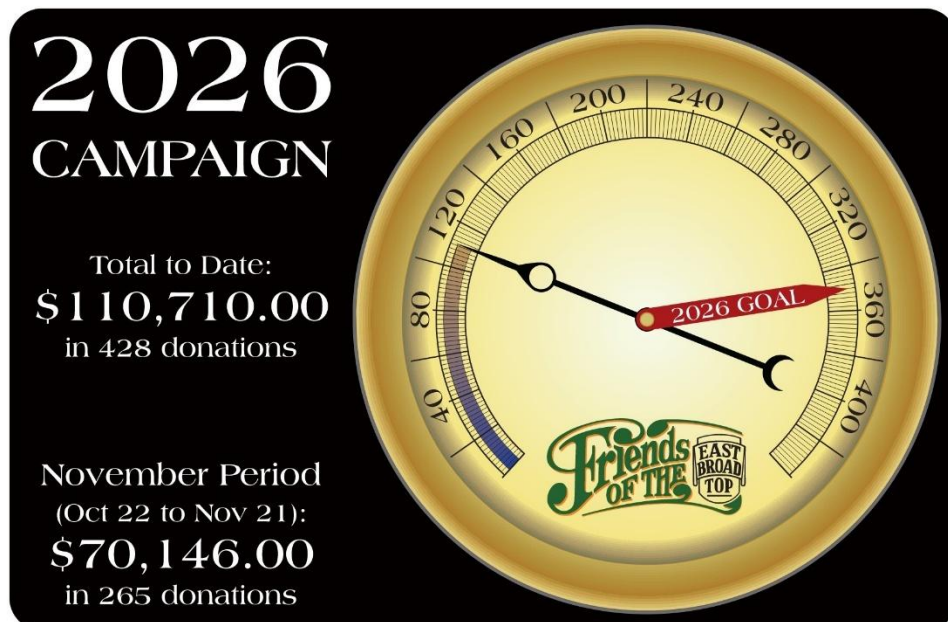
* - All donors listed represent donations received between October 22, 2025 and November 21, 2025. Donations received after November 21 will be reported in the January 2026 issue due to press time constraints.

The 2026 Annual Campaign began October 1, 2025 and will run through September 30, 2026. Campaign details were revealed on October 4, during the FEBT Reunion. You may contact the Fundraising Treasurer at:

Karen Bulman
FEBT Fundraising Treasurer
P.O. Box 43063
Cincinnati, OH 45243

FEBT is a designated 501(c)(3) organization and donations are tax-deductible in the U.S.

Thank you for your generous support! – *Karen Bulman and Dave Bulman*



FEBT COMPANY STORE

ITEM OF THE MONTH

2026 Calendars Are Here

Our 2026 calendar features images taken by the East Broad Top Railroad's official photographer, Matthew Malkiewicz (www.lostracksoftime.com). These photographs, taken over the past few years, showcase the East Broad Top from the end of the Kovalchick era through its rebirth under the EBT Foundation ownership. Many of these photographs are available to the public for the first time in this calendar. Enjoy these scenes of America's oldest operating narrow gauge railroad, the East Broad Top, through the lens of Matthew Malkiewicz.

Calendar is 11x17 inches. Photo of the calendar cover and text courtesy of the East Broad Top Foundation.



\$19.99 Member Discount Applies

Order on-line through the FEBT Company Store website at store.febt.org, using your account or create an account. PayPal, major credit cards, and personal checks payable to FEBT Company Store are accepted.

FEBT COMPANY STORE



Great Selection of FEBT Hats
Priced from \$15.00 to \$19.50



Order on-line through the FEBT Company Store website at store.febt.org, using your account or create an account. PayPal, major credit cards, and personal checks payable to FEBT Company Store are accepted.

UPCOMING EVENTS

Date	Host	Event
December 5-7, 12-14, 19-21	EBT	Christmas in Coal Country
December 5, 6, 12, 13, 19, 20	RTM	Lights, Camera, Christmas Trolleys!
December 6, 13	RTM	Santa's Trolley
January 10-11	FEBT	Rockhill Work Session
February 7-8	FEBT	Rockhill Work Session
February 13-15	EBT	Winter Spectacular
February 28 - March 1	FEBT	Rockhill Work Session
March 21-22	FEBT	Rockhill Work Session
April 10-12	FEBT	Rockhill Work Session
May 1-3	FEBT	2026 FEBT Reunion
May 16-17	EBT	The EBT Goes to War!
May 16	EBT	Trackside Tastes & Tunes
May 30-31	FEBT	Rockhill Work Session
June 1-5	FEBT	Rockhill Work Week
June 27-28	FEBT	Rockhill Work Session
July 18-20	FEBT	Rockhill Work Session
July 18	EBT	Trackside Tastes & Tunes
August 15-16	FEBT	Rockhill Work Session
August 15	EBT	Trackside Tastes & Tunes
August 30	EBT	Trackside Tastes & Tunes
September 12-13	FEBT	Rockhill Work Session
September 12	EBT	Trackside Tastes & Tunes
September 14-18	FEBT	Rockhill Work Week

Hosts: FEBT
EBT
RTM
BTACMHS

Friends of the East Broad Top
East Broad Top Railroad
Rockhill Trolley Museum
Broad Top Area Coal Miners Historical Society

www.febt.org
www.eastbroadtop.com
www.rockhilltrolley.org
broadtopminersmuseum.com

UPCOMING ROCKHILL FURNACE VOLUNTEER SESSIONS

The next Rockhill Restoration Work Weekend will take place Saturday and Sunday, January 10 and 11. See the FEBT website at <https://febt.org/volunteer/> for additional details. Please consider coming out to help us continue to preserve and restore the EBT. If you are interested in participating in the Rockhill volunteer sessions, including track work, and are not on the current signup distribution, or if you have questions or suggestions about volunteering please contact Dave Bulman, the FEBT Volunteer Coordinator, at volunteer@febt.org for more information on all of our volunteer projects and how you can participate. – *Dave Bulman*

FEBT MUSEUM SCHEDULE

The FEBT Museum is open for Christmas in Coal Country, November 29 through December 20.
Operating hours are Saturdays, 10:00 AM to 4:00 PM.

New for 2025, the Broad Top Area Coal Miners Museum will be open for Christmas in Coal Country as well, Saturdays, November 29 through December 20, 10:00 AM to 4:00 PM





JOIN US FOR

2025 HOLIDAY TROLLEY RIDES

Santa's Trolley!

40 Years and Counting!
1985 - 2025

9:00am - 1:00pm

- Ride a historic trolley to Blacklog Narrows
- Children 12 & under receive a gift from Santa
- Take photos with Santa

Tickets \$5.00
(Children under 2 free)

Lights, Camera, Christmas Trolleys!

Fridays: 5:00pm - 8:30pm
Saturdays: 2:30pm - 8:30pm

- Enjoy Christmas lights & festive displays
- Capture photo memories with friends & family
- Relax with refreshments in Santa's Workshop
- Tickets valid for multiple rides

Adults \$12
Children \$10 (ages 2-12)
(Children under 2 free)

SCHEDULE

Date	Event
Nov. 28 th	Lights, Camera, Christmas Trolleys!
Nov. 29 th	Lights, Camera, Christmas Trolleys!
Dec. 5 th	Lights, Camera, Christmas Trolleys!
Dec. 6 th	Santa's Trolley
	Lights, Camera, Christmas Trolleys!
Dec. 12 th	Lights, Camera, Christmas Trolleys!
Dec. 13 th	Santa's Trolley
	Lights, Camera, Christmas Trolleys!
Dec. 19 th	Lights, Camera, Christmas Trolleys!
Dec. 20 th	Lights, Camera, Christmas Trolleys!

Rockhill Trolley Museum
Historic Operating Trolley Museum

430 Meadow Street
Rockhill Furnace, PA 17249
Across from East Broad Top RR

RockhillTrolley.org

ABOUT THIS ORGANIZATION

Friends of the East Broad Top, Inc. (FEBT) is a 501(c)(3) nonprofit, historical, and educational society dedicated to the preservation, restoration, and interpretation of the East Broad Top Railroad National Historic Landmark in Huntingdon County, Pennsylvania. It was organized in 1983 and now boasts over 2,200 members. FEBT publishes an award-winning magazine, *Timber Transfer*, and a monthly e-newsletter, and operates a museum in Robertsdale PA, the EBT's southern terminus. See febt.org/ for more information.

ABOUT THIS NEWSLETTER

The Friends of the East Broad Top Newsletter is a monthly digital-only periodical. Started in 2020, it is intended to keep members and donors apprised of what the organization has done and will be doing. The FEBT Newsletter is distributed by email to the current list of members and donors, and is a privilege of contributing to the FEBT's cause of preserving, restoring, and interpreting the East Broad Top Railroad for current and future generations. The editor can be contacted at Newsletter@febt.org. Previous issues of the FEBT Newsletter may be found at febt.org/newsletter. Press time for information submitted is 8:00 PM Eastern time on the 25th of each month. Events occurring after the 25th, such as donations and memberships, will be considered part of the following month's information.