



Dave Bulman, Brad Esposito, Wyatt Kindler, Alex Cook, Riley Roslund, Dan Schmidt, Walt Ciler, Ed Kompare, Bob Hoffman, Bob Meek, Nick Stowell and Joel Myers celebrate emptying the first floor of Storehouse 2. – James Roslund photo

IN THIS ISSUE:

May 2025 Rockhill Restoration Sessions Report	3
Summer <i>Timber Transfer</i> Available for Download	4
A Busy Early Season in Robertsdale	5
Young Easties Program is Off to a Good Start	7
Maintaining, Improving, and Dismantling: The Track Gang's Recent Work	8
May Fundraising Update	10
Company Store Item of the Month	12
May Campaign-Supported Accomplishments	13
May Volunteers	15
Upcoming Events	16
Upcoming Rockhill Furnace Volunteer Sessions	16
FEBT Museum Schedule	17



A March to Saltillo ballast train reaches the Pogue Road (PA 994) grade crossing for the first time on May 14. – FEBT Track Crew member photo

MAY 2025 ROCKHILL RESTORATION SESSIONS REPORT

May was a busy month for FEBT volunteers in Rockhill furnace. The May work weekend was held on Saturday and Sunday, May 3 and 4, and included the first FEBT Young Easties event of 2025 on Saturday. We had 31 volunteers on Saturday plus seven Young Easties, and 18 on Sunday. The spring work week was held from Monday, May 19 to Friday, May 23. We had a total of 48 volunteers over the course of the week. Our May volunteers included 12 new adult volunteers and two new Young Easties. Welcome and thanks for joining us.

With seven total workdays this month, good progress was made on many projects.

Combine 14 saw the installations of the original oil lamps, completion of window sash fitting, installation of seat brackets, and painting of trim, windows, and steps.

The Boxcar crew completed installation of the oak floor and the interior wood sheathing. New work benches and tool boxes were installed, and a large portable generator placed in the car, all to support its planned use as a mobile restoration shop.

The track crew was busy with a variety of projects up and down the line (see Gene's article on page 8).

The restoration of Storehouse 2 reached a major milestone during the work week, with all material removed from the first floor. The material, consisting mostly of large bar and tube stock, was placed on an EBT flatcar for temporary storage while the building is restored. With the first floor now empty, a local building mover will be brought in to jack up and support the second floor of the building, allowing rebuilding of the first floor foundation and walls.

Top: Cliff Howell fits a window sash in Combine 14. – Al Gallo photo

Middle: The interior of Boxcar 174 with newly installed work bench and toolboxes. – Al Gallo photo.

Bottom: Storehouse 2 sits empty and ready for structural repairs after the Spring Work Week efforts. – Dave Bulman photo



The windows crew continued restoring sashes, cleaning salvaged glass, and installing completed sashes in the alley between the Boiler and Machine Shops. They also removed the second-floor sashes from Storehouse 2 and installed temporary plugs.



Left: Jim Seville and Bobby Goldby paint window trim in the alley between the machine shop and the boiler shop. – Al Gallo photo

Right: Jim Witmer and Walt Culver replace siding on the south side of the Boiler Shop. – Dave Bulman photo

New siding was installed below the windows on the south wall of the Boiler Shop.

During the work week we again provided lunch each day for a donation, and provided a free cook-out dinner Wednesday evening. This was followed by a great program by member, volunteer, and author Chuck Geletzke about his 45 year career in railroading.

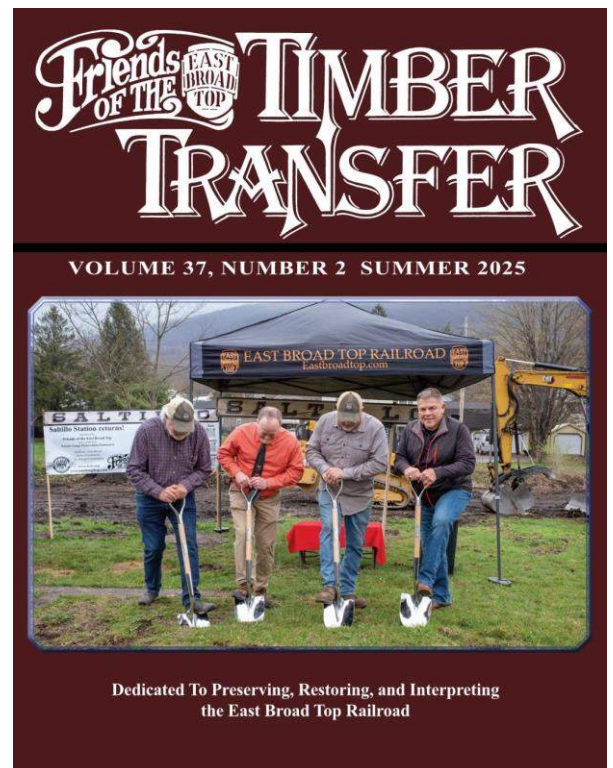
Our volunteers in Rockhill continue to make great progress, but there is much more to do. We can always use more help. If you'd like to contribute to these and other projects, please consider joining us! – Dave Bulman

SUMMER *TIMBER TRANSFER* AVAILABLE FOR DOWNLOAD

The Summer 2025 issue of FEBT's finest publication is available for digital download from the FEBT Company Store. The traditional paper copies have been mailed already. This quarter's issue includes the first installment of a series on the restoration of the PRR X-29 boxcar, part one of a series on common-carrier era passenger equipment by Lee Rainey, and a Craig Williams article on modeling the EBT with 3D-printed coaches. Members can log in to the FEBT Company Store, and the download button will be on the left margin. – Doug Davenport

MEMBERSHIP BOX SCORE

The Friends of the East Broad Top
membership is up to
2161



A BUSY EARLY SEASON IN ROBERTSDALE

Brandon Cornett, Doug Davenport, Zachary Russo, Aaron Stilson, and Rob Willhite have all volunteered to join the group of hosts this year. They joined the crew that includes Roy Burnham, Jane Clarke, Ed DeMott, Lance Gilliland, Charles High, Stephen Jackson, Greg Kifer, Doug Linebaugh, Jonathan Morningstar, Bill Mosteller, Kevin Nolish, Hans Plugge, Rickie Rourke, Owen Smithmyer, Chris Walker, Scarlett Wirt, and myself. Each host has a busy life but each makes time to ensure that the museum can be open for guests on a regular basis. Each also has their own area of interest in the EBT, so each tour is unique based on those interests. Each tour also varies depending on the questions asked by the guests. So, if you've taken the tour once, you still have a long way to go until you have had the full tour experience.

Alas, life has forced one of our volunteers to not be able to continue. Librarian Don Barton Jr. has had to step back. I thank Don for the work he's done to get the library up to speed, but it does mean that we have a need for someone to volunteer to become the next librarian. I'd love to discuss the job with you. Email me, Pete Clarke, at febt@aol.com.

Friday, April 25 was the first of our host training days (yes, if you volunteer to host, we train you). Also, on that day 13 members of the Keystone Trails Association (www.kta-hike.org) visited the museum and took tours. Saturday, April 26 was another training day for those who could not make it on Friday. As of the day I write this, we've been open on May 3, 10, and 17 and have had a steady increase in attendance. Already this year the museum has had 109 visitors.

Could you figure out what mystery man Victor Booth was making in the photo in last month's newsletter? Railbike tours just got easier and safer because Victor has built turntables and installed them at each end of the track. Guests no longer have to pick up the bikes and turn them, now we just roll them onto the turntable and spin them around. Please note that I wrote "easier" and not "easy", as it's still uphill from Robertsdale to the end of track. Oh, and end-of-track has been extended to what we expect to be the long term full length of the tour. Come see the remains of the Mine 7 & 8 branch, a truck dump, and the track spread out to serve the mines in the Woodvale area.

Top: Victor Booth poses with a railbike on the turntable he designed at Robertsdale. – Jane Clarke photo
Right: Strip mined coal is loaded into EBT hoppers at the Woodvale truck dump. – EBT Archives photo, FEBT.2022.1.21, Vince Ryan collection



Every day is a good day to visit the museum, but Archives Days are special. June 14 will be a new high, even for Archives Days! Working together with the Broad Top Area Coal Miners Museum, Archivist Julie Fether Rockwell has arranged for Clifford H. Dodge, retired Senior Geologist of the Pennsylvania Geological Survey, to present a lecture “Some New Revelations on the Coal Geology of the Broad Top Region,” 11:00 AM - 12:00 PM held at the Broad Top Area Coal Miners Museum. You really don’t want to miss this once-in-a-lifetime opportunity. Then, come to the FEBT museum to see the exhibits which complement the lecture and a selection of related artifacts from the Archives. The Young Easties will spend that day in Robertsdale, here’s your chance to meet the future. It will be a big day in Robertsdale.

Age (Ma)	Series	N.A. Stage	Local Broad Top Coal Names	Regional Coal Correlations	Other Regional Key Beds	Regional Mappable Rock Units	Unit Thicknesses (Ft)
304	Upper Pennsylvanian (part)	Missourian (part)	Wigton	Wellersburg	Wellersburg ls.	Casselman Fm.	240 (Maximum)
Round Knob North Point no. 2 North Point no. 1			Barton Federal Hill No equivalent				
Rogers (Big Pittsburgh) Longs Run no. 2 (Little Pittsburgh) Longs Run no. 1			Harlem No equivalent Upper Bakerstown	Ames mz. Noble mz. Woods Run mz.	Glenshaw Fm.	430	
McCue Mosquito Hollow Phipps			Lower Bakerstown Brush Creek? Mahoning				
307.0	Middle Pennsylvanian	Desmoinesian	Speer Kelly (= Dudley) Barnettstown no. 2 Barnettstown no. 1 (Barnettstown)	Upper Freeport Lower Freeport Upper Kittanning rider Upper Kittanning	Johnstown ls.	Allegheny Fm.	350
Twin Barnett Fulton no. 2 Fulton no. 1 (Fulton) Fulton leader (Gordon) Wood			Middle Kittanning rider Middle Kittanning Lower Kittanning rider Lower Kittanning Lower Kittanning leader Brookville				
315.2	Lower Penn. (part)	Alleghenian	Unnamed	Mercer?		Pottsville Fm.	100-200 (150)
321		Mer. rous. (part)			Roaring Run mz. of Edmunds (1992)		
TOTAL THICKNESS (FT)							1170

NOTE: Coals principally mined in Broad Top in the past or present in bold-faced type; black type for previously established coal names; red type for coals identified and named by Dodge (2023). Ma = Millions of years before present. N.A. = North American. Ls. = limestone. Mz. = marine zone. Fm. = Formation. Ft = Feet.

Geologic information of the Broad Top coal field that will be discussed in the Some New Revelations on the Coal Geology of the Broad Top Region lecture to be held in Robertsdale on June 14. – Clifford Dodge chart



Is that all? No. New at the gift shop are metal, insulated, 20-ounce tumblers with the FEBT logo and a hopper car drawing. From personal experience I can tell you that you can put in 12 ounces of soda in the morning, fill with ice, then leave it in your closed, hot car while you are in the museum all day, and there will still be ice and cold drink at the end of the day. Impressive. Suzanne Nivers has also added new towns to her list of station signs (both big, and small). Oh, and we have new front doors for the station. I’ll learn from the EBT and make no promise as to when they’ll be painted and installed (a big job since the door frames have to be rebuilt), but we expect that to get done this summer.

Don’t forget, there are two museums in Robertsdale. The Broad Top Area Coal Miners Museum is also well worth your visit. Come on up, you’ll find yourself thinking, “Robertsdale, there’s so much to see, so much to do!” – Pete Clarke

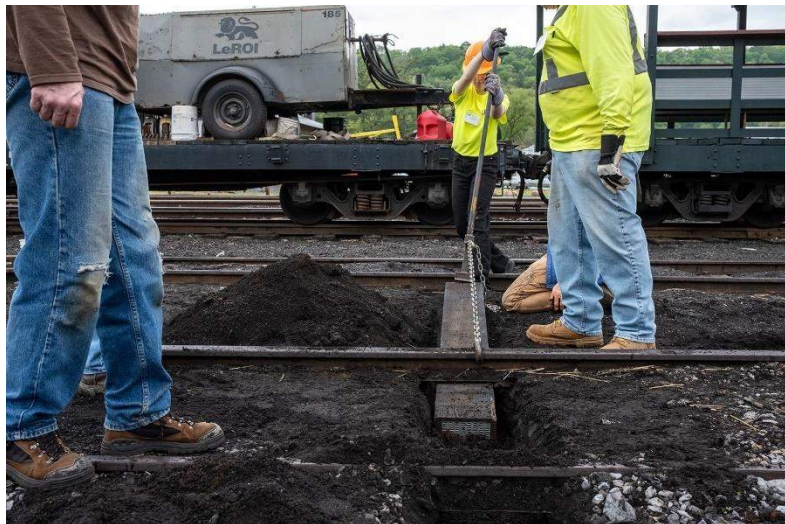
One of the new doors for the Robertsdale Station awaits painting and installation later this year. – Bill Reynolds

YOUNG EASTIES PROGRAM IS OFF TO A GOOD START

This Season's First Offering – May 3rd

FEBT's Young Easties program for teens got off to a good start on Saturday, May 3. Seven teens were involved in this year's first offering. We were delighted to welcome new participants, as well as returning ones. Four parents/grandparents were also on hand.

We began our day with an orientation to the East Broad Top for those who hadn't been in the program before. Since they had been offered an introduction to the railroad and its history, returning teens went right to work in the Rockhill Yard, setting new ties in Track 5 and Track 6. They were joined by the new participants once the orientation session was complete. The combined teams tackled the work in much the same way as track gangs did back when the railroad was built in 1872-1874, as picks and shovels dug into the ballast, creating cribs for the new ties. The gauge was checked and corrected, and then the teens acquainted themselves with spike mauls as the track was fastened together.



Above: Young Easties receive instruction while inserting replacement ties in the Rockhill Yard on May 3. – Matthew Malkiewicz photo

Left: The Young Easties spike in the ties they replaced. – Gene Tucker photo

Below: After a day of hard work and learning, the Young Easties enjoyed a ride to Colgate Grove. – Matthew Malkiewicz photo

After lunch, we were offered an introduction to the railroad's Blacksmith Shop and Forge. FEBT's new program for young adults, the Next Gen Easties, are currently restoring the shop. The day ended with a train ride to Colgate Grove.



Two Offerings in June

We are planning two offerings in June: The first one will take place at the southern end of the railroad in Robertsedale. FEBT's museum there features new exhibits, including core samples that were taken to determine the makeup of the coal fields in the Broad Top coal field (as part of this exhibit, a geologist will speak about the geology and the nature of the coal fields). Attendees will also tour the coal mine sites. Rides on railbikes will cap off the day.



Saturday, June 14th: We will gather in Robertsdale for a series of events. The proposed schedule is:

- 10:00 a.m. Gather at the FEBT Museum in Robertsdale
 - 11:00 a.m. Attend a presentation on the geology of the Broad Top Coal field at the Coal Miner's Museum (a 10 minute walk from the FEBT Museum)
 - Noon Return to the FEBT Museum.
 - 1:00 p.m. Lunch (provided)
 - 1:00 p.m. Walking tour of the coal mines
 - 3:00 p.m. Railbike rides to Wood.
- The day will end at about 4:00 p.m.

This event is limited to 10 participants.

Saturday, June 28th: The second event in June will be a hands-on work session in Rockhill. (Task TBD.) Meeting time is 9:00 a.m. at the Orbisonia Station.

Please note that, on this day, there will be no orientation session for new attendees. We are not planning to offer a train ride as part of this day's schedule.

To register for these events, all registrations should be made through youthvol@febt.org. For new participants, a registration form may be found at <https://febt.org/youthform>. (Returning teens who have a registration form on file and which has current information on it do not need to complete a new form.)

We hope to see you at the railroad! – *Gene Tucker*

MAINTAINING, IMPROVING, AND DISMANTLING: THE TRACK GANG'S RECENT WORK

Tending to the Southern End of the Railroad

The track gang's work in the early stages of this reporting period took place at the southern end of the railroad near the village of Wood. Thirteen ties were installed to correct gauge in the last couple hundred yards of usable track. A note about track conditions that have devolved across the years will explain why gauge correction was necessary. During its time as a common carrier freight railroad, EBT used untreated ties (which is kind of curious, since there was a tie treatment plant in Mount Union). Once the railroad ceased operations in 1956, Mother Nature took over, decaying the ties so that virtually nothing remained of them (when we dig into the track, we sometimes find a small remnant of wood, but never much). With nothing to hold them, the rails sank into the surrounding material (our track gangs refer to this material as schmutz). In some cases, rail which had been used elsewhere (remember that EBT made extensive use of second-hand stuff) returned to its previous shape...this is particularly true if a stick of rail had been in use in another railroad on a curve. As a result, the track's structure, alignment, and gauge degraded. During our work this last month, we found that some of the gauge exceeded 39 inches!



The Track Crew sets ties to support the Woodvale railbike turntable on April 24. – Gene Tucker photo

As part of our work, a turntable, designed and constructed by Victor Booth, was installed at the southern end of track in Wood to permit easy turning by railbikes. Another turntable was also installed at Robertsdale.

One highlight of our work is that, when we were installing the timbers that support the turntable, we dug up a Stilson wrench, located about a foot below the surface, and in remarkably good condition considering the stuff it was buried in. We never know what we're going to encounter once we begin digging below the surface. That wrench was delivered to museum personnel in Robertsdale.

Tending to the Track in Three Springs



In recent years, the railroad has offered speeder and handcar rides in Three Springs as part of their annual Homecoming Festival, held on the Memorial Day weekend. To prepare for this event, FEBT crews cleared the railhead of vegetation and encroachments, and also cleaned the flangeways.

Tending to the Dismantlement of Track in Saltillo

During this reporting period, the final dismantling of joints in the track in Saltillo was accomplished. This is preparatory work for the eventual rebuilding of track.

The FEBT Track Crew prepares the main line through the park in Three Springs for speeder and handcar operations. – Gene Tucker photo

Tending to the Distribution of Ballast and Tamping

Small groups of our track gang personnel assisted Henry Long, the railroad's Track Foreman, in spreading ballast over the track that was constructed late last year. Ballast was distributed to the north side of the PA Route 994 crossing. Some tamping followed this work.

Tending to the Encroachments of Mother Nature

On Monday of FEBT's Spring Work Week, a sizeable crew got a lot of brush cutting done on the main track between the Orbisonia Station and Colgate Grove. It's fascinating to think about the ways in which Mother Nature will seek to fill in gaps in the vegetation and trees in any given area. The area that was tended to during this work session had been extensively cut back as part of the rebuilding of the track less than five years ago. Things happen fast when Mother Nature decides to go to work!



Ballast has been applied to the main line descending Jordan Summit towards Pogue. – Al Gallo photo

Tending to Tie Work

It'd be easy to think that, once work on a specific area or section of track was done, that it wouldn't need any further TLC for quite awhile. Of course, the reality is quite different as the track structure is (in effect) a living and breathing thing. It is subject to the machinations of weather, temperature, wetness and any number of other conditions. Tending to the condition and useability of track is among the most important tasks any railroad must be aware of. Knowing this to be true, during this reporting period, FEBT personnel assisted the railroad's staff in doing some spot replacement of crossties in the main track north of the Orbisonia Station.

Thanks to Our Personnel

None of what's been described above would have gotten done without people. Willing, capable people to make it all happen. We are thankful for an abundance of capable and willing personnel who supported the work in this reporting period. There were 3) of them, including four who assisted with the Young Easties program on May 3. We were also delighted to welcome four new members of the track gang: Andy Dingsor, Kevin Weller, Dan Weller, and Chris Artale. Welcome! – *Gene Tucker*

MAY FUNDRAISING UPDATE

Thank you for your support of the 2025 Campaign. May donations totaled \$28,023 in 198 donations, bringing the 2025 Campaign total to \$352,162.

The 2025 Campaign ends September 30. Your continued support will allow us to do more to accelerate the rebirth of the East Broad Top. 2025 Campaign donations beyond the \$270,000 goal will be used to purchase additional track materials for the March to Saltillo, help to finish the Saltillo station interior, and advance other key FEBT restoration projects. FEBT greatly appreciates your continuing help to support its goals of restoring, preserving, and interpreting the East Broad Top Railroad. Thank you!

2025 Campaign Goal:

\$270,000

May Donations:

\$28,023

Campaign Total:

\$352,162 – 130.0%

May donors*:

Arthur Abig	Joan Adams	Fr. Alexei Alexiev	Richard Anderson
John J. Atherton	Jim Atkinson	Jeffrey W. Barkdoll	Donald G. Bayer
Robert Bayles	James C. Benko	Charlie Berger	Ralph R. Bitzer
Douglas O. Blount	Casper Bocklage	Jay Boggs	George Botic
Alexander Bowser	Joseph R. Brabec	James A. Brehm	James Brickley
Kenneth Brink	Wayde Brenner Brown	Chris Brumbaugh-Cayford	William Bullers
Domenick Buttiglieri	David H. Capp	Paul M. Carpenito	Matthew V. Cesare
Steven M. Chorkawy	Ronald S. Cicchini	Hal Clawson	Keith Clouse
Brooks A. Coburn	W. George Cook	Frank Couch	Bruce Courter
Carson "Pete" Culp	Rowenna (Winnie) Cupillari		David Currier
Guy Daubert	Michael Davis	David M. Demilio	
Thomas & Shirley Diehl	Harry Doolittle	Frank R. Dziama	Wade C. Eagleton
Clifford Egel	Eric Emmons	George W. Erny	Steve Esposito
Carl Fabrizio	Gary Faulkner	Douglas E. Fink	James E. Freeland
Irwin From	Robert Fry	William Garrow	Charles Geletzke Jr.
Peter Gentieu	Robert Gilbert	Stephen Grado	Stacie Grove
Robert W. Grzywacz	John Guffey	Roy Haeusler	Ralph Haines
Frank J. Harker	Daniel Harnish	Jeffrey Haslam	Herbert Hays
Michael Hegedus	John Helduser	William Hessler	Charles Hill
David Homer	Cliff Howell	David Hull	Victor Humphreys
Michael Hurlburt	Dave Johnson	Owen I. Johnson	James Kauffman

Bob Kaufman	Stephen Kelly	Terence Kemp	Steve Kidd
Victor V. Kidd	Steve & Hollis King	Steve & Terri Klarich	Allen Klosky
David C. Kneisley	Larry Knepper	Mike Kopach	Keith A. Kreider
Craig S. Kumler	William Laird	Lionel E. Lavoie	Thomas Leister
Troy C. Leitzel	Joel Leshner	George P. Lind	Byron L. Locke
Robert W. Lykens	Douglas Maddox	Robert Mahood	Ken McCorry
David M. McMahon	Thomas McMaster	William Meriwether	Craig M. Miller
Harold Mohler	James D. Montgomery	Kevin Moore	
Wayland & Cynthia Moore	Robert Morningstar	Richard & Jeanne Morse	Randy A. Musser
Charles F. Ober III	John D. Oehler	Ray M. Oram	Bradford Paulson
Jeffrey Pell	Richard Poletto	James Pontz	Brian Poole
Walter Poppe	Robert Putman	Stephen Puzio	John Queiser
Michael J. Ray	Ronald Reckling	Charles Stewart Rhine	Dale Rider
Albert Rizzo	Timothy Robinson	Anthony Rollett	Douglas Rowland
Norman R. Runk	Anthony Sallo III	Robert J. Savino	Mark Schmitt
Raymond E. Schmitt	James W. Seville	Roger L. Shimon	Gary Shrey
Robert Smith	Earle A. Stalfort, Jr.	John Stapko	Donald Stark
Shawn E. Stauffer	Dave Steinberger	Paul Stolzenfels	Charles M. Sullivan
Peter R. Switalski	Alan Thomas	Gary E. Thomas	J. Craig Thorpe
David Trussell	John & Cheryl Tumolo	Richard Ullery	H. Robert Wallace
Ron Watkins	David Watts	Walter & Susanna Weart	Michael Weaver
Ralph Weaver	Bill Weidemann	Michael Welch	Daniel Wesoloski
Byron West	John F. Wheeler	Lee Wheeler	Dennis Whisman
Sam W. Wilder	Robert Williams	Scarlett Wirt	Mark Wise
Brian Wolfe	Lynn Wolfe	Terrill L. Woolsey	Scott L. Wyrick
Joseph R. Yakubisin	John S. Yoder	Ronald Yoder	Ron Ziegler

In Memory of Suzanne Sweetlock Gumbert:
Jeffrey Gumpert

In Memory of Lee Carlson:
Duane Mellor

In Memory of David Beazley:
Roy & Susan Nelson

In honor of Bennett Levin:
Charles Donabedian

In honor of Annette L. Giovengo:
Kevin Nolish

* - All donors listed represent donations received between April 22, 2025 and May 21, 2025. Donations received after May 21 will be reported in the July 2025 issue due to press time constraints.

The 2025 Annual Campaign runs October 1, 2024 through September 30, 2025. You may donate online (credit card and PayPal accepted) at the FEBT Company Store, <https://store.febt.org/donate>. If you prefer to send a check or money order payable to FEBT, address it to:

Karen Bulman
FEBT Fundraising Treasurer
P.O. Box 43063
Cincinnati, OH 45243

FEBT is a designated 501(c)(3) organization and donations are tax-deductible in the U.S.

Thank you for your generous support! – *Karen Bulman and Dave Bulman*

FEBT COMPANY STORE

NEW, BACK IN STOCK AND COMING SOON

HO EBT Sandhouse

Adding to our growing line of East Broad Top yard structures at Rockhill furnace is this outstanding model of the Sandhouse.

This kit of the sandhouse, located in the yard at East Broad Top Railroad, Rockhill Furnace, PA is done in the same style as the other EBT structure kits with interior MDF walls covered with the various sidings.

The kit also includes 3D printed parts for the hardware. HO-scale; Building foot print: 6 1/2" X 3 1/2".

Conceived by Broad Top Mountain Models; designed and manufactured by banta modelworks. Photo shows a completed and painted kit. Photo of this craftsman kit courtesy of Bill Banta.



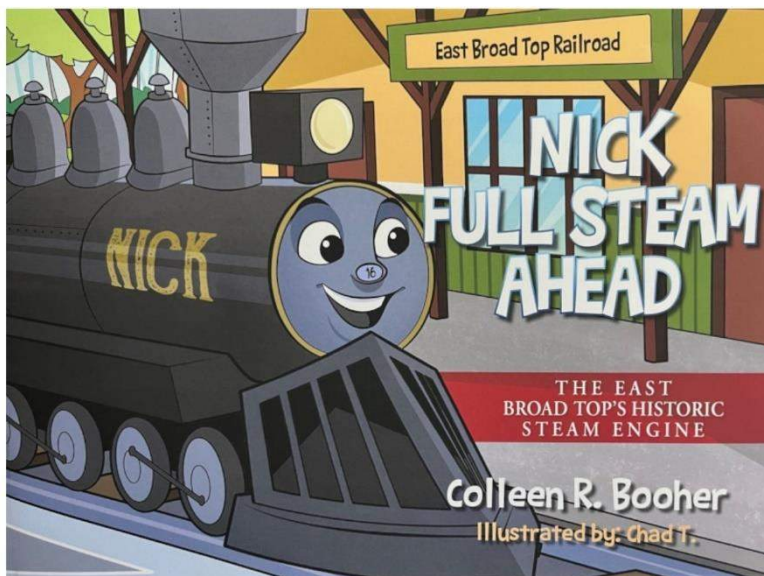
\$86.00

Member Discount Applies

Order on-line through the FEBT Company Store website at store.febt.org, using your account or create an account. PayPal, major credit cards, and personal checks payable to FEBT Company Store are accepted.

FEBT COMPANY STORE

ITEM OF THE MONTH



Nick Full Steam Ahead

This beautiful Children's book about a loyal steam engine named Nick is based on the author's real-life childhood in Three Springs, PA. Residents and visitors to Southern Huntingdon County will fall in love with the scenic route from the station to ice cream stand; from the farmhouse to the picnic grove. With colorful illustrations that spark the imagination, the ride will be almost magical! Written by Colleen R. Booher and illustrated by Chad T., Published in 2024.

\$12.99

Order on-line through the FEBT Company Store website at store.febt.org, using your account or create an account. PayPal, major credit cards, and personal checks payable to FEBT Company Store are accepted.

MAY CAMPAIGN-SUPPORTED ACCOMPLISHMENTS

May was another exciting month thanks to your generous support of the FEBT Campaign.

Construction of the Saltillo Station continues to be the biggest news. J.L. Swope Construction continues to make amazing progress. This month the station went from a bare foundation to a fully framed building with a roof, walls, and windows. The walls were up by May 14, and by May 23 the roof and windows were in place. Stay tuned as the station comes back to life.

The current project to complete the station exterior has been made possible by donations to the FEBT Campaign. The interior will be finished by FEBT volunteers. Your ongoing financial support will allow us to purchase the required materials to complete the project.

The street sign in Saltillo seems a lot more appropriate now. – Dave Bulman photo



March to Saltillo – The combined EBTF and FEBT track crew were mostly busy this month with projects on the current mainline north of Rockhill (see article on Page 8 for more details), but progress on the March to Saltillo continued, enabled by Campaign funding. Ballast purchased by the 2024 Campaign was spread all the way to the Rt. 994 crossing. And another 1150 ties were delivered this month in preparation to build track north from Saltillo. Your continued donations to the FEBT Campaign will directly support and accelerate this effort.

Rockhill restoration – The FEBT Board authorized replacement of additional roofs in Rockhill including the Freight Office and the Foundry gantry. New correct profile siding boards for Storehouse 2 were also authorized. Both were funded by the 2025 Campaign.



A 1955 view through the Saltillo Station bay window of hoppers being shifted for the Narco spur. – EBT Archives photo, EBTF.2023.16.1, Ralph A. Slater collection

Archives – Scanning and cataloging a variety of collections continues for release to the public, enabled by funding from the FEBT Campaign. This month, the Rocky Ridge Railroad Company Board of Directors Minutes, 1908-1913 is now available. Also available is a detailed index authored by EBT scholar Dr. Vagel Keller, which can be downloaded for free. With the minutes and appended documents you can read all about the developments of the Rocky Ridge Railroad, including its organization, the reports from the general manager, and its merger with the East Broad Top Railroad and

Coal Company in 1913.

Additionally, the Archives is excited to announce the release of FEBT's Francis and Rick Shoup, Don Heimburger, and H.W. Rouse, Jr. Collections. These three photographic collections include photos of the Shade Gap Branch, Mount Union, the Narco Branch (and photos of its dismantling), as well as photos from the May 3, 1936 fan trip. See the new material at <https://ebtarchives.catalogaccess.com/exhibits/39>.

The disassembly of the Narco spur. – EBT Archives photo, FEBT.2024.14.11, Don Heimburger collection



Your continued support of the FEBT Campaign will allow us to continue and accelerate these and other projects to preserve, restore, and interpret the EBT. The 2025 Campaign runs until Sept. 30, 2025. You may donate online (credit card and PayPal accepted) at the FEBT Company Store, <https://store.febt.org/donate>. If you prefer to send a check or money order payable to FEBT, address it to:

Karen Bulman
FEBT Fundraising Treasurer
P.O. Box 43063
Cincinnati, OH 45243

FEBT is a designated 501(c)(3) organization and donations are tax-deductible in the U.S. –Karen and Dave Bulman



Above right: The street side view of Saltillo Station, showing the recreated truck scale. – Dave Bulman photo

Above: An interview view of the Saltillo station agent's bay window. – Dave Bulman photo

Right: Newly delivered ties for the March to Saltillo are stored in Rockhill Furnace. – Dave Bulman photo



MAY VOLUNTEERS

The following members volunteered in May in Rockhill Furnace, Robertsdale, with the Archives, with the track crew, and/or remotely. Thanks to all FEBT volunteers for their dedicated efforts to preserve, restore, and interpret the EBT.

Bill Adams
Lawrence Biemiller
Sue Briggs
Dave Bulman
Jane Clarke
Craig Confair
Kevin Croyle
Ralph Davidson
Larry Fuchs
Lance Gilliland
Bob Hoffman
Steve Jacobs
Greg Kifer
Daniel Lane
Mathew Malkiewicz
Curtis Miller
Bill Mosteller
Sam Painter
Rich Poletto
Mark Reese
Rick Rourke
Russell Semen
Aaron Stilson
Gene Tucker
Mike Wahler
Bill Wheeler
John Widmeyer
Rob Willhite
Scarlett Wirt
Tristan Wise
Jim Witmer
Connie Wolfe
Terry Wolfe
Charlie Wootton

Chris Artale
Ben Bilott
Alexander Brown
Karen Bulman
Pete Clarke
Chris Connacher
Walt Culver
Ed DeMott
Al Gallo
Bobby Goldby
Cliff Howell
Dave Johnson
Wyatt Kindler
Don Lee
Margie McFalls
Jessica Moore
Joel Myers
Tom Perman
John Quinn
Bill Reynolds
Justin Santichen
Jim Seville
Nick Stowell
Jared Ughetto
Matt Wall

Jim Balogh
Victor Booth
Chris Brumbaugh-Cayford
Roy Burnham
Jim Colby
Alex Cook
Doug Davenport
Andy Dingsor
Tyler Gardner
Dave Hart
Joe Izzo
Todd Johnson
Eric Knepp
Ben Leese
Ray McFalls
Jeanne Morse
Kevin Nolish
Dave Phillips
Lee Rainey
Blake Rimmey
Tim Schindele
Blair Stewart
John Thompson
Dick Ullery
Dan Weller

Stacey Batovsky
John Bowie
Dave Capp
Chris Coleman
Brandon Cornett
Ray Davidowski
Jack Fornadley
Charles Geletzke, Jr
Charlie High
Steve Jackson
Tom Jordan
Ed Kompare
Doug Linebaugh
Bob Meek
Richard Morse
Dave Padula
Hans Plugge
Stephen Ramirez
Julie Rockwell
Dan Schmidt
Roger Stier
Jim Troup
Andy VanScyoc
Kevin Weller



The Young Easties group photo from the first event of 2025. – Dave Bulman photo

UPCOMING EVENTS

Date	Host	Event
June 7	RTM	Johnstown Car Day
June 7-8	FEBT	Rockhill Work Session
June 14	FEBT	Young Easties Work Session (Robertsdale)
June 14	EBT	Trackside Tastes & Tunes
June 14	FEBT	FEBT Museum Archives Day
June 28	FEBT	Young Easties Work Session (Rockhill)
June 28-29	FEBT	Rockhill Work Session
July 4	EBT	4 th of July at the EBT
July 12	FEBT	Young Easties Work Session (Robertsdale)
July 12	RTM	Car Cruise-In
July 12-13	FEBT	Rockhill Work Session
July 19	FEBT/BTACMHS	Robertsdale-Wood Heritage Day
July 26	EBT	Trackside Tastes & Tunes
August 2	FEBT	Young Easties Work Session (Rockhill)
August 2-3	FEBT	Rockhill Work Session
August 9	FEBT	FEBT Museum Archives Day
August 23-24	FEBT	Rockhill Work Session
August 30	EBT	Trackside Tastes & Tunes
September 13	FEBT	Young Easties Work Session (Rockhill)
September 13-14	FEBT	Rockhill Work Session
September 15-19	FEBT	Rockhill Fall Work Week
September 18-21	EBT	Ragtime at the Railroad
September 20	EBT	Trackside Tastes & Tunes
October 3, 4, 5	FEBT	2025 Fall Reunion
October 11, 12, 18, 19, 25, 26	EBT	Pumpkin Patch Express
November 1	FEBT	Young Easties Work Session (Rockhill)
November 1-2	FEBT	Rockhill Work Session
November 28-30	EBT	Christmas in Coal Country
December 5-7, 12-14, 19-21	EBT	Christmas in Coal Country

<u>Hosts:</u>	FEBT	Friends of the East Broad Top	www.febt.org
	EBT	East Broad Top Railroad	www.eastbroadtop.com
	RTM	Rockhill Trolley Museum	www.rockhilltrolley.org
	BTACMHS	Broad Top Area Coal Miners Historical Society	broadtopminersmuseum.com

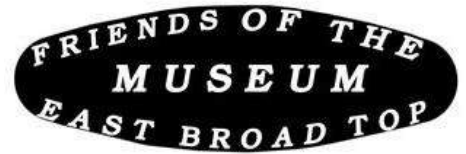
UPCOMING ROCKHILL FURNACE VOLUNTEER SESSIONS

The next Rockhill Restoration Work Weekend will take place Saturday and Sunday, June 7 and 8. There will be a second June work weekend on Saturday and Sunday, June 28 and 29. The remainder of the 2025 Rockhill Furnace Work Session schedule is now available. Please consider coming out for one or more of the sessions to help us continue to preserve and restore the East Broad Top. If you are interested in participating in the Rockhill Furnace volunteer sessions including track work, and are not on the current signup distribution, please contact Charlie Wootton, the Rockhill Furnace volunteer coordinator, at rhrestoration@febt.org. Visit our website at [Volunteer – Friends of the East Broad Top](#) for more information on all of our volunteer projects and how you can participate. If you have questions about volunteering, or have suggestions for our volunteer recruiting efforts, please email me at volunteer@febt.org. – Dave Bulman

FEBT MUSEUM SCHEDULE

The FEBT Museum is now open for the 2025 season.
Operating hours are Saturdays 10:00 AM to 5:00 PM.

Archives Days: June 14, August 9



Drill to the Core: In Search of Broad Top Mountain Coal

A two-part event on June 14, 2025

- "Some New Revelations on the Coal Geology of the Broad Top Region" will be presented by Clifford H. Dodge (Pennsylvania Geological Survey-Retired) from 11 AM to Noon at the Broad Top Area Coal Miners Museum
- Special exhibits at the FEBT Robertsdale Museum, 10 AM to 5 PM

Come & learn what's under your feet!



ROCKHILL TROLLEY MUSEUM INVITES
YOU TO JOIN US FOR A

CAR CRUISE-IN



Bring your classic/antique/show car and
enjoy an afternoon with car enthusiasts.

Drivers receive a complimentary trolley
ride ticket, and each passenger can
purchase a ticket for ½ price. Food and
drinks will be available.



Saturday, July 12, 2025
11:00 AM to 4:00 PM

430 Meadow Street, Rockhill Furnace, PA 17249

Not a car enthusiast? That's ok!
We are still open from 11am to 5pm for trolley rides and tours, with the last ride at 4:15 PM.

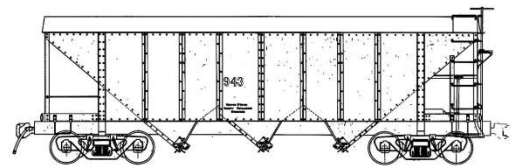


New for 2025!

Robertsdale-Wood Heritage Day July 19th
from 10 AM to 5 PM (movies to follow)

Featuring:

- Speeder rides from Robertsdale to (near) Wood
- Our usual railbike and walking tours
- Special Tours:
 - St. Michael's Orthodox Church in Wood
 - Mine #6 site in Wood
- Lawn Games, picnic area
- Activities at the FEBT Museum and Coal Miners Museum
- Community-wide yard sales
- Chicken BBQ provided by the RW&BT Fire Hall
- Firetruck display
- EBT and H&BT Movies at 7 PM at the Coal Miners Museum



Brought to you by: Friends of the EBT Museum, Broad Top Area Coal Miners Museum, and RW&BT Fire Company

ABOUT THIS ORGANIZATION

Friends of the East Broad Top, Inc. (FEBT) is a 501(c)(3) nonprofit, historical, and educational society dedicated to the preservation, restoration, and interpretation of the East Broad Top Railroad National Historic Landmark in Huntingdon County, Pennsylvania. It was organized in 1983 and now boasts over 2,200 members. FEBT publishes an award-winning magazine, *Timber Transfer*, and a monthly e-newsletter, and operates a museum in Robertsdale PA, the EBT's southern terminus. See febt.org/ for more information.



The Storehouse crew of Ed Kompare, Bob Hoffman, Bob Meek, Andy Dingsor, Cliff Howell, and Mark Reese move a large piece of bar stock from Storehouse 2 while Dan Schmidt waits on the flatcar during the Spring Work Week. – Dave Bulman photo

ABOUT THIS NEWSLETTER

The Friends of the East Broad Top Newsletter is a monthly digital-only periodical. Started in 2020, it is intended to keep members and donors apprised of what the organization has done and will be doing. The FEBT Newsletter is distributed by email to the current list of members and donors, and is a privilege of contributing to the FEBT's cause of preserving, restoring, and interpreting the East Broad Top Railroad for current and future generations. The editor can be contacted at Newsletter@febt.org. Previous issues of the FEBT Newsletter may be found at febt.org/newsletter. Press time for information submitted is 8:00 PM Eastern time on the 25th of each month. Events occurring after the 25th, such as donations and memberships, will be considered part of the following month's information.