



NEWSLETTER

Preservation Restoration Interpretation

Volume 6, Issue 5

May 2025



The largest volunteer crowd since March of 2020 descended upon Rockhill for the April 2025 work session. – Dave Bulman photo

IN THIS ISSUE:

Ballot Correction	3
Young Easties Season Begins	3
Submit Your Child Clearance Certificates	4
April 2025 Rockhill Restoration Session Report	4
How to Scan a 9-Foot M-1 Drawing	6
EBT Archives Features New Exhibit and Hosts Geology Lecture in Robertsdale	8
The 2025 FEBT Reunion on October 3, 4, and 5 and the Tracks Beyond	9
April Robertsdale Report	10
The Track Gang: Working North, South, and In Between	11
Arts Council Will Exhibit Malkiewicz Photos	12
Naming Opportunities and Other Ways to Give	13
Company Store Item of the Month	14
April Campaign-Supported Accomplishments	15
April Fundraising Update	16
April Volunteers	17
Coal Miners Museum Set for 2025 Season	17
Upcoming Events	19
Upcoming Rockhill Furnace Volunteer Sessions	19
FEBT Museum Schedule	20



The window crew of Terry Wolfe, Connie Wolfe, Charlie High, Ralph Davidson, Huston Jacobs, and Todd Grissinger gathers outside the Carpentry Shop. – Bobby Goldby photo.

BALLOT CORRECTION

The ballot for the FEBT Directors Election that members received in the mail includes an erroneous reference to voting for “up to five candidates.” There are only four director positions up for election this year, so please do not vote for more than four people, including write-ins. The Nominating Committee chairman apologizes for the mistake. – *Lawrence Biemiller*

YOUNG EASTIES SEASON BEGINS

Calling all teens, ages 13 to 17 (or 18, if still in high school). FEBT’s Young Easties kicks off its second season on Saturday, May 3. If the teenaged members of your household have been thinking about joining in the activities that will be offered that day, there’s still time to sign up, but you must act quickly.

To sign up, go to FEBT’s website, <https://febt.org.youthform>. There you will find the registration form. Print out the form, complete and sign it, and bring it with you to the event on Saturday, May 3. Email us in advance to let us know you are coming by using the address youthvol@febt.org.

The day’s activities will begin with registration at the Orbisonia Station at 9:00 AM. Returning teens will then begin the day’s hands-on activity (planned to be tie installation in the Rockhill yard) at 9:30. New attendees will attend an orientation session on the railroad at 9:30, after which they will join the hands-on work in the yard. Lunch is provided at noon. At 1:30 in the afternoon, we will learn about the railroad’s Blacksmith Shop, its operation in times gone by, and its current restoration by the Next Gen Easties (a group of FEBT members ages 18 to 35). A train ride will cap off the day at 3:00 PM.

Attendees must wear long pants and sturdy, over-the-ankle boots (steel-toed preferred). Please bring good gloves, a hard hat, and eye protection.

Looking ahead, we will conduct two sessions in June, one on June 14, and the other on June 28. Both of these events will take place at the southern end of the railroad in Robertsdale. Details will follow in June’s newsletter.



The Young Easties pose after the first session of 2024. – Matthew Malkiewicz photo

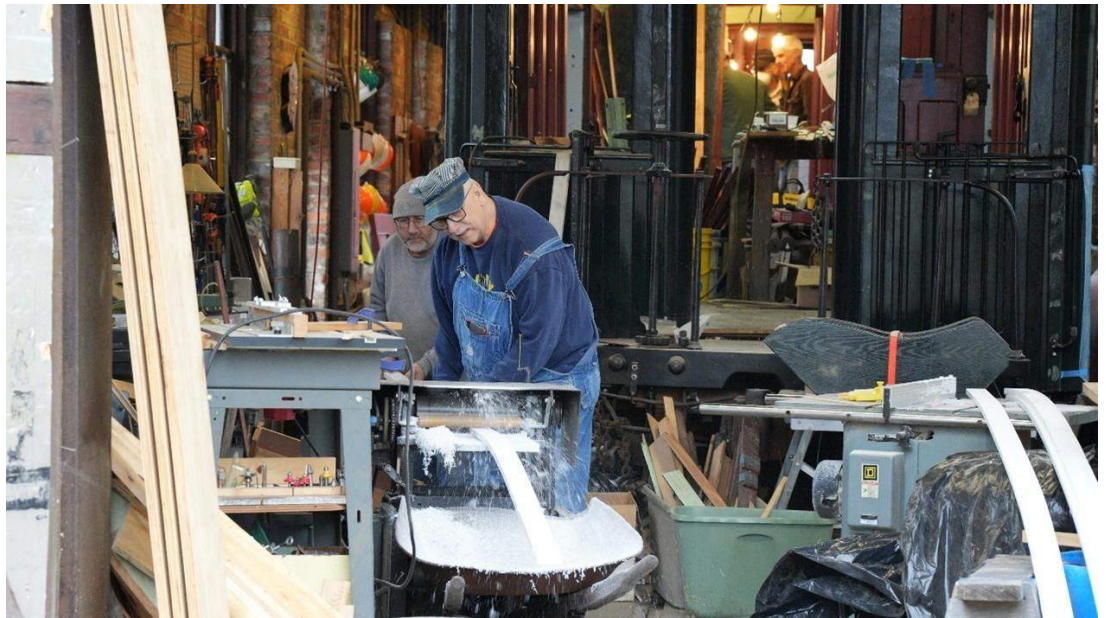
We look forward to seeing you! – *Gene Tucker*

SUBMIT YOUR CHILD CLEARANCE CERTIFICATES

As we begin the tourist season, many FEBT activities are beginning to take place for the first time this year. Of these, a handful of positions require certifications for working with children. Museum hosts, tour guides, and Young Easties leaders are among the list of these positions. FEBT now has a Child Clearance Coordinator position, and the coordinator needs copies of any applicable certifications you may hold. Please submit them one of two ways; via Dropbox to <https://www.dropbox.com/request/SkVUL3Rz9wROKCsG2dqQ>, or by email to clearance@febt.org. Also feel free to contact the coordinator if you have questions about the clearance process. – Doug Davenport

APRIL 2025 ROCKHILL RESTORATION SESSION REPORT

We had a fantastic April FEBT Rockhill work weekend on Saturday, April 5 and Sunday, April 6. Saturday started with 50 volunteers on hand. This was the second-highest Rockhill single day turnout, exceeded only by the March 2020 session immediately after the Foundation's announcement of acquiring the railroad. The Saturday volunteers included 12 folks from the Penn State Altoona AREMA Student Chapter (American Railway Engineering and Maintenance-of-Way Association), and a significant number of other Next Gen Easties. Sunday had a solid 23 volunteers. The highlight of the weekend was the opportunity for all of the volunteers to attend the Saltillo station groundbreaking on Saturday. It was great to have so many FEBT contributors be a part of this major milestone for the organization. In Rockhill, excellent progress was made on all projects including track work, Combine 14, Boxcar 174, windows, the Blacksmith Shop, and Storehouse 2.



The Combine 14 crew continued fitting exterior trim, trial fitting windows, and completing interior details including the coal stove chimney pipe.

Dave Ebright and Chuck Geletzke cut exterior trim for Combine 14. – Jacob Bury photo
Alex Cook shows off the completed interior sheathing in Boxcar 174. – Jacob Bury photo.

The Boxcar 174 crew continued installing interior wood sheathing and trimming the door openings.

The windows effort had a record turnout, and made great progress recycling donated glass panes, prepping and restoring sashes, and installing completed sashes into window openings in the Machine and Boiler Shops.

The track crew worked two projects, with one group tightening joints on the main north of Rockhill, while the larger group disassembled rail joints working north from Saltillo (see article on Page **XX**).

The Next Gen Easties continued their efforts to restore the Blacksmith Shop interior. A new base was constructed for the large forming table, and two small coal bins were rebuilt.

The Storehouse 2 team removed rotted siding and framing from the north first floor wall, and then installed new temporary wall bracing to stabilize the building for emptying in May.



Our volunteers in Rockhill continue to make great progress, but there is always more to do. We can always use more help. If you'd like to contribute to these and other projects, please consider joining us! – *Dave Bulman*



Right: Bobby Goldby and Bill Adams with freshly installed windows in the alley between the Machine Shop and Boiler Shop. – Dave Bulman photo
Below: Wyatt Kindler, Hannah Marchok, Ben Leese, Matt Wall, and Alexander Brown complete the new base for the forming table in the Blacksmith Shop. – Dave Bulman photo



Stephen Ramirez and Dave Bulman remove deteriorated siding on Storehouse 2. — Jacob Bury photo

HOW TO SCAN A 9-FOOT M-1 DRAWING

The top priority of the EBT Archives and Special Collections is always the same: Support the needs of the East Broad Top Railroad. Requests may come from the master mechanic, the director of engineering, the station master, the marketing director, or, of course, the general manager or a member of the Board of Directors. Any one of those could be asking for a deed, a right-of-way detail, a locomotive or car or bridge drawing, a specific photo, an obscure piece of correspondence, or whatever information the Archives staff can find about a particular topic. The Archives, supported entirely by Friends of the EBT donations, are an amazing and probably unparalleled resource for both the Foundation and the Friends.



In 2023, Archives technician Sammy Bellin and Archivist Julie Rockwell scanned over 600 Baldwin locomotive drawings, for which volunteers Walt and Carole Keely created a searchable database for the mechanical department's use. The database not only makes drawings easy and quick to locate, but also means no one has to paw through the originals, some of which are quite fragile.

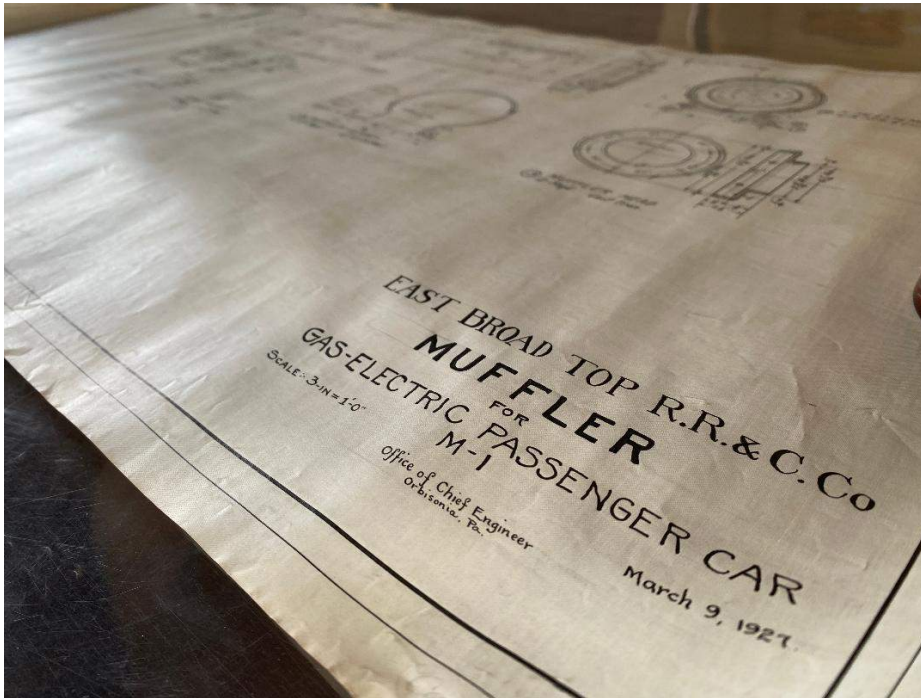
In the Archives, Sammy Bellin and Julie Rockwell prepare to feed a large M-1 drawing through the wide-format scanner. You can see a light fixture in the lower right, and above that a luggage rack. — Lawrence Biemiller

Unfortunately, not every drawing the mechanical department would like to see has turned up in the Archives — at least not so far. Sometimes a drawing that is in the Archives represents a pristine, as-built part or assembly — say, a 1916

Baldwin trailing truck. But what the mechanical department is actually facing is a trailing truck that has endured four decades of hard wear, a few derailments, and some bewildering repairs made on the fly or on the cheap — or both.

Still, having the drawing to refer to is better than not having it, which is why the mechanical department recently suggested scanning M-1 drawings too, and having a new M-1 database created by the Keelys — again, for the mechanical department's use. Sooner or later, says Linn Moedinger, an EBT Foundation board member who helps out with car and locomotive repairs, the M-1 drawings will be needed, so they might as well be scanned now.

Two summers ago, then-Archives intern Connor Green preserved multiple rolled and folded blueprints, along with correspondence, parts ledgers, and other materials related to the 1927 Brill-Westinghouse gas-electric unit, famously built here in the EBT shops. So the materials were easy to locate, but scanning them was another matter. Some of them turned out to be 1:1 scale — that is, life-sized. And you have no way of knowing, when you start unrolling a blueprint, how big it is or what it will show.



That was the case a couple of weeks ago with a sheet that, as it was unrolled, just kept going and going and going. What appeared first were some circles, then rivets and an unusual-looking curved element. Eventually it became evident that the drawing showed a widthwise section through one side of the M-1 passenger compartment. The circles were the ankle-level pipes for the Peter Smith Heater Co. recirculating hot-water heat, while the curved element was the armrest for a seat. Above them were a windowsill, a window, a rolled-up window shade, a luggage rack, the curve of the roof, and half of a light fixture. The blueprint is nine feet long.

Luckily, it's just narrow enough to fit into the wide-format scanner purchased in August 2022 with a National Railway Historical Society Heritage Grant. Typically, a drawing is slid between heavy Mylar sheets to protect it as it goes into and comes out of the scanner. But

Unlike other M-1 drawings, which appear to have come from the J.G. Brill Company, designers of the gas-electric, this drawing was produced in the EBT Chief Engineer's Office. — Lawrence Biemiller photo

this blueprint is so big that several feet stuck out beyond the Mylar on one end, requiring a third set of hands to make sure everything went smoothly.

A quick sample of what will go in the M-1 database includes detailed blueprints for the seats, switch cabinets, and partition headers. A blueprint of an emergency toolbox shows that it was used on multiple Brill units built from 1924 on, including Model #55 Gasoline Rail Cars. There's also a lovely linen drawing for a muffler that's dated March of 1927. Unlike the other drawings, mostly from Brill, this one was done in the EBT Chief Engineer's Office. The car had gone into service that January, and the railroad's records show that a muffler was included. Perhaps it was too loud and the EBT designed a new one?

Meanwhile, other information continues to surface. Bellin knew just where to look in the financial records for not only the cost of the M-1 (\$42,505.89) but also the cost of the unsuccessful M-2 (\$4,048.37 — you get what you pay for, as the saying goes). In the same file was the cost of changes made to Coach No. 8 so it could serve as the M-1's trailer: \$968.85, including \$550.92 for Timken roller bearings and \$293.12 for a Peter Smith water heater to feed the ankle-height heating pipes. The coach had earlier been equipped with steam heat, but the M-1, of course, had no way to make steam. —

Lawrence Biemiller

EBT ARCHIVES FEATURES NEW EXHIBIT AND HOSTS GEOLOGY LECTURE IN ROBERTSDALE

The EBT Archives team is thrilled to contribute to the Robertsdale experience and support continued educational outreach activities at the museum. A new exhibit, *Drill to the Core: In Search of Broad Top Mountain Coal*, introduces a brief glimpse into the geology that makes up Broad Top Mountain, the use of bore hole drilling that produced core samples for the EBT, and the Hoffman Brothers Drilling Company, through related drawings and artifacts found in the EBT Foundation and Friends of the East Broad Top's remarkable collections. The exhibit will open Saturday, May 3, and run until the end of the year. This archives exhibit is one of three new feature exhibits for the 2025 Robertsdale Museum season.



EBT Foundation, Inc. Core Samples. – Matthew Malkiewicz

To complement the exhibit, the Archives will host a special lecture on the geology of Broad Top Mountain during its Archives Day in Robertsdale on Saturday, June 14. Clifford H. Dodge, retired Senior Geologist of the Pennsylvania Geological Survey, will present a lecture “Some New Revelations on the Coal Geology of the Broad Top Region,” 11:00 a.m. - 12:00 p.m. held at the Broad Top Area Coal Miners Museum. The lecture and entry to the miners museum are free with donations accepted.

“The structurally complex, isolated Broad Top coalfield consists of Pennsylvanian-age sedimentary rocks containing several commercial, low-volatile bituminous coals,” Dodge says. “Remarkably, despite a general understanding of the coalfield since the work of James H. Gardner (1913), the detailed areal geology has not been well studied or clarified until now.”

Dodge will share the new, comprehensive study that the Pennsylvania Geological Survey (PAGS) started in 2017 which reveals “newly recognized or redefined mappable bedrock

geologic units in Broad Top.” The “identified coals and geologic units of the Great Trough Creek syncline (basin) in the East Broad Top field, where the mines of the Rockhill Iron and Coal Company operated, will be briefly discussed.” – *Julie Fether Rockwell*



EBTF.2022.4.231. Hoffman Bros., Drilling Contractors, Punxsutawney, Pa. – EBT Archives photo

THE 2025 FEBT REUNION ON OCTOBER 3, 4, AND 5 AND THE TRACKS BEYOND

Following on from a successful 2024 Friends of the East Broad Top Reunion, which had a 21st century record attendance of 210 attendees, it is now time to look ahead - not just to the 2025 FEBT Reunion on October 3, 4, and 5 but to 2026 and beyond.

First, when looking at the 2025 FEBT Reunion, registration will go live on June 1st, 2025 for the price of \$40. Get those registrations in early so we know you're coming.

Now to look further ahead to 2026, The FEBT Board of Directors and Reunion Coordinator Al Gallo have come to the joint decision to move the FEBT Reunion out of the month of October and away from the fall season for the year 2026 and onward. A number of challenges came into view, namely with non-registration costs rising for the Reunion weekend due to other prominent, non-railroad related, fall events in the area. While this may not be an issue for some, it needs to be considered when looking at Reunion's longterm future, in terms of both sustainability and growth.

With this challenge comes an opportunity; an opportunity to honor the Friends of the East Broad Top's history and more specifically the organization's founding month of May.

As such the date of the 2026 FEBT Reunion will be May 1st, 2nd and 3rd, 2026.



So join us in for the 2025 FEBT Reunion in October of 2025 and plan on honoring FEBT's Heritage in May 2026 when the FEBT Reunion moves to the EBT's opening weekend and we partner with the EBT Foundation to pull out all the stops and kickstart the EBT's operating season. – Al Gallo

MEMBERSHIP BOX SCORE

The Friends of the East Broad Top
membership is up to
2247

APRIL ROBERTSDALE REPORT

Well, what do you know; it's the first of May. You could come visit the FEBT Museum in Robertsdale this Saturday or every Saturday from now to the end of October. If you're going to drive to Saltillo to check out progress on the station, why not finish the trip?

Sometimes our changes are obvious to all, sometimes they are small. New shelves in the inventory closet allow us to store more merchandise and have the items more accessible. New storage cabinets upstairs will help us keep track of donated items. Massive improvements to the railbikes have been done and have to be tested. Speaking of the railbikes, what is this (see photo to the right), and will it make turning the bikes easier?

Walking tours, railbike tours, lots of displays (new since last year, see the separate article on Page 8), cool items for sale (many only available here), and the temperature and humidity still allow for pleasant outdoor activities. What's not to like?

Come on up in May, but then come back again for one (or all) of our special event days.

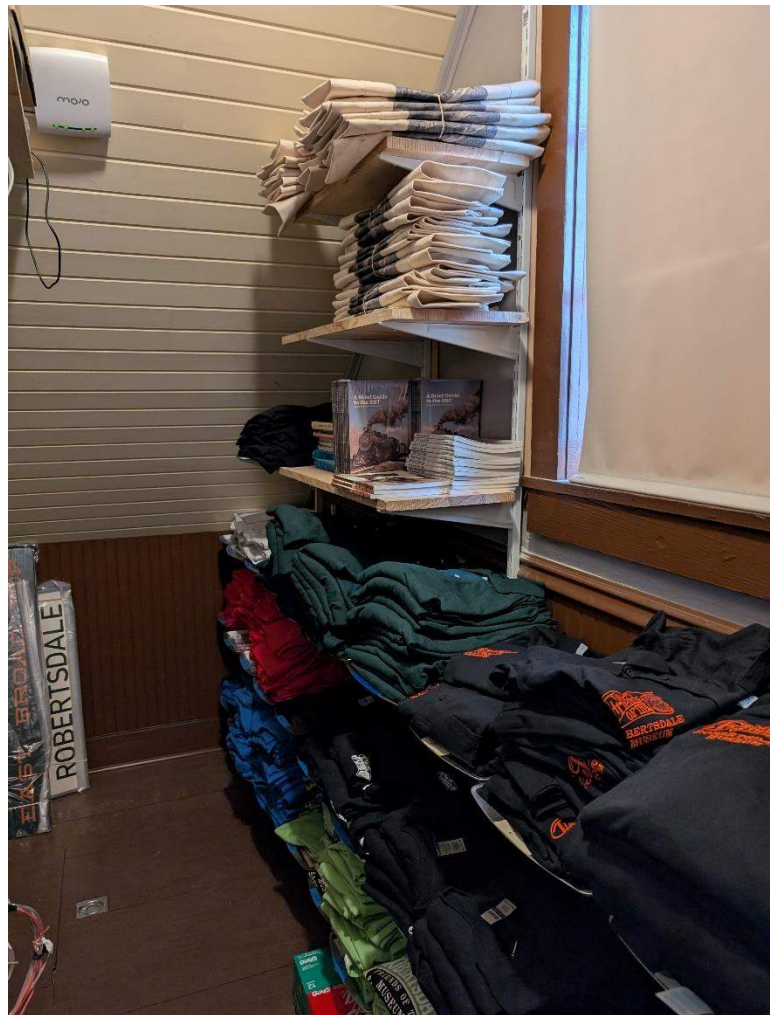
The Archives Days are always days you don't want to miss, but the one on June 14 (done in combination with the Miners Museum) will be super and way beyond what we've done before. See Julie Fether Rockwell's article in this newsletter.

Later in the summer, on July 19, the FEBT, the Broad Top Area Coal Miners Museum, and the Robertsdale/Wood and Broad Top Volunteer Fire Department will host the first annual Robertsdale-Wood Heritage Day. See the flyer elsewhere in this newsletter. It should be a fun day for the whole family. You can help by loaning us some lawn games, specifically, horseshoes and cornhole equipment. Contact me at FEBT@aol.com.

Don't forget, there are two museums in Robertsdale—the Broad Top Area Miners Museum is well worth your visit. Come on up, you'll find yourself thinking, "Robertsdale, there's so much to see, so much to do!" —
Pete Clarke

Top right: New railbike turntables have been fabricated. – FEBT Volunteer photo

Right: New shelving helps the FEBT Museum keep your favorite books and shirts in stock. – Jane Clarke photo



THE TRACK GANG: WORKING NORTH, SOUTH, AND IN BETWEEN

In this reporting period, FEBT's track personnel managed to get a lot of work done, up north on the main in the area of the Blacklog Creek bridge, south of Jordan Summit, in Three Springs, and in Saltillo.

Working the North End: Bolt Work on the Main

During April's Work Weekend, on Saturday, April 5, part of our crew went north via the Silver Sightseer (on of the railroad's speeders) to replace loose bolts, to check bolts for tightness, and to tighten ones that needed attention. The focus of this work was the north side of McMullen's Summit.

The FEBT Track Crew tightens joint bolts on the mail line on McMullen's Summit. – Dave Johnson photo



Working the Middle: Tie Work on the Main

During the month, our forces assisted Henry Long, the railroad's Track Foreman, with tie installation north of the Blacklog Creek bridge. Over 60 ties were replaced. Along with this work, tie spacing was improved in the areas worked.

(More) Working the Middle: Tamping

During the week of April 21, two of our personnel assisted Henry Long with tamping south of the Jordan Summit overhead bridge. The railroad's tamper, which was recently repaired, worked well during the two-day tamping session. Larry Fuchs and Daniel Lane assisted in this work, which resulted in fully tamped track to a point more than halfway between the Jordan Summit bridge and the McCoy Road grade crossing.

Working the Near South End: Brush Cutting in Three Springs

On Thursday, March 27, a large crew tackled the removal of brush and small trees on the embankment across from the swimming pool complex in Three Springs. Disposal of the large amount of vegetation was made easier with the use of a chipper.

With the tamper back in operation, the main line south of Jordan Summit has begun to be returned to full service. – Henry Long photo

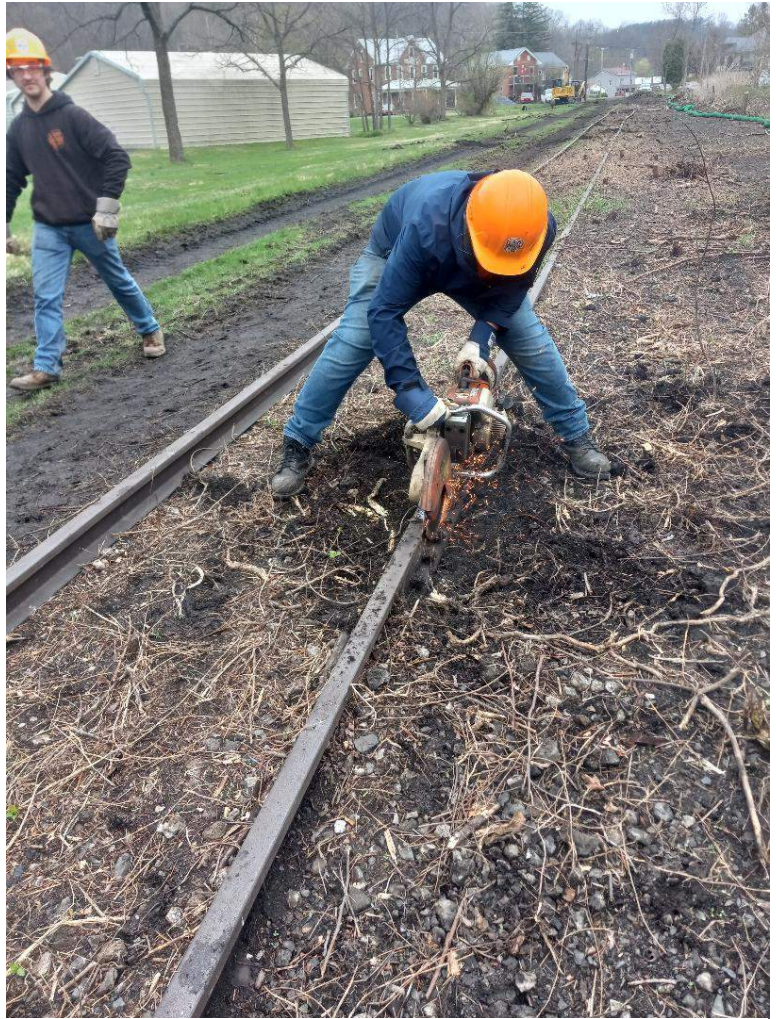


Working the South End: Saltillo

Saltillo is by no means the southern end of the railroad, but it is the southern end of the current restoration segment as part of the March to Saltillo. The size of the crew on Saturday, April 5, of the Work Weekend was large enough that about half of the personnel were able to go north to do bolt work, while the remainder headed south to Saltillo, where joints were broken apart. Since many of the joints were buried in the schmutz (one of our favorite words track-side), a lot of digging was needed. Once the joints were free of the schmutz, considerable effort was needed to get the joint bars to separate from the rail. Every third joint was dismantled. In the fullness of time, the lengths of rail will be pulled to the area adjacent to the grade crossing for further dismantling.

Making It Happen: Lots and Lots of Help

FEBT is blessed to have a very large, ambitious, and capable group of track workers. During this period, 37 of our number supported the work described above. We were especially delighted to welcome eight members of Penn State Altoona's AREMA (American Railway Engineering and Maintenance-of-Way Association) student chapter, who joined us for the Saturday session of the April Work Weekend. Most of these students had not worked track before, but they seemed delighted to be able to experience this side of railroading firsthand. In addition, we welcomed three new members of our track community: Christ Brumbaugh-Cayford, Richard Morse, and David Getty. Welcome, each of you. – Gene Tucker



*Track bolts are cut in Saltillo during the April Work Session.
– Gene Tucker*

ARTS COUNCIL WILL EXHIBIT MALKIEWICZ PHOTOS



The Huntingdon County Arts Council will display a rich selection of East Broad Top images by EBT Foundation Photographer and FEBT member Matthew Malkiewicz from May 8 to May 31. The exhibit, “Losing Track of Time at the East Broad Top,” takes as its theme the timelessness of the railroad as a subject for photography. The Arts Council is located at 313 12th Street in Huntingdon, and is open Tuesdays through Saturdays from 10 a.m. to 5 p.m. An opening reception will take place Thursday, May 8, from 6 p.m. to 8 p.m., and all are welcome. – Lawrence Biemiller

“The Waiting,” 2015. - Matthew Malkiewicz photo

NAMING OPPORTUNITIES AND OTHER WAYS TO GIVE

The Friends and the EBT Foundation together continue to make substantial progress toward our dream of restoring the entire railroad, its shops and related facilities to operating condition. We are all very grateful for every volunteer hour and financial contribution that has led to the successes we have achieved thus far. As much progress as we have made, completing our mission will still take years and further resources.

In the January Newsletter we announced a slate of naming opportunities. We are pleased to announce that an FEBT member stepped forward to commit \$80,000 to one of those naming opportunities. The first mile of mainline south of Rockhill Yard will become the Phil and Sandy Grabowski Mile. Thank you to the Grabowskis for this and past generous contributions!

There is still an assortment of naming opportunities remaining:

Restoration of Locomotive No. 15	\$500,000
Station in Three Springs for community use	\$350,000
Saltillo Bridge	\$250,000
Tank house in Saltillo	\$150,000
Saltillo Wye	\$100,000
One mile of track	\$80,000
New Pavilion at Colgate Grove	\$25,000

Contributions to capital projects such as these may be matched by Pennsylvania grant funds on a 2-for-1 basis, which means the value is often tripled. The amounts shown vary between 50% and 100% of the estimated cost of the project. Gifts can be made over a four-year period following an initial gift of 20%. The naming opportunities are for a 20-year period, except in the case of the locomotive where it is for 15 years to match the FRA major inspection requirements.

Perhaps this is also a great opportunity to repeat something from a previous newsletter regarding alternative ways to make your charitable donation. This is not tax advice! Individual tax situations vary; please consult your own tax adviser. This is intended to provide general information about other ways to donate.

Donors aged 70 ½ and older can make tax-free donations from their IRAs, which can be used to satisfy the required minimum distribution from an IRA. The Qualified Charitable Distribution (QCD) rules allow you to give the amount you donate from your IRA directly to a qualified charity without ever receiving it as income. Information can be found by visiting www.irs.gov or consulting your financial/tax adviser.

You can also consider making a gift in your will or trust, or designate the Friends of the East Broad Top, Inc. or EBT Foundation as a beneficiary of any asset account. Naming charities or other organizations/individuals as beneficiaries and allocating among them in whatever percentages you'd like can accomplish your charitable giving objectives.

If you or someone you know might be interested in a naming opportunity, please contact the EBT Foundation at development@eastbroadtop.com. FEBT Fundraising questions can be directed to Fundraising@febt.org.

Both the EBT Foundation and Friends of the East Broad Top are 501(c)(3) organizations. Contributions to both are tax-deductible and will get us closer to complete restoration of the East Broad Top.



The northern end of the Phil and Sandy Grabowski Mile, after FEBT returned it to service in 2023. – Gene Tucker photo

FEBT COMPANY STORE ITEM OF THE MONTH

Saltillo Station in HO Scale

This small station has many features that makes modeling it fun: bay window, loading platform, and small footprint.

Your layout can feature this station! The Saltillo Station kit from B.T.S. Structures is now available at the Company Store. This kit consists of laser-cut basswood, cardstock, and plywood, pre-cut adhesive-backed shingles, signs, and correctly-spaced siding. The tabbed construction eases assembly. Interior partitions are included. HO-scale.

\$59.95

Sorry, Member Discount is not available for this item.



Also available are the HAER
Saltillo Station drawings



Complete Set of 6 Drawings **\$54.00**
Individual Sheets **\$9.00 ea**

Order on-line through the FEBT Company Store website at store.febt.org, using your account or create an account. PayPal, major credit cards, and personal checks payable to FEBT Company Store are accepted.

FEBT COMPANY STORE NEW, BACK IN STOCK AND COMING SOON



Vulcan Truck w/Leaf Springs
Used on Cabooses 27 & 28



Forged U-Shaped Pedestal
Used on Cars
1, 2, 5, 16, 17
2nd 22, 23, 24

HOn3 Trucks 3D Printed by Ric Case

**Check the Company Store
website for availability**



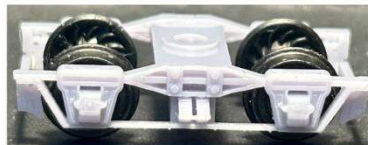
Vulcan Truck w/Coil Springs
Used on Steel Hoppers



Cast U-Shaped Pedestal
Wood Beam Truck
Used on Cars
3, 4, 18, 19, 20, 29



Arch Bar Truck
Used on Early Freight Cars



Brill Truck Used
on coach 6



Arch Bar Truck
Used on Car 6

Order on-line through the FEBT Company Store website at store.febt.org, using your account or create an account. PayPal, major credit cards, and personal checks payable to FEBT Company Store are accepted.

APRIL CAMPAIGN-SUPPORTED ACCOMPLISHMENTS

April was a very exciting month thanks to your generous support of the FEBT Campaign. The biggest news was the groundbreaking and construction start on the Saltillo station. The groundbreaking ceremony on Saturday, April 5, was a big success, with a great turnout of FEBT volunteers, EBTF staff, community leaders, and neighbors. Actual construction began the following Monday with the excavation for the foundation. By Wednesday, April 9, the entire foundation pit had been dug, and the footers had been poured. As of Wednesday, April 16, the foundation walls had been formed and concrete poured, with formwork for the center piers and exterior platform in place and ready for concrete. Stay tuned for more exciting progress.



The project has been made possible by donations to the FEBT Campaigns, as well as a grant from the Narrow Gauge Preservation Foundation. The exterior of the station will be completed by J.L. Swope Construction, Inc. The interior will be finished by FEBT volunteers once funds for the materials are raised, including reinstalling elements of the original station that were saved before its demolition.

The Saltillo Station foundation walls as they were on April 16, 2025, less than two weeks after the groundbreaking ceremony. – John Bowie photo

Your continued support of the FEBT Campaign will allow us to continue and accelerate these and other projects to preserve, restore, and interpret the EBT. The 2025 Campaign runs until Sept. 30, 2025. You may donate online (credit card and PayPal accepted) at the FEBT Company Store, <https://store.febt.org/donate>. If you prefer to send a check or money order payable to FEBT, address it to:

Karen Bulman
FEBT Fundraising Treasurer
P.O. Box 43063
Cincinnati, OH 45243

FEBT is a designated 501(c)(3) organization and donations are tax-deductible in the U.S. – *Karen and Dave Bulman*

APRIL FUNDRAISING UPDATE

Thank you for your support of the 2025 Campaign. April donations totaled \$43,134 in 75 donations, bringing the 2025 Campaign total to \$324,137.

The 2025 Campaign ends September 30. Your continued support will allow us to do more to accelerate the rebirth of the East Broad Top. 2025 Campaign donations beyond the \$270,000 goal will be used to purchase additional track materials for the March to Saltillo, help to finish the Saltillo station interior, and advance other key FEBT restoration projects. FEBT greatly appreciates your continuing help to support its goals of restoring, preserving, and interpreting the East Broad Top Railroad. Thank you!

2025 Campaign Goal:

\$270,000

April Donations:

\$43,134

Campaign Total:

\$324,137 – 120.1%

April donors*:

Mark Baker	Charles S. Bender II	Jerry Bertoldo	William O. Blome
Lucas A. Bonagura, Jr.	Alexander Bowser	James Braum	James Brickley
Charles Brumbelow	Dave & Karen Bulman	David H. Capp	Laurence Carbonetti
Thomas Carlson	Frank Couch	Bruce Courter	David Currier
Daniel W. Despard	Bruce S. Duncan	Linda A. Dvorak	Frank R. Dziama
Wade C. Eagleton	David Eskelund	Donald Fenstermacher	Douglas E. Fink
Edmund M. Fox	Alaric Gallo	Brian F. Gilleran	Warren Greatbatch
Michael Hegedus	William Hessler	Charles W. High	Dave Johnson
Kenneth Joseph	Victor V. Kidd	David Kneisley Sr.	John E. Kokas
Jeff Lakaszcyck	Richard C. Lind	Donald Lotz	Vivian Makin
Robert J. Meckes	William Mosteller	Bradford Paulson	Robert Polasky
Edwin Rappe	Paul Reiss	Michael E. Romansky	Randy Ross
Kevin Rouleau	Anthony Sallo III	Donald Schultz	Tom Shiels
Randy Smith	Peter Suhmann	Marlin R. Taylor	Gene & Deborah Tucker
Brian Wolfe	Terrill L. Woolsey	John S. Yoder	

In Memory of Barbara A. Muldowney:
Ronald J. Muldowney

In Memory of Gordon E. Brinthaup Jr.:
Gordon E. Brinthaup III

* - All donors listed represent donations received between March 22, 2025 and April 21, 2025. Donations received after April 21 will be reported in the June 2025 issue due to press time constraints.

The 2025 Annual Campaign runs October 1, 2024 through September 30, 2025. You may donate online (credit card and PayPal accepted) at the FEBT Company Store, <https://store.febt.org/donate>. If you prefer to send a check or money order payable to FEBT, address it to:

Karen Bulman
FEBT Fundraising Treasurer
P.O. Box 43063
Cincinnati, OH 45243

FEBT is a designated 501(c)(3) organization and donations are tax-deductible in the U.S.

Thank you for your generous support! – *Karen Bulman and Dave Bulman*

APRIL VOLUNTEERS

The following members volunteered in April in Rockhill Furnace, Robertsdale, with the Archives, with the track crew, and/or remotely. Thanks to all FEBT volunteers for their dedicated efforts to preserve, restore, and interpret the EBT.

Bill Adams	Stacey Batovsky	Lawrence Biemiller	Victor Booth
John Bowie	Sue Briggs	Alexander Brown	Chris Brumbaugh-Cayford
Dave Bulman	Karen Bulman	Roy Burnham	Jacob Bury
Dave Capp	Jane Clarke	Pete Clarke	Chris Coleman
Craig Confair	Chris Connacher	Bryce Connaughton	Alex Cook
Philip Coyle	Doug Davenport	Ray Davidowski	Ralph Davidson
Dave Ebright	Jack Fornadley	Larry Fuchs	Al Gallo
Charles Geletzke, Jr	David Getty	Bobby Goldby	Todd Grissinger
Tyler Grissinger	Dave Hart	Charlie High	Dan Horting
Mr. Jackson	Steve Jackson	Huston Jacobs	Steve Jacobs
Dave Johnson	Tom Jordan	Walt Keely	Andrew Kennedy
Wyatt Kindler	Daniel Klinger	Eric Knepp	Ed Kompare
Daniel Lane	Jake Lane	Ben Leese	Kevin Lekas
Kevin Lynch	Mathew Malkiewicz	Hannah Marchok	Christian McCann
Margie McFalls	Ray McFalls	Bob Meek	Curtis Miller
Jessica Moorse	Richard Morse	Isak Motter	Joel Myers
Brady Neiser	Dave Padula	Dave Phillips	Hans Plugge
Rich Poletto	John Quinn	Mateo Quinones	Lee Rainey
Stephen Ramirez	Mark Reese	Blake Rimmey	Rick Rourke
Justin Santichen	Tim Schindele	Conrad Schlenker	Christian Shelley
Daniel Solis	Blair Stewart	Roger Stier	Jim Troup
Gene Tucker	Jared Ughetto	Dick Ullery	Andy VanScyoc
Mike Wahler	Matt Wall	Bill Wheeler	John Widmeyer
Scarlett Wirt	Tristan Wise	Connie Wolfe	Terry Wolfe
Charlie Wootton			

COAL MINERS MUSEUM SET FOR 2025 SEASON

The nonprofit Broad Top Area Coal Miners Historical Society is gearing up for its seasonal opening, slated for 10 AM.- 5 PM on Saturday, May 3. Society officials are playing catch-up ball with its work sessions at the Coal Miners Museum, located in the Reality Theatre, Robertsdale, because winter weather made it difficult for society members to access the museum over the past few months.

In addition to the traditional cleanup duties at the museum, society workers will update some of its exhibits and create a few new ones, thanks to donations of coal mining relics by different patrons. Heading the list of work is the inventorying and identification of mining equipment, tools and associated items which will be overseen by new board member Phil Dolte. Dolte is a retired coal miner. Other improvements will involve the society's research library which is overseen by the society's co-librarians Carolyn Carroll and Dennie Fields. The research library, located on the second floor balcony of the museum, needs additional space and other enhancements.



Phil Dolte, left, and fellow new board member Terry Barber work on displays inside the Miners Museum. – Ron Morgan photo

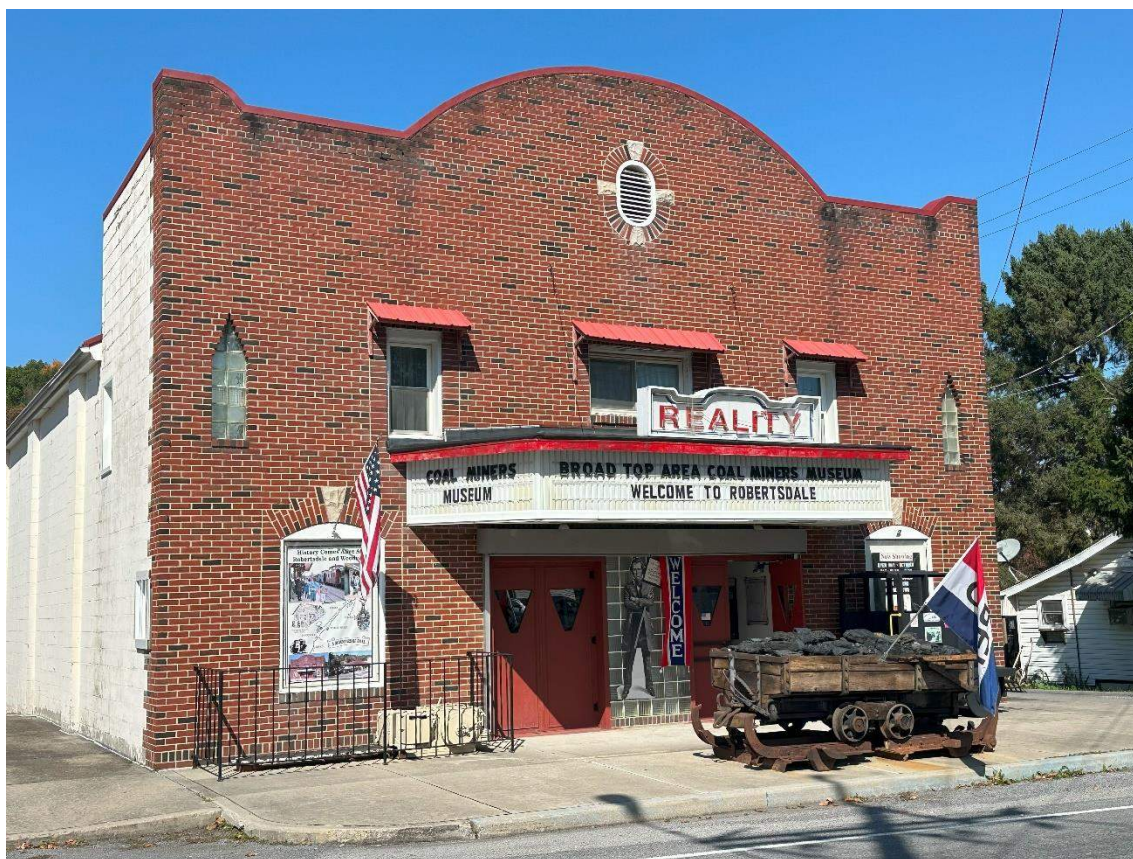
The society recently purchased a new computer system that will be operated by Carroll and Fields, while plans are also being studied for the opening of the research library and museum one day during the week as well as Saturdays. Other areas of work involve upgrading the theatre stage and audio/visual equipment that will allow the presentation of movies, etc. on the giant Reality Theatre CinemaScope screen and sound system.

During 2025, the Coal Miners Museum will also be involved in cooperative heritage activities with the nearby Friends of the East Broad Top Museum as restoration of the historic narrow-gauge EBT railroad continues. One of those activities will be the sponsorship of the new Robertsedale-Wood Heritage Day that will feature steam railroad and coal mining sites in the communities, both of which are National Historic Districts, designated by the U.S. National Park Service in the early 1990s. The day-long Heritage Day celebration, scheduled for Saturday, July 19, replaces the Robertsedale Community & Heritage Days observance originally held in mid-August. The original August event was cancelled due to several conflicts including the weather, poor turnout, and the need for volunteers. Additional information about the new, two-community celebration will be forthcoming.

For the near future, both the Coal Miners Museum and FEBT Museum will be open on Saturdays, between May and the end of October, to coincide with activities at the EBT in southern Huntingdon County. Both organizations will also be open throughout the year for other extraordinary events and group tours.

Also on the agenda are plans for improvements at the Robertsedale Italian/Sicilian Cemetery, located near the museum, just off Route 913. Help is also needed to assist with grass cutting at the cemetery. The upcoming graveyard project will be chaired by board member Bob Watkins. Both the cemetery and several coal mining and railroading-related sites in Wood will be incorporated into tour activities as well as the FEBT's railbike excursions.

People interested in assisting in the various museum activities should telephone 814-907-1788 for more details. – *Ron Morgan*



The Broad Top Area Coal Miners Museum in October 2024. – Doug Davenport photo

UPCOMING EVENTS

Date	Host	Event
May 3	FEBT	FEBT Museum Opening Day 2025
May 3	BTACMHS	Broad Top Area Coal Miners Museum Opening Day 2025
May 3	FEBT	Young Easties Work Session (Rockhill)
May 3-4	FEBT	Rockhill Work Session
May 17-18	EBT	EBT Goes to War!
May 17	EBT	Trackside Tastes & Tunes
May 19-23	FEBT	Rockhill Spring Work Week
June 7-8	FEBT	Rockhill Work Session
June 14	FEBT	Young Easties Work Session (Robertsdale)
June 14	EBT	Trackside Tastes & Tunes
June 14	FEBT	FEBT Museum Archives Day
June 28	FEBT	Young Easties Work Session (Rockhill)
June 28-29	FEBT	Rockhill Work Session
July 12	FEBT	Young Easties Work Session (Robertsdale)
July 12-13	FEBT	Rockhill Work Session
July 19	FEBT/BTACMHS	Robertsdale-Wood Heritage Day
July 26	EBT	Trackside Tastes & Tunes
August 2	FEBT	Young Easties Work Session (Rockhill)
August 2-3	FEBT	Rockhill Work Session
August 9	FEBT	FEBT Museum Archives Day
August 23-24	FEBT	Rockhill Work Session
August 30	EBT	Trackside Tastes & Tunes
September 13	FEBT	Young Easties Work Session (Rockhill)
September 13-14	FEBT	Rockhill Work Session
September 15-19	FEBT	Rockhill Fall Work Week
September 17-21	EBT	Ragtime at the Railroad
September 20	EBT	Trackside Tastes & Tunes
October 3, 4, 5	FEBT	2025 Fall Reunion
November 1	FEBT	Young Easties Work Session (Rockhill)
November 1-2	FEBT	Rockhill Work Session
November 28-30	EBT	Christmas in Coal Country
December 5-7, 12-14, 19-21	EBT	Christmas in Coal Country

<u>Hosts:</u>	FEBT	Friends of the East Broad Top	www.febt.org
	EBT	East Broad Top Railroad	www.eastbroadtop.com
	RTM	Rockhill Trolley Museum	www.rockhilltrolley.org
	BTACMHS	Broad Top Area Coal Miners Historical Society	broadtopminersmuseum.com

UPCOMING ROCKHILL FURNACE VOLUNTEER SESSIONS

The next Rockhill Restoration Work Weekend will take place Saturday and Sunday, May 4 and 5. The remainder of the 2025 Rockhill Furnace Work Session schedule is now available. Please consider coming out for one or more of the sessions to help us continue to preserve and restore the East Broad Top. If you are interested in participating in the Rockhill Furnace volunteer sessions including track work, and are not on the current signup distribution, please contact Charlie Wootton, the Rockhill Furnace volunteer coordinator, at rhrestoration@febt.org. Visit our website at [Volunteer – Friends of the East Broad Top](http://Volunteer-Friends of the East Broad Top) for more information on all of our volunteer projects and how you can participate. If you have questions about volunteering, or have suggestions for our volunteer recruiting efforts, please email me at volunteer@febt.org. – Dave Bulman

FEBT MUSEUM SCHEDULE

The FEBT Museum will be open for the 2025 season on Saturdays beginning May 3, 2025. Operating hours are 10:00 AM to 5:00 PM.

Archives Days: June 14, August 9



Pete Clarke instructs FEBT Museum hosts during host training on April 25, 2025. – Ed DeMott photo

ABOUT THIS ORGANIZATION

Friends of the East Broad Top, Inc. (FEBT) is a 501(c)(3) nonprofit, historical, and educational society dedicated to the preservation, restoration, and interpretation of the East Broad Top Railroad National Historic Landmark in Huntingdon County, Pennsylvania. It was organized in 1983 and now boasts over 2,200 members. FEBT publishes an award-winning magazine, *Timber Transfer*, and a monthly e-newsletter, and operates a museum in Robertsdale PA, the EBT's southern terminus. See febt.org/ for more information.

ABOUT THIS NEWSLETTER

The Friends of the East Broad Top Newsletter is a monthly digital-only periodical. Started in 2020, it is intended to keep members and donors apprised of what the organization has done and will be doing. The FEBT Newsletter is distributed by email to the current list of members and donors, and is a privilege of contributing to the FEBT's cause of preserving, restoring, and interpreting the East Broad Top Railroad for current and future generations. The editor can be contacted at Newsletter@febt.org. Previous issues of the FEBT Newsletter may be found at febt.org/newsletter. Press time for information submitted is 8:00 PM Eastern time on the 25th of each month. Events occurring after the 25th, such as donations and memberships, will be considered part of the following month's information.