



www.febt.org

NEWSLETTER

Preservation Restoration Interpretation

Volume 6, Issue 3

March 2025



Eric Knepp installs hardware on the wooden seat frames in Combine 14. – Al Gallo photo

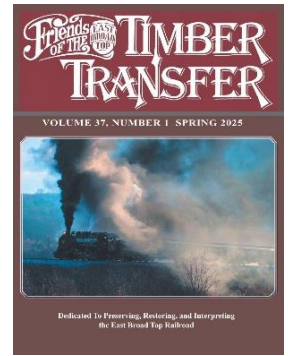
IN THIS ISSUE:

Spring <i>Timber Transfer</i> Available for Download	3
Nominations Open for 2025 Board Elections	3
February Campaign-Supported Accomplishments	5
February Fundraising Update	6
February Rockhill Work Session Notes	7
Young Easties' Second Season is Being Planned	8
Company Store Item of the Month	9
Robertsdale Notes from February	10
Track Work in the Cold of Winter	10
FEBT Launches New Outreach Program	12
EBT Archives Hosts NEH Grant Project: "Supply Kit Social"	12
One Archives Inventory Project Wraps Up, Finally	13
February Volunteers	14
Upcoming Events	15
Upcoming Rockhill Furnace Volunteer Sessions	15
FEBT Museum Schedule	16

Wyatt Kindler works to reassemble the belt driven forging hammer in the Blacksmith Shop. – Al Gallo photo.



SPRING *TIMBER TRANSFER* AVAILABLE FOR DOWNLOAD



The Spring 2025 issue of FEBT's finest publication is available for digital download from the FEBT Company Store. The traditional paper copies will be mailed this week. Topics in this issue include coal boring on the Broad Top, FEBT window repair during the final Kovalchick era years, the story of Coach 5's departure from the EBT, departed and repatriated artifacts, and the final installment of the Road Changes series. – *Doug Davenport*

NOMINATIONS OPEN FOR 2025 BOARD ELECTIONS

Four of the nine members of the Friends of the East Broad Top board of directors will see their two-year terms end this spring: Bill Adams, who is the vice president and chief financial officer; Dave Bulman, the fundraising chair; Curt Miller, the board secretary; and Andy Van Scyoc, the board president. All four have agreed to be considered for renomination, but other nominations are also welcome.

As usual, a board member has agreed to serve as chair of a committee to consider nominations. This year that board member is Lawrence Biemiller, who in turn asked longtime FEBT members Dave Phillips and Dick Ullery to join him on the committee.

Do you know of an FEBT member you'd like to nominate for a board seat? While in recent years we've only had as many nominees as we have seats up for election, previously elections were sometimes contested (almost always in a friendly fashion).

If you would like to suggest someone as a possible nominee, please send the person's name and email address by March 15 to Lawrence at biemiller@mac.com, and he'll send the person the committee's questionnaire for potential nominees. – *Lawrence Biemiller*



The Board of Directors pose at Colgate Grove during the FEBT 40th Anniversary celebration. – Matthew Malkiewicz photo

FEBRUARY CAMPAIGN-SUPPORTED ACCOMPLISHMENTS

Exciting activity continued on multiple projects in February supported by your generous donations to the FEBT Campaign.

Robertsdale Enginehouse

On January 29, an initial inspection of the Robertsdale Enginehouse foundation was made by P. Joseph Lehman Inc. of Hollidaysburg. A second inspection, after the snow has cleared, will be conducted to fully determine the foundation's fitness to be built upon again. These inspections, funded by the FEBT campaign, are key to determining the scope and plans for the eventual reconstruction of the enginehouse.

EBT Foundation's James Roslund and FEBT's Doug Davenport confer with P. Joseph Lehman Inc. during the initial foundation inspection on January 29. – Al Gallo photo



March to Saltillo



FEBT volunteers and EBTF track staff assemble track adjacent to the Southern Huntingdon County HS using material funded by the FEBT campaign. – Al Gallo photo.

The combined EBTF and FEBT track crew continued the March to Saltillo in February, assembling track between the 994 crossing and the high school north driveway (see article on Page 10 for more details). The track materials were purchased with prior FEBT campaign donations. On February 6, the FEBT board authorized \$20,000 from the 2025 Campaign to fund clearing and grading of the right of way from the Saltillo station site to beyond the north siding switch. G&H Anderson Excavating quickly began working to remove trees and brush from the ROW.

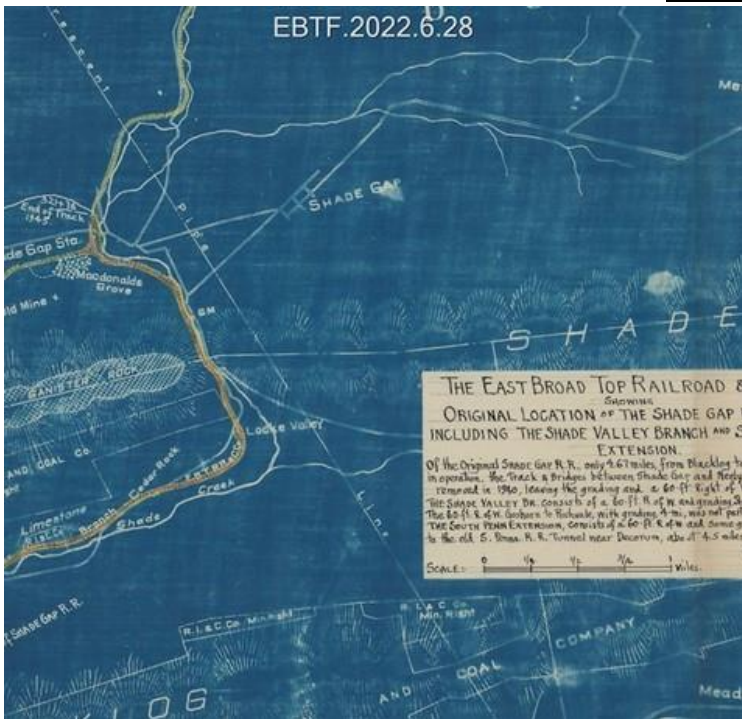
Salttillo Station

J. L. Swope Construction is preparing for the start of construction of the station, including ordering materials with long lead times. Construction is expected to start this spring.

*Clearing of the EBT right of way north of the Salttillo station site is underway by G&H Anderson
Excavating, funded by the FEBT Campaign. – Dan Cupper photo.*



Archives



On Saturday, February 22, the final group activity for the 2023-2025 NEH Preservation Assistance Grant Disaster Response Project was held to assemble new disaster recovery kits. Held at the Orbisonia Depot, seven members of the local cultural heritage community and the Archives staff assembled four kits that are now stored in Mount Union, Orbisonia-Rockhill Furnace, Three Springs-Salttillo, and Robertsdale. These kits have a variety of recovery supplies in case of any type of emergency that might affect local historical collections (see the article on Page 12 for more details).

Scanning and cataloging of a variety of collections continues for release to the public. This month, the Shade Gap Railroad Company Stockholders and Directors Minutes, No. 1, 1883-1913 was released along with a detailed index authored by Vagel Keller. These latest releases can be found here:

<https://ebtarchives.catalogaccess.com/exhibits/36>. The Archives work is supported by the FEBT Campaign.

Map showing the original location of the Shade Gap Railroad. – EBT Archives collection

Your continued support of the FEBT Campaign will allow us to continue and accelerate these and other projects to preserve, restore, and interpret the EBT. The 2025 Campaign runs until Sept. 30, 2025. You may donate online (credit card and Paypal accepted) at the FEBT Company Store, <https://store.febt.org/donate>. If you prefer to send a check or money order payable to FEBT, address it to:

Karen Bulman
FEBT Fundraising Treasurer
P.O. Box 43063
Cincinnati, OH 45243

FEBT is a designated 501(c)(3) organization and donations are tax-deductible in the U.S. – *Karen and Dave Bulman*

FEBRUARY FUNDRAISING UPDATE

Thank you for your continued support of the 2025 Campaign. February donations totaled \$30,225 in 67 donations, bringing the 2025 Campaign total to \$259,053. This is a new high for the campaign at the end of January. FEBT greatly appreciates your help to support its goals of restoring, preserving, and interpreting the East Broad Top Railroad. Thank you!

2025 Campaign Goal:
\$270,000

February Donations:
\$30,225

Campaign Total:
\$259,053 – 95.9%

February donors*:

Bryan Becker	Casper Bocklage	Shaun Booher	Jim Botsko
Bruce A. Bowie	Alexander Bowser	James Braum	Tim Bristow
Diane & David Campbell		David H. Capp	Rodney Case
Wade Colyer	Robert Courneya	Bruce Courter	Walter Dietz
Frank R. Dziama	Wade C. Eagleton	Bernd Fanghanel	Douglas E. Fink
William Fitch	Michael Hegedus	Charles W. High	David Homer
Cliff Howell	Dave Johnson	Victor V. Kidd	Greg Kifer
David Kneisley Sr.	John E. Kokas	Keith A. Kreider	Douglas O. Langdon
Ed Lecuyer	Richard C. Lind	Irvine & Mary Milheim	
J. Harold Mohler	Edward Monnie	Jon Pankau	Abby Ershow & Hans Plugge
James Pontz	Bonita Potts-Leisher	Stephen Puzio	Louis Read
Mary Beth & David Redding		Dave Reichert	Ross Rowland, Jr.
Richard G. Rutledge	Anthony Sallo III	Daniel Schmidt	Rev. Samuel V. Scott
Dale Secker	Jerry Severson	Peter Smykla	John Thompson
Walter Weart	Briane Wolfe	Terrill L. Woolsey	John S. Yoder

* - All donors listed represent donations received between January 22, 2025 and February 21, 2025. Donations received after February 21 will be reported in the April 2025 issue due to press time constraints.

The 2025 Annual Campaign runs October 1, 2024 through September 30, 2025. You may donate online (credit card and PayPal accepted) at the FEBT Company Store, <https://store.febt.org/donate>. If you prefer to send a check or money order payable to FEBT, address it to:

Karen Bulman
FEBT Fundraising Treasurer
P.O. Box 43063
Cincinnati, OH 45243

FEBT is a designated 501(c)(3) organization and donations are tax-deductible in the U.S.

Thank you for your generous support! – *Karen Bulman and Dave Bulman*

Tom Perman places the last of the Storehouse hardware in the appropriate bins. – Al Gallo photo.



FEBRUARY ROCKHILL WORK SESSION NOTES

FEBT restoration efforts in Rockhill Furnace moved forward during the February work weekend. We had eighteen volunteers on Saturday Feb. 1st and twelve on Sunday the 2nd. FEBT crews continued work on Combine 14, shop windows, the Storehouse, and new efforts were begun in the Blacksmith Shop.

Progress on Combine 14 continued in multiple areas. Volunteers reinstalled truck safety chain hooks, completed the assembly of the fourth and final set of platform steps, continued electrical lighting box assembly and installation, continued window and trim installation, and began installation of seat frame hardware in the passenger compartment.



Above: FEBT volunteers gather in the paint shop prior to the start of the February 1 work session. – Al Gallo photo

Left: Andy Van Scyoc and Dave Ebright assemble the last set of platform steps for Combine 14. – Al Gallo photo

Bottom left: George Dvorak cuts new glass panes in the carpenter shop. – Al Gallo photo

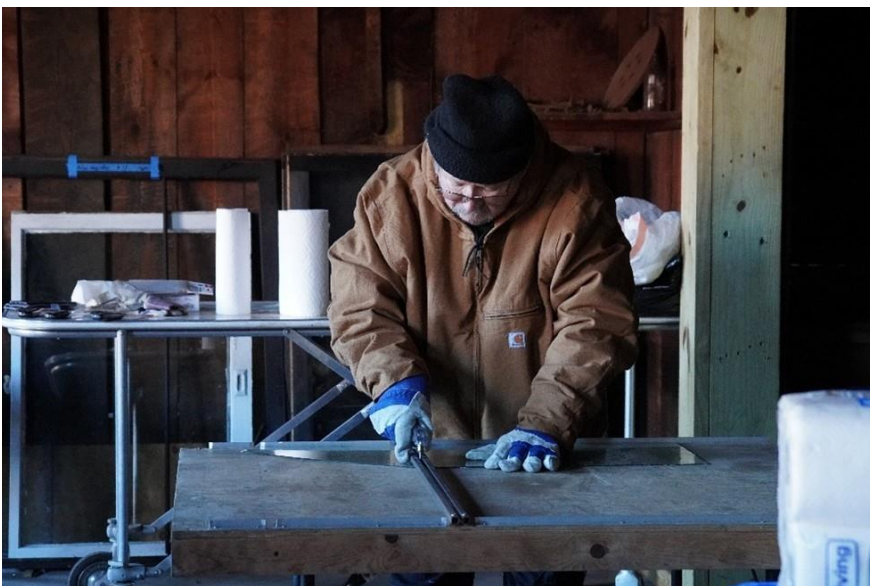


The shop window crew continued scraping and prepping original sashes for restoration, cutting new glass panes, and trimming new replacement sashes for use.

The Storehouse crew reached a milestone with the completion of sorting and storing the last of the Storehouse 1 hardware into bins on the first and second floors.

Finally, volunteers in the blacksmith shop replaced the wooden posts under an anvil and a large vise, and disassembled, cleaned, and reassembled the belt-driven Barbour-Stockwell forging hammer.

Our volunteers in Rockhill are making great progress, but there is much more to do. We can use more hands on all projects. If you'd like to help with these and other projects, please consider joining us! – Dave Bulman



YOUNG EASTIES' SECOND SEASON IS BEING PLANNED

Last year, the FEBT initiated a new program for prospective railroaders ages 13 through 17 (or to age 18, if they are still in high school). The first season of the Young Easties program was enthusiastically received, with significant levels of interest and participation.

FEBT has formed a planning committee which has been hard at work crafting this year's offerings for Young Easties. We intend to offer seven dates for interested teens to learn more about the East Broad Top and about railroads and railroading in general, as well as learn by doing hands-on work at the railroad and to enjoy a train ride. Each session will be lead and supervised by adult FEBT members, each of whom possess the background clearances that are required by Pennsylvania law.

In general, each of this year's events will offer regular work sessions for all returning Young Easties. In addition, every other month we are planning on offering an orientation tailored to first-time participants. Each session will take place in Rockhill Furnace, unless otherwise indicated.

The tentative schedule looks like this:

- May 3: Returning Young Easties may choose either a regular work session in conjunction with FEBT members (task TBA), or they may choose to join the orientation session with first-time attendees. For first-time participants, their day will begin with an orientation session. Meeting at 9:00 a.m. at the Orbisonia Station, participants will receive an introduction to the East Broad Top. A hands-on work project will follow (track work in the Rockhill yard is envisioned for the first session). Following lunch, a tour of EBT's shop complex is planned. A train ride for participants and their parents/adults will take place at 3:00 p.m. The day will wrap up at 4:00 p.m.
- June 7: An orientation session in Robertsdale (Introduction to the railroad's southern terminus, tours of the mines, railbike rides and a hands-on project.) New and returning Young Easties welcome.
- June 28: A work session, in conjunction with FEBT members (task TBA). (No train ride for this session.)
- July 12: A work session in Robertsdale (task(s) TBA)
- August 2: An orientation session for first-time participants and a regular work session for returning Young Easties similar to May 3.
- Sept. 13: A work session (details and task(s) TBA)
- Nov. 1: A work session, in-conjunction with FEBT members (task TBA). (No train ride for this session.)

Variations to this schedule may take place, depending on the railroad's needs, availability of materials for hands-on projects, and other variables.

We may alter this schedule in order to include a session in Saltillo. FEBT is funding the reconstruction of the Saltillo station, whose groundbreaking may take place this year.

More information will follow in April's newsletter. Meanwhile, plan to put these dates on your calendar. We look forward to welcoming new participants, as well as returnees, to this year's offerings. – Gene Tucker



Young Easties work on replacing ties in the Rockhill Yard during the September 2024 session. – Justin Santichen photo

FEBT COMPANY STORE ITEM OF THE MONTH

Salttillo Station in HO Scale

This small station has many features that makes modeling it fun: bay window, loading platform, and small footprint.

Your layout can feature this station! The Saltillo Station kit from B.T.S. Structures is now available at the Company Store. This kit consists of laser-cut basswood, cardstock, and plywood, pre-cut adhesive-backed shingles, signs, and correctly-spaced siding. The tabbed construction eases assembly. Interior partitions are included. HO-scale.

\$59.95

Sorry, Member Discount is not available for this item.



Also available are the HAER
Salttillo Station drawings



Complete Set of 6 Drawings **\$54.00**
Individual Sheets **\$9.00 ea**

Order on-line through the FEBT Company Store website at store.febt.org, using your account or create an account. PayPal, major credit cards, and personal checks payable to FEBT Company Store are accepted.

FEBT COMPANY STORE NEW, BACK IN STOCK AND COMING SOON



Vulcan Truck w/Leaf Springs
Used on Caboosees 27 & 28



Forged U-Shaped Pedestal
Used on Cars
1,2,5,16,17
2nd 22, 23, 24

HOn3 Trucks Galore 3D Printed by Ric Case

All trucks have 26"
Kadee Wheelsets



Vulcan Truck w/Coil Springs
Used on Steel Hoppers



Cast U-Shaped Pedestal
Wood Beam Truck
Used on Cars
3, 4, 18, 19, 20, 29



Arch Bar Truck
Used on Early Freight Cars



Brill Truck Used
on coach 6



Arch Bar Truck
Used on Car 6

Order on-line through the FEBT Company Store website at store.febt.org, using your account or create an account. PayPal, major credit cards, and personal checks payable to FEBT Company Store are accepted.

ROBERTSDALE NOTES FROM FEBRUARY

Man, it gets cold on the top of Broad Top Mountain!

So, being sensible people, we've sent the month planning from home. Just in case that surprises you, allow me to point out that when you visit this year the museum will not be the same as it was when you visited last year. Museum curator Scarlett Wirt and EBT Archivist Julie Fether Rockwell (assisted by Jane Clarke) have worked up a schedule for new displays this year. Did you catch that word "schedule?" The displays not only change from year to year, but change within the year. You should assume the same will be true again next year.

Allow me to wander just a bit. Years ago, I used to go to the FEBT reunion full of plans to take the perfect photograph. Without fail, after I had gotten to a spot early and planned out the perfect shot, someone would walk in front of me and set up for their shot (ruining my shot). Eventually, I learned that when searching for the perfect photograph that it's better to go on a regular weekend and then use the reunion weekend for saying "Hi" and catching up with other members, checking out the Company Store, and listening to the talks offered. In the same way, if you only visit the museum during the reunion, you probably don't ever have the time to relax and take the time to study all the displays and all of the information available to you there. Every host has different interests, so the walking tours vary depending on the host leading it (and the questions the guests ask). Come back and take a tour with a different host. And don't forget to allocate the time needed to visit the Miners Museum!

It's still winter, but by the time you read this we will have been open already. The Rockhill Trolley museum is hosting a regional event for trolley museums. They will have visited Robertsdale on Friday February 28. Let's hope that was a warm day!

The museum will be open on April 12 and 19 during the EBT's Easter on the Rails event. We hope you'll be able to visit the museum and see what's new and improved. Oh, and the leaves will not yet be out, so you can see so much more on a walking (or if it's warm enough, a railbike) tour. – *Pete Clarke*

TRACK WORK IN THE COLD OF WINTER

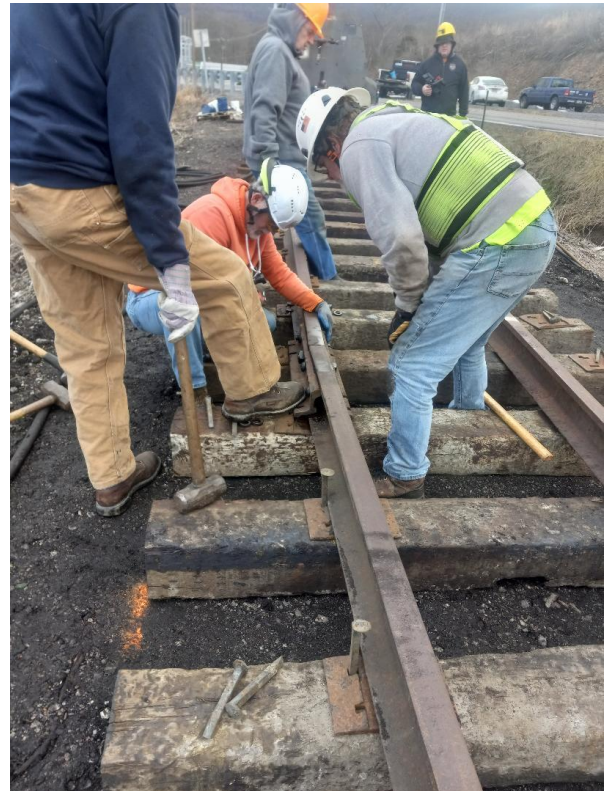
The March to Saltillo

Owing to the vagaries of Mother Nature's wintry offerings, FEBT's track personnel have managed to have only one work session since the last report.

On Tuesday, February 4, 10 FEBT personnel joined the railroad's full-time staff, constructing more track just south of the PA Route 994 grade crossing. Assembled, fully gauged, and spiked track now extends to a point about 175 feet south of the crossing, while assembled track now reaches a point about 325 feet south of the crossing. (If you're keeping score, that's about halfway between the 994 crossing and the northern driveway in front of Southern Huntingdon High School.

Alas, Mother Nature didn't leave us alone as we worked that day; air temperatures were in the low 40s, but a stiff wind out of the west made for chilly working conditions. In spite of all that, crew members who've been suffering from withdrawal from track work made the best of the situation. (A bit of track crew humor: We like to say there's a condition known as "Railroad Disease"...this is a

John Widmeyer and John Quinn assemble a track joint near Southern Huntingdon HS on February 4. – Gene Tucker photo



condition that's not limited to track workers. We quickly add that there's no known cure for this condition, but there is group therapy.)

Clearing in Saltillo

At its February 6 meeting, FEBT's Board of Directors authorized underwriting the cost of the clearing of brush and trees in Saltillo. Accordingly, on Thursday, February 13, G & H Anderson brought heavy equipment to begin the process of removing some large trees and previously-cut brush and small trees. Work began to clear the trees and the downed material the next day.

New Tie Inserter

The Geismar tie inserter arrived from Walkersville Southern Railroad on Tuesday, January 28. It was delivered to the temporary track (constructed earlier) in the Boney Pile in Rockhill. Shortly thereafter, the railroad's full-time track crew began a thorough assessment of the machine's condition. Along the way, they did some routine maintenance and replaced some parts (hydraulic hoses, e.g.). They've also begun to use the machine in its temporary location on a limited basis to learn its capabilities. This new addition significantly improves the track department's capabilities going forward.

Taking It Apart So as to Put It Together Again

FEBT personnel have been tasked to begin the process of dismantling joints in the track in front of Southern Huntingdon High School. This work is slated to take place during FEBT's March Work Weekend, on Saturday, March 1.

Accomplishing this work will allow the reconstruction of track in front of the high school once the school year is finished in June. As part of the long-term plan, the track currently in place is expected to be upgraded from 85-pound rail to 100-pound. – *Gene Tucker*



A view of the clearing work done between Three Springs and Saltillo on February 22, 2025. – Daniel Lane photo

FEBT LAUNCHES NEW OUTREACH PROGRAM

The FEBT Outreach Program is underway. The goal of the program is to help bring awareness about the benefits and opportunities provided by becoming a member of the Friends. As members, we are privileged to be able to participate in the restoration and interpretation of the East Broad Top Railroad by volunteering time and skills, or by helping to fund the various projects through financial contributions. We enjoy access to some areas of the railroad that are not open to the general public. Events such as the annual reunion provide an opportunity to come together to share our interest in the EBT and enjoy the company of other members.

To accomplish this, we are looking for members who are interested in helping with events throughout the year. The tasks include staffing an FEBT table with a display and information about our organization at community gatherings in towns served by the railroad as well as at train shows. The train shows can be near where you live even if it is not close to the EBT. In this way, we will be able to get exposure to a wider audience. A slide show is being finalized that can be run on a laptop to show the progress of the work being done on the railroad to help attract attention to our display or used as a stand alone presentation. Other materials needed to set up a display for a meeting or show will be provided for each event.

In addition to events currently on the schedule for this year, we are interested in learning about new opportunities. If you are interested in helping with the Outreach Program, please contact Ed Kompare at edward.kompare@philips.com for more information. – *Ed Kompare*

EBT ARCHIVES HOSTS NEH GRANT PROJECT: “SUPPLY KIT SOCIAL”



Above: Board member Andy McNitt and president Murray Africa of the Mount Union Area Historical Society showcase their new supply kit for Mount Union. – Julie Fether Rockwell photo

Right: Carolyn Carroll and Dennis Fields from the Broad Top Area Coal Miners Museum with Roy Stevens and Huntingdon County Historical Society Executive Director Margaret Skrivseth engage in conversation about the new supply kits. – Julie Fether Rockwell photo

The final group activity for the Archives’ 2023-2025 NEH Preservation Assistance Grant Disaster Response Planning and Environmental Monitoring Project was held on Saturday, February 22, at the Orbisonia Depot in Rockhill Furnace. Seven community participants representing the local cultural heritage organizations in Southern Huntingdon County assisted Archives staff Julie Fether Rockwell and Sammy Bellin in assembling four new emergency-disaster recovery kits funded by the grant. The recovery kits are now stored in Mount Union, Orbisonia-Rockhill Furnace, Three Springs-Salttillo, and Robertsdale.

Each kit has replicative supplies stored in case of a collections emergency that could affect historic documents and objects, such as fire, water, or other environmental and man-made threats. The kits include but are not limited to safety gear (PPE), utility tools, containers, and salvage/clean up supplies. In addition to the kits, each participating cultural heritage organization received a complimentary flash drive with an uploaded Emergency Planning and Response Toolkit. The toolkit includes documentation such as disaster plan and pocket response plan templates, forms, supply inventory lists, and educational materials and resources gathered from various sources such as the Conservation Center for Art and Historic Artifacts and the Northeast Document Conservation Center.



The Foundation and Friends, that jointly operate the Archives, thank the following area cultural heritage organizations and their members who have participated in the 2-year grant project: Juniata College’s Statton Learning Commons, Huntingdon County Historical Society, Bricktown Museum, Mount Union Area Historical Society, Orbisonia-Rockhill Furnace Historical Society, Three Springs-Salttillo Area Historical Society, FEBT Robertsdale Museum, and Broad Top Area Coal Miners Museum. Special thanks to the Three Springs Volunteer Fire Company that hosted and participated in the spring 2024 hands-on disaster response workshop.

The new “cultural resilience” team will continue to work together to build a strong response collective in case of an emergency, and work successfully with local emergency responders and the county’s emergency management agency. The goal is to be prepared enough so that the supply kits never have to be used, but if there is a need for a collections emergency response, the team knows what to do. – Julie Fether Rockwell

ONE ARCHIVES INVENTORY PROJECT WRAPS UP, FINALLY

What's an FEBT tour guide do in the off season? Helping in Archives & Special Collections is almost always fascinating. Sure, it's often filthy and occasionally it's moldy, too, but if you're a longtime East Broad Top fan, unrolling drawings that no one has seen in decades is a rewarding way to spend a winter afternoon.



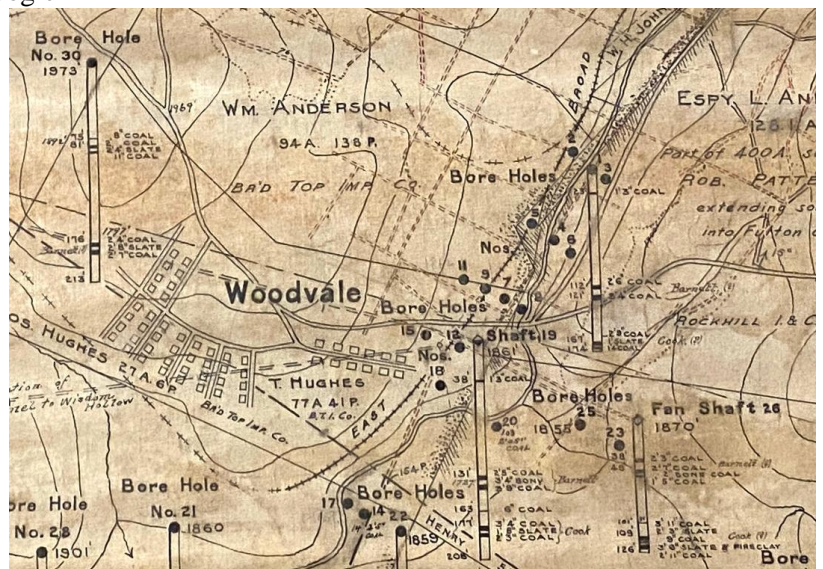
As it happens, in February the archives staff and volunteers finished a year-long effort to inventory hundreds of drawings and blueprints that had been stored in the uppermost reaches of the vault in the Chief Engineer's office in the Orbisonia station. These rolled-up documents had been brought to the station when the Rockhill Iron & Coal Company office in Robertsdale was rockhilled out. One story has it that they were tossed in the back of a pickup on a rainy day. In any event, it appears that a couple of extra levels of wooden bins were added beneath the ceiling of the vault, and the rolls were stuffed in.

In early March of 2024, Archives Technician Sammy Bellin oversaw bringing the rolls down to floor level, a project that required climbing a ladder and then twisting around to face the other direction so the rolls could be pulled out and handed down. Some of the rolls were blueprint paper, some were drawing or tracing paper, and some were drafting linen. Some were wrapped around long wooden dowels, a few were in tin tubes, and at least one roll was wrapped in newspaper from the early 1930s. Just getting all these down was an undertaking, and a few large items had to be left up where they were because we couldn't figure out how to move them.

Left: Rolled drawings before removal from the top of the Chief Engineer's vault. – Lawrence Biemiller photo
Below: Detail of a map showing RI&C lands with the "location of coal mines, drifts, coal outcrops, bore holes, &c. to accompany report on same." Note the cross-sections of the bore holes drawn in. – EBT Archives collection

The rolls — some 275 of them — were placed in deep plastic bins to await inventorying. Last summer's archives intern, Andi Bradsher, inventoried nearly 100 in a Google spreadsheet, noting the material, what was drawn on it, the size, the condition, any date or other information mentioned, and so forth. Then she put them in numbered tube boxes, so the drawings in them can be located if necessary. She was the first to see the remarkable drawings of iron-furnace features, for instance, but also the first to puzzle over what she recorded as an "Untitled drawing of an unknown nature, created in red and black ink." The rolls contain lots of these mysteries.

There are also lots of mine-gallery maps and property maps, both of Rockhill Iron & Coal lands and of the lands of other companies — the Colonial Iron Co., the Mooredale Mine, and more. Some drawings mark the locations of fan houses or power





lines or water supplies, some show areas that have been mined out, and one shows the contours of land around the Hoover Dam — not the big one out west, but a much smaller dam just south of Woodvale. Many of the drawings are in good shape, some are damaged around the edges, and some had to be taken outside so mold could be brushed off.

Once Bradsher’s internship ended, volunteers took up the inventorying – Deb Tucker, Craig Miller, Roger Stier, and myself – all of us working closely with Bellin and Archivist Julie Rockwell. The rolls ended up filling 30 tube boxes, adding to the 66 tube boxes already filled with inventoried maps and drawings.

As it happens, the inventory project was wrapping up not long after two wooden crates of bore-hole samples were found among the railroad’s patterns and brought to the Archives. Among the final drawings inventoried were several related to bore holes, including a drawing showing vertical sections of the holes from west to east across RI&C property and another showing the company’s lands with the “location of coal mines, drifts, coal outcrops, bore holes, &c. to accompany report on same.” Rockwell may display one of these drawings, along with a crate of the samples, this coming season at the Friends’ museum in Robertsdale. – *Lawrence Biemiller*

Bore-hole samples discovered among the railroad’s patterns. – Lawrence Biemiller photo

FEBRUARY VOLUNTEERS

The following members volunteered in February in Rockhill Furnace, Robertsdale, with the Archives, with the track crew, and/or remotely. Thanks to all FEBT volunteers for their dedicated efforts to preserve, restore, and interpret the EBT.

Bill Adams
 Dave Bulman
 Alex Cook
 Ron Elliot
 Vagel Keller
 Daniel Lane
 Curtis Miller
 Lee Rainey
 Jared Ughetto
 Andy Van Scyoc
 John Widmeyer
 Charlie Wootton

Jerry Bertoldo
 Karen Bulman
 Doug Davenport
 Al Gallo
 Wyatt Kindler
 Hannah Marchok
 Dave Padula
 Blake Rimmey
 Dick Ullery
 Bill Wheeler
 Scarlett Wirt

Lawrence Biemiller
 Chris Coleman
 George Dvorak
 Bobby Goldby
 Eric Knepp
 Christian McCann
 Tom Perman
 Rick Rourke

John Bowie
 Craig Confair
 Dave Ebright
 Andrew Greene
 Ed Kompare
 Craig Miller
 John Quinn
 Gene Tucker

MEMBERSHIP BOX SCORE

The Friends of the East Broad Top
 membership is up to
2209

UPCOMING EVENTS

Date	Host	Event
March 1-2	FEBT	Rockhill Work Session
April 5-6	FEBT	Rockhill Work Session
April 12, 13, 19	EBT	Easter on the Rails
May 3	FEBT	FEBT Museum Opening Day 2025
May 3	BTACMHS	Broad Top Area Coal Miners Museum Opening Day 2025
May 3	FEBT	Young Easties Work Session (Rockhill)
May 3-4	FEBT	Rockhill Work Session
May 17-18	EBT	EBT Goes to War!
May 17	EBT	Trackside Tastes & Tunes
May 19-23	FEBT	Rockhill Spring Work Week
June 7	FEBT	Young Easties Work Session (Robertsdale)
June 7-8	FEBT	Rockhill Work Session
June 14	EBT	Trackside Tastes & Tunes
June 28	FEBT	Young Easties Work Session (Rockhill)
June 28-29	FEBT	Rockhill Work Session
July 12	FEBT	Young Easties Work Session (Robertsdale)
July 12-13	FEBT	Rockhill Work Session
July 19	FEBT/BTACMHS	Robertsdale-Wood Heritage Day
July 26	EBT	Trackside Tastes & Tunes
August 2	FEBT	Young Easties Work Session (Rockhill)
August 2-3	FEBT	Rockhill Work Session
August 23-24	FEBT	Rockhill Work Session
August 30	EBT	Trackside Tastes & Tunes
September 13	FEBT	Young Easties Work Session (Rockhill)
September 13-14	FEBT	Rockhill Work Session
September 15-19	FEBT	Rockhill Fall Work Week
September 17-21	EBT	Ragtime at the Railroad
September 20	EBT	Trackside Tastes & Tunes
October 3, 4, 5	FEBT	2025 Fall Reunion
November 1	FEBT	Young Easties Work Session (Rockhill)
November 1-2	FEBT	Rockhill Work Session
November 28-30	EBT	Christmas in Coal Country
December 5-7, 12-14, 19-21	EBT	Christmas in Coal Country

<u>Hosts:</u>	FEBT	Friends of the East Broad Top	www.febt.org
	EBT	East Broad Top Railroad	www.eastbroadtop.com
	RTM	Rockhill Trolley Museum	www.rockhilltrolley.org
	BTACMHS	Broad Top Area Coal Miners Historical Society	broadtopminersmuseum.com

UPCOMING ROCKHILL FURNACE VOLUNTEER SESSIONS

The next Rockhill Restoration Work Weekend will take place Saturday and Sunday, March 1 and 2. The remainder of the 2025 Rockhill Furnace Work Session schedule is now available. Please consider coming out for one or more of the sessions to help us continue to preserve and restore the East Broad Top. If you are interested in participating in the Rockhill Furnace volunteer sessions including track work, and are not on the current signup distribution, please contact Charlie Wootton, the Rockhill Furnace volunteer coordinator, at rhrestoration@febt.org. Visit our website at [Volunteer – Friends of the East Broad Top](#) for more information on all of our volunteer projects and how you can participate. If you have questions about volunteering, or have suggestions for our volunteer recruiting efforts, please email me at volunteer@febt.org. – *Dave Bulman*

FEBT MUSEUM SCHEDULE

Easter on The Rails April 12, 19 10:00 AM to 4:00 PM

The FEBT Museum will be open for the 2025 season on Saturdays beginning May 3, 2025.

Operating hours are 10:00 AM to 5:00 PM.



SAVE THE DATE!

FEBT and the Broad Top Area Coal Miners Museum will jointly host the Robertsdale-Wood Heritage Day of July 19, 2025. Stay tuned for more details from both organizations. –
Jane Clarke

Did you enjoy the 2024 Friends of the East Broad Top Reunion? Looking forward to seeing what has occurred over the upcoming year?

Join us for the 2025 FEBT Reunion on October 3rd, 4th and 5th.



Look forward to the registration and other announcements coming soon.

ABOUT THIS ORGANIZATION

Friends of the East Broad Top, Inc. (FEBT) is a 501(c)(3) nonprofit, historical, and educational society dedicated to the preservation, restoration, and interpretation of the East Broad Top Railroad National Historic Landmark in Huntingdon County, Pennsylvania. It was organized in 1983 and now boasts over 2,200 members. FEBT publishes an award-winning magazine, *Timber Transfer*, and a monthly e-newsletter, and operates a museum in Robertsdale PA, the EBT's southern terminus. See febt.org/ for more information.

ABOUT THIS NEWSLETTER

The Friends of the East Broad Top Newsletter is a monthly digital-only periodical. Started in 2020, it is intended to keep members and donors apprised of what the organization has done and will be doing. The FEBT Newsletter is distributed by email to the current list of members and donors, and is a privilege of contributing to the FEBT's cause of preserving, restoring, and interpreting the East Broad Top Railroad for current and future generations. The editor can be contacted at Newsletter@febt.org. Previous issues of the FEBT Newsletter may be found at febt.org/newsletter. Press time for information submitted is 8:00 PM Eastern time on the 25th of each month. Events occurring after the 25th, such as donations and memberships, will be considered part of the following month's information.