



A Christmas in Coal Country train crosses the long fill in the snow on December 15, 2024. – Bill Adams photo

IN THIS ISSUE:

Track Gang Reaches the 994 Grade Crossing	3
Reflections on a Successful 2024 at the FEBT Museum	5
FEBT Earns \$15,000 Grant for Oral Histories	7
Rockhill Furnace Restoration Year in Review	8
EBT Returns to Mount Union... For a Few Days in December	10
A Message from the EBT Foundation Regarding Project Naming Opportunities	11
Board Approves Contract for Saltillo Station Construction	12
Company Store Item of the Month	14
December Campaign-Supported Accomplishments	15
December Fundraising Update	16
December Volunteers	17
Odds and Ends	17
Upcoming Events	18
Upcoming Rockhill Furnace Volunteer Sessions	18
FEBT Museum Schedule	18



Archivist Julie Fether Rockwell and Coal Miners Museum president Ron Morgan holding a Time and Delay Report at the Archives Open House in Mount Union on December 14, 2024. – Scarlett Wirt photo

TRACK GANG REACHES THE 994 GRADE CROSSING

Each year, as the month of November gives way to December, the sun makes its way further and further away in the southern sky. That means, of course, that the sun's rays are more indirect at this time of year, ushering in colder temperatures. During this reporting period, the work that the combined EBTF and FEBT track crews were able to accomplish slowed down a bit, in part due to the colder weather. We had three work sessions during this reporting period, during which 15 volunteers assisted. That said, it was a notable month.

We've Reached 994!

On December 3, we made a temporary connection to the existing rails in the PA Route 994 grade crossing, located just a bit north of the Southern Huntingdon High School. You might ask, "Why make a temporary connection to the existing rails, when the plan is to install new track in the crossing in the foreseeable future?" The answer is that this temporary connection will serve as a sort of template for the panel track which will go into the crossing. That panel track will be constructed before the crossing itself is opened up, making the replacement process much quicker.

Reaching this point means that the track gang gauged and spiked about 550 feet of track on the north side of the crossing.

Once the connection to the crossing had been made, we turned our attention to construction of about thirty feet of track on the south side of the crossing. There, too, a temporary connection was made. Fortunately, the railroad had on hand a supply of #100 RA rail so that construction of this track can proceed further south in the near future.



Above: On December 3, a cold track crew makes preparations to connect the main line rails to the rails in the Pogue Road crossing. – Gene Tucker photo

Left: December 3 also saw work begin on the south side of Pogue Road. – Dave Johnson photo

A Bit More Progress at the South End

We had high hopes of being able to finish opening up the usable track near the south end of the railroad, just a bit north of the village of Wood and south of Robertsdale, during a work party on Saturday, December 14. Our plan was to finish removing small trees and saplings, to clear the railhead and the flangeways of vegetation, and to install more crossies to

correct gauge. That “weather thing” we mentioned at the top of this article had other plans. The day of the planned work session turned out to be very cold, so we scrapped the idea of getting this work done. However, two of our enterprising and ambitious members, Larry Fuchs and Mike Wahler, stepped forward and got the small trees and saplings removed. Kudos, gents!

We will finish this work when the weather decides to cooperate. Without a doubt - and with Mother Nature’s cooperation - we’ll be able to get this work done before the season opens in the spring. That will allow several hundred more feet of track to be used by railbikes, handcars, and speeders. Once this work is done, it will also mark the southern limit to the track we will be able to make accessible. We will have reached the limit of what we can do, reaching a place about 50 yards north of the grade crossing in Wood.

Preparation for the Acquisition of a New Track Machine

On Tuesday, December 17, we constructed a short panel track in the Boney Pile behind the Trolley Museum shop complex. This short track is dual gauge (narrow and standard). It was prepared so that a Geismar tie inserter machine can be situated for work to convert it to narrow gauge. Its design makes it a good candidate for conversion. It is coming from the Walkersville Southern Railroad, located a short distance northeast of Frederick, Maryland.



The track crew assembles a dual gauge track panel to be used as a work platform for regauging the new tie inserter on December 17. – Gene Tucker photo

People: The Essential Ingredient for Success

Looking back over the accomplishments of this year, we can say that it’s been quite a productive season of track-laying. About 7,800 feet of main line track has been constructed in the seven-month period beginning in May of this year. To accomplish this, the railroad’s full-time staff members Henry Long (Foreman) and Galen Covert were assisted by a large cadre of FEBT personnel. At times during the middle of the week, FEBT could muster six to twelve crew members to advance the work. The same is also true of FEBT Work Weekends, and FEBT’s Work Weeks in May and September.

Currently, the FEBT track email list numbers about 85 persons. Our work crews (you might be interested to know) seem to fall into four general categories: 1. Those who work mainly during the week; 2. Those who work mainly on FEBT Work Weekends; 3. Those who work either midweek or on weekends, but only on occasion; and 4. Those who live at a long distance, who join us for FEBT Work Weeks or for other extended periods during the year.

No matter which category our volunteers fall into (and we should add that some fit into more than one), and no matter how much or how little time and effort each one is able to devote to the work, each and every person who shows up to help is a valuable part of the whole. Or, as I am fond of saying, “It’s all good!”

We’ve had a wonderful year in 2024. We look forward to a productive 2025. – Gene Tucker

REFLECTIONS ON A SUCCESSFUL 2024 AT THE FEBT MUSEUM

Wow, another year has gone by! I admit that there are times when I'm simply glad that we made it through, but then reality sets in. During 2024, the museum was open 35 days. Your volunteer hosts welcomed more than 697 guests to the museum this year. Those guests were very generous with their donations and purchases. Many of those guests were you, the members of FEBT. Thank you for visiting!

I know their names appear in the monthly-run list of volunteers, but I want to take a moment to thank those volunteers. For the fourth year; Roy Burnham, Jane Clarke, Julie Feather Rockwell (and third year that she has hosted "Archives Days" at the museum), Steve Jackson. Rick Rourke. For the third year; Doug Linebaugh, Bill Mosteller, Hans Plugge. For the second year; Greg Kifer, and librarian Don Barton Jr. New this year; Lance Gilliland, Charles High, Jonathan Morningstar, Kevin Nolish, Owen Smithmyer, Scarlett Wirt. These are the special folks who made those guests feel welcome and made sure that the guests left knowing more about the EBT than they did when they came in. You know the old saying about how many hands make light work. So, while that list of volunteers may look big, we can always use more.



Above: FEBT Museum hosts give mine tours like this one all tourist season. – Jane Clarke photo

Below: FEBT Museum hosts pose at RTM's Gingerbread Lane on their end-of-season reward trip on December 15. – Carl Salomon photo

Brad Esposito (EBT GM) often tells us that our efforts in Robertsdale may be the best public relations that the EBT has. The railbikes are bringing new people to the museum, and we are surprised at the number of them who look at us in shock when we tell them of a steam railroad ride that's available just a few miles away. Even more fun is when long-time locals come in and tell us the stories of their family history with the EBT. When it's quiet at the museum (no guests), it's true that sometimes we get out the mop and clean the floor, but most times one of the hosts asks a question and then we spend the next hour looking up something in all the books or checking the archives. The time spent by the hosts in Robertsdale is useful to our guests, useful to the EBT, and useful to the hosts.

Sunday, December 15 was a magical day on the railroad. Snow started falling shortly after noon. In spite of the weather concerns, eight of us gathered for our end-of-year "Thank You" event. We started with a



special trolley ride. A gift from the Rockhill Trolley Museum, they allowed our trolley to stop at the remains of the iron furnace. We looked at some pictures and timeline information that expanded upon the article that was in the winter issue of *Timber Transfer*. That was followed by a special tour of several of the shops buildings. The railroad then gifted us a ride on the train (still snowing, beautiful). A visit to the roundhouse, and then dinner at the Pizza Star (another gift to the hosts). Most years our Thank You event is a simple cookout at the museum, but the thing about being a host at the museum is that it's always good, and often a surprise.



I believe that I can speak for all those who have hosted and say, “Man it’s fun, and I never thought I’d learn so much about the EBT.” I hope you will consider joining in the fun in 2025 by becoming a volunteer host. Yes, we train you. No, you don’t have to be an expert on the EBT. In fact, it kind of works the other way: become a host because it’s the best way to learn more about the EBT. Also, you are always working with experienced hosts, so you will never feel alone or lost. All the hosts would be happy to welcome you to the group. Email me to let me know you are interested in joining the group of hosts. My email is simple, febt@aol.com. –
Pete Clarke

Above: The snow-covered remains of the Rockhill Iron Furnace, the initial purpose of Broad Top coal to be hauled down the mountain. – Jane Clarke photo



Left: Museum hosts Steve Jackson and Doug Linebaugh take in a trolley ride. – Jane Clarke photo

Below: A snowy view of the FEBT-restored Storehouse structure and adjacent buildings. – Jane Clarke photo



FEBT EARNS \$15,000 GRANT FOR ORAL HISTORIES

Dozens of recorded interviews and films about the history of the East Broad Top Railroad and the coal mines it served will be transcribed and digitized thanks to a \$15,000 grant announced this month by the Pennsylvania Historical and Museum Commission (PHMC). The grant was awarded to the Friends of the East Broad Top, partnering with the EBT Foundation and the Broad Top Area Coal Miners Historical Society. All three organizations are nonprofits.

The Friends of the East Broad Top conducted an oral history program from 1992 to 1998, and the Broad Top Area Coal Miners Historical Society from 1992 to 2006. These rare analog recordings, currently at risk of physical deterioration, are a top priority for digitization and transcription. Once digitized, they will be accessible to the public for the first time through the PA PowerLibrary's state digital collections portal, PA Photos and Documents. The unique oral histories and short documentary films capture experiences of mine workers and local railroaders, life in the EBT company towns, and EBT railfan excursions.

"This three-way collaboration facilitates a true 360-degree view of our industrial heritage," said EBT Historian and Curator Dr. R. Lee Rainey. "In the material that this project will preserve, we hear firsthand the authentic voices of the miners who dug the coal that filled the EBT railroad freight cars, of the trainmen who took the coal to market, and of the families who waited in the online towns and countryside each day for their workers' safe return."

Ron Morgan, president of the Robertsdale-based Coal Miners Museum, said, "The Broad Top Area Coal Miners Historical Society is pleased to partner with the FEBT and the EBT Foundation in the digitization of oral interviews with coal miners from the Broad Top area and to be a part of the ongoing East Broad Top Railroad restoration project. We are equally honored to remember and pay tribute to the people who mined the coal and operated the railroads. The story of King Coal on Broad Top is truly an exciting one."

The project is the first foray into digital preservation for the three partners, each of which has extensive archival holdings. The decisions made now will support expanding public access to their other archival materials in the future. The project will be directed by Scarlett Wirt, Friends of the East Broad Top Collections Custodian, and managed by Julie Rockwell, Archivist of the East Broad Top Railroad Archives and Special Collections, with assistance from Sammy Bellin, Archives Technician.



Rockhill Coal Company miners pose at the Mine No. 5 portal. The oral histories collection helps tell their stories. – EBT Archives photo, James Boyer collection

Funding includes hiring a 2025 summer intern from Juniata College, in nearby Huntingdon, PA; digital preservation and transcription services; and conserving and rehousing the analog materials. Volunteers from the Friends of the East Broad Top and the Broad Top Area Coal Miners Historical Society who have expertise in mining, railroading, and local place names will check the accuracy of the transcriptions.

The grant was made under the state commission's Historical and Archival Records Care program. The program's grants are awarded competitively and are intended to help preserve historically significant records held by local governments, historical records repositories, and academic institutions.

Among other programs, the 2,200-member Friends of the EBT operates a museum in Robertsdale, PA, where the Broad Top Area Coal Miners Museum is also located. The EBT Foundation operates the National Historic Landmark East Broad Top Railroad, headquartered in Rockhill Furnace, PA. – Julie Fether Rockwell

ROCKHILL FURNACE RESTORATION YEAR IN REVIEW

2024 was another great year for our restoration efforts in Rockhill Furnace. Over 140 individual volunteers participated in Rockhill work sessions, contributing over 4,600 volunteer hours. Excellent progress was made on building and equipment restoration, and volunteers enjoyed fun activities and new programs.

The north end of the Car Shop was completely rebuilt with all new doors, windows, and paint. Inside the Car Shop, the north end wood floor and two-foot gauge transfer track were both restored.



The Car Shop north end doors were begun in January and completed in May 2024. – Dave Bulman photos

The Storehouse 1 project was completed, with all historic material moved back into the engineer's cubby, and the lean-to hallway to the shop superintendent's office completed.



Above: The lean-to hallway to the superintendent's office in September after new wainscoting, trim, and paint. – Dave Bulman photo

Top right: The restored Storehouse's engineer's cubby awaiting hardware. – Dave Bulman photo

Right: The engineer's cubby with historic locomotive spare parts and material returned to the original locations. This material had been temporarily stored on the floor of the boiler shop. – Dave Bulman photo



The window crew installed another 35 restored sashes, including completion of all the roundhouse windows.

New roofs were installed on the Machine Shop and Car Shop by Covert Roofing, funded by the FEBT Campaign.



Left: The Glass Rattlers installing the final restored sash in the roundhouse. – Dave Bulman photo

Above: Freshly installed new roofs on the Machine Shop and Car Shop. – Al Gallo photo

Combine 14 moved closer to completion with exterior and interior painting, seat components finished, doors and steps installed, and EBTF starting the rebuilding of the trucks.



Combine 14 has come a long way from the beginning of the year (left) and the end of the September work week (right). – Dave Bulman photos

Boxcar 174 also is approaching completion with metal frame and sheet metal repairs completed, the doors rebuilt and rehung, trucks reinstalled, and the new wood flooring nearing completion.

The track crews worked out of Rockhill all year and made amazing progress on the March to Saltillo (see article on Page 3).

Boxcar 174 and crew after re-installation of the second sliding door. – Dave Bulman photo





Volunteer activities included lunches provided by RTM, cookouts, and after-dinner programs during the work weeks, and a train ride to the ice cream stand and the end of track.

This year also saw the successful launch of the Young Easties program for FEBT volunteers ages 13 to 17. Three YE sessions were held with a mix of educational, fun, and hands-on for the participants.

A big thanks to all of our dedicated volunteers and supporters who continue to make all of this possible. If you'd like to help restore the EBT in 2025, please come out and join us! Information on volunteering with us can be found at <https://febt.org/volunteer/>.

– Dave Bulman

Rockhill volunteers gather outside the paint shop during the May work week. – Dave Bulman photo.

EBT RETURNS TO MOUNT UNION... FOR A FEW DAYS IN DECEMBER

Beginning on Thanksgiving weekend, the storefront windows of the new archives building at 112 W. Shirley Street were lit up with a glittering fantasy snow globe featuring an O scale PRR train around the tree, and an EBT model engine from Santa.



The Christmas scene in the window of the archives building in Mount Union. – Matthew Malkiewicz photo

On December 14 and 15, the FEBT joined the Mount Union

community for the annual Festival of Wreaths and Trees, hosting an open house visited by 65 local community members. Visitors to the building learned about the EBT's Mount Union history from a joint exhibit presented by the EBT Archives and Special Collections and the Mount Union Area Historical Society. Railfans of all ages were delighted with the G scale model train layout featuring an EBT consist, designed and operated by the Bricktown Museum.

If you missed the open house, you can read more about it from the *Huntingdon Daily News* here: [EBT archives hosts open house | Local | huntingdondailynews.com](https://www.huntingdondailynews.com). With this auspicious start, who knows what 2025 will bring? – Scarlett Wirt

A MESSAGE FROM THE EBT FOUNDATION REGARDING PROJECT NAMING OPPORTUNITIES

The Friends and the EBT Foundation together have made substantial progress toward our dream of restoring the entire railroad, its shops and related facilities to operating condition. It will take years and very substantial resources to complete that mission.

Based on the success and hard work of so many, the Foundation believes now is the time to offer Friends members and others an additional opportunity to consider support for a variety of vital major projects. These projects will substantially accelerate the mission, help secure our future, and create a wonderful legacy for those who are able to participate.

Please know that we are grateful for EVERY gift no matter the size, and especially the support of the FEBT Campaign, but we would be remiss if we didn't make everyone aware of these important projects, their estimated costs, and the naming opportunities that come with them. These opportunities to directly support major Foundation projects will complement the ongoing and planned efforts funded by the FEBT annual Campaign.

The amounts shown vary between 50% and 100% of the estimated cost of the project. Gifts can be made over a four-year period following an initial gift of 20%. The naming opportunities are for a 20-year period, except in the case of the locomotive where it is for 15 years to match the FRA major inspection requirements.

The Three Springs Station and Saltillo Water Tank are two examples of structures which could bear your name once reconstructed. – EBT Archives photos



If you or someone you know might be interested, please contact EBT Foundation at development@eastbroadtop.com for further information.

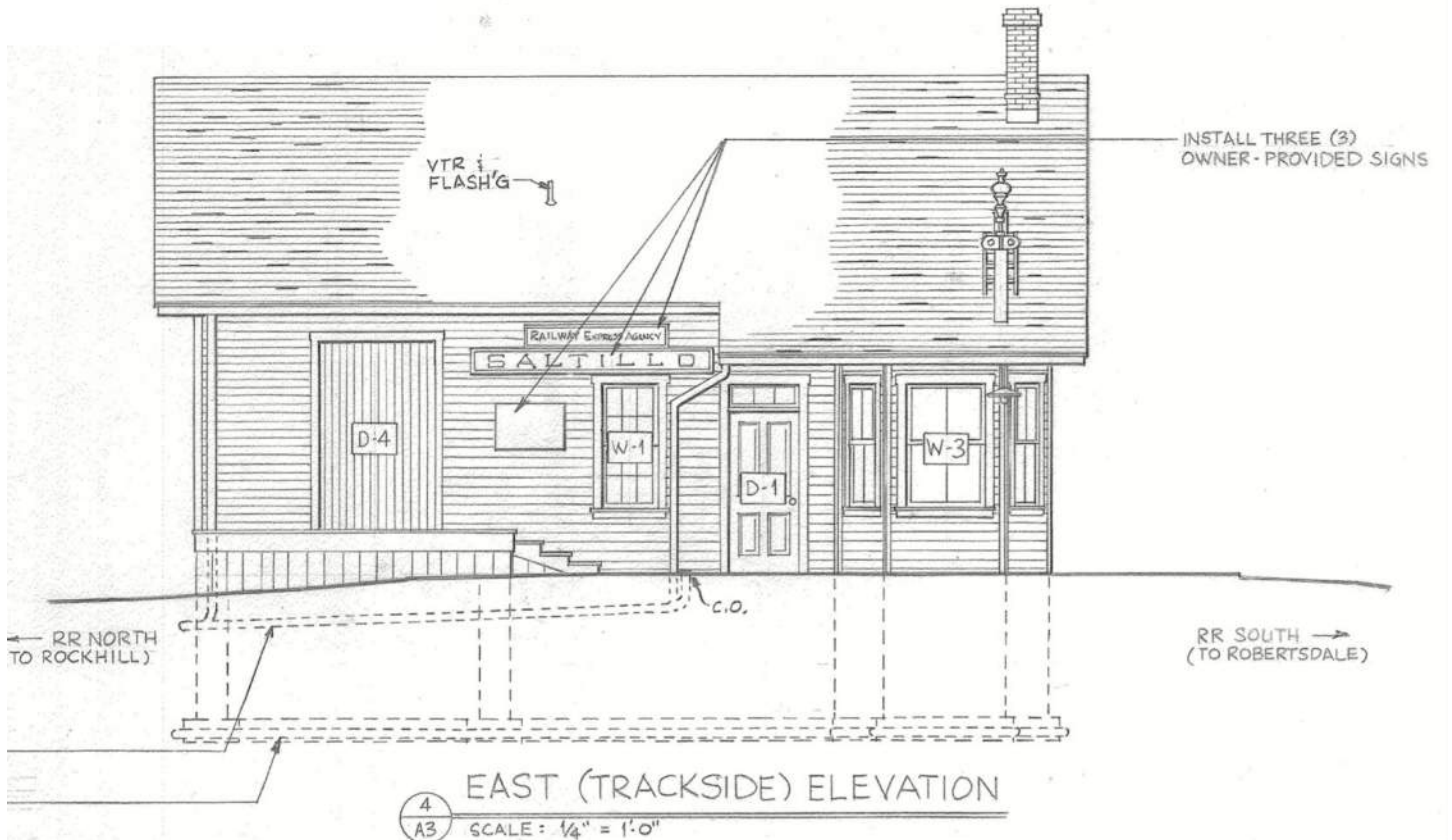
The projects are:

Restoration of Locomotive #15	\$500,000
Station in Three Springs for community use	\$350,000
Tank house in Saltillo	\$150,000
One mile of track	\$80,000
New Pavilion at Colgate Grove	\$25,000

The EBT Foundation is a 501(c)(3) organization. – *Pete Claussen*

BOARD APPROVES CONTRACT FOR SALTILLO STATION CONSTRUCTION

Groundbreaking for the new Saltillo station is expected this coming spring now that the FEBT Board has signed off on a contract with J.L. Swope Construction, Inc., of Quarryville, Pa.



The east (trackside) elevation drawing of the Saltillo station plans. – John Bowie rendering

The company comes highly recommended both for the quality of its work and for its willingness to undertake a project as unusual as this. It will require construction of a building that meets all modern code requirements while looking almost exactly like the plain, small-town station that the railroad put up in 1892 and modified in 1908-9 and again in 1913.

The FEBT Board voted to approve the contract and fund construction at its December 5 meeting. But the EBT Foundation, Inc., will be the actual signatory on the paperwork, since the new station will be on foundation property and will belong to the foundation. FEBT President Andy Van Scyoc and board members Dave Bulman and Lawrence Biemiller have been closely involved in discussions about the station for the past two years, along with the EBT's general manager, Brad Esposito, and the director of engineering, James Roslund.



Andy Van Scyoc, James Roslund, and John Bowie discuss station details in April 2024. – Lawrence Biemiller photo

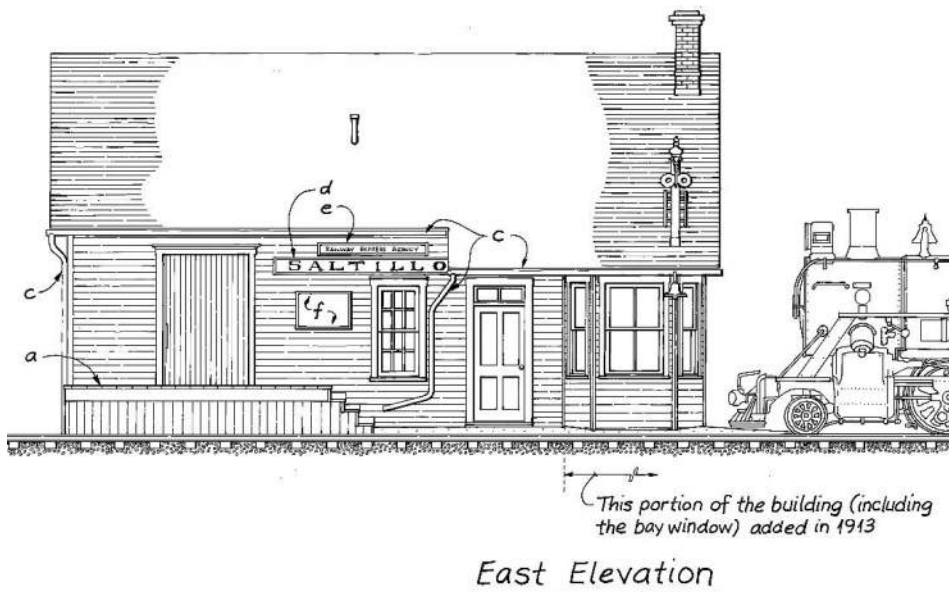
Construction will be paid for by donations to the FEBT’s annual campaign as well as bequest funds and a \$25,000 grant from the Narrow Gauge Preservation Foundation. The contract calls for Swope to finish and weather-seal the whole exterior of the station, leaving FEBT’s highly capable volunteers to complete the interior work. This will include reinstalling elements of the original station that were saved before it was demolished, such as the ticket window.

The new station has been designed by John Bowie, an architect and FEBT member with extensive historic-preservation experience. He has contributed many hours of labor to produce multiple iterations of drawings for the bidding process and for construction. Among earlier EBT-related projects, Bowie was involved with making drawings of both the original Saltillo station and the Coles tank for the Historic American Engineering Record. In his spare time, he’s also been interested in drawing the EBT’s bridges.

From the outside, the station will look so much like the original that rivet-counters will delight in finding the handful of differences, such as that doors will be slightly wider to meet Americans with Disabilities Act requirements. But Bowie’s construction drawings include instructions like “Slightly stagger the horizontal coursing of the siding” to imitate joints between older and newer sections of the original building, and “Install butt joints and stagger coursing (to resemble patches).”



John Bowie draws the original Saltillo ticket window during a May 2023 visit to the railroad. On the ground behind it are sections of the original tin molding. – Lawrence Biemiller photo



Inside there will be two significant differences.

The south -- railroad north -- end of the earlier building had a raised floor that allowed freight to be unloaded from EBT boxcars and then, at the same height, be loaded onto horse-drawn carts or trucks on the side opposite the tracks. Since the new building is far more likely to be accommodating people than freight, the whole of the interior will be on the level of the waiting room and the station agent’s office. There will, however, be a raised walkway just inside the track-side freight doors that will accommodate photo events. The freight door on the opposite side of the building will be false, visible on the exterior while inside there will be a plain wall.

John R. Bowie, A.I.A.; 2003-4

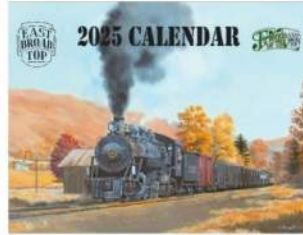
This is Bowie’s drawing of the original building’s East Elevation, made in 2003-4 and included in the Library of Congress’s Historic American Engineering Record. – Library of Congress rendering

The other major difference is that the restroom will be slightly larger, to meet ADA requirements, and its door will face south rather than west. The interior of the building will accommodate up to 49 visitors at once for exhibits, talks, meetings, and other functions. – Lawrence Biemiller

FEBT COMPANY STORE ITEM OF THE MONTH

Happy New Year

Limited Inventory
Don't Delay, Order Today!



While Supply Lasts

\$14.99

that's 25% off
Member Discount Applies

The 2025 East Broad Top Calendar, a joint effort between the Friends of the East Broad Top and the EBT Foundation, is now available! 2025's theme is "EBT Illustrations", highlighting the works of artists who have taken inspiration from our National Historic Landmark. Some of these images are being shared for the first time, others are available from each artist's respective websites. Each calendar features 12 unique images created by several different artists, including:

Jerry Anderson
Peter A. Lerro, Jr.

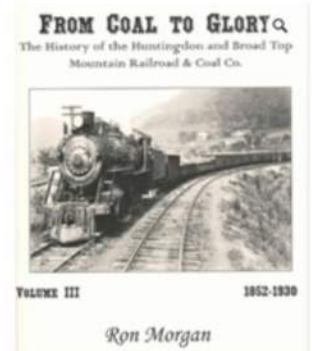
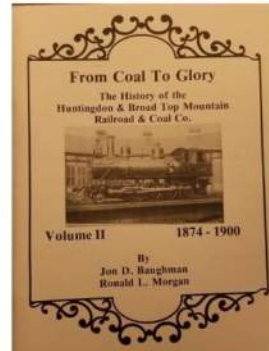
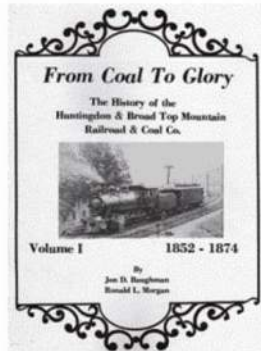
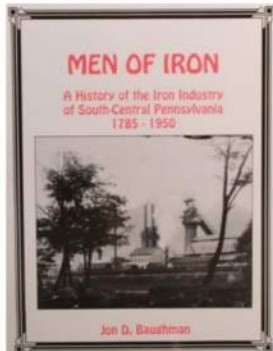
Gil Bennett
J. Craig Thorpe

Robert Frascella
David Tutwiler

In addition, two original art pieces featured in this calendar were discovered in the East Broad Top's vaults inside the Orbisonia Station. While each piece was signed by the original artist, the signatures were not legible, and no information about the creators were found.

Order on-line through the FEBT Company Store website at store.febt.org, using your account or create an account. PayPal, major credit cards, and personal checks payable to FEBT Company Store are accepted.

FEBT COMPANY STORE NEW, BACK IN STOCK AND COMING SOON



EBT Region Local History Books Back In Stock

Order on-line through the FEBT Company Store website at store.febt.org, using your account or create an account. PayPal, major credit cards, and personal checks payable to FEBT Company Store are accepted.

DECEMBER CAMPAIGN-SUPPORTED ACCOMPLISHMENTS

Progress continued on multiple projects in December supported by your donations to the FEBT Campaign. The combined FEBT volunteer and EBTF full time track crew continued the March to Saltillo, with track assembly continuing beyond the Rt. 994 crossing (see full article on Page 3). The Saltillo station project moved forward toward construction (see article on Page 12). The tender from locomotive No. 15 was separated from the engine on December 4 in preparation for shipment of the tank to Curry Rail Services. It will be used as a pattern for the new tank.



Also, a contract was approved to conduct an inspection and assessment of the Robertsdale Enginehouse foundation. This inspection will help us determine the next steps required to reconstruct this building.

Above: The March to Saltillo continues on the south side of the Rt. 994 crossing. – Al Gallo photo.

Below: Newly released picture of engine on the Rockhill coal tipple. – EBT Archives photo., Peter Barney Collection

The Archives team had a very busy December. A \$15,000 grant received from the Pennsylvania Historical and Museum Commission will allow dozens of interviews and films about the history of the EBT and the coal mines that the FEBT recorded in the 1990's to be transcribed and digitized (see article on Page 6). Images from the Peter Barney Photograph Collection, a recent donation to the Friends of the East Broad Top, were released to the public. These feature images of the famed "M-2," the Three Springs Station, and an EBT engine on top of the coaling tipple in Rockhill Furnace. In addition, EBT Board of Directors' Minutes, Volume 9, with an index created by Vagel Keller, was released, along with the original drafting linen for EBT's Engine #1 boiler rebuild,



1905 donated by the Reading Company Technical & Historical Society. The Archives also accepted a donation of negatives with unique, rare images of the EBT by Arnold Menke, and a donation of slides for scanning by Dave Johnson. Both collections will have selections available for public access in 2025. Finally, the Archives joined FEBT in welcoming visitors to the holiday-decorated, new building space owned by the EBT Foundation at 112 W. Shirley St., Mount Union, PA. – *Dave Bulman*

DECEMBER FUNDRAISING UPDATE

We are off to a great start on the 2025 Campaign thanks to our very generous donors. December donations totaled \$55,864 in 159 donations, bringing the 2025 Campaign total to \$170,256. FEBT appreciates your help to support its goals of restoring, preserving, and interpreting the East Broad Top Railroad. Thank you!

2025 Campaign Goal:
\$270,000

November Donations:
\$55,864

Campaign Total:
\$170,256 – 63.1%

December donors*:

- | | | | |
|---------------------------|-----------------------|-------------------------------|------------------------|
| Walter Albers | Richard Anderson | | |
| Jim Atkinson | Steven Avery | William M. Bailey | Frank T. Baker |
| Wayne Baldwin | John & Kathy Bates | Suneil Bedekar | Michele Beener |
| Vincent Bellafiore | Charles Berger | Lawrence Biemiller | Tim Bittner |
| Ralph R. Bitzer | Casper Bocklage | Kenneth Borg | Thomas Bowdler |
| Alexander Bowser | James A. Brehm | Sally Donner & Ken Briers | Allan Brown |
| David & Karen Bulman | | Robert G. Caccese | David H. Capp |
| Thomas W. Casey | David J. Chilcote | Albert Churella | Keith Clouse |
| Philip Coyle | Wallace Czekalski | Al DiCenso | Jeremy Diehl |
| David Dietz | Frank R. Dziama | Wade C. Eagleton | Dean Edmonds |
| Jay Eichler | Ronald Elliott | Linda Erdman | Lance Erickson |
| F A & Pamela Feltenberger | | Douglas E. Fink | Louis E. Fisher |
| David Foster | Richard Gauthier | Charles H. Geletzke Jr. | William B. George |
| Peter Gores | Donald D. Graab | Philip J. Grabowski | Sandy M. Grabowski |
| Daniel R. Green | Jeffrey Gumpert | Thomas Haag | Robert Hadsall |
| Geoffrey H. Hamway | Tom Hargis | Michael Hegedus | William R. Hessler |
| James Heuer | Charles W. High | John Scott Hiller | Lee Hodgson |
| David Homer | Robert H. Hungerford | Robert E. Jackson | Dave Johnson |
| Thomas Kelcec | Kenneth Michael Kelly | Steve Kelly | Victor V. Kidd |
| Chris Kingsley | Charles Klump | David C. Kneisley Sr. | John E. Kokas |
| Craig Kumler | John J. LePrince | George P. Lind | Philip Linne |
| Kevin Lynch | Marian Lynn | Steven MacFarlane | Douglas L. Mahrer |
| Robert M. Mandeville | Garret McCabe | Bruce McDowell | Sandra & Jessee Meeker |
| William Melville | Arnold Menke | Karl Miller | Ted Miskell |
| Gene Moser, Jr. | Roger Nutting | Mr. & Mrs. Stephen A. Olinick | Bruce Pencek |
| Jonathan Pulling, Jr. | John Raiser | Teresa J. Renner | Danny Rice |
| Michael Richardson | Edward Robinson | Tim Robinson | Ruth Rode |
| Mike & Robin Rotz | Gordon Rutherford | Bill Ryan | Anthony Sallo III |
| Chip & Leslie Savoye | Kevin Scanlon | Douglas Schleef | John W. Schmidt |
| Wesley Schmidt | Donald Schultz | James W. Seville | Jon Shade |
| Patrick Sheary | John Sheets | Robert Sher | Hilde & Tom Simco |
| Christophe Simone | Alan B. Sinclair | Richard K. Sisson | Thomas V. Sliviak |
| John Stapko | Jim Stapleton | Jeff Stone | David Syiek |
| Marlin R. Taylor | Robert Taylor | Mike Torreson | Vern Van Voorst |
| Richard E. Wachter | Gail Wall | William Ward | Tim Welch |
| Lee Wheeler | Jim Whipple | Wayne Wilder | Lawrence D. Williams |
| John H. Wilson | Richard Wisneski | Brian Wolfe | David Wood |
| Terrill L. Woolsey | John Zidik | James Zumbo | |

In memory of Lee Carlson:
Duane Mellor

In honor of Thomas Diehl:
Gretchen Diehl

In honor of Stephen Jackson:
The Jackson Family

* - All donors listed represent donations received between November 22, 2024 and December 21, 2024. Donations received after December 21 will be reported in the February 2025 issue due to press time constraints.

The 2025 Annual Campaign runs October 1, 2024 through September 30, 2025. The FEBT Fundraising Treasurer may be contacted at:

Karen Bulman
FEBT Fundraising Treasurer
P.O. Box 43063
Cincinnati, OH 45243

FEBT is a designated 501(c)(3) organization and donations are tax-deductible in the U.S.

Thank you for your generous support! – *Karen Bulman and Dave Bulman*

DECEMBER VOLUNTEERS

The following members volunteered in November in Rockhill Furnace, Robertsdale, and/or with the track crew, including the 2024 Reunion. Thanks to all FEBT volunteers for their dedicated efforts to preserve, restore, and interpret the EBT.

Stacey Batovsky	Lawrence Biemiller	Roy Burnham	Jane Clarke
Pete Clarke	Chris Connacher	Larry Fuchs	Al Gallo
Dave Hart	Charlie High	Brian Hoffman	Steve Jackson
Todd Johnson	Vagel Keller	Ed Kompare	Daniel Lane
Doug Linebaugh	Kevin Lynch	Margie McFalls	Ray McFalls
Joel Myers	Kevin Nolish	John Quinn	Mark Reese
Bill Reynolds	Rick Rourke	Justin Santichen	Blair Stewart
Deb Tucker	Gene Tucker	Mike Wahler	John Widmeyer
Brian Wolfe			

ODDS AND ENDS

Membership Dept.

I was asked recently how FEBT's membership numbers were doing. I thought that perhaps a review would be appropriate. On January 1, 2024, the membership count was 2,124. Since that time we have had 210 folks choose to not renew their memberships. We've had 56 former members re-join. We've had 252 new members join. So as of this date (December 24, 2024) membership stands at 2,222. That's 308 new or re-joining through the year. Close to, but not quite, one per day join or re-join. So yes, FEBT membership is still growing and keeping me very busy. – *Pete Clarke*

MEMBERSHIP BOX SCORE
The Friends of the East Broad Top
membership is up to
2222

RTM to Acquire Two PA Trolleys

The Rockhill Trolley Museum will acquire two trolleys to expand their collection. Both of these cars lived their operating lives in the Commonwealth of Pennsylvania, which helps add a regional flare to their collection. Read more about their unique idea to interpret trolley history at https://rockhilltrolley.org/wp-content/uploads/2024/11/press-release-to-acquire-new-cars_EK-JS-EK-28011.pdf. – *Doug Davenport*

Coal Miners Museum Excited About 2025 Plans, Oral History Grant

The Broad Top Area Coal Miners Historical Society held its annual reorganization meeting in December. You can read more about their plans at https://www.huntingdondailynews.com/news/local/coal-miners-society-reorganizes-for-year/article_d044a6ba-b8c6-11ef-b2c9-fbce1eba1044.html?fbclid=IwZXh0bgNhZW0CMTEAAR3RK3EiLqTyr0kl41VBTLvwt_u2ZKZMJBYoQcBIZXJ4IvgwXEnUFyvigv_aem_8N_3nv4B9NnEKc_gfXok-g. – *Doug Davenport*

UPCOMING EVENTS

Date	Host	Event
January 4, 5	FEBT	Rockhill Work Session
February 1-2	FEBT	Rockhill Work Session
March 1-2	FEBT	Rockhill Work Session
April 5-6	FEBT	Rockhill Work Session
April 12, 13, 19	EBT	Easter on the Rails
May 3	FEBT	FEBT Museum Opening Day 2025
May 3	BTACMHS	Broad Top Area Coal Miners Museum Opening Day 2025
May 3-4	FEBT	Rockhill Work Session
May 19-23	FEBT	Rockhill Spring Work Week
June 7-8	FEBT	Rockhill Work Session
June 28-29	FEBT	Rockhill Work Session
July 12-13	FEBT	Rockhill Work Session
August 2-3	FEBT	Rockhill Work Session
August 23-24	FEBT	Rockhill Work Session
September 13-14	FEBT	Rockhill Work Session
September 15-19	FEBT	Rockhill Fall Work Week
October 3, 4, 5	FEBT	2025 Fall Reunion
November 1-2	FEBT	Rockhill Work Session

<u>Hosts:</u>	FEBT	Friends of the East Broad Top	www.febt.org
	EBT	East Broad Top Railroad	www.eastbroadtop.com
	RTM	Rockhill Trolley Museum	www.rockhilltrolley.org
	BTACMHS	Broad Top Area Coal Miners Historical Society	broadtopminersmuseum.com

UPCOMING ROCKHILL FURNACE VOLUNTEER SESSIONS

The next Rockhill Restoration Work Weekend will take place Saturday and Sunday, January 4 and 5. The remainder of the 2025 Rockhill Furnace Work Session schedule is now available. Please consider coming out for one or more of the sessions to help us continue to preserve and restore the East Broad Top. If you are interested in participating in the Rockhill Furnace volunteer sessions including track work, and are not on the current signup distribution, please contact Charlie Wootton, the Rockhill Furnace volunteer coordinator, at rhrestoration@febt.org. Visit our website at [Volunteer – Friends of the East Broad Top](http://Volunteer-Friends of the East Broad Top) for more information on all of our volunteer projects and how you can participate. If you have questions about volunteering, or have suggestions for our volunteer recruiting efforts, please email me at volunteer@febt.org. – *Dave Bulman*

FEBT MUSEUM SCHEDULE

The FEBT Museum will be open for the 2025 season on Saturdays beginning May 3, 2025.

Operating hours are 10:00 AM to 5:00 PM.



Did you enjoy the 2024 Friends of the East Broad Top Reunion? Looking forward to seeing what has occurred over the upcoming year? Join us for the 2025 FEBT Reunion on October 3rd, 4th and 5th.



Look forward to the registration and other announcements coming soon.

ABOUT THIS ORGANIZATION

Friends of the East Broad Top, Inc. (FEBT) is a 501(c)(3) nonprofit, historical, and educational society dedicated to the preservation, restoration, and interpretation of the East Broad Top Railroad National Historic Landmark in Huntingdon County, Pennsylvania. It was organized in 1983 and now boasts over 2,200 members. FEBT publishes an award-winning magazine, *Timber Transfer*, and a monthly e-newsletter, and operates a museum in Robertsdale PA, the EBT's southern terminus. See febt.org/ for more information.

ABOUT THIS NEWSLETTER

The Friends of the East Broad Top Newsletter is a monthly digital-only periodical. Started in 2020, it is intended to keep members and donors apprised of what the organization has done and will be doing. The FEBT Newsletter is distributed by email to the current list of members and donors, and is a privilege of contributing to the FEBT's cause of preserving, restoring, and interpreting the East Broad Top Railroad for current and future generations. The editor can be contacted at Newsletter@febt.org. Previous issues of the FEBT Newsletter may be found at febt.org/newsletter. Press time for information submitted is 8:00 PM Eastern time on the 25th of each month. Events occurring after the 25th, such as donations and memberships, will be considered part of the following month's information.



Above: The 2024 restoration season closes out with track rebuilt and connected to both sides of the Pogue Road grade crossing near Southern Huntingdon HS. – Dave Camisa photo

Right: Snow covers the Rockhill Shops Complex in December. – Dave Bulman photo

