



www.febt.org

NEWSLETTER

Preservation Restoration Interpretation

Volume 5, Issue 5

May 2024



FEBT Track Crew members replace switch timbers in the Paint Shop lead track. – Gene Tucker photo

IN THIS ISSUE:

FEBT Pioneer Honored for Lifetime Achievement	3
FEBT Young Easties Volunteer Program Is About to Leave the Station!	4
Varied Tasks in Varied Places:	
The Track Gang's Work in April	5
April Notes from Robertsdale	7
Early April 2024 Rockhill Restoration Work Session	8
FEBT Volunteer Lodging Opportunity at Rockhill	9
Archives Technician Sammy Bellin Attends Conference at the National Archives	10
Grant to Archives Sponsors Disaster Preparedness Training for Local Museums	11
Vote for the EBT in <i>USA Today</i> Poll	12
Railroad Art Exhibits in Altoona	12
Company Store Item of the Month	13
FEBT Company Store New, Back in Stock, and Coming Soon	13
Plan Your Summer Trips to EBT Land	14
Juniata College Displays Their Support for EBT	15
April Volunteers	15
Coal Miners Museum to Open for 2024 Season	16
April Fundraising Update	17
FEBT 2024 Campaign Continues Great Response and Progress in April	18
Upcoming Events	21
Upcoming Rockhill Furnace Volunteer Sessions	21
FEBT Museum Schedule	21

FEBT PIONEER HONORED FOR LIFETIME ACHIEVEMENT

On April 23rd, the Huntingdon County Visitors Bureau held its annual Raystown Lake Region Tourism Summit. FEBT founding member Dr. R. Lee Rainey was honored with the Destination Excellence Award for Lifetime Achievement. Visitors Bureau Executive Director Matt Price described Rainey's enduring contributions this way:

Since 1968, this individual has been a steadfast champion of the unique character and history of the East Broad Top Railroad, a National Historic Landmark nestled in the heart of the Raystown Lake Region. Their meticulous research, prolific writing, and engaging speeches have served to illuminate the rich tapestry of this cherished institution.

But their contributions extend far beyond scholarly pursuits. In 2002, under their leadership, volunteer work sessions resumed in Rockhill, marking the beginning of a monumental effort to restore and interpret this national treasure. Over the years, these sessions have amassed an astonishing 45,000 hours* of volunteer labor, a testament to the unwavering dedication and passion of all involved.

Today, he serves as the founding Historian and Curator of the EBT Archives and Special Collections project, a joint initiative aimed at protecting, preserving, and providing access to the history, memory, and legacy of the East Broad Top Railroad. Through his leadership, this project has become a beacon of scholarship and preservation, ensuring that the story of the EBT lives on for future generations to discover and cherish.

This is the first time the Lifetime Achievement award has been presented, which, as Price described, "celebrates those rare individuals whose unwavering commitment and passion have shaped our region's identity and enriched the experiences of all who visit."

The Rockhill Trolley Museum also had two volunteers honored at the event. Ron Rabena and Valerie Robbins-Rice were honored as Raystown Lake Volunteers of the Year. – *Lawrence Biemiller & Doug Davenport*

* - Editor's note: Lee managed 45,000 volunteer hours between 2002 and 2018. FEBT has now exceeded 60,000 hours since work sessions began in 2002.



Award winners (L-R): Michael Tome, Friends of Raystown Lake, Community Impact Award; Valerie Robbins-Rice & Ron Rabena, Rockhill Trolley Museum, Volunteer of the Year Award; Dr. R. Lee Rainey, Friends of the East Broad Top, Lifetime Achievement Award; Jennifer Brumbaugh, Lincoln Caverns & Whisper Rocks, Employee of the Year Award; Tom Yoder, Mayfest of Huntingdon, Event of the Year Award; and Sandy Kay Rickabaugh, Lighthouse Concessions & Catering, Manager of the Year Award. – Huntingdon County Visitors Bureau photo

FEBT YOUNG EASTIES VOLUNTEER PROGRAM IS ABOUT TO LEAVE THE STATION!

The inaugural FEBT Young Easties (note the new name) volunteer event will be held on Saturday June 15, 2024 from 9:00 am to 4:00 pm. This initial event will be limited to 12 youth participants ages 13 to 17 (18 if still in high school), and one optional adult family member each.

For our first event, we plan to start with an introduction to the EBT, followed by a tour of the roundhouse and shops, a train ride, a group lunch, and a hands-on project in the afternoon (tie installation in the Rockhill yard is our projected June activity).

To register for the event, download and print the Young Easties Registration & Medical Release Form from the FEBT website at <https://febt.org/youthform>. Complete the form, including signatures, and email a saved pdf, scan, or photo of the completed form to youthvol@febt.org by May 15th (be sure to provide all information required on the form). The first 12 completed forms received will be registered for the event and notified by email. Please bring a copy of your completed registration form to the event. Submissions received after the event is full will also be notified by email. We are planning additional events, with the next one planned for late summer, so there will be more opportunities after this first event.

The FEBT Young Easties Volunteer Program is for teenage railroad enthusiasts. The program is intended to foster an interest in railroads in general, and the East Broad Top in particular, and to encourage future FEBT volunteers and leaders. The program will create a safe and welcoming environment for every participant, and will allow them to have fun, work hard, learn safe working practices, and experience new things.

Young Easties program sessions will be one-day events, typically on a Saturday. Multiple sessions per year are planned. Program sessions will generally take place at the EBT Railroad facilities in Rockhill Furnace, PA. Program activities will be a mix of fun and educational content and hands-on projects.

Young Easties program activities will be separate from other FEBT volunteer activities, although they both may be occurring concurrently. Program participants will only be directed by designated FEBT Young Easties Program Leaders. The program will be fully compliant with PA youth regulations and all Program Leaders will have recognized PA youth clearances.

A current FEBT membership is required for all participants. This may be a student membership (\$30) or a family membership (\$45). Student membership scholarships may be available based on need. A parent is not required but is welcome to attend. One adult family member (grandparent, aunt, uncle, sibling) can attend in place of the parent with parental permission. Adult participation also requires FEBT membership. Completion of a Registration and Release Form by all participants and the parent/guardian will be required prior to participation.



A proof of the FEBT Young Easties t-shirt.

We look forward to seeing you next month! – *Dave Bulman*

VARIED TASKS IN VARIED PLACES: THE TRACK GANG'S WORK IN APRIL

Varied tasks in varied places would have to be the short description of FEBT's track forces for this reporting period. We tackled tie installation projects in the Rockhill yard, in the Robertsdale railbike track, in the Trolley Museum's passing siding, and on the main north of the Orbisonia station. We also assisted with the rebuilding of a private crossing on the main north of town. We helped with track surfacing, and with the extension of the two-foot tramway on the south side of the Car Shop.

Assistance from Friends from Far Away



We were delighted to have the presence and the work of four members of the Wiscasset, Waterville & Farmington two-foot gauge railway museum in Maine. These four members of the WW&F made their way to us for work on April 1 – 3. Alas, Mother Nature didn't put on her best behavior during their time with us, delivering three days of (almost) solid rain. That put a damper (no pun intended) on the plans for those three days. Despite the misadventures of the weather, we are grateful for the time and effort these four members of WW&F devoted to their time with us, and we look for another such occasion in the future, under better environmental conditions.

Have Ties, Will Install

In almost every situation where the condition of the track structure is concerned, it is the condition and presence of the cross-ties which demand a good deal of attention. Tie life is dependent on a number of factors, including the quality of the ties themselves (wood species, as one example), the condition of the ballast in which they are set, the amount of access to sunlight they are able to have, the nature of the traffic which passes over them, the ability to keep water out of the track structure (drainage and good ballast, e.g.), and so forth.

Tie replacement is perhaps one of the major occupations of most track forces. FEBT's track

gang assisted the railroad's full-time staff in the installation of over 50 ties in the Paint Shop lead in the Rockhill yard, in installing 34 ties in the north leg of the Rockhill wye, in installing 10 ties in the main line south of Robertsdale (to correct the gauge of the railbike line), and in the rebuilding of a private crossing near the new bed & breakfast, which is located north of town (a bit north of the ice cream stand.) Six additional ties were also installed north of the B & B.

In addition, during the week of April 15th, we assisted the Rockhill Trolley Museum in the installation of 34 ties in the two switches of their Altoff passing siding, repeating (as in recent years) a pattern of close cooperation with our companion organization.

Above: Spiking of newly-installed ties on the north leg of the Rockhill wye is underway on April 9th. Pictured (from left to right) are Steve Jackson, John Widmeyer, Al Gallo, Larry Fuchs, Van Cresswell, Henry Long (with the spiking gun) and Phil Coyle. – Gene Tucker photo

Right: Steve Jackson and Phil Coyle regulate ballast in the Rockhill Trolley Museum's Altoff Siding switch on April 17th. – John Quinn photo



Other Miscellaneous Tasks

In late March, we assisted the railroad's full-time personnel with surfacing of the main on the south approach to McMullen's Summit. Reconstruction of the two-foot tramway on the south side of the Car Shop also proceeded during a work session at the end of March.

Many Hands Make for Light Work

We have an active, valued and dedicated asset in our volunteers. During this reporting period, 33 members assisted our work. Of that number, nine assisted in our work in Robertsdale and 13 assisted with the Rockhill Trolley Museum work. (Some of these also assisted in our other efforts.)



The track Crew poses in the Company Square on April 12th, after installing ties in the main line to correct the track gauge for the railbikes. – Roy Burnham photo

We also welcomed five new members who joined us for the first time this month. We welcomed Keith Clouse, Kevin Scanlon, Tyler Grissinger, Stephen Ramirez and Jacob Anderson. Great to have you on board. – Gene Tucker

APRIL NOTES FROM ROBERTSDALE

By the time you read this, crews will have been at work in Robertsdale on at least seven days in the month of April. A new picture rail has been designed, made, and installed by Steve Jackson (with some brotherly help). Ever wonder what the initial 40 pound per yard rail used by the EBT looked like? Do you want to discuss the various track components? Do you know what a “Dutchman” is? Come on up, this picture rail is designed to explain track (from the ties up).

After Steve removed a tree that had fallen across the (actual) track, we discovered that the winter had not been kind to the track gauge. Gene Tucker and his merry men came up to fix that.

Sixteen hosts attended our host training session. Six of them were attending for the first time. New tours have been added. New improved tour guidebooks have been produced. Museum displays have been changed.



Charlie High, Doug Linebaugh, Pete Clarke, Kevin Nolish and Scarlett Wirt discuss museum procedures during host training on April 19th. – Jane Clarke photo.

Many years ago, an attempt was made to document the historic artifacts in Robertsdale. Alas, over time that information became lost. We are better at tracking things now (we have an archivist!), so we have done an inventory of all the historic items. This included tagging each, so we will be able to know what each item is (and where it is).

We have a dynamite (pun intended) tour of the mining area (improved since last year), but we are also aware that many guests forget to allocate enough time to be able to take that tour. So, this year we have broken the tour down into smaller,

bite-sized units. New this year, Doug Linebaugh led the charge to open up a path to let us add a tour of the wye area. Also new this year, Jane Clarke and Rick Rourke developed a short town tour to learn about and walk past some of the company houses. An added bonus of that tour is that it takes you to the miners museum.

Did I mention that we have new items at the gift shop? Did I mention that the gift shop carries just about every book ever written about the EBT? Did I mention a tour using the railbikes? Archives Days, a new archives display, access to the online archives. Library Days (May 18 is one) are posted on the schedule on Page 21.

Both the FEBT and the Broad Top Area Coal Miners Museums will be open every Saturday, starting with May 4th (That's this Saturday!) Why not come on up and see what's happening in Robertsdale? – *Pete Clarke*

EARLY APRIL 2024 ROCKHILL RESTORATION WORK SESSION REPORT

The early April Rockhill Restoration Work Session was held on Saturday and Sunday, April 6th and 7th. It was a typical early spring weekend in Rockhill with sunshine, clouds, and varying temperatures. There were 34 volunteers on Saturday and 20 on Sunday. Six individuals volunteered for the first time.

Work continued with several projects throughout the weekend. Work began to fabricate a stirrup step for one of the larger Combine 14 baggage doors. The seats took a step forward with the seat backs being covered with canvas in preparation for the addition of new rattan. Additionally, new window sashes continued to be fitted and paint preparation continued in the baggage section.



On Saturday, in an exclusive look behind the scenes, FEBT volunteers had the opportunity to see the line shafts running in the Car Shop for the first time since 1956! Prior to the weekend, work had been underway to align the shafts and pulleys while Saturday was used to fine tune belts and make other adjustments. FEBT volunteers marveled at the line shafts running and the wood planer coming to life.

Many FEBT volunteers also had their first glimpse inside the first floor of the second Storehouse on Saturday when the Combine 14 crew opened the doors to search for material to fabricate a stirrup step. The Storehouse crew seized the opportunity to further inspect the condition of the building to help aid in plans to stabilize and restore it in the future.

The Storehouse crew was busy placing some of the last of the inventory back into proper bins in the Storehouse and worked to clear out the temporary sorting area in the Engineer's Cubby. Following the completion and hanging of the final door frame, north end restoration of the Car Shop saw the first siding installed on the new northeast doors.

With the line shafts running in the Car Shop, Brad Esposito and Ryan Rimshaw have engaged the wood planer while Alex Cook monitors movement overhead. – Eric Knepp photo

The Track Crew worked both days to replace ties and set spikes in the Paint Shop lead (see article on Page 5). The window crew continued restoration work on a number of window sashes and, with warmer weather in the afternoons, were able to apply fresh white paint to Car Shop windows and trim.

The Rockhill Trolley Museum ensured volunteers were well fed by graciously offering a spaghetti lunch in their pavilion each day to FEBT volunteers for a donation. Both FEBT and RTM volunteers enjoyed the social time while also swapping some shop talk.

If you'd like to help with these and other projects to preserve and restore the EBT, please come and lend a hand! Send and email to volunteer@febt.org for more information. – *Eric Knepp*

FEBT VOLUNTEER LODGING OPPORTUNITY AT ROCKHILL

The Rockhill Trolley Museum has generously offered to make a portion of their bunkhouse caboose available for FEBT volunteer lodging. The caboose is located next to the RTM members building and has a total of eight bunk beds, four per end. The caboose is heated and air conditioned. Restroom and shower facilities are available in the RTM members building. Guests must provide their own bedding, towels, and toiletries. The mattresses are roughly the size of a twin bed. Guests are expected to leave the caboose in the same condition or better than they found it. Space is based on availability, with RTM volunteers having priority. Reservations are required to ensure availability. Bunks have typically been available during most recent work sessions.

To use the RTM facilities for lodging, FEBT volunteers must be a Rockhill Trolley Museum (Railways to Yesterday, Inc.) member for insurance purposes. Holding an Associate Membership (\$35/year) or Sustaining Membership (\$50/year) would allow lodging throughout the calendar year, pending availability. RTM membership information can be found at <https://rockhilltrolley.org/contribute/become-a-member/>.



To learn more about the partnership between FEBT and RTM, please see the article on pages 20-21 of the March 2024 FEBT Newsletter.

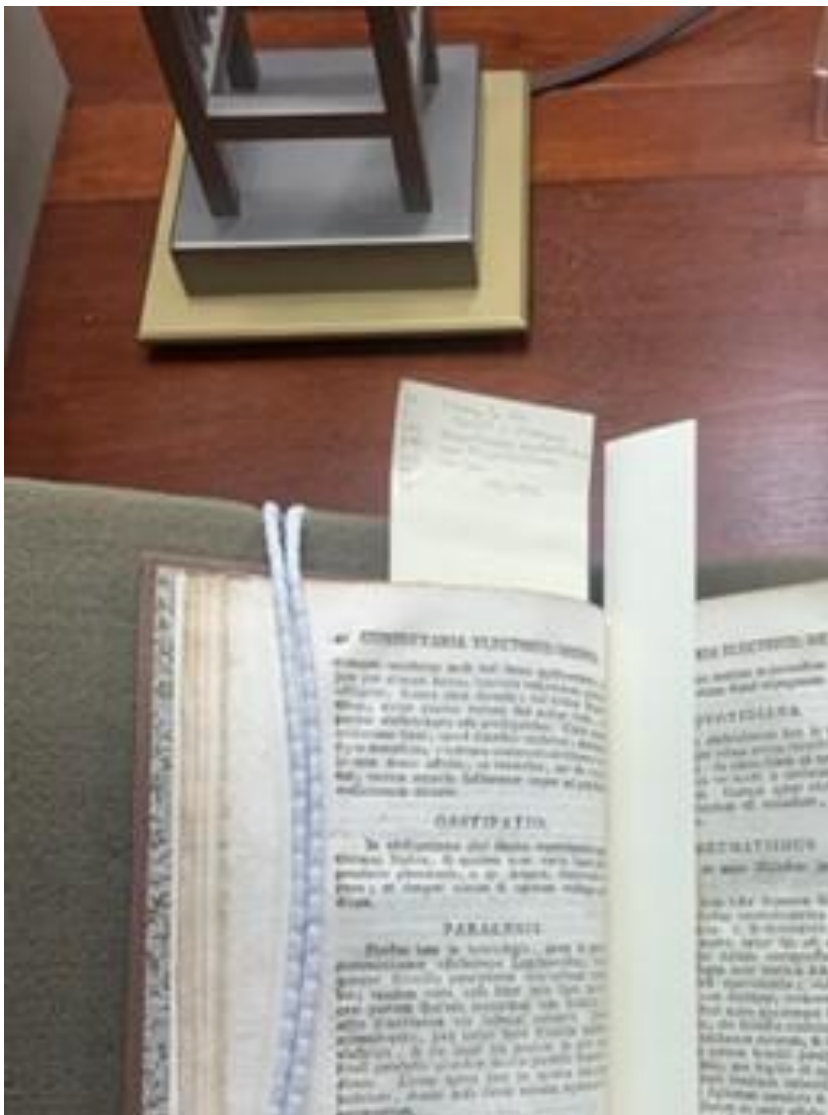
If you would like to learn more about using the RTM bunkhouse caboose, please contact Eric Knepp at bunkhouse@febt.org. – *Eric Knepp*

Inside and outside views of RTM's bunkhouse caboose. – Eric Knepp photos

ARCHIVES TECHNICIAN SAMMY BELLIN ATTENDS CONFERENCE AT THE NATIONAL ARCHIVES

Between April 9 - 12, I traveled to our nation's capital to attend "Archives 2024," a conference sponsored by the Society of Imaging Science and Technology (IS&T) held at the National Archives and Records Administration on the National Mall. As a new member of IS&T, my purpose in attending the conference was to network with other archives technicians who work in cultural heritage institutions and learn about new scanning technologies being used to manage large volumes of collections in various mediums of archival records and museum objects.

During this four-day conference, I took behind-the-scenes tours at both the Library of Congress' Preservation Research and Testing labs and at the Smithsonian Libraries and Archives, located in the Smithsonian Museum of Natural History. The conference itself featured presenters from around the world, with virtual speakers from Brazil, Finland, and the Netherlands. The topics were as diverse as the presenters, with fascinating discussions ranging from the creation of a hyperspectral database of synthetic historical inks (created using historic recipes to remake different varieties of commonly found inks in historic documents) to the digital rescue of items from the Viking era using a 3D scanner to capture the Oseberg ship and the Urnes Stave Church, among others. During the conference, I put my burgeoning networking skills to use. I was honored to talk with Eliana Glicklich-Cohn, the senior manager of Real Estate and Sustainability at the Museum of Modern Art, about sustainability techniques for small cultural heritage institutions. I also discussed imaging techniques with specialists from universities across the country, as well as learning about possible upcoming grants from the National Endowment for the Humanities.



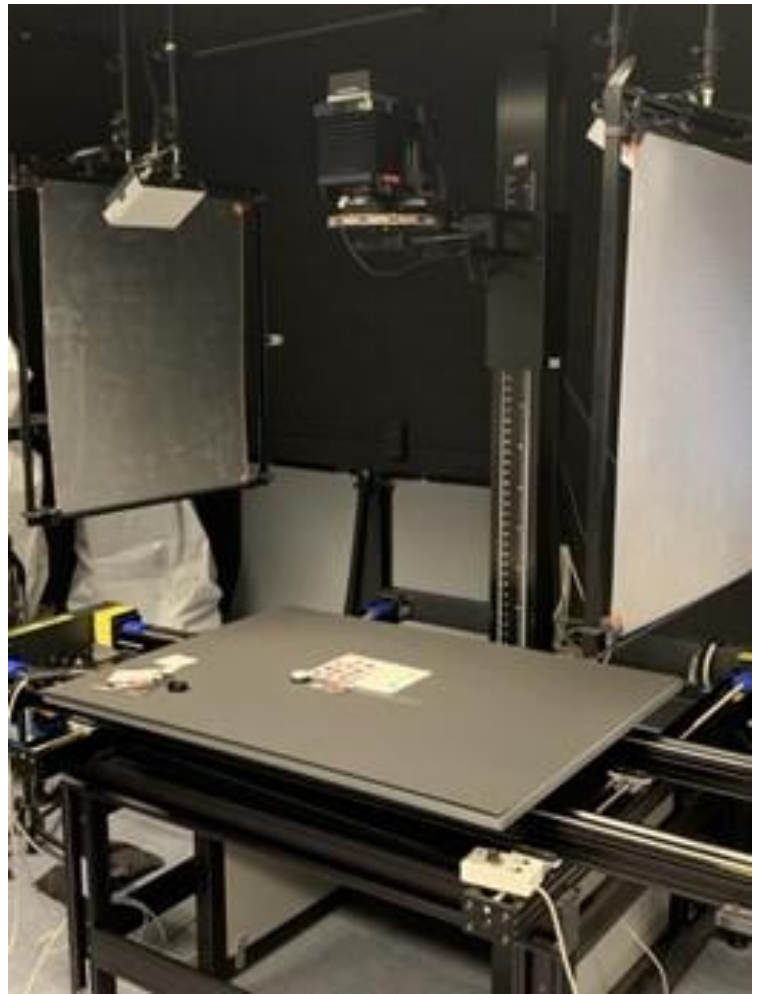
While at the conference, I was also afforded the opportunity to take two short courses. The first took place at the Library of Congress Preservation Research and Testing labs, where the instructors discussed non-invasive imaging and optical techniques. These involve the use of spectroscopy and spectral imaging, which utilize ultraviolet and infrared imaging to non-invasively explore historic records. One of the projects they had worked on was a handwritten draft of the Declaration of Independence, where a smudge was revealed to be a crossed-out word (Jefferson changed "fellow subjects" to "fellow citizens"). We watched Multispectral imaging demonstrations in their lab, which were both literally and figuratively illuminating! Although this technology may be out of our reach for the moment, I am sure that several EBTRR maps and drawings possess a wealth of knowledge that could be uncovered in a similar vein.

The next course discussed photogrammetry. This course explained that photogrammetry, simply put, is designed to capture a 2D image output from 3D images. The course instructors use photogrammetry to capture large, hard to scan pieces of art, such as the murals of Diego Rivera and petroglyphs. Photogrammetry involves

Viewing books in the Smithsonian Joseph Cullman III Library of Natural History was a rare experience I was able to take in. – Sammy Bellin photo

precise, overlapping captures of a record. The data is then fed into a software system, with an algorithm that uses the data to produce a high quality scan. This technique is not limited to flat (or mostly flat) records, and could be considered when the EBTRR Archives and Special Collections begins documenting objects in the collection!

Overall, I was overwhelmed with the support and kindness that the community offered to me. Everyone I met at the conference was helpful, polite, and intrigued by the work that is currently being done by the nascent EBTRR Archives and Special Collections, which is not even three years into its operation. While talking with other technicians, we discussed the importance of workflows for everything, from preparation of scanning items to uploading and reviewing digitized collections. Communication was emphasized throughout the conference, and I saw firsthand, through presentations and talking with people, how it prevented disaster and allowed for greater efficiency. We also discussed challenges those in our position face. These include the sheer scale of collections that cultural heritage institutions must attempt to digitize and preserve, as well as the challenge of long-term digital preservation and storage. Although these issues can seem insurmountable, it was a relief to hear other institutions share our same problems, and many times I was reminded that all archives, no matter how large or illustrious, started off in a similar position: overwhelmed, but excited. – *Sammy Bellin*



Multispectral Imaging instrument, used by the Preservation Testing and Research Division, Library of Congress. – Sammy Bellin photo

GRANT TO ARCHIVES SPONSORS DISASTER PREPAREDNESS TRAINING FOR LOCAL MUSEUMS

As was reported in the December 2023 FEBT Newsletter, the East Broad Top Railroad Archives & Special Collections Program was awarded a National Endowment for the Humanities (NEH) Preservation Assistance Grant for Smaller Institutions. This grant funding was put into action this month, as several Huntingdon County historical organizations gathered at the Bricktown Museum in Mount Union on April 22 for a Disaster Response and Recovery seminar. The event was run by the Conservation Center for Art and Historic Artifacts, and was the first of several trainings the grant money is providing to area museums. Additional sessions will occur in May, being held in Rockhill Furnace and in Three Springs. See the link below for more information from the *Huntingdon Daily News*. – *Doug Davenport*

https://www.huntingdondailynews.com/news/local/historians-learn-about-disaster-response/article_443db5a8-5fa3-5fb3-b755-565b1ea616c5.html



ABOUT THE NATIONAL ENDOWMENT FOR THE HUMANITIES
Created in 1965 as an independent federal agency, the National Endowment for the Humanities supports research and learning in history, literature, philosophy, and other areas of the humanities by funding selected, peer-reviewed proposals from around the nation. Additional information about the National Endowment for the Humanities and its grant programs is available at: www.neh.gov.

VOTE FOR THE EBT IN *USA TODAY* POLL



The East Broad Top Railroad is competing in the *USA Today* Reader's Choice Awards. Please cast your vote to help the EBT win the Best Scenic Train Ride category. Help the nation appreciate the beauty of the Aughwick Valley from the view of a narrow gauge coach. Vote online using the link below. Each person may vote up to once a day, with voting closing on May 12th. At the time of this writing, the EBT just out of the top spot, but your help can push the EBT up the ladder. – *Doug Davenport*

No. 16 and consist make their way through the S-curve. – Matthew Malkiewicz photo


[Vote for East Broad Top Railroad as 2024's Best Scenic Train Ride \(usatoday.com\)](https://www.usatoday.com/story/news/local/pennsylvania/2024/05/01/vote-east-broad-top-railroad-2024-best-scenic-train-ride/7248237002/)

RAILROAD ART EXHIBITS IN ALTOONA

PASSING FREIGHT by Stephen Mallon



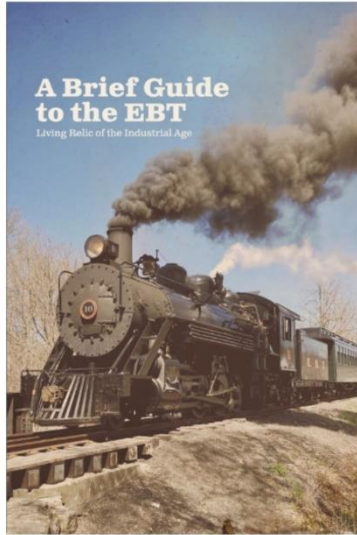
Two photographic exhibits related to railroading are now open at the Southern Alleghenies Museum of Art in Altoona, PA. *Passing Freight* features modern railroad photography by Stephen Mallon. *Contours: Land, Rail, Rau* contains 19th century Pennsylvania Railroad photos by William H. Rau, and is guest-curated by Julie Rockwell, the archivist of the

 SOUTHERN ALLEGHENIES MUSEUM OF ART Two Exhibitions • One Legacy
The Railroad's Past and Present in Photographs

CONTOURS LAND • RAIL • RAU

East Broad Top Archives & Special Collections program. These exhibits will be on display through July 7th, 2024. For more information, please visit [Altoona Exhibition Celebration | Sama \(sama-art.org\)](https://www.sama-art.org/). – *Doug Davenport*

COMPANY STORE ITEM OF THE MONTH



A Brief Guide to the EBT

Living Relic of the Industrial Age

Edited by Lawrence Biemiller, James H. Tuten, and Ryan Kough

This 115 page, 6x9 inch, softbound booklet is intended as an introduction to the EBT but the information, pictures and high quality layout make this booklet something every fan of the EBT should have!

"Visiting the East Broad Top Railroad? This guide explains everything from the route you'll ride and the whistle signals you'll hear to the history of this unique railroad, a living relic of the American Industrial Age."

A Brief Guide to the EBT is the result of a remarkable collaboration among Juniata College students and faculty members, the EBT Foundation, the Friends of the East Broad Top, and the East Broad Top Archives and Special Collections."

\$23.95 Member Discount Applies Shipping \$7.50

Order on-line through the FEBT Company Store website at store.febt.org, using your account or create an account. PayPal, major credit cards, and personal checks payable to FEBT Company Store are accepted. *Money orders cannot be accepted and will be returned to sender. Mail orders, regardless of payment method, are no longer accepted.*

FEBT COMPANY STORE NEW, BACK IN STOCK AND COMING SOON

HO Scale Mount Union Water Tank

The water tank at Mount Union was one of several that once stood along the EBT main line and branches. The tank was built in the early 1900's. Mount Union was the important connection to the Pennsylvania Railroad. Because there was a nearby connection to a standard gauge, this tank had dual gauge track in front of it.



The tank was heated with a small potbelly stove to keep it just warm enough to prevent the water for the steam locomotives from freezing during cold weather. The water supply was a cistern adjacent to the right side of the tank in an attached shed, and then was pumped up into the main tank.

The Mount Union Water Tank kit is the third in a series of models of EBT water tanks produced by Southern Heritage Models. The foundation, waterspout and other detail parts are unique resin parts designed just for this kit. The kit includes interior support and framing for those who wish to add interior details. This kit will make a great addition to your EBT layout!

\$89.95 Member Discount Applies Shipping \$10.00

Order on-line through the FEBT Company Store website at store.febt.org, using your account or create an account. PayPal, major credit cards, and personal checks payable to FEBT Company Store are accepted. *Money orders cannot be accepted and will be returned to sender. Mail orders, regardless of payment method, are no longer accepted.*

PLAN YOUR SUMMER TRIPS TO EBT LAND

Tourist season is upon us along the East Broad Top corridor in Huntingdon County, PA. As the calendar turns to May, many seasonal attractions in the area begin to open their doors for the year. For each organization's respective website, please see the Upcoming Events calendar on Page 16



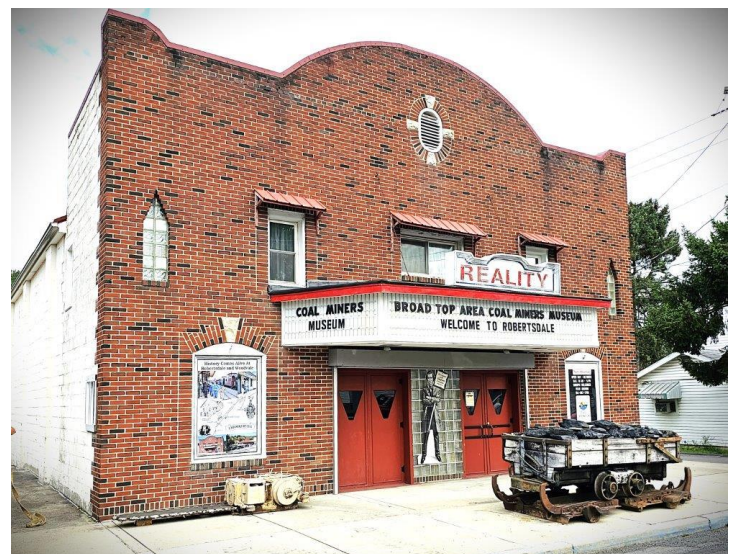
The East Broad Top Railroad begins operations on Friday, May 3rd. Diesel-powered excursions will depart Fridays, Saturdays, and Sundays at 11:00 AM, 1:00 PM, and 3:00 PM. For the heart of the summer, trains will run at those times on Wednesday through Sunday each week between Memorial Day and Labor Day.

The Rockhill Trolley Museum's 2024 season begins Friday, May 3rd. Trolley rides will be offered from 11:00 AM to 4:00 PM on Fridays, Saturdays, and Sundays from May through October. Between Memorial Day and Labor Day, the museum will also be operating Wednesdays and Thursdays.



The Friends of the East Broad Top Museum in Robertsdale opens Saturday, May 4th. The museum will be open Saturdays 10:00 AM to 5:00 PM through the end of October, with the noted exception of Saturday, October 5th (FEBT Reunion weekend, open Friday and Sunday instead). Walking tours of the operational areas of the company town are held at 11:00 AM, 1:00 PM, and 3:00 PM.

Also located in Robertsdale, the Broad Top Area Coal Miners Museum mirrors the Saturday schedule of the FEBT Museum. Come explore the history of coal mining and the miners who risked their lives to deliver the heating fuel from the mines. The museum is located in the Reality Theatre at 704 Main St. in Robertsdale.





The Bricktown Museum in Mount Union is open year-round, and is a great place to visit for local history. See a variety of displays about the industrial and railroading history of Mount Union, and take in their model railroad layout of the Pennsylvania Railroad and East Broad Top operations in their locale. While Bricktown does not have a website, they do run a Facebook page. The museum is open Saturdays 9:00 to 3:00 PM, and Tuesday and Thursday evenings 6:00-8:30 PM at 300 W. Small St. in Mount Union, PA.

– *Doug Davenport*

JUNIATA COLLEGE DISPLAYS THEIR SUPPORT FOR EBT

On Thursday, April 18th, Juniata College hosted a release party for the new *A Brief Guide to the EBT* guidebook. The guidebook project was a collaboration between FEBT and the college’s Juniata College Press. See the below link to an article on this project from the Spring 2024 edition of *Juniata Magazine*. Juniata College has also been the partnering school of the Archives program, providing the talent pool from which a summer intern has been selected each year to assist with the preservation of EBT documents and artifacts. – *Doug Davenport*

<https://www.juniata.edu/magazine/spring-2024/forging-a-unique-partnership.php>

APRIL VOLUNTEERS

The following members volunteered in April in Rockhill Furnace, Robertsdale, and/or with the track crew. Thanks to all FEBT volunteers for their dedicated efforts to preserve, restore, and interpret the EBT.

Bill Adams
Victor Booth
Jane Clarke
Craig Confair
Van Cresswell
Larry Fuchs
Stephen Gorell
Tom Hesketh
Steve Jackson
Michael Kelly
Conrad Meyer
Hans Plugge
Ryan Rimshaw
Gene Tucker
Connie Wolfe

Jacob Anderson
Dave Bulman
Pete Clarke
Jill Confair
Don Dusza
Al Gallo
Todd Grissinger
Charlie High
Dave Johnson
Eric Knepp
Joel Myers
John Quinn
Rick Rourke
Lamar Tyson
Terry Wolfe

Don Barton Jr.
Roy Burnham
Keith Clouso
Alex Cook
Dave Ebright
Lance Gilliland
Tyler Grissinger
Jim Hughes
Tom Jordan
Daniel Lane
Sam Painter
Stephen Ramirez
Kevin Scanlon
Mike Wahler
Charlie Wootton

Jerry Bertoldo
Dave Capp
Kevin Cogan
Phil Coyle
Jack Fornadley
Bobby Goldby
Dave Hart
Mr. Jackson
Daniel Kelly
Mathew Malkiewicz
Tom Perman
Mark Reese
Tim Schindele
John Widmeyer

MEMBERSHIP BOX SCORE

The Friends of the East Broad Top
membership is up to
2172

COAL MINERS MUSEUM TO OPEN FOR 2024 SEASON

The board of directors of the nonprofit Broad Top Area Coal Miners Historical Society is proud to announce the seasonal opening of the society's Coal Miners Museum located in the Reality Theatre, Robertsdale. Starting Saturday, May 4, the historical society will join forces with the nearby Friends of the East Broad Top 's (FEBT) Museum Complex, which will be opened on Saturdays during 2024.

The Coal Miners Museum and FEBT Museum will be open every Saturday until the end of the 2024 travel season in conjunction with the weekend activities of the East Broad Top Railroad and Rockhill Trolley Museum. The board members agreed to open the museum to the public between the hours of 10 a.m. to 4 p.m. each day, a similar schedule that will be adhered to by the FEBT.

Improvements have been concluded in and outside of the museum including the installation of a new movie projector which will permit the society to show movies on the Reality Theatre's large CinemaScope movie screen. Also, several new exhibits have been placed outside the entrance to the Reality Theatre.

In addition, announcements will be made later in the year about special events planned for this summer and fall.

With hopes of increasing museum attendance, the board of directors announced that group tours are welcomed throughout the year (other than holidays). Groups of 25 or more people are welcome to tour the museum at reduced rates. Contact the museum at 814-907-1788 for details.

As of this writing, society researchers Denny Fields and Carolyn Carroll have

completed improvements at the research library located on the top floor of the museum. Stay tuned for additional details.

The society members encourage families to submit information and photos about loved ones who worked in the Broad Top area coal mines and at the Somerset County, Pa. mines (GM&W Coal Co. operations). The information will be added to a compilation of coal miners of the Broad Top on display in the museum's downstairs exhibit area. The information will also be available in the research library.

Also, families wishing to add a miner's name to the plaques on display in the museum can do so by stopping by the museum or dialing 814-907-1788. The cost for placing names on the Miners Memorial Plaques is \$100 per miner.

The society will also be taking part in the annual Robertsdale Community & Heritage Days which dates scheduled for the weekend of Aug. 17-18. The planning for the event is in progress, with information to be announced later.

The Coal Miners Museum and the FEBT continue to be involved in cooperative activities including the co-sponsorship of a new advertisement appearing in the 2024 Huntingdon County Visitors Guide.



Larry Williams, a member of the Broad Top Area Coal Miners Historical Society, checks out a table of museum items in front of the former Reality Theatre in Robertsdale. – Ron Morgan photo

The public is reminded that the new “From Coal to Glory: The History of the Huntingdon & Broad Top Mountain Railroad” book can be purchased at the Coal Miners Museum and numerous other locations in Huntingdon and Bedford counties.

The cost of the book (including shipping and handling) is only \$23. Mail checks to the Broad Top Area Coal Miners Museum, Box 231, Robertsdale, Pa. 16674 (make check payable to the Broad Top Area Coal Miners Historical Society). A limited supply of the H&BT history, Volumes 1 and 2, can also be purchased. Make checks payable to Judy Baughman (same price) and mail to: Judy Baughman, Box 215, Dudley, Pa. 16634.

The society board members also remind the public that memberships in the society are available. The annual dues are: seniors and veterans, \$15; individuals, \$20; and families, \$30. Annual membership in the society permits unlimited free admission to the museum. Mail checks with information to the Coal Miners Museum. Please consider joining us. – *Ron Morgan*

APRIL FUNDRAISING UPDATE

Thank you for your continued support of the 2024 Campaign. April contributions totaled \$38,629 in 190 donations. This brings the 2024 Campaign total to \$266,277, or 121.0% of our goal! FEBT appreciates your help to support its goals of restoring, preserving, and interpreting the East Broad Top Railroad.

2024 Campaign Goal:
\$220,000
April Donations:
\$38,629.00
Campaign Total:
\$266,277.00 – 121.0%

April donors*:

David A. Ackerman	Richard Anderson	John J. Atherton	Herbert E. Baer
William M. Bailey	Mark Baker	Anastasia Batovsky	Timothy R. Beaty
Timothy Beauregard	Ralph Bitzer	Keith Blackall	Patrick Boab
Alexander Bowser	Joseph R. Brabec	Charles Bradley	David Bray
James A. Brehm	Kenneth Brink	Edward Byerly Brucker	David S. Bucher
Jeffrey Burridge	Ernest G. Buyok, Jr.	David H. Capp	Thomas Carlson
Paul M. Carpenito	Matthew Cesare	Norm Charbonneau	Steven M. Chorkawy
Keith Clouse	Gordon Q. Cochrane, Jr.	Marlin D. Diehl	Frank Couch
Bruce Courter	Jeffrey W. Damerst	Harry J. Downey	Thomas A. Diehl, Jr.
Clifford Dodge	Geoffrey Doughty	Larry Endler	Craig Dunn
Frank R. Dziama	Clifford Egel	Bernd Fanghanel	David Eskelund
Robert Etchberger	Andrew Evridge	Leland Floyd	Robert Farkas
David Ferguson	Douglas Fink	William Garrow	James E. Freeland
Ray Fritsch	Robert Fry	Peter Gores	Dean Gaugler
William B. George	Brian F. Gilleran	Daniel Harnish	Eugene Graber
Stephen Grado	William F. Graff, Jr.	Michael Hegedus	Charles Hawkins
Herbert Hays	Joseph R. Heffron	Charles W. High	Douglas Henry
William Hessler	James Hickey	Cliff Howell	John Scott Hiller
Michael & Melissa Holden	Victor Humphreys	Dave Johnson	James & Julie Hughes
David Hull	Kenneth Joseph	Robert Kaufman	Dennis Johnson
Tom Jordan	George R. Klair	Steve & Terri Klarich	Stephen Kelly
Victor V. Kidd	William Laird	Allen Landis	Douglas Kullman
Tim Lab	Ronald LeMay	Richard C. Lind	Lionel E. Lavoie
Kenneth F. Leiberher	Byron L. Locke	Robert W. Lykens	Jim Lipnitz
Dennis A. Livesey	Kenneth Willis & Sally	Mazzilli	Douglas Mahrer
Larry Maynard	Robert J. Meckes	William Melville	Chris McChesney
Thomas McMaster			William P. Meriwether

James G. Milheim	Laurence F. Miller	J. Harold Mohler	Andy Monich
Houston Morgan	Hugh Mose	Gene Moser, Jr.	Ronald J. Muldowney
Randy A. Musser	W. R. Newton	Peter Nicholas	Ray M. Oram
Thomas Parker	Ron Pearson	Merrill Perkins	Lewis Peterman
Richard Poletto	Brian Poole	Joe & Nancy Potts	Evan Price
Stephen Puzio	Michael J. Ray	Ronald W. Reckling	Dave Rchert
Charles S. Rhine	Allen Rider	James Robinson	Michael E. Romansky
Randy Ross	Norman R. Runk	Gordon Rutherford	Bill & Sue Sample
Russell Schmidt	Mark Schmitt	James W. Seville	David Shields, Jr.
Christopher Simone	Thomas V. Sliviak	Randy Smith	Carl Soechtig
Earle A. Stalfort, Jr.	William Stone	David Sutton	Peter Swan
David Syiek	Blair D. Tarr	Douglas C. Taylor	Robert Taylor
Daniel Thole	Daniel Thomas	Gary E. Thomas	Steven Thomas
Mike Torreson	Paul Trap	David Trussell	John & Cheryl Tumolo
Martin K. Van Horn	Victor Velelli	Connie Vinci	Richard E. Wachter
Mike & Barbara Wahler	Lee Wheeler	H. Robert Wallace	David Watts
Thomas Weyandt	Brian Wolfe	Alan Wilber	Sam W. Wilder
Jack Williams	Joseph R. Yakubisin	Connie & Terry Wolfe	Lynn Wolfe
Terrill L. Woolsey	James Zumbo	Patrick Yough	Donald Stuart Young

In honor of Gene “Friar Tuck” Tucker: Norman P. Gentieu Jr.
 In memory of Suzanne Gumpert: Jeffery Gumpert
 In memory of Jean Cialone: David S. Whitaker

* - All donors listed represent donations received between March 22, 2024 and April 21, 2024. Donations received after April 21 will be reported in the June 2024 issue due to press time constraints.

Thank you for your generous support! – *Karen Bulman and Dave Bulman*

FEBT 2024 CAMPAIGN CONTINUES GREAT RESPONSE AND PROGRESS IN APRIL

April was another fantastic month for the FEBT Campaign! Support for the campaign and the March to Saltillo resulted in the best April we’ve ever had. We are now approaching the 2023 campaign total with five months remaining in the campaign. We have received over 1000 donations for the first time in any campaign. Your contributions beyond the initial \$220,000 goal have already provided an additional \$46,000 to support the March to Saltillo. Your support also allowed excellent progress on multiple projects funded by the 2024 and prior campaigns.

New fixed metal chutes were fabricated for the Rockhill coal dock. These will be attached to the coal bunker openings and the moving outer chutes will be attached to them. These parts were funded by the 2022 Campaign.



Newly fabricated fixed chutes for the Rockhill coal dock. – Dave Bulman photo



The Saltillo Station Reconstruction moved forward with a project kickoff meeting with Architect and member John Bowie and EBTF and FEBT leadership. The meeting included an in-depth review of John's drawings and a review of project milestones. Next steps will include contractor quotes and evaluation.

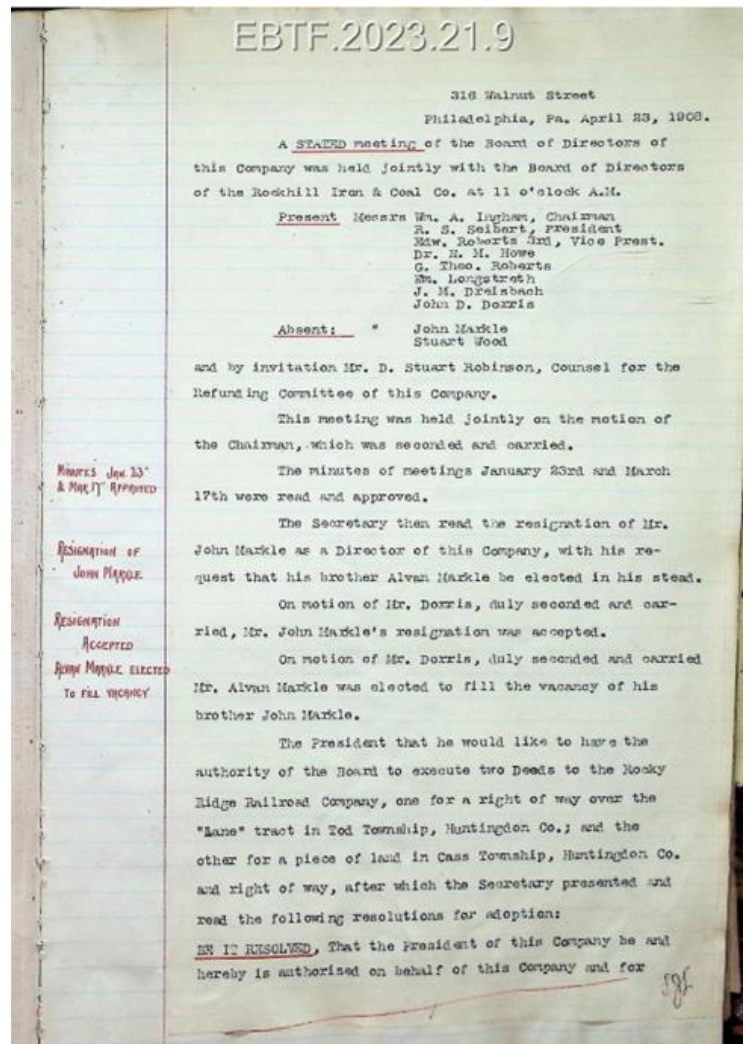
Left: EBTF and FEBT leadership meet in the EBT Board Room to review Saltillo Station plans. – Dave Bulman photo.

Below: Newly released EBT Board of Directors' Meeting Minutes - April 23, 1908. – EBT Archives Collection

The Archives team released the EBT & Coal Co. Board of Directors' and Stockholders' Minutes, Volume (No.) 4, 1908-1913, Accession No. EBTF.2023.21.09. This volume has 261 images scanned by Archives Technician Sammy Bellin, and includes a detailed page and subject index created by FEBT volunteer Vogel Keller. The latest releases can be found here:

<https://ebtarchives.catalogaccess.com/exhibits/23>. This work was funded by the FEBT 2024 Campaign.

The March to Saltillo continued to accumulate materials required for the track restoration south of Route 475. Approximately 3000 ties were delivered to the EBTF in March and April, all funded by the 2024 Campaign. With these deliveries, we have sufficient ties to go beyond the Rt. 994 crossing near the high school. Your April donations will provide spikes, plates, and ballast to go from Jordan Summit to near to the 994 crossing. We will need approximately \$70,000 more for all track materials to get to Pogue Station. And of course, there are still five more miles to go to get to Saltillo. With remaining 2024 Campaign donations targeted to the March to Saltillo, you can accelerate this effort with your continued support of the 2024 Campaign. The more we raise, the further we can go toward Saltillo.





A huge quantity of ties staged in the Rockhill Yard all funded by the FEBT Campaign to support the March to Saltillo. Dave Bulman photo.

The 2024 Campaign runs until Sept. 30, 2024. You may donate online (credit card and Paypal accepted) at the FEBT Company Store, <https://store.febt.org/donate>. If you prefer to send a check or money order payable to FEBT, address it to:

Karen Bulman
FEBT Fundraising Treasurer
P.O. Box 43063
Cincinnati, OH 45243

FEBT is a designated 501(c)(3) organization and donations are tax-deductible in the U.S.
– Karen and Dave Bulman



UPCOMING EVENTS

Date	Host	Event
May 11, 12	EBT	EBT Goes to War!
May 18, 19	FEBT	Rockhill Work Session
May 20-24	FEBT	Rockhill Spring Work Week
June 8	RTM	Johnstown Trolley Day
June 8	FEBT	Archives Day
June 15, 16	FEBT	Rockhill Work Session
June 15	FEBT	Youth Work Session
July 6, 7	FEBT	Rockhill Work Session
July 21	RTM	National Ice Cream Day
July 27, 28	FEBT	Rockhill Work Session
August 3	RTM	York Railways 163 Day
August 10	FEBT	Archives Day
August 17, 18	FEBT	Rockhill Work Session
August 17, 18	BTACMHS	Robertsdale Community Days
September 12, 13, 14, 15	EBT	Central Pennsylvania Ragtime & American Music Festival
September 14, 15	FEBT	Rockhill Work Session
September 16-20	FEBT	Rockhill Fall Work Week
October 4, 5, 6	FEBT	FEBT Fall Reunion
October 5	RTM	Fall Spectacular
October 12, 13, 19, 20, 26, 27	EBT	PEANUTS Great Pumpkin Patch Express
October 26, 27	FEBT	Rockhill Work Session
November 29, 30	EBT	Christmas in Coal Country
December 1, 6-8, 13-15, 20-22	EBT	Christmas in Coal Country

<u>Hosts:</u>	FEBT	Friends of the East Broad Top	www.feht.org
	EBT	East Broad Top Railroad	www.eastbroadtop.com
	RTM	Rockhill Trolley Museum	www.rockhilltrolley.org
	BTACMHS	Broad Top Area Coal Miners Historical Society	broadtopminersmuseum.com

UPCOMING ROCKHILL FURNACE VOLUNTEER SESSIONS

The next Rockhill volunteer session will take place Saturday and Sunday, May 18th and 19th. This will be followed directly by the Spring Work Week May 20th through May 24th. Please consider coming out for one or more of the sessions to help us continue to preserve and restore the East Broad Top. If you are interested in participating in the Rockhill Furnace volunteer sessions including track work, and are not on the current signup distribution, please contact Charlie Wootton, the Rockhill Furnace volunteer coordinator, at rhrestoration@febt.org.

If you have questions about volunteering, or have suggestions for our volunteer recruiting efforts, please email me at volunteer@febt.org. – Dave Bulman

FEBT MUSEUM SCHEDULE

Standard tourist season hours will begin on Saturday, May 4th. Operating hours will be Saturdays, 10:00 AM to 5:00 PM.

Archives Days: June 8, August 10

Library Days: May 18, June 15, July 20, August 17, September 21, October 4, October 19

ABOUT THIS ORGANIZATION



Friends of the East Broad Top, Inc. (FEBT) is a 501(c)(3) nonprofit, historical, and educational society dedicated to the preservation, restoration, and interpretation of the East Broad Top Railroad National Historic Landmark in Huntingdon County, Pennsylvania. It was organized in 1983 and now boasts over 2,100 members. FEBT publishes an award-winning magazine, *Timber Transfer*, and a monthly e-newsletter, and operates a museum in Robertsdale PA, the EBT's southern terminus. See febt.org/ for more information.

The Bricktown Museum's HO_n3 model of the Upper Aughwick crossing. – George Sarra photo

ABOUT THIS NEWSLETTER

The Friends of the East Broad Top Newsletter is a monthly digital-only periodical. Started in 2020, it is intended to keep members and donors apprised of what the organization has done and will be doing. The FEBT Newsletter is distributed by email to the current list of members and donors, and is a privilege of contributing to the FEBT's cause of preserving, restoring, and interpreting the East Broad Top Railroad for current and future generations. The editor can be contacted at Newsletter@febt.org. Previous issues of the FEBT Newsletter may be found at febt.org/newsletter. Press time for information submitted is 8:00 PM Eastern time on the 25th of each month. Events occurring after the 25th, such as donations and memberships, will be considered part of the following month's information.