



*Dave Ebright works on finishing touches in the passenger compartment of Combine 14.  
– Dave Bulman photo.*

## IN THIS ISSUE:

<b>Coming in Summer 2024: New Program for Youth</b>	<b>3</b>
<b>Rockhill Furnace January Work Weekend Wrap</b>	<b>3</b>
<b>EBTRR Archives and Special Collections:</b>	
<b>Accomplishments in 2023</b>	<b>6</b>
<b>January Volunteers</b>	<b>8</b>
<b>Company Store Item of the Month</b>	<b>9</b>
<b>FEBT Company Store New, Back in Stock, and Coming Soon</b>	<b>9</b>
<b>A Positive Outlook for Robertsdale in 2024</b>	<b>10</b>
<b>Join Our Neighbors at the Broad Top Area Coal Miners</b>	
<b>Museum</b>	<b>11</b>
<b>Coal Miners Museum Reorganizes for 2024</b>	<b>12</b>
<b>Makin' Tracks (Southward)</b>	<b>13</b>
<b>Upcoming Events</b>	<b>15</b>
<b>Upcoming Rockhill Furnace Volunteer Sessions</b>	<b>15</b>
<b>FEBT Museum Schedule</b>	<b>15</b>
<b>FEBT 2024 Campaign Continues Momentum</b>	<b>16</b>
<b>January Fundraising Update</b>	<b>17</b>

*While the winter weather during the January Work Session cancelled some FEBT activities, the Rockhill Trolley Museum took advantage of the snow to conduct operator training on its 1910 snow sweeper trolley, Car 107. – Shannon Turner photo*



## COMING IN SUMMER 2024: NEW PROGRAM FOR YOUTH

An opportunity for teenagers, ages 13 through 17, to learn about the East Broad Top Railroad, and to have an opportunity to do a hands-on restoration project, is being planned for summer and fall, 2024.

Initial plans envision a one-day event, offering an opportunity for young persons to take a ride on the railroad, to take a tour of its facilities and shops, and to engage in a restoration project (track work is being considered for the first offering, planned for mid-June). Lunch will be provided to participants.

The program's leaders will be members of FEBT, each of whom will hold clearances that are necessary for working with youth. Dates under consideration are Saturday, June 15<sup>th</sup> and Saturday, September 14<sup>th</sup> in Rockhill. As plans develop, and as the necessary reviews and approvals of those plans have been received, more information and an opportunity to sign up will be announced. – *Gene Tucker*

## ROCKHILL FURNACE JANUARY WORK WEEKEND WRAP

We had a good but wintery start to the 2024 FEBT Rockhill work sessions on Saturday January 6<sup>th</sup> and Sunday January 7<sup>th</sup>. A crew of 11 hearty volunteers braved the weekend snowfall to continue progress on multiple projects. Saturday started clear but the snow soon arrived, and we received over 6 inches before the day was done. This provided nice winter scenes around the yard and confined work to indoor projects (the Saturday track work was canceled).



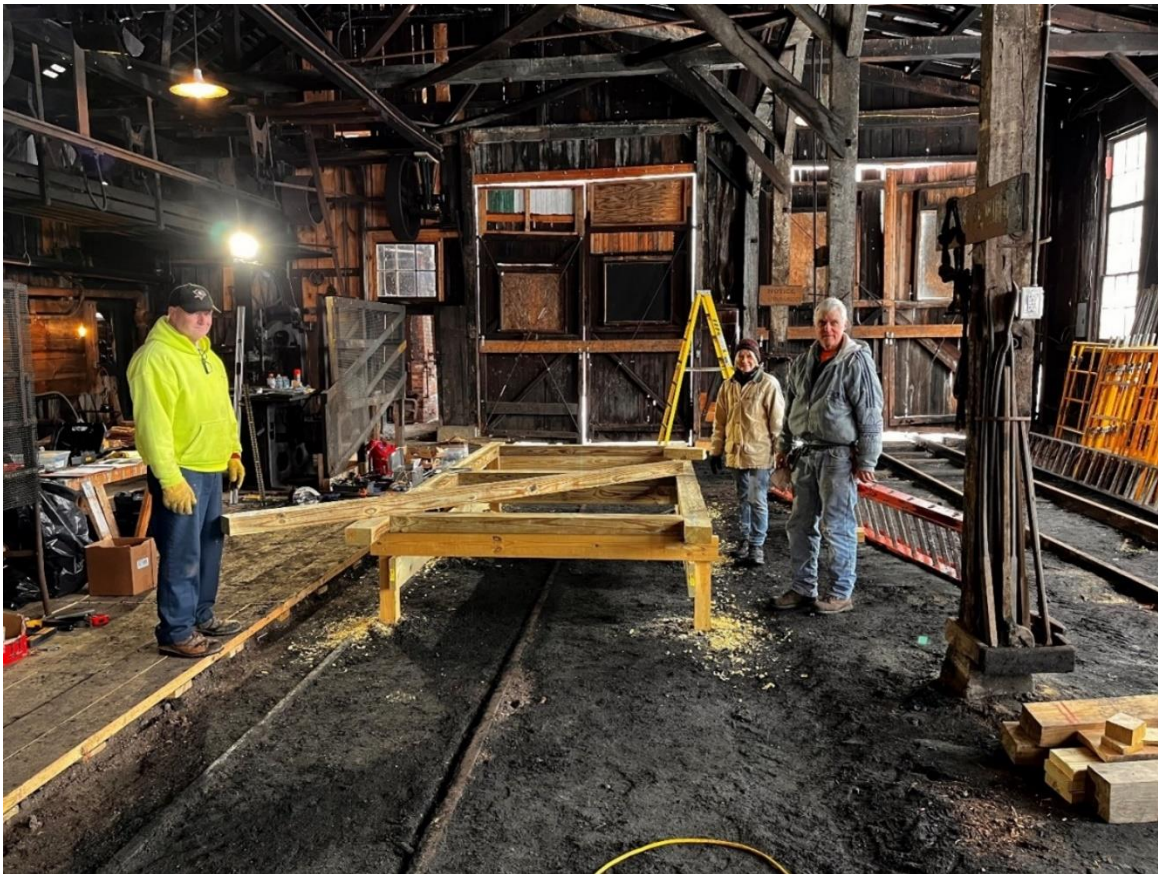
*A north-facing view from the Car Shop during the January work session. – Craig Confair photo*

In the Paint Shop, work continued on finishing the interior of Combine 14. Crews worked in both the baggage and passenger compartments of the car.



*Right: Mark Reese and Lamar Tyson work on final assembly of the baggage section of Combine 14. – Dave Bulman photo*  
*Below: Tom Perman, Jill Confair, and Craig Confair with the first new door frame for the north end of the Car Shop. – Dave Bulman photo*

In the Car Shop, the carpentry crew launched a new project to rebuild the north end of the Car Shop. This is similar to the work completed last year on the south end. During the weekend the door build fixture was created, and the first new shop door frame was completed.



Work also continued in the Storehouse lean-to, with two large shelves adjacent to the Stone House reconstructed, and more sorted hardware moved from the engineer's cubby back to original bins.

In the Carpentry Shop, work continued on window restoration.

Thanks also to the Rockhill Trolley Museum for providing hot lunches for a donation both days. – Dave Bulman



*Top: Two long shelves along the Stone House wall of the lean-to were reconstructed to their original design. Tom Perman is cleaning out original nail bins below the new shelves prior to restocking. – Dave Bulman photo  
Bottom: Bill Adams restores another window in the Carpentry Shop. – Dave Bulman photo*

# EBTRR ARCHIVES AND SPECIAL COLLECTIONS: ACCOMPLISHMENTS IN 2023

The East Broad Top Archives and Special Collections goals for 2023 were to continue laying a solid foundation for the program while enabling continued access to support operations and restoration, to enable limited research for EBT scholars, and to feature selected cataloged materials through a public-facing, online, digital catalog. This year, the Archives staff also participated in extensive national and community educational outreach events, and physically processed more collections. Accomplishments for 2023 are summarized below.

## Grants

- The Archives was awarded a National Endowment of the Humanities (NEH) Preservation Assistance Grant for Smaller Institutions of \$10,000.00 to support the 18-month project *Disaster Response Planning and Environmental Monitoring*.
- The FEBT received \$1,000.00 from the Van Horn Foundation earmarked to the Archives for archival preservation supplies.

## Personnel

- Julie Rockwell, EBT Archivist, continued to direct the program and oversee all activities.
- Sammy Bellin, Archives Technician, scanned over 3,000 archival materials and cataloged over 2,500 of these materials by item level.
- Connor Green, Archives Intern from Juniata College, worked on the 2022 National Railway Historical Society (NRHS) Heritage Grant project, *EBT Preservation of Architectural and Engineering Maps and Drawings*, inventorying over 2,000 maps and drawings and physically preserving and housing these materials for permanent storage.
- Lee Rainey, EBT Curator and Historian, and Scarlett Wirt, FEBT Collections Custodian, continued to support the archives as an integral part of program development, planning, and advocacy; and collections management that includes managing FEBT collections.
  - Rainey has created 1,696 meta-tags/search terms for the search engine that are available both internally and on the public access site (with some individual items receiving as many as 163 subject-matter tags). Rainey volunteered a total of 223.75 hours.
  - Wirt volunteered approximately 100 hours focused on policy development, FEBT collections management, and space planning.
- EBT Scholars Ron Pearson, Ric Case, and Vagel Keller, and FEBT member Roy Burnham volunteered a total of 106 hours towards the NRHS Heritage Grant project.
- FEBT member Walt Keely and his wife Carole volunteered 400 hours to the Baldwin Locomotive Drawings Project. Bellin scanned over 500 Baldwin locomotive drawings that the Keelys enhanced and created a cross-referencing database for the Foundation staff. These volunteer hours also satisfied the volunteers funding match for the NRHS Heritage Grant project.

**FEBT Volunteer Total Hours for the Archives: 847.75!**

## Access



*FEBT volunteer Vagel Keller, EBT Foundation Director of Sales and Marketing Jonathan Smith, EBT Foundation Station Operations Manager Andrew Greene, and Archives Technician Sammy Bellin review an oversize drawing, Map of Location for Douglas Branch, 1891.*

- The collections management system PastPerfect© Web Edition holds 3,346 catalog entries within 32 EBTF and FEBT accession records. There are 4,924 images recorded within the catalog entries.
- Public access through the online digital catalog: <https://ebtarchives.catalogaccess.com/>
- 3,157 catalog entries available to the public.
- 7,856 users.
- 20,223 subject searches.

### Donations

- A total of 50 donations were reviewed by the Collections Advisory Committee (Rockwell, Rainey, Wirt, Brad Esposito, Andy Van Scyoc) since entering custody of the Archives, 2021-2023.
- 43 donations approved and accessioned into EBTF or FEBT collections.

### Collections

#### **Preservation**

The following collections have been physically processed and housed for permanent storage:

- 6 linear feet of EBT Transit Company records [EBTF.2023.2].
- 8 linear feet of EBT Forms [EBTF.2022.5].
- 206 linear feet of rolled maps and drawings (estimate 2-12 items per square tube box depending on size, subject relation) [EBTF.2022.6, item-level and bulk series].
- 402 maps and drawings encapsulated in archival sleeves or mylar if needed and housed in acid-free folders [EBTF.2022.6].
- 8 linear feet of EBT Photographs [EBTF.2022.4], including bulk series slides and negatives.
- 2 linear feet of EBTF.2023.4 - EBTF.2023.19.
- FEBT.2022.2 Jack Alexander Collection (slides).
- All Baldwin locomotive drawings (est. 500) are secured in archival sleeves with oversize drawings encapsulated in mylar.
- Oversize flat files (broadside posters, other) are encapsulated in mylar and housed in acid-free folders [EBTF.2023.1]
- Bound volumes with extremely fragile and poor binding conditions wrapped in acid-free tissue paper and stored in archival document boxes.



*EBT Foundation board member Linn Moedinger, EBT Master Mechanic Dave Domitrovich, and FEBT volunteer Walt Keely discuss the Foundation's internal project to digitally index the Baldwin locomotive drawings. – Julie Rockwell photo*

### Presentations, Educational Outreach, and Community Engagement

#### **Public Presentations**

Pacific Northwest Railroad Archive - virtual (Rockwell)

*Heritage Rail Alliance* - in person “Strategic Archival Practices: Building for Success in Managing Railroad Archives” (Rockwell and Wirt)

Lexington Group for Transportation History panel - in person "Researching the History of Pennsylvania Railroads" (Rockwell)

Juniata College-HS-222 Archives: Theory, Practice, and Use - in person (Rockwell and Bellin)

### Educational Outreach and Community Engagement

- Winter Spectacular Archives Display
- Juniata College Career Day
- FEBT:
  - Museum Archives Days (5) with 114 total visitors
  - Reunion Archives Display
- Three Springs-Salttillo and Orby-Rockhill Homecoming Archives Displays
- Central Florida Railroad Museum - Archivist and Librarian 2-day visit
- Lexington Group for Transportation History Archives Display

– Julie Rockwell



*FEBT Robertsdale Museum docents Rick Rourke and Hans Plugge share Rockhill Iron and Coal Company drawings with a young visitor during an Archives Day. – Julie Rockwell photo*

## JANUARY VOLUNTEERS

The following members volunteered in December in Rockhill Furnace, Robertsdale, and/or with the track crew. Thanks to all FEBT volunteers for their dedicated efforts to preserve, restore, and interpret the EBT.

Bill Adams  
Craig Confair  
Dalton Cypher  
Ed Kompare  
Mark Reese  
Lamar Tyson  
John Widmeyer  
Andy Van Scyoc

Dave Bulman  
Jill Confair  
Dave Ebright  
Daniel Lane  
Ryan Rimshaw  
Mike Wahler  
Charlie Wootton

Jane Clarke  
Chris Connacher  
Al Gallo  
John Quinn  
Rick Rourke

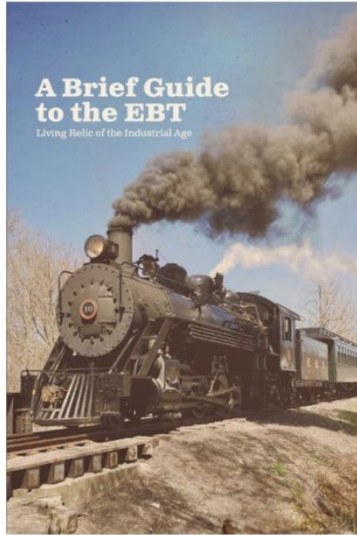
Pete Clarke  
Phil Coyle  
Steve Jackson  
Tom Perman  
Gene Tucker

### MEMBERSHIP BOX SCORE

The Friends of the East Broad Top  
membership is up to  
**2145**



# COMPANY STORE ITEM OF THE MONTH



## A Brief Guide to the EBT Living Relic of the Industrial Age

Edited by Lawrence Biemiller, James H. Tuten, and Ryan Kough

This 115 page, 6x9 inch, softbound booklet is intended as a introduction to the EBT but the information, pictures and high quality layout make this booklet something every fan of the EBT should have!

*"Visiting the East Broad Top Railroad? This guide explains everything from the route you'll ride and the whistle signals you'll hear to the history of this unique railroad, a living relic of the American Industrial Age."*

*A Brief Guide to the EBT is the result of a remarkable collaboration among Juniata College students and faculty members, the EBT Foundation, the Friends of the East Broad Top, and the East Broad Top Archives and Special Collections."*

**\$23.95    Member Discount Applies    Shipping \$7.50**

Order on-line through the FEBT Company Store website at [store.febt.org](http://store.febt.org), using your account or create an account. PayPal, major credit cards, and personal checks payable to FEBT Company Store are accepted. *Money orders cannot be accepted and will be returned to sender. Mail orders, regardless of payment method, are no longer accepted.*

# FEBT COMPANY STORE NEW, BACK IN STOCK AND COMING SOON



## HO Scale EBT Water Tanks

The water tank at Coles Station is the last surviving enclosed water tank of several that once stood along the EBT main line and branches, and was likely built around 1910. The tank was fed by a single cylinder gasoline

engine powering a vertical stroke pump via a flat belt. The water supply was a cistern adjacent to the rear of the tank, fed by pipe from a spring a few hundred feet toward Sideling Hill from the tank.

The foundation, waterspout and chimney are unique resin parts designed just for these kits. They include interior support and framing for those who wish to add interior details.



The water tank at Saltillo was one of several that once stood along the EBT main line and branches. The tank was built in the early 1900's. The tank was heated with a small potbelly stove to keep it just warm enough to prevent the water for steam

locomotives from freezing during cold weather. The water supply was a cistern adjacent to the right side of the tank, fed by pipe from a creek right by the tank.

**\$89.95 each**



**Now On Sale    \$10    While Supplies Last!**

This calendar features pictures of the East Broad Top railroad taken from 2020 through August 2023. They show images of the railroad's revival, including steam locomotive #16, brought back to service after 67 years. 11x17 inches, 12 month calendar.

# A POSITIVE OUTLOOK FOR ROBERTSDALE IN 2024

Ok, Editor Doug Davenport has asked that this issue be a look forward for 2024. Years of playing office football pools have taught me about my ability to predict the future. You might also think of this as my letter to Santa Claus. Add the success rate of those together and take this for what it's worth...

We plan to begin to remove some of the brush from the wye in Robertsdale. This will allow us to extend the walking tour up to the first bridge, which will enable guests to see the bridge, the runaway track, the end of the scale track, and the freight house track. Please read that carefully. I did not just write that Gerald Anderson and his crew and his machines will do tree removal. Nope, just a couple of volunteers with hand tools. But we do expect to make it possible to walk these tracks, which is not currently something that can be done.

We hope the hopper painting crew will return to finish the painting and do the lettering so that all three of the hoppers are completely done.

Up until now, we have offered one rather lengthy walking tour. We plan to add a variety of shorter walking tours that may be a better fit to our guests' schedules.

We look forward to having the railbikes in place for this coming year. That will enable more guests to get all the way to the end of track. Who knows, perhaps the end of track may move a bit further south. The bikes didn't get here until late in the year (and then needed some work), so this year we'll figure out the details of how the tours using them will work. Maybe we'll get turntables built so we don't have to pick them up and turn them around for the return trip.



*A January view of the Company Square. – Jane Clarke photo*

It sure would be nice to have rain gutters so that the nice new roof didn't send all the rain down directly centered onto the sidewalk/entry way. We are looking into getting that done.

Most of the plans for this year are for those boring little things that don't sound like much but that, once done, make your visit the museum that much nicer. A new Robertsdale station sign, add a picture rail to the museum, better shirt display rack that's more space efficient, better inventory shelving, improved desk for the archives PC, new (faster) PC for the point of sale system, improved PC for the archives PC, new/more ink-efficient printer, replace those ugly orange chairs, new cool stuff for sale, new displays of historic items. Will you see the start of some action on the enginehouse? There are some other items that may or may not get started this year but let's not promise them just yet. Archivist Julie Rockwell will again offer "Archives Day" at the museum. Don Barton will again be our librarian. Want to learn more about the EBT but can't bring yourself to pay the price for a copy of the Rainey & Kyper or the Heimburger books? Come read them, and just about every book, magazine, or newspaper article ever written about the EBT in the library.

If you are thinking that the paragraphs above didn't excite you and make you think you need to visit this year, go back and look again. New displays, new tours, more clearing, Archives Days, the library, railbikes – Wow, what a cool place to visit!

We already plan to be open on 33 days this year. That will grow as we learn of more special events.

My biggest hope for Robertsdale this year? I hope that you will decide that this is finally the year that you become one of the hosts. Training sessions are scheduled for Friday April 19 and Saturday April 20. Contact me (Pete) to sign up. After training, hosts always work as part of a crew, with 2 (or more) experienced hosts. We have a very detailed instruction manual that lives right there in front of you. Everyone you meet came there on purpose to see the museum, they are happy and happy to see you. Wish you knew more about the EBT? Ask the others who host – being a host is the best way to learn about the EBT. My hope for 2024 is that you email me right now! [febt@aol.com](mailto:febt@aol.com)

– Pete Clarke

## JOIN OUR NEIGHBORS AT THE BROAD TOP AREA COAL MINERS MUSEUM

Just up the street from the FEBT Museum in Robertsdale is another organization which we partner with frequently. The Broad Top Area Coal Miners Museum takes a different approach to some overlapping Broad Top coal field history. While our museum focuses on the means and methods by which the coal was hauled away to market, the Coal Miners Museum looks at the history of the coal mining towns of Robertsdale and Woodvale from the view of the miner. In fact, their museum includes artifacts and displays depicting the entire coal field, not just the portions of the EBT-served Rockhill Iron and Coal Company lands. Pick a Saturday from May to October and take in their museum. Immerse yourself in the experience of the coal miner over the century of deep mining up on Broad Top Mountain between the 1850s and the 1950s. Please consider supporting their outreach efforts and museum displays by joining the Broad Top Area Coal Miners Historical Society. For the low cost of \$20 per year, you can help enhance the experiences of miners shared at the museum. Membership provides free access to the museum, which normally has an entry fee of \$5 per visit. Please detach the below membership form and return it by mail to join the historical society at:

Broad Top Area Coal Miners Historical Society  
PO Box 321  
Robertsdale, PA 16674

FEBT has no better partner in Robertsdale than the Broad Top Area Coal Miners Historical Society, so please help them by joining for 2024. – Doug Davenport

### MEMBERSHIP INFORMATION-

-SUBMIT THIS MEMBERSHIP FORM ACCOMPANIED BY YOUR CHECK-

Name: \_\_\_\_\_ Address: \_\_\_\_\_

State: \_\_\_\_\_ Zip Code: \_\_\_\_\_ Phone No. \_\_\_\_\_ Email Address: \_\_\_\_\_

Individual: \$20 \_\_\_\_\_ Senior Citizen & Veterans: \$15 \_\_\_\_\_ Family: \$30 \_\_\_\_\_

Note that a membership in the Coal Miners Museum permits unlimited admission and other special events!

# COAL MINERS MUSEUM REORGANIZES FOR 2024

The Robertsdale-based Broad Top Area Coal Miners Historical Society welcomed a new board member and retained other society positions for 2024 during a reorganizational meeting held recently in the Coal Miners Museum. Elected to the board was Bill Hall of Newburg, a well-known area businessman, Todd Township Supervisor and community activist.

Hall told board members he was anxious to be a part of the historical society which preserves and promotes the history of coal mining and steam railroading on the tri-county Broad Top Coal Field. "I look forward to serving on the board and working closely with other board members in preserving our local history," said the new board member.

Also retained for another term on the board of directors were: Ron Morgan, Robertsdale, long time president and one of the founders of the nonprofit organization; Kirby Lockard, Robertsdale, vice president; Dennis Fields, Dudley, secretary; Allen Hess, Dudley, treasurer; Larry Williams, Saxton; Paul Wright Sr., Newburg, also a charter member of the organization; Gary Kuklo Sr., Riddlesburg; William Martin, Cooks; Adam Watson, Broad Top City; Larry Angelo, Dudley; Mary Gates, Dudley; Allen Swope, Huntingdon; Robert Watkins, Saxton; Jerry Wright, Wells Tannery; Carolyn Carroll, Fort Piper; Rick Rourke, Wood; and Gary Kuklo Jr., Cassville area.



*The Broad Top Area Coal Miners Museum in Robertsdale. – Ron Morgan photo*

The board also retained the Community State Bank (Saxton office), depository, and Huntingdon attorney Larry Newton, solicitor.

Treasurer Hess reviewed society activities, income and expenditures for 2023 reflecting a balance 2024 budget. Total fundraising, memberships, and donations projected for 2024 totals \$16,490, while projected expenses for the new year totals \$16,099, reflecting an operating surplus of \$391.

Some of the goals set for 2024 call for a major membership campaign and other creative fundraising activities to support a full agenda of projects for the new year.

All society members who have not yet paid their dues are encouraged to do so and consider signing up another member(s). Membership announcements were mailed out in early December along with the society's newsletter. A second dues announcement will be mailed out in the coming weeks, said Hess, adding that the society's goal for 2024 is at least 200 members. About half of the members have submitted their dues to date, he added.

In a review of the 2024 budget, the top four expenses are: electricity, telephone and Internet services, insurance and promotional activities including memberships in both the Bedford and Huntingdon counties visitors bureaus.

Please join the Broad Top Area Coal Miners Historical Society by mailing 2024 dues to the museum at Box 231, Robertsdale, Pa. 16674. Memberships are: Individual, \$20; Family, \$30; and Seniors/Veterans: \$15. Make checks payable to the above address.

The society will be involved in several museum projects this winter, including installation of overhead fans and other weatherization work in the former Reality Theatre.

The society will continue its involvement in a variety of area heritage projects including the EBT restoration and working closely with the EBT Foundation and the Friends of the EBT. Other organizations the society will be involved with include the Huntingdon County History & Heritage Roundtable, the Broad Top Area Heritage Partnership, and numerous history organizations in Huntingdon, Bedford and Fulton counties.

Society co-librarians Dennis Fields and Carolyn Carroll will continue their work on several library activities as well as ongoing research of coal miners who once worked in the Broad Top area coal field.

The society's board of directors will continue to hold their meetings the last Sunday of the month in the Coal Miners Museum, Robertsdale, starting at 1 p.m.

The society is also moving ahead with plans to reopen the museum for the 2024 season on Saturday, May 4, 10 a.m.-5 p.m. The museum will remain open on Saturdays (group tours are also welcome anytime) until Saturday, Oct. 28, 2024.

– Ron Morgan

## **MAKIN' TRACKS (SOUTHWARD)**

### Mother Nature's Varied Offerings in January

"Yes, there will be weather today." That statement gets bandied about among the track gang's workers from time-to-time. Of course, the question then arises: "What sort of weather will it be?" coupled to the next question, which is: "Will it allow us to work track?"

Looking back at our weather experiences in this first month of the new year, the answers to each of the three questions posed above would have to be: Statement: "Yes, there will be weather today"; Answer: "Yes, there was – most assuredly – weather today". Next Question: "What sort of weather was it?" Answer: "Some favorable, and some decidedly unfavorable". And the Last Question: "Did it allow us to work track?" Answer: "Yes, and no".

The weather in January can be dicey, and – in Rockhill – it was dicey this year. We had snowy and cold weather, but also mild weather and wet weather. The snowy weather prevented any track work during the January Work Weekend on Saturday, January 6<sup>th</sup>. However, the weather was mild during the middle of the week of January 1<sup>st</sup>, and again during the week of January 8<sup>th</sup>.

In spite of the unfavorable conditions that Mother Nature sent our way, we made the most of the milder conditions we encountered, and we managed to get a lot done in the process. Here are the details:

*The march southward:* Took major steps forward with the spiking up of about 725 feet of track. That's over 260 ties spiked up. In addition, tie installation and plating took place on another 200 feet of track, making this track ready for spiking, and bringing us to a point just a few hundred feet north of the PA Route 475 crossing. (The attached photo will show the proximity to the crossing.)

*The flooring project in the Car Shop:* On Tuesday, January 9<sup>th</sup>, heavy rain prompted us to move indoors into the Car Shop, where we installed a number of 6X6 pressure-treated floor joists as part of the project to rebuild the flooring.

### Welcome Additions to our Work Force in January

We are always delighted to welcome new members to the track gang. To that end, we celebrate the participation of new additions. In January: Chris Connacher joined us for the first time, while Dalton Cypher, who was home on leave, also was able to join us. Great to have both of these fine additions to the track community. Thanks, gents.

## Building Relationships, Strengthening Bonds



The focus of this article (and of each monthly newsletter's articles) is on the FEBT's role in building new track and in maintaining what is already in use. But we aren't alone in these efforts. The East Broad Top Foundation is an active – and governing – presence in all this work, as well. Consider, for example, the Foundation's work to clear vegetation from the right-of-way, and their work to underwrite the grading of the ROW so that track reconstruction can proceed. Those are just two of the ways that the Foundation is active in this work.

So, the Friends find themselves as active (junior) partners with the Foundation in the overall goal of Preserving, Restoring and Interpreting the East Broad Top Railroad so that this and future generations may be the beneficiaries. That overall goal, and its importance (to my mind, anyway), overrides any concerns or questions about who's doing what, and how much. We're in this great work together, and that's a very good thing. At this juncture in the railroad's life, being able to be involved (in any way or capacity) in the railroad's rebirth is a once-in-a-lifetime opportunity. Wow!

Our cooperation with other entities in Rockhill doesn't end there. This spring, as we've done for the past couple of years, FEBT's track personnel will assist the Rockhill Trolley Museum with tie work in their switches. We seek to strengthen and support a solid and mutually-beneficial relationship with the Museum, as we do with the Foundation.

Thank you, thank you, for your continued support, in whatever forms that is possible: Financial, continued interest, and active participation in our restoration efforts. – *Gene Tucker*

*Above: Track work has nearly reached the Maddensville Pike (PA-475) grade crossing with installing the remaining ties, as this picture is taken from the roadway pavement. – Gene Tucker photo*

*Right: FEBT President Andy Van Scyoc, EBT Foundation GM Brad Esposito, and EBT Foundation Director of Engineering James Roslund discuss the next steps to be taken during the January Work Session. – Dave Bulman photo*



## UPCOMING EVENTS

<b>Date</b>	<b>Host</b>	<b>Event</b>
February 3, 4	FEBT	Rockhill Work Session
March 2, 3	FEBT	Rockhill Work Session
March 23, 24, 30	EBT	Easter on the Rails
April 6, 7	FEBT	Rockhill Work Session
April 19, 20	FEBT	FEBT Museum Host Training
May 11, 12	EBT	EBT Goes to War!
May 18, 19	FEBT	Rockhill Work Session
May 20-24	FEBT	Rockhill Spring Work Week
June 15, 16	FEBT	Rockhill Work Session
July 6, 7	FEBT	Rockhill Work Session
July 27, 28	FEBT	Rockhill Work Session
August 17, 18	FEBT	Rockhill Work Session
September 14, 15	FEBT	Rockhill Work Session
September 16-20	FEBT	Rockhill Fall Work Week
October 4, 5, 6	FEBT	FEBT Fall Reunion
October 26, 27	FEBT	Rockhill Work Session

<u>Hosts:</u> FEBT	Friends of the East Broad Top	<a href="http://www.febt.org">www.febt.org</a>
EBT	East Broad Top Railroad	<a href="http://www.eastbroadtop.com">www.eastbroadtop.com</a>
RTM	Rockhill Trolley Museum	<a href="http://www.rockhilltrolley.org">www.rockhilltrolley.org</a>
BTACMHS	Broad Top Area Coal Miners Historical Society	<a href="http://broadtopminersmuseum.com">broadtopminersmuseum.com</a>

## UPCOMING ROCKHILL FURNACE VOLUNTEER SESSIONS

The next Rockhill volunteer session will take place Saturday and Sunday, February 3<sup>rd</sup> and 4<sup>th</sup>. Please consider coming out for one or more of the sessions to help us continue to preserve and restore the East Broad Top. If you are interested in participating in the Rockhill Furnace volunteer sessions including track work, and are not on the current signup distribution, please contact Charlie Wootton, the Rockhill Furnace volunteer coordinator, at [rhrestoration@febt.org](mailto:rhrestoration@febt.org).

If you have questions about volunteering, or have suggestions for our volunteer recruiting efforts, please email me at [dbulman115@gmail.com](mailto:dbulman115@gmail.com). – *Dave Bulman*

## FEBT MUSEUM SCHEDULE



The FEBT Museum will be open Saturdays during Easter on the Rails, March 23<sup>rd</sup> and March 30<sup>th</sup>, from 10:00 AM to 4:00 PM.

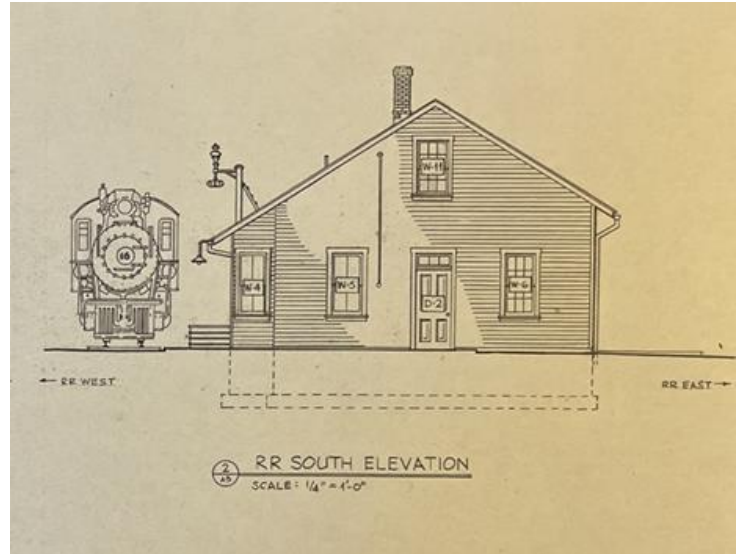
Training for museum hosts is scheduled for Friday April 19 and Saturday April 20. Contact Pete ([febt@aol.com](mailto:febt@aol.com)) to join the group of hosts.

Standard tourist season hours will begin on Saturday, May 4<sup>th</sup>. Operating hours will be Saturdays, 10:00 AM to 5:00 PM.

# FEBT 2024 CAMPAIGN CONTINUES MOMENTUM

The 2024 Campaign was launched on October 1<sup>st</sup> to rebuild the Saltillo Station, continue the March to Saltillo, begin efforts to rebuild the Robertsdale Enginehouse, fund the EBT Archives program, and build a new tender tank for Engine No. 15. Your donations, combined with the dedication of the FEBT volunteers and EBTF staff, have allowed significant progress since we launched the Campaign on October 1.

Architect and FEBT member John Bowie has continued to finalize detailed drawings of the Saltillo station. This will position us to begin construction efforts to rebuild the station once the 2024 Campaign goal is met.



*Saltillo Station elevation drawing. – John Bowie rendering*



*FEBT track crew installs ties on the mainline south of Rockhill approaching Rt. 475. – Gene Tucker photo*

The combined FEBT and EBTF track crew has installed over 600 additional ties south of the Odd Fellows Cemetery Road crossing. This has advanced the track work over 1100 feet, and it is now approaching the Route 475 crossing. We took delivery of the remainder of the 3000 ties we ordered in 2023, and FEBT authorized \$35,000 in December for additional spikes, tie plates, and ballast to install them. With these orders we will have sufficient materials available to allow track restoration to reach Jordan Summit. All of these materials have been funded by your support of the FEBT Campaigns.

The Archives team has continued to preserve and make accessible historic EBT materials through your support of the FEBT Campaign. The public site now has 3,157 available catalog entries, including recently added major photo collections from John Van Horn, Dave Johnson, Harold K. Vollrath, and Malcolm McCarter. Digitization of a large collection of John Krause photos, as well as historic locomotive inspection reports, board of directors' and stockholders' minutes, and Interstate Commerce Commission valuation field notebooks, is underway and will start appearing online in February. The FEBT's Alexander and Boutell collections, as well as numerous historic maps and drawings belonging to the Foundation, have been transferred to archival-quality, acid-free sleeves for long-term preservation, and environmental monitoring devices were installed in the Orbisonia depot and the Robertsdale museum. – Dave and Karen Bulman



*Sammy Bellin and Julie Rockwell scan a large drawing from the EBT archives collection. Matthew Malkiewicz photo.*



# JANUARY FUNDRAISING UPDATE

Thank you for your support of the 2024 Campaign. January contributions totaled \$28,836 in 86 donations. This brings the 2024 Campaign total to \$197,756 or 89.9% of our goal. FEBT appreciates your generosity in funding its goals of restoring, preserving, and interpreting the East Broad Top Railroad.

<p><b>2024 Campaign Goal:</b> \$220,000</p> <p><b>January Donations:</b> \$28,836.00</p> <p><b>Campaign Total:</b> \$197,756.00 – 89.9%</p>
---

January donors\*:

- |                     |                      |                           |                             |
|---------------------|----------------------|---------------------------|-----------------------------|
| Ronald Batory       | William Best         | Charles H. Bikle          | Lucas A. Bonagura, Jr.      |
| David L. Bowman     | Alexander Bowser     | John Brown                | Robert W. Brown             |
| David H. Capp       | Laurence Carbonetti  | Thomas W. Casey           | John J. Cipar               |
| Richard Conard      | Craig Confair        | Brandon Cornett           | William F. Cosgrove         |
| Jonathan Curry      | Linda Doyle          | Ernie Dusing              | Robert Eagan                |
| R.G. Edmonson       | Ronald Elliott       | Robert R. Farquharson, MD |                             |
| Douglas E. Fink     | Lance A. Gilliland   | Francis A. Goad           | Kenneth Gow                 |
| Donald D. Graab     | Stacie Grove         | Michael Hegedus           | Jeff Hickman                |
| Greta Hittle        | LeRoy Hogan          | Steven Hughes             | Victor Humphreys            |
| John Isaksen        | Dave Johnson         | John T. Keene             | Victor V. Kidd              |
| Keith A. Kreider    | Mark Lacari          | Don Lamb                  | William Larduskey           |
| Troy C. Litzel      | George P. Lind       | Mike Lucek                | Richard J. Magee            |
| Doug Mahrer         | Dan Marquardt        | Garret McCabe             | Arnold S. Menke             |
| Paul Mensing        | Robert Millinghausen | James R. Montgomery       | Peter Nicholas              |
| John Paternoster    | Robert Putman        | John Quinn                | Mary Beth and David Redding |
| Paul Reiss          | Jim Richardson       | James Robinson            | Christopher Roskosh         |
| Richard G. Rutledge | Bill Ryan            | Victor Ryerson            | Thomas E. Sadd              |
| Robert Savino       | Tom Sharratt         | Tom & Hilde Simco         | Brian Sipes                 |
| Jeffrey M. Slupski  | Roger Stier          | Victor Torgrimson         | John M. Van Scyoc           |
| Donald Way          | Ted Weidlein         | Alan Wilber               | Scarlett Wirt               |
| Brian Wolfe         | Eric Wunz            |                           |                             |

In Memory of Lee Carlson:  
Duane Mellor

\* - All donors listed represent donations received between December 22, 2023 and January 21, 2024. Donations received after January 21 will be reported in the March 2024 issue due to press time constraints.

Thank you for your generous support!! – *Karen Bulman and Dave Bulman*

## ABOUT THIS ORGANIZATION

Friends of the East Broad Top, Inc. (FEBT) is a 501(c)(3) nonprofit, historical, and educational society dedicated to the preservation, restoration, and interpretation of the East Broad Top Railroad National Historic Landmark in Huntingdon County, Pennsylvania. It was organized in 1983 and now boasts over 2,000 members. FEBT publishes an award-winning magazine, *Timber Transfer*, and a monthly e-newsletter, and operates a museum in Robertsdale PA, the EBT's southern terminus. See [febt.org/](http://febt.org/) for more information.



*The snowy January weather created an opportunity to work on the Car Shop floor replacement project. – Al Gallo photo*

## ABOUT THIS NEWSLETTER

The Friends of the East Broad Top Newsletter is a monthly digital-only periodical. Started in 2020, it is intended to keep members and donors apprised of what the organization has done and will be doing. The FEBT Newsletter is distributed by email to the current list of members and donors, and is a privilege of contributing to the FEBT's cause of preserving, restoring, and interpreting the East Broad Top Railroad for current and future generations. The editor can be contacted at [Newsletter@febt.org](mailto:Newsletter@febt.org). Previous issues of the FEBT Newsletter may be found at [febt.org/newsletter](http://febt.org/newsletter). Press time for information submitted is 8:00 PM Eastern time on the 25<sup>th</sup> of each month. Events occurring after the 25<sup>th</sup>, such as donations and memberships, will be considered part of the following month's information.