



www.febt.org

NEWSLETTER

Preservation Restoration Interpretation

Volume 4, Issue 11

November 2023



EBT's M-1 gas-electric unit poses over the Oddfellows Cemetery Road grade crossing during the FEBT Fall Reunion. The hard work of FEBT volunteers and FEBT's partnership with the EBT Foundation made the trip this far south possible for the first time in more than six decades. – Eric Knepp photo

IN THIS ISSUE:

FEBT 2024 Campaign Builds Steam with a Double-Your-Money Match	3
October Fundraising Update	4
Company Store Item of the Month	6
FEBT Company Store for East Broad Top Holiday Shopping	6
Robertsdale October Roundup	7
Track Report: Maintaining, Marching, and Adding	9
Join in Our Progress!	11
Upcoming Events	12
Holiday Events in Rockhill	13
Upcoming Rockhill Furnace Volunteer Sessions	14
FEBT Museum Schedule	14
EBT Well-Represented at MER Convention	15
Wants and Needs	16



1,200 ties arrived in Rockhill on October 24th. These will soon be installed in the main line as FEBT continues its March to Saltillo. – Brad Esposito photo

FEBT 2024 CAMPAIGN BUILDS STEAM WITH A DOUBLE-YOUR-MONEY MATCH

Matching Opportunity Begins Today!

We launched our 2024 Campaign on October 1. Now, thanks to a generous donor's offer, you can double the impact of any gift you make between November 1 and November 14. The donor, who wishes to remain anonymous, will match up to a total of \$15,000. But you'll need to act now!

The 2024 Campaign seeks to raise \$220,000 to support the following projects:

Saltillo Station – We plan to fund the exterior construction of the building, with FEBT volunteers to complete the interior work. We desire to raise \$50,000 in the 2024 campaign for this project.

March to Saltillo – We will purchase additional ties and material to continue the track restoration south toward Saltillo. We are seeking \$40,000 in the 2024 campaign to support this effort.

Robertsdale Engine House – We plan to launch initial architectural work to begin the effort to rebuild this long-lost building. We'd like to raise \$10,000 in the 2024 campaign to fund this effort.

Archives – With your financial support, we expect to add detailed surveys, descriptions, and hundreds of photos of the entire line, plus never-before-available corporate business records. We seek to raise \$70,000 in the 2024 campaign to enable this work.

Steam Locomotive 15 – The EBT Foundation plans number 15 to be the next engine restored to operation. The FEBT will support this effort by funding the construction of the needed new tender tank for the engine by raising \$50,000 in the 2024 campaign.

The 2024 Annual Campaign started Oct. 1 and runs until Sept. 30, 2024. You may donate online (credit card and Paypal accepted) at the FEBT Company Store, store.febt.org/donate.

If you prefer to send a check or money order payable to FEBT, address it to:

Karen Bulman, FEBT Fundraising Treasurer
P.O. Box 43063
Cincinnati, OH 45243.

FEBT is a designated 501(c)(3) organization and donations are tax-deductible in the U.S.

Donate now and double your money. An anonymous donor will match donations made between November 1 and November 14, up to \$15,000.



Saltillo Station EBT Archives Collection



Robertsdale Engine House. Lee Rainey collection.



Locomotive 15. EBT Archive Collection

OCTOBER FUNDRAISING UPDATE

2023 Campaign:

Thank you! We have completed a hugely successful 2023 Friends of the East Broad Top Fundraising Campaign. The 2023 total at the end of the Campaign on September 31 was \$270,775 in 976 donations. This is a new high for our annual fundraising campaigns.

The 2023 Campaign began with a goal of \$180,000 to support the March to Saltillo, fund the EBT archives, continue improvements in Robertsdale, and fund continued restoration efforts in Rockhill.

Your generous support of the 2023 campaign has allowed us to achieve these goals and more. We installed over 1,100 ties, and ordered 3,000 more. We rebuilt the Storehouse lean-to and the Car Shop south end in Rockhill. We funded new roofs for the Rockhill Boiler Shop and Locomotive Shop. New railbikes were delivered in Robertsdale. The Saltillo Station preliminary design work was completed. The EBT Archives & Special Collections Program added over 1,100 items to the public site, and completed digitizing and indexing all of the Baldwin drawings relating to locomotives Nos. 14 and 15. Thank you to all our 2023 donors for making this fantastic progress possible!



Steam returns south of Rockhill Furnace for the first time since 1956. Your donations allowed FEBT's Track Crew to make this possible. – Matthew Malkiewicz photo

2023 Fundraising Goal:

\$180,000

Late September Donations:

\$5,224.00

Campaign Total:

\$270,775.00 – 150.4%

2024 Campaign:

The 2024 Campaign got off to a strong start in October, with \$31,155 received in 156 donations between 10/1 and 10/21. Thank you to all donors for your generous support.

There are several ways to donate. Donations can be made online at <https://febt.org/campaign/> using the Company Store portion of the website, which accepts credit cards and PayPal payment methods to contribute. Donations may also be made by mailing a check, payable to FEBT, to:

FEBT Fundraising Treasurer
C/O Karen Bulman
P.O. Box 43063
Cincinnati, OH 45243

2024 Campaign Goal:

\$220,000

October Donations:

\$31,155.00

Campaign Total:

\$31,155.00 – 14.2%

October donors*:

John M. Acken	Jerry Allison	Larry Altoff	Beth Ann Andrews
David Arganbright	John J. Atherton	William Bailey	Alan Balma
Chet Barron	Donald G. Bayer	Owen F. Beeder	Vincent Bellafiore
Charles Blardone Jr.	William O. Blome	Alexander Bowser	Joseph R. Brabec
Kenneth Brink	Wayde Brown	Michael Buchala	Gregory Buchala
Kay Bullock	Dave & Karen Bulman	Richard L. Burkholder	
Capt. Davis S. Cangalosi, USN (Ret.)		David H. Capp	Thomas Carlson
Ricky Gene Case	Hal Clawson	Keith Clouse	Jay Cohen
Frank Couch	Robert Courneya	David Dewey	Rayfield Dietrich
Harry J. Downey	Frank R. Dziama	Dean & Louis Edmonds	
Thomas C. Emory	Linda Erdman	Carl Fabrizio	Pat Fahey
Robert Farkas	Gerard W. Farrell	Donald Fenstermacher	
Douglas Fink	Louis Fisher	William Fitch	Raymond Fitzpatrick
Robert Fry	Larry Fuchs	Robert Gladding	Stephen Gregory
William F. Grow	Robert W. Grzywacz	John Guffey	John A. Gummo
Jeff Gumpert	Frank J. Harker	Daniel Harnish	Herbert Hays III
Michael Hegedus	John Heitmann	John Helduser	Douglas Henry
William A. Hessler	Patrick Hiatte	Charles High	Melissa K. Holden
Richard Horn	Michael Huhn	Stephen Ingham	Dave Johnson
Tom Jordan	Bob Kaufman	William P. Kcenich	Steve Kelly
Victor V. Kidd	Stephen & Terri Klarich	Charles Klump	Douglas O. Langdon
Mark A. Lewis	Byron L. Locke	Marian Lynn	Alan Maples
Mike Matejka	David M. McMahon	Tom McMaster	Jesse J. Meeker
Stephen Meyer	Mike Minatelli	Tim Moffat	J. Harold Mohler
Michael Moore	Hugh Mose	Ronald J. Muldowney	W. R. Newton
Suzanne & Frank Niver		Charles F. Ober III	Barbara Oberding
Louis Pae	Thomas Parker	Selwyn Parks	Ershow Plugge Family
Richard Poletto	Walter Poppe	John Porco	Thomas Preisner
Lee Rainey	Michael J. Ray	Ronald W. Reckling	Paul Reiss
Allen Rider	Ryan Rimshaw	Jared I. Roberts	Ruth N. Rode
Edward Rogers	Michael E. Romansky	Mike & Robin Rotz	Robert Rule
Norman R. Runk	Ronald Saputski	Robert J. Savino	Kenneth R. Schumacher
James W. Seville	Jon M. Shade	Jesse Shetrom	Laurence Shiplett
Robert D. Shotsberger	Tom J. Simco	Vernon Simpson	Carl Skowronski
Thomas V. Sliviak	Jeffrey M. Slupski	Philip & Bev Smith	Ann Sparrough
Earle A. Stalfort, Jr.	Donald Stark	Gilbert L. Sterner	Paul & Matthew Stolzenfels
William Stone	David Sutton	Jesse Svoboda	Douglas C. Taylor
James Taylor	Daniel Thole	John Thompson	Christopher Tompkins
Paul Trap	John J. Tumolo III	Richard Ullery	Donald Way
Lee Wheeler	Bill & Margaret Wheeler	John F. Wheeler	Albert Wiggins
Norman Wilcox	Robert Wilcox	Sam W. Wilder	Brian Wolfe
Mark A. Yahner	Joseph R. Yakubisin	Patrick Yough	Robert Zimmerman

* - All donors listed represent donations received between September 22, 2023 and October 21, 2023. Donations received after October 21 will be reported in the December 2023 issue due to press time constraints.

- Karen Bulman and Dave Bulman

COMPANY STORE ITEM OF THE MONTH

This calendar features pictures of the East Broad Top railroad taken from 2020 through August 2023. They show images of the railroad's revival, including steam locomotive #16, brought back to service after 67 years. 11x17 inches, 12 month calendar.

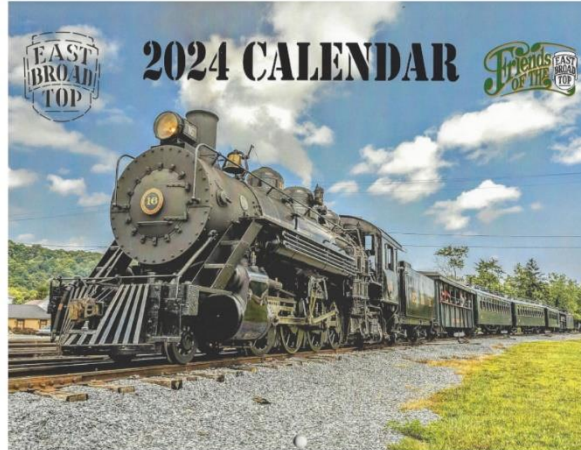


Image titles include:

First Winter Spectacular in Many Years

EBT Southbound

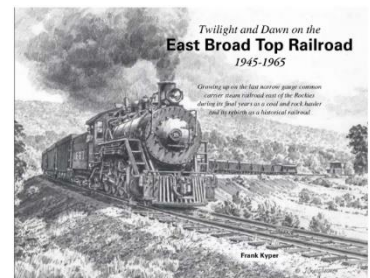
Getting Ready to leave Rockhill

The Machine Shop

\$19.99 Member Discount Applies Shipping \$6.25

Order on-line through the FEBT Company Store website at store.febt.org, using your account or create an account. PayPal, major credit cards, and personal checks payable to FEBT Company Store are accepted. *Money orders cannot be accepted and will be returned to sender. Mail orders, regardless of payment method, are no longer accepted.*

FEBT COMPANY STORE FOR EAST BROAD TOP HOLIDAY SHOPPING



ROBERTSDALE OCTOBER ROUNDUP

In the October newsletter I wrote that there had been 91 visitors so far in September. That was good start, but are you wondering how the rest of the month went? On Saturday 9/30 the EBT was visited by the Lexington Group. That ended up being three bus loads (plus a number who travelled in their own cars) who came to the museum late in the day. 181 more visitors. So, we ended September having had 272 visitors.

October had a good start:

- Ron McElrath brought a group of 25 to the museum on Thursday the 5th. Yes, if you bring a group of 20 or more, we will be happy to open the museum for your group – as long as our volunteers can staff the museum (hint, hint).
- Friday the 6th was the start of the Reunion weekend, and based on the number who registered in Robertsdale that day, we believe we had 140 visitors.
- Sunday the 8th brought 44 more visitors (who bothered to sign in, the actual number was surely more than that) to the museum.
- Friday 10/27 we welcomed a group of 18 4th through 8th grade students, plus chaperones and teachers, led by Colby McMillen.

So, September could claim 272 visitors. October ended with 259 visitors. Year-to-date we have had 869 visitors at the museum.

Of special note, on Friday of the Reunion, Jane and I were honored to be able to take part in naming the exhibit hall of the museum in honor of former FEBT President Henry (Hank) Inman. Hank was president when we started getting involved and “sold us” on the importance of the Robertsdale Museum. We trust that he’d be over the moon if he were able to see what a great museum his work has created.



*Left: Pete Clarke, Jane Clarke, and Andy Van Scyoc give remarks about the tenure of former FEBT President Hank Inman outside the museum in the Company Square due to the size of the crowd. – Doug Davenport photo
Right: Pete Clarke and Andy Van Scyoc stand underneath the sign memorializing the Hank Inman Exhibit Hall inside the FEBT Museum in Robertsdale. – Jane Clarke photo*

Not able to be one of the lucky members to take a walking tour with Ric Case and Ron Person at the reunion? Not to worry, your museum hosts took notes, and you’ll get all the newest info when you join in any of our regular tours (Hint, seems what we always thought was the 1st coal cleaning plant was the 2nd, which means that the sand flotation plant in Mt. Union was actually the 4th. Can you name the others? Know where the first shaft mine was?)

I can’t pass up the chance to mention that Steve Jackson was awarded the 2024 FEBT Volunteer Service award. Steve has helped with many chores and hosted many days at the museum, and he volunteers at the railroad as a shop tour guide

and is part of the track crew. He and his heavy equipment move large objects and mow the grass around the museum complex and the wye. In Robertsdale he has put in at least 313 hours. That's 39 8-hour days, that's 7.8 40-hour work weeks. And that's pretty impressive. Say thanks next time you see him.

The rail bikes arrived the week of the reunion. Alas, they suffered some damage in shipping, and have some components that need to be upgraded. For a lucky few, on Reunion weekend that meant that they got "First class tickets" (they sat in the seat where the pedals didn't work), so they could relax and let the others give them a ride. All went well until one of them asked when we were going to serve drinks and dinner. A good time was had by all. As I write this, the upgraded components are starting to arrive, and we hope to have time this week to start upgrading the first bike.



One of the two railbikes poses in front of the hopper display in Robertsdale.

– Eric Knepp photo

Oh, looking for a different way to volunteer? How about using one of the virtual model railroad software programs to build a virtual Robertsdale? How cool would it be to have iPads mounted on the rail bikes that played a trip down the line in 1914, or 1926, or 1946 as the bikes work their way down the line? If that sounds like something you'd like to do, I'd love to hear from you!

Technically not part of Robertsdale activities, but, on Oct 20th, our own Jane Clarke hosted a tour of the EBT for 54 people from the NMRA-MER convention "Round the Curve." Steve Jackson took the whole group on the shop tour. See Jane's article on Page 15 for more details.

I've been reminded lately that human nature demands that people always ask (even if not out loud), "What's in it for me?" Well, in this article you've been shown that in at least 2 cases people have used hosting in Robertsdale as an entry point to then do even more with the railroad. We can't promise that, but don't you like to know someone before you add them to your list of trusted people? That's maybe worth



These pipes protrude from the ground at the site of the first shaft mine in Robertsdale. For more information, come a take a walking tour at the FEBT Museum. – Greg Kifer photo

remembering when you consider volunteering as a host in Robertsdale - next year.

The FEBT Museum would like to thank Downtown Joe in Huntingdon for their generous donation of coffee and fixings for the reunion. Nothing good ever happens before coffee, so we thank them for helping to start our days off on the right foot. Please consider stopping by their shop on 5th St. between Penn and Allegheny streets (very close to the tracks) when you're in the area. Downtown Joe is the preferred coffee of the FEBT Museum



As you might guess, we (all the hosts) are pretty tired now. Lucky for us the season is over. What's that you say, Jane? Oh, that's right, it's not over at all. We'll be open nearly every Saturday that the railroad is running during Christmas in Coal Country: Nov 25, Dec 2, 9, and 16. However, we chose not to be open on Dec 23rd so we can be with our families for Christmas. Note that we will adjust to the season by closing one hour earlier than normal on those dates. So, we'll close at 4:00 PM rather than our normal 5:00 PM. Leaves are falling so you can see more. Rail bikes are here. There are new displays in the exhibit hall, and it's not brutally hot and buggy. What a nice time to come visit the museum in Robertsdale! We hope to see you there. – *Pete Clarke*

TRACK REPORT: MAINTAINING, MARCHING, AND ADDING

The track gang loves to engage in all sorts of conversations, gentle banter, observations of the work at hand and the work to come, those all-important jokes and stories, and so forth, as we go about our work trackside. One of the statements we often make to one another is this: "There's great job security working track at the East Broad Top Railroad". The plain truth of that statement is due to the fact that there is much to do to maintain what the railroad is currently using in its operations, and there is much to do to reclaim from Mother Nature the track leading southward toward Saltillo and beyond.

We accomplished a lot this month. (We accomplish a lot every month). Here are the details.

Maintaining What We're Using Currently



Jointed rail, such as the EBT has, presents maintenance needs that differ from continuously-welded rail. Despite numerous design attempts over the years to strengthen and stiffen rail joints, that place where two sticks of rail come together in a joint continues to be the weakest part of the track structure. The conditions imposed by the relative weakness of the joints means that lifting and tamping the joints is necessary now and again.

FEBT's personnel assisted the railroad's full-time staff in lifting and tamping a section of track on the north side of

Van Cresswell and John Quinn work with EBT Foundation Track Crew member Galen Covert to lift and tamp track joints near Horn's Crossing – Todd Johnson photo

McMullin's Summit, and in another section a bit further north in the area a bit south of Horn's Crossing. Early experience with trains running over the area are encouraging.

Another maintenance issue that got some attention this month was a tie replacement project in the north leg of the wye in the Rockhill yard.

Then, we surfaced and tamped Track 3 leading from the switch just south of the Blacklog Creek bridge. This track is now used regularly by trains returning from the Grove.

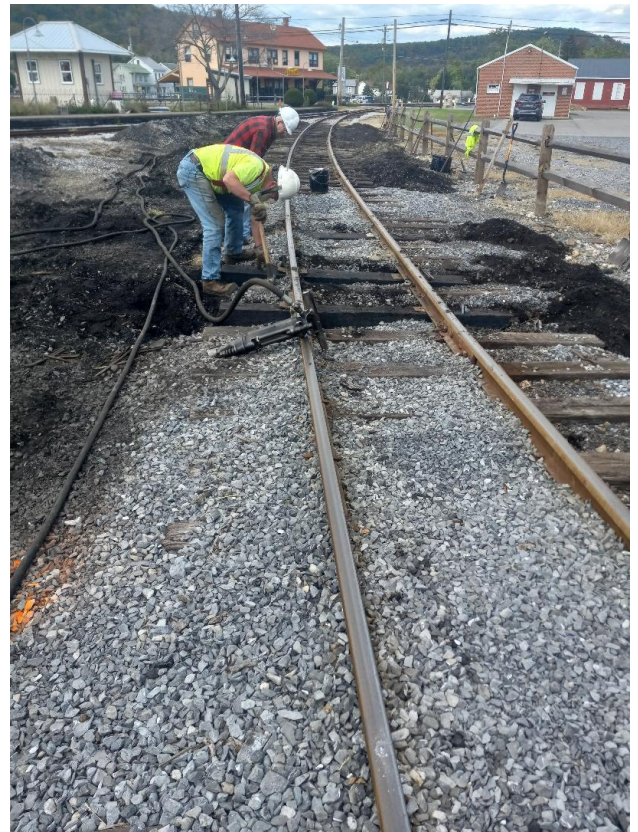
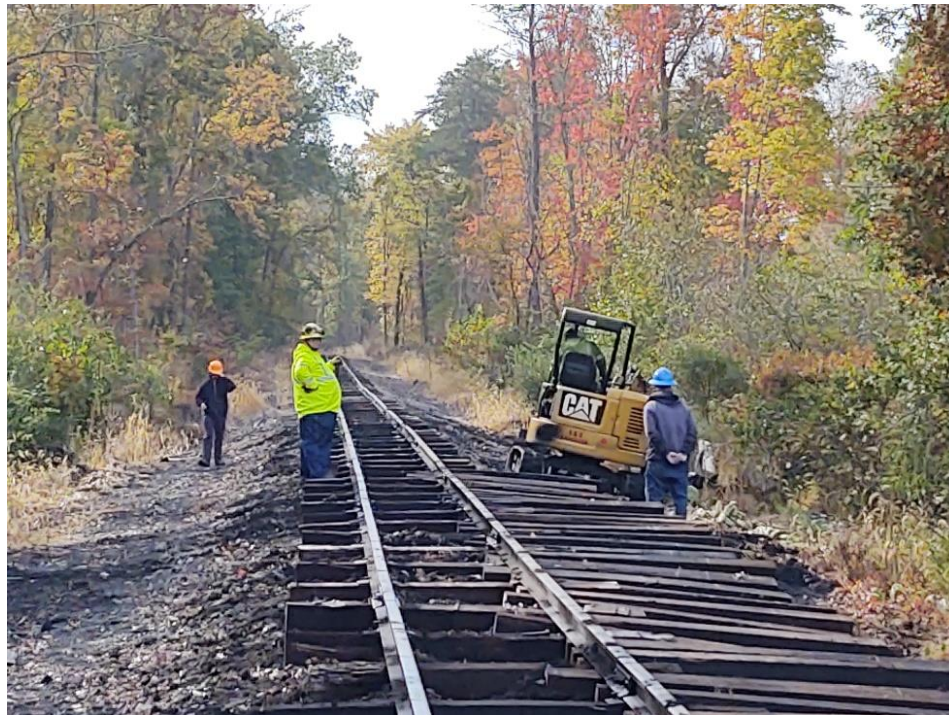
Marching Southward

We pushed further southward from the IOOF Cemetery Road crossing this month. 80 ties were installed south of the crossing, all of which are now spiked up.

As part of our work in this area, we dismantled every joint; cleaning, relubricating, and re-assembling each one with new bolts where required. This work is due to another aspect of working with jointed rail: If the joints become corroded, they won't have the necessary give-and-take to adjust to changes in temperature. Put another way, jointed rail has to have the ability to "breathe". Absent give-and-take, the track will suffer pull-aparts in cold weather, shearing off bolts and creating gaps in the joints. And, in hot weather, heat kinks are apt to develop, pushing the track out of alignment. Addressing the give-and-take in the joints is good preventative medicine for jointed rail.

If you're keeping count, tie work south of the IOOF crossing has reached a point over 300 feet south of the crossing. Joint work has reached a point about 460 feet south of the crossing.

During the week of October 23rd, 1,200 ties were delivered to the railroad. This will enable the track work to proceed southward. Purchase of these ties (which will total 3,000 eventually) was funded by the FEBT (thanks for your support!).



John Quinn and Van Cresswell set spikes in replaced ties along the north leg of the Rockhill wye. – Gene Tucker photo

Miscellaneous Tasks

From time-to-time, the railroad's management tasks us with unusual, but necessary, tasks.

FEBT track crew members assisted the full-time staff in clearing fallen trees in the track at Robertsdale in advance of the visit of members of the Lexington Group on September 30th.

FEBT Track Crew members insert ties into the main line south of Rockhill. Every third tie was inserted in this stretch 2022 to allow speeder operation; the two missing ties in between are now being installed to allow for a return to full service. – Larry Fuchs photo

We also assisted in clearing vegetation from around bridge piers on a small bridge located near the north side of the Borough of Shirleysburg. This is Bridge No. 3, which (I think) is about 30 feet long and some 10 to 15 feet above the water in Fort Run, is due for an inspection by bridge engineers. Clearing the vegetation will allow them to get a clearer look at the structure.



A south-facing view of the installed ties in the main line. – Larry Fuchs photo

The Track Gang Adds New Members

Sixteen people assisted with our work this month. (In a change in how we're going to do things, we're listing the names of those involved in the master list of volunteers which appears elsewhere in this newsletter.) However, we are delighted to welcome three new members to our work: Bill Kepner, Matthew Hosford (father) and Matthew Hosford (son) joined in our work this month. Each of them came a significant distance to do so. Welcome!

We appreciate and value the members of our fraternity (ladies, you're welcome to join us as well!). Deepest thanks go to each one! – Gene Tucker

JOIN IN OUR PROGRESS!

Our volunteers make possible everything that FEBT does. From building and equipment restoration, track work, operating the museum, giving tours, creating publications, fundraising, planning events, and running the organization, all depend on our volunteers. Fortunately, we have a great dedicated group of volunteers who make all this happen. So far this year 138 members have volunteered their time. Our Rockhill and Robertsdale on-site volunteers have contributed over 7,500 hours in 2023. These volunteers recognize the importance of their efforts to preserve, restore, and interpret the EBT.

Although we have a great team of volunteers, we need more! Many restoration sessions could use twice the number of volunteers to fully staff all of the on-going projects. Our restoration progress is paced by the number of volunteers applied to it. If you'd like to see us get to Saltillo faster, come out and join the track crew! Also, the organization is growing and we need more administrative and other support help to sustain it. We can use help from office work to carpentry to track laying. This includes on-site activities and tasks done remotely at home. Anyone can contribute. To get engaged, visit the volunteer page on our website <https://febt.org/volunteer/> or email me at dbulman115@gmail.com. – Dave Bulman

OCTOBER VOLUNTEERS

The following members volunteered in October in Rockhill Furnace and/or Robertsdale. Thanks to all FEBT volunteers for their dedicated efforts to preserve, restore, and interpret the EBT.

Editor's Note: An editorial mistake caused some September volunteers to not be properly identified in last month's issue. Names identified with an asterisk are recognized for their contributions in September. Names noted with a pound sign volunteered in both September and October, but were not properly recognized in the previous issue of the newsletter.

Bill Adams	Donald Barton, Jr.	Jerry Bertoldo	Victor Booth
Roy Burnham	Jane Clarke	Pete Clarke	Phil Coyle
Van Cresswell	Evard DeMott	Dave Ebright*	John Fordyce*
Larry Fuchs	Matthew Hosford	Matthew Hosford, Sr.	Evan Ivosevic*
Ted Ivosevic*	Steve Jackson	Dave Johnson	Todd Johnson
Bill Kepner	Greg Kifer	Eric Knepp*	Daniel Lane
Chris McCann	Jonathan Miller*	Joel Myers	Hans Plugge
John Quinn	Julie Rockwell	Rick Rourke	Roger Stier*
Gene Tucker#	Mike Wahler*	John Widmeyer	Scarlett Wirt

MEMBERSHIP BOX SCORE

The Friends of the East Broad Top
membership is up to
2090

UPCOMING EVENTS

<u>Date</u>	<u>Host</u>	<u>Event</u>
November 4, 5	FEBT	Rockhill Work Session
November 24, 25, 26	EBT	Christmas in Coal Country
November 24, 25	RTM	Lights, Camera, Christmas Trolleys!
November 25	RTM	Santa's Trolley
December 1-3, 8-10, 15-17, 22-23	EBT	Christmas in Coal Country
December 1, 2, 8, 9, 15, 16	RTM	Lights, Camera, Christmas Trolleys!
December 2, 9, 16	RTM	Santa's Trolley

<u>Hosts:</u> FEBT	Friends of the East Broad Top	www.febt.org
EBT	East Broad Top Railroad	www.eastbroadtop.com
RTM	Rockhill Trolley Museum	www.rockhilltrolley.org
BTACMHS	Broad Top Area Coal Miners Historical Society	broadtopminersmuseum.com

HOLIDAY EVENTS IN ROCKHILL



Holiday Events 2023



Santa's Trolley

- ✚ Enjoy a daytime ride aboard an electric trolley car.
- ✚ Take a ride to Blacklog Narrows
- ✚ Each child 12 years and under receives a free gift from Santa.
- ✚ Get a picture with Santa on a trolley.

www.rockhilltrolley.org
or
Find us on Facebook

NOVEMBER	DECEMBER
25	2, 9, & 16
10:00 AM TO 3:00 PM	
AGES 2 AND OLDER:	CHILDREN UNDER 2:
\$10.00	FREE

- ✚ Take an evening trolley car ride.
- ✚ Enjoy Christmas lights and displays.
- ✚ Lots of photo opportunities.
- ✚ Enjoy the warmth of a campfire.
- ✚ Complimentary refreshments in our pavilion.
- ✚ Tickets are good for multiple rides, depending on availability.

Lights, Camera, Christmas Trolleys!



NOVEMBER	DECEMBER
24 & 25	1, 2, 8, 9, 15, & 16
5:00 PM to 9:00 PM	
Adults: \$12.00	CHILDREN UNDER 2: FREE
Ages 2 to 12: \$10.00	

430 Meadow Street
Rockhill Furnace, PA 17249

Weekends: 814-447-9576
Weekdays: 610-428-7200

**COMBINATION TICKET FOR BOTH EVENTS – SATURDAYS ONLY:
\$15.00 PER RIDER WITH CHILDREN UNDER 2 FREE**

- CABOOSE -





Christmas

IN COAL COUNTRY

THE EAST BROAD TOP RAILROAD

Pennsylvania's Homegrown
Holiday Train!

CLASSES OF SERVICE

<p style="text-align: center; border-bottom: 1px solid black;">COACH</p> <p>ADULT (13+) \$25.00</p> <p>CHILD (2-12) \$20.00</p>		<p style="text-align: center; border-bottom: 1px solid black;">CABOOSE</p> <p>ADULT (13+) \$30.00</p> <p>CHILD (2-12) \$25.00</p>
---	--	---

ALL CARS HEATED BY AUTHENTIC COAL STOVES



BOOK NOW AT
EASTBROADTOP.COM



- COACH -

UPCOMING ROCKHILL FURNACE VOLUNTEER SESSIONS

The final Rockhill work session of the year is scheduled for Saturday and Sunday, November 4th and 5th. Work session dates for 2024 will be posted to the website once they are finalized.

Please consider coming out for one or more of the sessions to help us continue preservation and restoration of the East Broad Top Railroad. If you are interested in participating in the Rockhill volunteer sessions, including track work, and are not on the current signup distribution, please contact Charlie Wootton, the Rockhill volunteer coordinator, at rhrestoration@febt.org. Visit our website at febt.org/volunteer for more information on all of our volunteer projects and how you can participate. – *Dave Bulman* (dbulman115@gmail.com)

FEBT MUSEUM SCHEDULE



Hours: 10 AM to 4 PM
November 25
December 2, 9, 16

EBT WELL-REPRESENTED AT MER CONVENTION

The Mid-Eastern Region of the National Model Railroad Association (NMRA) held its convention in Altoona October 19-22, 2023. It was appropriately titled “Round the Curve” and included several EBT-related events;

- On Oct 19th, Lee Rainey held an operating session on his PRR-EBT Mount Union layout. This unusual layout features switching on standard gauge and dual gauge track in Mount Union with a few through freights on the PRR.
- On Oct 20th, Jane Clarke hosted a bus tour of the EBT for 54 people. The group started with a trolley ride, then a train ride. Steve Jackson took the whole group on the shop tour. We ended the day with a visit to the Bricktown Model Railroaders Association’s club layout in Mount Union. (No, we didn’t have time to do the “haunt.”)
- Lee Rainey was not on the bus, but was at the convention hotel giving a presentation called “East Broad Top 101.” This was intended as an introduction to the railroad, but seasoned EBT fans also enjoyed Lee’s stories and the images he presented.
- Lee opened his layout again on the 22nd for casual visitors. He reported that he had about 30 guests!



Above: Steve Jackson leads the MER group on a tour of the EBT Shop Complex. – Jane Clarke photo

Below left: The Round the Curve group boards Car 163, which is stopped on RTM’s “museum curve”. – Jane Clarke photo

Bottom right: MER participants enjoy the EBT’s new coaches. – Jane Clarke photo



There is a lot of interest in the EBT out there! – Jane Clarke

WANTS AND NEEDS

We have some specific volunteer roles we want to fill. Please consider if you could help with these.

FEBT Reunion Coordinator – FEBT needs someone to organize our annual marquee event, the Fall Reunion. The Reunion Coordinator is responsible for venue arrangements, speaker/program plans, registration, and reunion volunteer coordination. If interested or at least would like to learn more, please contact Andy at vanscyoc@gmail.com.

FEBT Youth Volunteer Leader – FEBT intends to create a young volunteer program for EBT enthusiasts under age 18. We need someone to organize and lead this program, with help and support from FEBT leadership. The FEBT Youth Volunteer Leader will help to create the next generation of FEBT volunteers. If interested or for more info, please contact Dave Bulman at dbulman115@gmail.com.



Rockhill Restoration Coordinator Charlie Wooton addresses the gathered crowd at the annual business meeting during the 2023 Fall reunion. – Eric Knepp photo

ABOUT THIS ORGANIZATION

Friends of the East Broad Top, Inc. (FEBT) is a 501(c)(3) nonprofit, historical, and educational society dedicated to the preservation, restoration, and interpretation of the East Broad Top Railroad National Historic Landmark in Huntingdon County, Pennsylvania. It was organized in 1983 and now boasts over 2,000 members. FEBT publishes an award-winning magazine, *Timber Transfer*, and a monthly e-newsletter, and operates a museum in Robertsdale PA, the EBT's southern terminus. See febt.org/ for more information.

ABOUT THIS NEWSLETTER

The Friends of the East Broad Top Newsletter is a monthly digital-only periodical. Started in 2020, it is intended to keep members and donors apprised of what the organization has done and will be doing. The FEBT Newsletter is distributed by email to the current list of members and donors, and is a privilege of contributing to the FEBT's cause of preserving, restoring, and interpreting the East Broad Top Railroad for current and future generations. The editor can be contacted at Newsletter@febt.org. Previous issues of the FEBT Newsletter may be found at febt.org/newsletter. Press time for information submitted is 8:00 PM Eastern time on the 25th of each month. Events occurring after the 25th, such as donations and memberships, will be considered part of the following month's information.