

<b>In This Issue:</b>		
<b>FEBT Publications Notes</b>		<b>2</b>
<b>Company Store Item of the Month</b>		<b>2</b>
<b>FEBT Track Crew Busy in South End of Yard</b>		<b>2</b>
<b>January Rockhill Work Session Progress</b>		<b>4</b>
<b>East Broad Top Archives and Special Collections</b>		
<b>    Accomplishments in 2022</b>		<b>5</b>
<b>A Positive Outlook for Robertsdale in 2023</b>		<b>7</b>
<b>Upcoming Events</b>		<b>8</b>
<b>Upcoming Rockhill Furnace Volunteer Sessions</b>		<b>8</b>
<b>Upcoming Robertsdale Volunteer Sessions</b>		<b>8</b>
<b>What's Planned This Year in Rockhill Furnace?</b>		<b>9</b>
<b>January Fundraising Update</b>		<b>10</b>



*A driving snow comes down on the Rockhill Yard during a Lerro Photography photo shoot in December 2019. This was the last public event the Kovalchick family hosted prior to the sale of the railroad to the EBT Foundation in February 2020, three years ago this month. – Dave Camisa photo*

# FEBT PUBLICATIONS NOTES

The Winter 2023 issue of *Timber Transfer* will be a week or two late, so that I can add some photos from the EBT Winter Spectacular. Thanks for understanding! – *Jane Clarke*

Speaking of Winter Spectacular pictures, it's time to remind you of the annual FEBT Newsletter Winter Spectacular Photo Contest. Submit your unwatermarked photos from this year's event to [newsletter@febt.org](mailto:newsletter@febt.org) by February 25<sup>th</sup>. The ten best photos will be included in the March 2023 issue, with the photo selected as best earning the honor of cover photo for the month. Each year has offered a variety of equipment, weather, and vantage points, and 2023 is expected to have its own unique flavor to it as well. I look forward to lots of pictures to sort through! It should be noted that any photos submitted are considered a donation for FEBT to use in any media, but credit will always be given to the photographer. – *Doug Davenport*

## COMPANY STORE ITEM OF THE MONTH

### EBT Foundry and Pattern Shop in HO Scale



Conceived by  
Broad Top  
Mountain Models



Designed and  
manufactured by  
banta modelworks



The footprint is 18 1/4" long by 6 1/2" wide. All laser cut wood plus one 3D printed brick wall. Features precut battens and fencing, trolley in the overhead, timbering in the scrap pile, and appropriate chimneys. The kit follows our usual assembly process of an inner structure covered with siding.

**\$168 regular price. Member discount applies. Shipping \$10.**

Order through FEBT Company Store website at [store.febt.org](http://store.febt.org) (PayPal, credit cards accepted.) Mail orders must enclose check payable to FEBT Company Store (no money orders.) PA residents must include 6% sales tax. Send mail orders to FEBT Company Store, 121 Chester Drive. #215, Pine Grove Mills, PA USA 16868-0215.

## FEBT TRACK CREW BUSY IN SOUTH END OF YARD

Over the past three months or so, FEBT's track forces have engaged in redoing and rehabbing trackage in the Rockhill yard. To that end, the Lumber Shed lead, the Car Shop lead, and the Repair-In-Place (RIP) track have all received the installation of a large number of crossties (about 250 in all, or thereabouts, including 111 in the RIP track alone). In addition, the RIP track whose former crossties were no more, and which had suffered a slow descent into the *schmutz* (a lovely German word meaning "dirt", a term we use frequently when doing our work) required lifting the rails about three inches out of said *schmutz*. The RIP track had been host to three hoppers, one of which had its northernmost truck stuck

in the schmutz off the end of the track. We were told that those three hoppers had been there since the close of the railroad's common carrier days in 1956. Once the work on the RIP track had reached the point where the M-6 locomotive could access them, they were each hauled off the track. Now, the work is done, a sturdy bumper has been installed at the end of the RIP track to prevent another car from descending into the schmutz below. As part of our work, the stub switch in the Car Shop lead was also redone and was re-adjusted. It probably hasn't looked as good as it does now in many years.

Once the basic work on the Car Shop lead and the RIP track was done, Henry Long, the railroad's full-time staff member, ran the mechanical tamper and then the regulator over the Car Shop lead and the RIP track. The result is stunning! Following this phase of the work, the thirteen-foot-long headblock tie in the stub switch leading to the RIP track was replaced. Adjustments were also made to the two side-by-side frogs in the triple stub switch, allowing wheelsets to pass through the two frogs (there are no guard rails in this location) without binding.



Then, at mid-month, we turned our attention to the Coal Tipple Switch, located in the south leg of the wye near the south end of the yard. This switch sees a lot of traffic, since each train that makes its way through the wye passes over it. The work here involved repositioning ties so as to make mechanical tamping possible, gauge correction, and minor fine points. At this writing the basic work on the switch is done. In due course, it will be lifted and tamped. Our focus, going forward, will continue to be the Rockhill yard.

We are blessed to have a large constituency of track workers. Some we see with regularity, others who live at a distance less frequently. But, as I'm fond of saying, "It's all good". We value the contributions of those who make the sacrifice in time and effort to join us trackside.

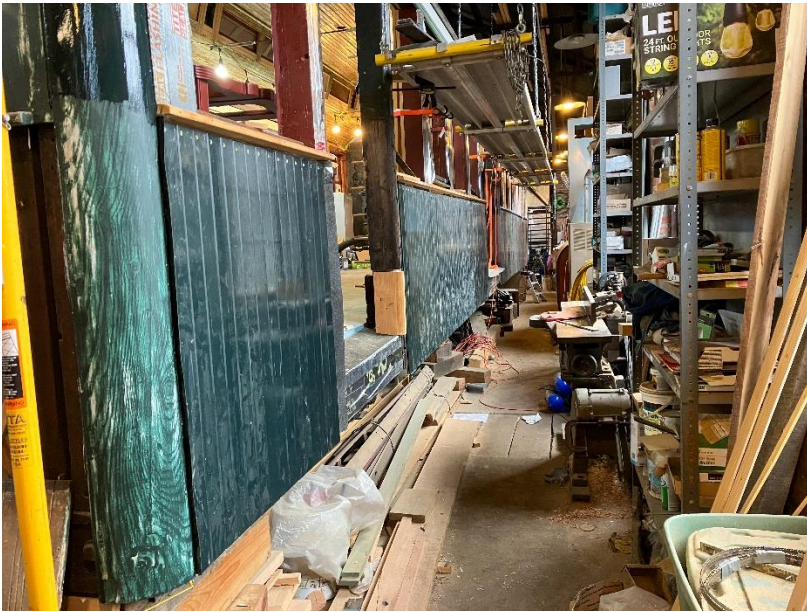
Since the last report, the following have assisted our efforts: Dave Johnson, John Quinn, Daniel Lane, Gordon Ley, Bill Reynolds, Victor Booth, Tom Hesketh, Ryan Rimshaw, Mark Reese, Jerry Bertoldo, Tim Reames, Dave Syiek (father), Gregory Syiek (son), Justin Santichen, Steve Jackson, Rick Rourke, Jonathan Smith (a full-time member of the railroad's staff...first time working track), Tom Jordan, Dave Hart, Tom Perman, Bruce Schreiber (new – welcome!), Chris Wenger, Phil Coyle, Joel Myers, and Doug Linebaugh. – *Gene Tucker*

*Above: The RIP track rehabilitation was completed on January 13<sup>th</sup>, 2023. The EBT Foundation's mechanical equipment provides a nice finish to the manual tie replacement work of the FEBT Track Crew. Left: A rebuilt coal dock lead switch makes for a safer path for tourist trains turning on the Rockhill wye.*  
– *Gene Tucker photos*

# JANUARY ROCKHILL WORK SESSION PROGRESS



We had a great start to the 2023 Rockhill work sessions on January 7-8. A good turnout and mild weather resulted in significant progress on multiple fronts. As you read above, the track crew completed work on the RIP track south of the car shop including the installation of 90 ties. Completion of this work allowed the three hoppers that have been sitting near the end of the car shop since 1956 to be moved to a new location. The restoration of the south end of the car shop continued, including the installation of the last two of the six large shop doors. Progress on Combine 14 reached a milestone with new exterior siding installation completed on one side of the car while interior paint prep continued. Work continued on Boxcar 174 to repair the side frame rail and bolster. Storehouse restoration continued with the first floor bin restocking nearing completion and reconditioned window sashes reinstalled in the second floor. See photos for more details. – *Dave Bulman*



*Top left: The south end of the Car Shop has come a long way since FEBT began its rehabilitation efforts in August 2022. – Craig Confair photo*

*Left: Siding has been installed on Combine 14. – Eric Knepp photo*

*Bottom left: The sign-in sheet wasn't enough space for all the volunteers who came out for the January work session. – David Ebright photo*

*Bottom right: Windows are completed on the upper level of the Storehouse during the January work session. – Dave Bulman photo*

ROCKHILL WORK SESSION Date 1/8/2023

Name	Start	End	Phone	Email	Emergency
CHARLES					
Roscoe SENNET	7:00	4:00			
David Ebright	9:00				A.L.
Tom Periman	9:00				W.J.
Craig Confair	9:00				J.
MARR REESE	9:00				B.H.
Vicki Taylor Broad Th	9:00				A.
Ryan Rimma	9:00	3:30			A.
Jim WITMER	9:00	3:30			O.
Thomas Leist	9:00	3:30			C.
DAVE BULMAN	9:00				K.
Stephen Jacobs	9:00	2:00			
Chris Conular	9:00	4:00			
William Adams	9:30				
Jack FENWICK	9:00	3:40			
Andy Van Sice	9:30	3:30			
Christine Holst	10:00	3:30			
Alex Cook	10:30	2:00			
Eric Knepp	1:15				



# EAST BROAD TOP ARCHIVES AND SPECIAL COLLECTIONS ACCOMPLISHMENTS IN 2022

The East Broad Top Archives and Special Collections goals for 2022 were to continue laying a solid foundation for the program while enabling continued access to support operations and restoration, to enable limited research by EBT scholars, and to feature selected cataloged materials through a public-facing, online, digital catalog. Accomplishments for 2022 are summarized below.

## Personnel

1. Julie Rockwell, EBT archivist, continued to work part-time for 20 hours weekly until June when 30 hours weekly were funded by FEBT.
2. Sammy Bellin was hired in June as a part-time archives technician for 25 hours weekly. Sammy has scanned and cataloged over 1,200 archival materials.
3. Brian Standfest was the EBT archives intern from Juniata College and worked specifically on the NRHS grant project for 8 weeks, 20 hours weekly. Brian inventoried over 1,000 maps and drawings.
4. Lee Rainey, EBT curator, and Scarlett Wirt, FEBT archives custodian, continued to support the archives as an integral part of program development, planning, and advocacy; and collections management that includes managing FEBT collections. Lee has meta-tagged over 1,200 items for the search engine on the public access site (with some individual items receiving as many as sixty subject-matter tags.)



*The Archives Team of Julie Rockwell, Sammy Bellin, Scarlett Wirt, and Lee Rainey. – Curtis Rockwell photo*

## Program Planning

The Conservation Center for Art and Historic Artifacts (CCAHA) Preservation Needs Assessment report, completed in May, identified 156 recommendations focused on the areas of preservation planning, buildings and site, environmental conditions, security and emergency preparedness, and collections care and storage. (Emergency preparedness is the focus of a grant application submitted in January 2023. Fingers crossed!)

The team finalized policies on Scope of Collections, Access and Use, and Intake Donation and Deed of Gift.

## Facilities and Technical Infrastructure

The Archives office was set up in the stations' former Chief Engineer's Office with purchasing and implementation of the following:

- Cataloging and digitization computer workstation (funded by donation)
- Epson V850Pro scanner (funded by donation)
- WideTEK large format scanner (funded by NRHS Heritage grant)
- PastPerfect Web Edition software with Public Access (funded by FEBT)
- Adobe Photoshop Elements (funded by EBTF)

## Preservation

115 bins of 90 qt., 40 qt., and 28 qt. sizes were filled with the following:

- EBT forms and parts manuals cleared from the Stone House, second floor during the FEBT May work weekend.

- EBT administrative and operations records, subsidiary and related companies records, ephemera, sales and marketing materials, and photographs collected from the station second floor administrative offices and other shops complex buildings.
- Literally thousands of rolled and folded loose maps and drawings found in the Chief Engineer’s Office and west vault.

These materials are now secured in the Archives office, the west vault, and the attic.

### Access

1. Internal research to support restoration and operations included: scanning of ROW, valuation, and property maps; bridges, building infrastructure, and engine drawings; and photographs and administrative records in support of sales and marketing activities.
2. Public access through the online digital catalog: <https://ebtarchives.catalogaccess.com/> launched on Saturday, October 8 during the FEBT Reunion with over 1,000 catalog entries with images and the infrastructure for requesting images for a fee. Hundreds of Items have been added since the Reunion.
3. EBT archives webpage on the Foundation website (with link also available from the FEBT website): <https://ebtfoundation.org/archives/>

### Educational Outreach and Community Engagement

1. Partnership with the Juniata College Museum of Art to produce the student-driven exhibition “East Broad Top Railroad: Celebrating 150 Years,” between September 29 - December 9. The exhibition received 709 visitors and included an opening night reception, a community partnership reception sponsored by the Foundation, and a lecture presented by Julie Rockwell, archivist, and Sammy Bellin, archives technician.
2. EBT archivist Julie Rockwell participated as a guest speaker at the Three Springs-Satillo Area Historical Society annual dinner and the Altoona Rotary Club.
3. “EBT Archives Days,” featuring archival materials, were held for five Saturdays during the summer and fall season at the FEBT Robertsdale Museum and attracted 184 visitors.

– Julie Rockwell and Lee Rainey



*Thomas Faust sands the woodwork on the interior of Combine 14 during the January 2023 Rockhill Work Session. – David Ebright photo*

# A POSITIVE OUTLOOK FOR ROBERTSDALE IN 2023

The editor asked that this month's entry to be a look forward; to list what we see/plan/hope for in 2023.

We hope to have enough volunteers to enable us to again be open every Saturday that the railroad runs trains. The more people who help, the less work each volunteer has to do. This is "work" that requires no physical abilities. This work does not require that you know everything that an EBT historian or author knows about the EBT. Museum hosts answer questions from guests, lead walking and/or handcar/railbike (see below) tours (OK, that part is physical, but not required of everyone), and make gift shop sales. The gift shop made a significant amount of money for FEBT in 2022.

If you ask anyone who has done it, this work is great fun. Proof? Everyone who did it last year has offered to do it again (except where health and job issues have come in). Everyone who does it, wants to do it again – that should tell you all you need to know. All except that, we need your help. FEBT and the Robertsdale Museum are 100% volunteer. We need you. We already have this year's schedule, including that we have dates for our training days. Send me an email, join the team.



*One goal for 2023 is to improve the appearance of these hopper cars on the Scale Track in Robertsdale. – Jane Clarke photo*

We hope to get the hopper cars painted and lettered. We are looking for someone to take charge of that effort. If you'd like to be the leader on this, contact me ([febt@aol.com](mailto:febt@aol.com)) or Charlie Wootton ([cwootton01@centurylink.net](mailto:cwootton01@centurylink.net)).

We plan additional improvements to our walking path. That's actually the biggest thing in this list. Yet, because it's so big and will take so long, and I don't want to promise things, so I have only that one sentence to say about it.

Have you ridden the handcar in Robertsdale? If so, you know how difficult it is. We have signed a contract to get railbikes, which will hopefully arrive for Opening Day of this season. If that makes you picture a bicycle, nope, see the photo below. Easy, light, comfortable, and safe.

We hope to open the library to allow members to come read from the many books and magazines that have been donated. Details will come later, but you will have to contact the librarian ahead of time to request the date you'll visit and what



you'd like to read. Want to help? How about volunteering to be the librarian? All you need is an email address. You don't even have to be in Robertsdale. Contact me if you're interested.

Archivist Julie Rockwell plans to again bring her very popular "Archives Days" to Robertsdale. Stay tuned for the schedule of these events, but there will be one each month, May through September.

*This standard gauge sample picture of a railbike is similar to what the FEBT Museum will have in 2023, only in narrow gauge form. – Railriders photo*

How about a barbershop quartet at the former barbershop? New items at the gift shop? Another large information panel produced? Rain gutters and downspouts to keep the drips off of your head as you walk in? Those and more ideas are in the works.

Have you had that coffee and those donuts? They may not be there all the time, but it's worth the drive just to see if they are. Robertsdale, even when there's steam engines pulling those great looking and comfortable riding new coaches, it's a place you'll want to visit again and again. – *Pete Clarke*

## UPCOMING EVENTS

<b>Date</b>	<b>Host</b>	<b>Event</b>
February 4, 5	FEBT	Rockhill Work Session
February 18, 19	EBT/RTM	Winter Spectacular
March 4, 5	FEBT	Rockhill Work Session
April 1, 2	FEBT	Rockhill Work Session
May 6	BTACMHS	2023 Season Opening Day
May 13	FEBT	FEBT Museum Archives Day
May 20, 21	FEBT	Rockhill Work Session
May 22-26	FEBT	Rockhill Spring Work Week
June 10, 11	FEBT	Rockhill Work Session
June 10	FEBT	FEBT Museum Archives Day
July 1, 2	FEBT	Rockhill Work Session
July 8	FEBT	FEBT Museum Archives Day
July 29, 30	FEBT	Rockhill Work Session
August 12	FEBT	FEBT Museum Archives Day
August 19, 20	FEBT	Rockhill Work Session
September 9, 10	FEBT	Rockhill Work Session
September 9	FEBT	FEBT Museum Archives Day
September 18-22	FEBT	Rockhill Fall Work Week
October 6	FEBT	FEBT Museum Archives Day
November 4, 5	FEBT	Rockhill Work Session

<u>Hosts:</u> FEBT	Friends of the East Broad Top	<a href="http://www.febt.org">www.febt.org</a>
EBT	East Broad Top Railroad	<a href="http://www.eastbroadtop.com">www.eastbroadtop.com</a>
RTM	Rockhill Trolley Museum	<a href="http://www.rockhilltrolley.org">www.rockhilltrolley.org</a>
BTACMHS	Broad Top Area Coal Miners Historical Society	<a href="http://broadtopminersmuseum.com">broadtopminersmuseum.com</a>

## UPCOMING ROCKHILL FURNACE VOLUNTEER SESSIONS

The next Rockhill Furnace volunteer session will take place Saturday and Sunday, February 4<sup>th</sup> and 5<sup>th</sup>. Dates for the remainder of the work sessions for 2023 are posted on our website. Please consider coming out for one or more of the sessions to help us continue to preserve and restore the East Broad Top. Visit our website at <https://febt.org/volunteer/> for more information on projects and how you can participate. If you are interested in participating in the Rockhill Furnace volunteer sessions including track work, and are not on the current signup distribution, please contact Charlie Wootton, the Rockhill Furnace volunteer coordinator, at [rhrestoration@febt.org](mailto:rhrestoration@febt.org). – Dave Bulman

## UPCOMING ROBERTSDALE VOLUNTEER SESSIONS

Future work sessions in Robertsdale are not yet scheduled. If you'd like to be added to the crew, please contact Pete Clarke at [febt@aol.com](mailto:febt@aol.com) to get added to the crew call list. – *Pete Clarke*



# WHAT'S PLANNED THIS YEAR IN ROCKHILL FURNANCE?

This will be an exciting year for the EBT and FEBT in Rockhill. Completion or major progress on multiple projects is anticipated with continued volunteer support. Volunteers can look forward to working on projects with the sound of a working steam engine in the background for the first time since 2011!

This should be another big year for the track crew. Tracks 4 and 5 in the Rockhill Yard are planned to be rebuilt, and the main line south from the Rt. 475 crossing to the Pogue Bridge is slated to be rehabilitated with new ties to be supplied by the FEBT fundraising campaign.

The rebuilding of the south end of the Car Shop should be completed, with additional restoration of the interior of the Car Shop planned. The building restoration of the Storehouse will be completed, with the historic hardware returned to the original bins. The Storehouse lean-to between the Storehouse and Stone House will be reconstructed from the ground up.

Combine 14 will see the completion of the new exterior siding installation, and continued progress to complete the interior assembly and painting. Boxcar 174 will see continued metal repair and replacement to get it ready for service.



*Trackwork in the Rockhill Yard is sure to be even more fun to join as the weather warms up. This photo shows the RIP track under repair during the January 2023 work session. – Dave Bulman photo*



The window crew will continue rebuilding and installing windows in the shop complex, and the painting crew will continue applying gallons of EBT red paint to shop buildings.

FEBT volunteers will also support various other projects as requested by the EBTF throughout the Rockhill complex.

*FEBT members gather outside the Paint Shop for the morning briefing during the January 2023 work session. – Dave Bulman photo*

# JANUARY FUNDRAISING UPDATE

Thank you to all who have contributed to the 2023 Fundraising Campaign! Your donations amassed nearly \$33,000 over the past month, and FEBT has nearly reached the goal for the campaign. 63 donations during the past month contributed to the total. FEBT looks forward to using these funds for trackwork south from Rockhill to Pogue Bridge, supporting the EBT Archives & Special Collections program, visitor experience improvements in Robertsdale, and for continued work around the Rockhill Shops Complex. Please join us in carrying out these tasks as the year progresses.

**2023 Fundraising Goal:**  
\$180,000

**January Donations:**  
\$32,807.23

**Campaign Total:**  
\$173,754.80 – 96.5%

January donors\*:

David A. Ackerman	Keith Allen	Jerry Allison	Larry Altoff
Ron Beckman	William Best	Lawrence Biemiller	Charles H. Bikle
Alexander Bowser	David Bulman	Mr. & Mrs. Richard L. Burkholder	
Ernest Buyok	David H. Capp	Thomas G. Carlson	Craig & Jill Confair
Bruce H. Courter	Mark Delestatius	Robert R. Farquharson	J. Harry Feldman
Douglas E. Fink	David Fisher	Ray M. Fritsch	Robert I. Harrington
Jeff Hickman	Charles High	Dave Johnson	Patricia A. Jud
John T. Keene	Edward Kompare	Keith Kreider	Erik G. Ledbetter
Troy Litzel	David M. McMahon	Paul & Cheryl Mensing	Irvine G. Milheim
James G. Milheim	James R. Montgomery	Philip Padgett	Donald Plotkin
Hans Plugge	Brian K. Poole	Richard G. Rutledge	Kathryn Senecal
Richard Slattery	Chris Spina	Kurt Stetzer	John Van Scyoc
Richard E. Wachter	Ted Weidlein	Richard Weiss	David S. Whitaker
John Wiseley	Brian Wolfe	Edward Wood	

In Memory of Bradley Herbert Dobbins:  
Jocelyn Dobbins

In Memory of Nathan M. Kline:  
Kim Kline

In Memory of William Landis:  
John & Tammy Gaffney

In Memory of Eric W. Turner:  
Margot A. Turner

\* - All donors listed represent donations received between December 22, 2022 and January 21, 2023. Donations received after January 21 will be reported in the March 2023 issue due to press time constraints.  
- Ray Davidowski and Doug Davenport

**MEMBERSHIP BOX SCORE**  
The Friends of the East Broad Top  
membership is up to  
**1810**

## ABOUT THIS ORGANIZATION

Friends of the East Broad Top, Inc. (FEBT) is a 501(c)(3) nonprofit, historical, and educational society dedicated to the preservation, restoration, and interpretation of the East Broad Top Railroad National Historic Landmark in Huntingdon County, Pennsylvania. It was organized in 1983 and now boasts over 1,700 members. FEBT publishes an award-winning magazine, *Timber Transfer*, and a monthly e-newsletter, and operates a museum in Robertsdale PA, the EBT's southern terminus. See [febt.org/](http://febt.org/) for more information.



*This view of the south and east faces of the Car Shop in January 2023 shows the work FEBT has undertaken on the structure. Stabilization, windows, siding repair and painting, door reconstruction, and trackwork have all been accomplished over the last three years. FEBT has always been intent on preserving the structures around the Rockhill Shops Complex. – Dave Camisa photo*

## ABOUT THIS NEWSLETTER

The Friends of the East Broad Top Newsletter is a monthly digital-only periodical. Started in 2020, it is intended to keep members and donors apprised of what the organization has done and will be doing. The FEBT Newsletter is distributed by email to the current list of members and donors, and is a privilege of contributing to the FEBT's cause of preserving, restoring, and interpreting the East Broad Top Railroad for current and future generations. The editor can be contacted at [Newsletter@febt.org](mailto:Newsletter@febt.org). Press time for information submitted is 8:00 PM Eastern time on the 25<sup>th</sup> of each month. Events occurring after the 25<sup>th</sup>, such as donations and memberships, will be considered part of the following month's information.