

In This Issue: Winter Spectacular Photo Contest	2
FEBT BoD Kicks Off 2022	2
January Rockhill Work Session	2
Upcoming Events	3
Volunteer Recruiting – We Need Your Help!	5
Robertsdale Goals for 2022	6
Saltillo Station and Tank Update	8
January Fundraising Update	9
Company Store Item of the Month	10
Archives Moves to Chief Engineer’s Office	11
Candidates Sought for Board of Directors Election	12
EBT 4th in <i>Trains Magazine</i> Stories of 2021	12
Reunion Planning Needs Your Help	13



*A crisp and clear
Saturday morning
in Rockhill
Furnace during
the January work
session. Note the
storehouse in the
distance. – Dave
Bulman photo*

WINTER SPECTACULAR PHOTO CONTEST

The Friends of the East Broad Top Newsletter is pleased to announce the second annual Winter Spectacular Photo Contest. This year, the Winter Spectacular will be held on Saturday, February 19th. Please submit your pictures from the event to the newsletter editor at Newsletter@febt.org by 8:00 PM on February 25th for consideration. The 10 best submitted pictures, as selected by the editor, will appear in the March 2022 newsletter, with the best entry earning cover photo honors. Last year's event graced us with a snow-covered Aughwick Valley, which made for a fun event and excellent photography. The 2022 event will see an expansion of operations, so new photo opportunities will be available. Please note that any photos submitted may be used in other FEBT media in the future, such as this newsletter, FEBT social media, the FEBT website, and the *Timber Transfer*. Proper credit will be given to the photographer, of course. – *Doug Davenport*

FEBT BOD KICKS OFF 2022

The Board of Directors met on the 5th of January and covered three main topics:

- With the phenomenal success of the 2022 Fundraising Campaign the Board is working to ensure the 2022 projects are set to begin. Furthermore, the Board is evaluating our next priorities and some additional partnership opportunities that are now possible thanks to your outstanding generosity. We should be able to announce some of these in the next issue.
- The Board discussed the organization's volunteer needs. Our rapid growth and fundraising success has overwhelmed our volunteer pool. We need both hands-on restoration volunteers and behind-the-scenes administrative volunteers. The President stood up a Volunteer Recruitment Committee chaired by Dave Bulman, who immediately put together the call for volunteers you see in this issue.
- The Board reviewed several guiding policy documents for the Archives. The Archives team has been making great progress and is working to define access and use, scope of collections, and other policies that will serve to structure much of what they will do in the future. These documents are slated for approval at our February meeting. – *Andy Van Scyoc*

JANUARY ROCKHILL WORK SESSION



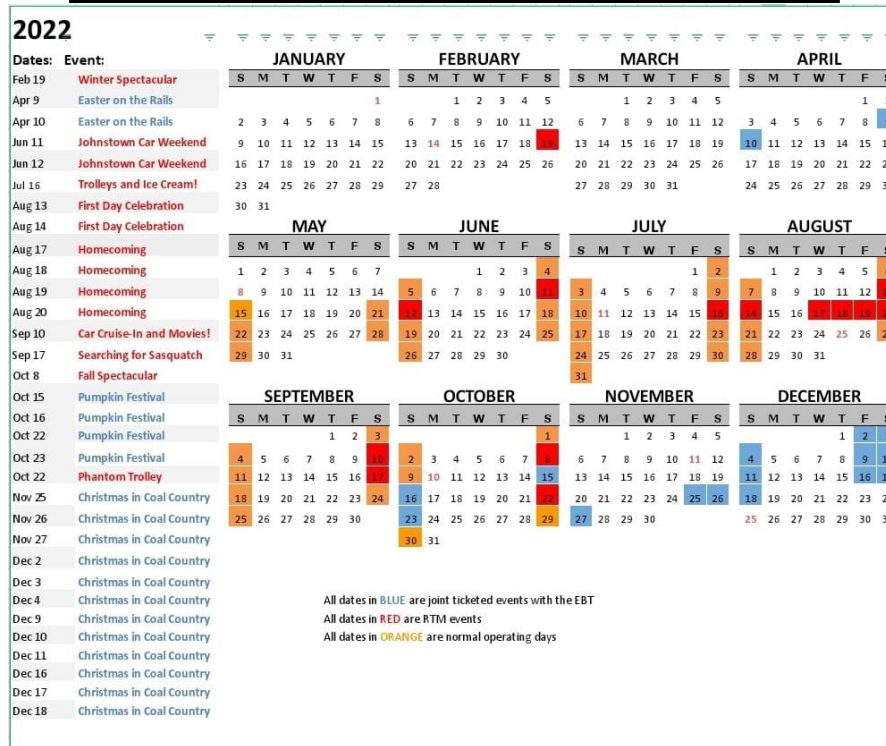
An abbreviated work session was held in Rockhill Furnace on Saturday, January 8th. The day was clear and cold with a fresh blanket of snow. Most of the activity was focused on Combine 14, located inside the heated paint shop. Good progress was made on window installation and paint prep. Other FEBT volunteers assisted Foundation members in organizing the depot attic to provide access to archival records. Work also continued in the unheated storehouse to reconstruct the first floor storage bins. Saturday night brought a significant ice storm, so most activity on Sunday was postponed until February.

Progress on rebuilding the bins in the first floor of the storehouse. Installation requires lots of trimming to fit around the rebuilt wall structure. Someday soon these will again be full of original EBT hardware. – Dave Bulman photo

UPCOMING EVENTS

Date	Host	Event
February 5, 6	FEBT	Rockhill Work Session
February 19	EBT/RTM	Winter Spectacular
March 5, 6	FEBT	Rockhill Work Session
April 2, 3	FEBT	Rockhill Work Session
April 9, 10	EBT/RTM	Easter on the Rails
April 23, 24	FEBT	Rockhill Work Session
May 7	BTACMHS	Broad Top Area Coal Miners Museum Grand Reopening
May 14, 15	FEBT	Rockhill Work Session
May 21, 22	EBT	EBT Goes to War!
May 23-27	FEBT	Rockhill Work Week Session
June 4, 5	FEBT	Rockhill Work Session
June 11, 12	RTM	Johnstown Car Weekend
June 25, 26	FEBT	Rockhill Work Session
July 16, 17	FEBT	Rockhill Work Session
July 16	RTM	Trolleys and Ice Cream!
August 13, 14	FEBT	Rockhill Work Session
August 13, 14	RTM	First Day Celebration
August 17, 18, 19, 20	EBT/RTM	Orbisonia/Rockhill Homecoming
September 3, 4	FEBT	Rockhill Work Session
September 9, 10, 11	EBT	Orbisonia Antique Power Show
September 10	RTM	Car Cruise-In and Movies!
September 17	EBT	First Responder Day
September 17	RTM	Searching for Sasquatch
September 19-23	FEBT	Rockhill Work Week Session
October 7, 8, 9	FEBT	FEBT Fall Reunion
October 8	RTM	Fall Spectacular
October 8, 9	BTACMHS	Robertsdale Community Days/Coal Miner Heritage Days
October 15, 16, 22, 23	EBT/RTM	Pumpkin Festival
October 22	RTM	Phantom Trolley
November 5, 6	FEBT	Rockhill Work Session
November 25, 26, 27	EBT/RTM	Christmas in Coal Country
December 2-4, 9-11, 16-18	EBT/RTM	Christmas in Coal Country

<u>Hosts:</u>	FEBT	Friends of the East Broad Top	www.febt.org
	EBT	East Broad Top Railroad	www.eastbroadtop.com
	RTM	Rockhill Trolley Museum	www.rockhilltrolley.org
	BTACMHS	Broad Top Area Coal Miners Historical Society	broadtopminersmuseum.com



Top: EBT Foundation graphic. Bottom: Rockhill Trolley Museum graphic

VOLUNTEER RECRUITING – WE NEED YOUR HELP!

These are exciting times for FEBT. Big things are happening on the railroad, FEBT membership is at an all-time high, and fundraising is exceeding expectations! Our dedicated FEBT volunteers have made great progress in Robertsedale and Rockhill Furnace. However, we would like to do more. The progress on our many FEBT projects is limited by the number of volunteers who contribute their time. This year we would like to double the number of volunteers participating in work sessions compared to last year. This will allow us to accelerate the completion of the current projects and to start planned new ones. Additional volunteers are needed to staff the Robertsedale Museum and to help with the many offsite activities required to maintain and grow the FEBT.

We are launching a new effort to attract additional volunteers to support the FEBT activities. This will include more communication of volunteer needs and opportunities, articles about the impact and benefits of volunteering, steps to make it easier to connect new volunteers to projects, and actions to enhance the volunteer experience. We are just beginning this effort, so look for more on this soon.

Please consider if you can help this year with the preservation and rebirth of the EBT by volunteering at any of the work sessions in Robertsedale or Rockhill Furnace, or by helping with other EBT functions. A great place to start is by visiting the Volunteer page on our FEBT website: <https://febt.org/volunteer/>. This page describes the FEBT volunteer experience, includes the latest work session schedules, and has contact info for the Rockhill and Robertsedale Restoration Coordinators:

Rockhill: rhrestoration@febt.org

Robertsedale: FEBT@aol.com

This page also has instructions on completing our skills inventory: <https://febt.org/wp-content/uploads/2020/02/FEBT-skill-inventory-fillable-form.pdf>. Completing this form helps us to get acquainted with you and match your capabilities to volunteer needs. *Please note that no particular skills are needed to contribute, just an interest in restoring the EBT.* You can apply the skills you have and learn new ones from experienced volunteers.

The next two upcoming onsite volunteer opportunities will be the Rockhill Furnace work sessions on February 5 & 6 and March 5 & 6. Projects include the Combine 14 reassembly, Box Car 174 metal work, the Carpentry Shop lean-to construction, Storehouse reassembly, building paint prep, and track work. There are also many needs in Robertsedale for onsite and offsite (remote) volunteers to support planned projects and the museum, as detailed in Pete Clarke's note on Page 6.

If you would like to help with any FEBT project, have questions about volunteering, or have suggestions for our volunteer recruiting efforts, please email me at dbulman115@gmail.com.

Thank you,

Dave Bulman
FEBT Volunteer Recruiting Committee Leader

MEMBERSHIP BOX SCORE

The Friends of the East Broad Top
membership is up to
1666

ROBERTSDALE GOALS FOR 2022

What are some of our goals for 2022?

The FEBT Museum

It was really nice to have the museum open in 2021. It would seem to be a good idea to have it open again in 2022. Last year an intrepid crew of 9 volunteers managed to open the museum on 15 days. The railroad has announced its schedule for 2022. It will be open on 32 Saturdays. Last year we were only able to be open on the 2nd and 4th weekends of each month. This may sound less than ideal, but for much of the year that did match the railroads schedule, so we did pretty well.

What does it take to open the museum? Each day we need at least three trained hosts. One to oversee the gift shop, one to lead the walking tours, and one who is free to answer guest questions and oversee the handcar rides.

Things to note:

- We normally trade off duties through the day so no one has to do the same thing all day.
- We hold training days to teach our new hosts what the jobs are.
- Each new host works with experienced hosts for the first several days.
- That gets new hosts trained, comfortable with the jobs and also allows them to listen to the “EBT 101” lesson we give and to what the tour leaders say.
- You don’t have to be an expert. Heck, half of the people who visit don’t want to listen, they want to tell the stories of their past experiences with the EBT. Our hosts just need to know when to listen (and hey, you are learning when you listen).
- The gift shop uses a PC and a smart phone, so it helps if the host doing this is comfortable with those items.
- But I (Pete Clarke) am not a smart phone user and I’m not comfortable with one. Luckily, we have a step-by-step instruction manual on site. Just follow the instructions.
- Not too nimble on your feet? You can man the gift shop.
- Not too comfortable with PCs and smart phones? You can lead walking tours and talk with guests.
- Come from far away? Host on Saturday and then go ride the railroad on Sunday.
- By the way, it’s fun.
- Notice that I have not defined the training days? That’s because we’ll do it when it fits your schedule.
- Worried what days you will be assigned to host? We don’t assign days; you volunteer for them.



As Membership Guy, I get many notes expressing how the member wishes they could give more but can’t afford it. The museum gift shop makes money. So, give by volunteering to host and bringing other people’s money in.

Keep the museum alive and growing. Right now, send an email to febt@aol.com and offer to join the museum hosts. Don’t wait, send that email right now. Don’t ask what FEBT can do for you, ask what you can do for FEBT – this is it. Everyone can do this. Send that email now.

Hopper cars

We hope that the experienced car repair crew from Rockhill will find time to do some work on the hoppers next to the station. Not to get them to roll again (we kind of like them where they are), but to get them painted and lettered. Yet this work needs to be done in a way that does not interfere with their work on cars needed on the operating portion of the railroad.

Walking tour trail

The Robertsedale Museum includes a very nice walking tour of the area from the wye down to mine 1 and mine 5. We'd like to get a true walking trail built. As I write this, we have plans to meet with a member who is a landscape designer to discuss how we can make this happen. I don't know how much of this can be done with machines or how much will require guys and gals with shovels. Expect to hear some crew calls for this job. We hope to enhance the walking tour further by installing informative signs along the way. If designing these interests you, shoot me an email.



FEBT volunteers inspect the gears of the handcar during the FEBT Reunion on October 8, 2021. The hopper car display in the background is what requires painting and lettering in 2022. – Doug Davenport photo

The station

The soffit (Don't know what that is? It's the wood that you see when you walk under the large roof overhang and look up) will be removed and replaced. Expect to see crew calls for that, but perhaps more important than the job of removing and replacing it is that the old wood represents a golden opportunity to make money. We have a volunteer who has offered to make some picture frames from this wood. Frames that we could put pictures in and then sell at the gift shop. Like that idea but think that it's already taken? Remember that he's just one guy, so there's a limit on how many he can make. If you can do this, join in (send me an email). Not that good at woodwork? Grab some scraps and knock together a bird house or bird feeder (and let us sell them in the gift shop). There must be other cool stuff that could be done with this wood. If you don't tell me that you need it and want to make stuff for us to sell at the gift shop, it all goes in the trash. Now you have two reasons to send me an email.

About those picture frames

We'd like to sell picture frames with EBT/Robertsedale photos and/or artwork in them, but we need permission to use those photos and art. If you are familiar with how to track down who has the rights to photos and art, we could use your help. There, that's another job that does not require travel or heavy lifting. It does require that you send me an email offering to do this though. Now you might have three reasons to send me an email.

The old post office roof

It has a leak, but it's not an easy roof to work on. We hope to get this repaired this year. The job requires a pretty unique type of "Man lift" that allows the worker to lay down flat to be close to the roof. Also, it needs to go pretty high and reach out over the roof. If you have access to a "Man lift" that sounds like that, we'd like to hear from you.

The gift shop

We have really, really limited space for inventory. We also need to have new items to sell. So, if you want to design something for the gift shop to sell, I'd like to hear from you. We need museum hosts.

Folks, this is a 100% volunteer organization. How about volunteering? Please send me an email at febt@aol.com if you are interested in joining me, or if you have questions. Thanks. – Pete Clarke

SALTILLO STATION AND TANK UPDATE

John R. Bowie, the architect who has volunteered to draw plans for a new Saltillo station and tank, visited in January to take a fresh look at Saltillo and talk about what the railroad anticipates its needs there will be. Mr. Bowie is contributing his time and labor, and the Friends will cover incidental costs (engineering studies and the like) out of money raised in the 2022 fundraising campaign.

Mr. Bowie is a longtime FEBT member and a fellow of the American Institute of Architects. He documented the EBT's Coles tank for the Historic American Buildings survey in 2006



Jim Campbell, Brad Esposito, and John Bowie look over maps and drawings in the Orbisonia station board room in January. – Lawrence Biemiller photo

(<https://www.loc.gov/resource/hhh.pa4098.sheet?st=gallery>), and when he visited last month he brought preliminary drawings of the old Runk Road bridge, which he measured before it was replaced last year after being damaged by an over-height truck.

At the railroad, he met with Brad Esposito, the general manager; James Roslund, the director of engineering; Linn Moedinger, co-chair of the master-plan committee of the EBT Foundation board; and Jim Campbell and Bob Thomas, architects whose firm is preparing the master plan for the foundation. Lawrence Biemiller, an FEBT board member, represented the Friends.

Mr. Esposito said he would like the new station to look as much like the original as possible, but noted that it will have to meet ADA specifications. Mr. Bowie posed a number of questions that Mr. Esposito and the planners will need to consider: How many trains a day will use the station, and how long will stops be? Will tickets be sold there? How much parking will be required? Will Saltillo residents have after-hours uses for the station?

Mr. Esposito also said he hoped a new water tank would look like the previous structure from outside, and that it would need to hold 10,000 gallons. Although the original tank was fed by a spring owned by the railroad, he said he expected the replacement to be supplied by the municipal water system.

JANUARY FUNDRAISING UPDATE

This month saw the FEBT surpass 200% of its 2022 fundraising goal. 80 donations brought in upwards of \$43,000 during this reporting period. FEBT is grateful to all of our financial contributors. It should be noted that there have been quite a high number of donations recently. As a result, the 2021 tax letters are numerous. Please allow until the March 2022 newsletter is published before inquiring about where yours may be due to the high volume. Our all-volunteer treasury staff is working as fast as possible to get these out to you for your records, but your generosity has placed a heavy workload at their feet. Thank you for your patience on this matter, and once again for your contribution.

2022 Fundraising Goal:

\$100,000

January Donations:

\$43,588.31

Campaign Total:

\$207,865.50 – 207.9%

January donors*:

Keith Allen	Charlie Berger	William Best	Lawrence E. Biemiller
Charles H. Bikle	Thomas M. Billy	Kenneth D. Borg	George Botic
David Bowman	Alexander Bowser	Gregory A. Buchala	Graham Buxton
Michael & Nancy Cowles		Thomas G. Carlson	John J. Cipar
Christopher Coleman	William F. Cosgrove	Mark Delestadius	Bradley Dobbins
Eric S. Emmons	Robert Farkas	Robert R. Farquharson	Doug Fink
Donald G. Fisher	Kenneth Folwell	Jeff Goodbread	
Greg Scholl Video Productions c/o Greg & Randy Scholl			Harvey E. Heiges
Robert Hoffman	David J. Homer	Stephen Ingham	Dave Johnson
Victor V. Kidd	Bernard Kinlein	Nathan Kline	Jay L. Lightcap
Lane Littrell	David J. Luca	Michael Lynes	Garret McCabe
Dennis McCoy	Paul A. Mensing	Robert Menzies	James G. Milheim
Leon H. Miller	Craig Miller	James R. Montgomery	Houston R. Morgan
Richard B. Onorevole	Robert Pearson	Merrill Perkins	David Phillips
Craig Piper	John W. Porco	John A. Quinn	Mary Beth Redding
Paul & Dolores Reiss	Mike Rotz	Rickie Rourke	Douglas Rowland
Bruce G. Saylor	James W. Seville	Chris Spina	Dave Steinberger
Kurt Stetzer	Charles M. Sullivan	Victor Torgrimson	Bob Turner
John Van Scyoc	Elly Wefel	Ted Weidlein	R. James Whipple & Josephine Strong
Larry H. Williams	Robert Winebrenner	Scarlett Wirt	David F. Wood

In Memory of Scott Wright

Brian's Model trains c/o Brian Saul

* - All donors listed represent donations received between December 22, 2021 and January 21, 2022. Donations received after January 21 will be reported in the March 2022 issue due to press time constraints.

- Ray Davidowski and Doug Davenport

COMPANY STORE ITEM OF THE MONTH

EBT Rockhill Storehouses

Available Now **Exclusively** from FEBT Company Store!



Conceived by
Broad Top
Mountain Models



Designed and
manufactured by
banta modelworks



As true to the century-old prototype as possible, with laser cut floor, interior framing, roof rafters, walls, battens, doors, windows, and sub-roof for construction ease and excellent fit! Corrugated metal roofing material. Footprint approximately 10"x5".

\$129 regular price. Member price only \$112!

Shipping charges and sales tax are not included in the prices above. The most convenient way to order is through the FEBT Company Store website at the URL store.FEBT.org. We accept PayPal, credit cards, checks, and money orders. You may also contact the store by paper mail at FEBT Company Store, 19 W. Vandevender Street, Mount Union, PA 17066.

Help Needed at FEBT Company Store

The FEBT Company Store is a unique source for modeling supplies and literature for our members and others who are interested in the East Broad Top Railroad. It is also a key fundraiser for the FEBT.

The Company Store is in need of someone to replace Wade Woodcock as the Fulfillment Manager for the FEBT Company Store. The Fulfillment Manager is in charge of shipping merchandise when orders are received by the Company Store. This job is essential to operating the store.

Wade has handled the job for the last 5 years and has to step down for health reasons.

The job involves receiving new merchandise, storing the merchandise, and shipping the merchandise when orders are received. The current manager devotes an extra bedroom for storage space, although, if an interested candidate does not have space in his home for storage, the FEBT would pay for outside storage. Home storage is preferred however.

The job does not require order confirmation or managing payments as this is done by software. However it does require having a computer and internet access. It also does not require using personal funds to purchase supplies or pay for merchandise nor does it require going to the post office for mailing as access to Stamps.com is available.

If you are interested or have questions contact Andy Van Scyoc, FEBT President at vanscyoc@gmail.com, or Dick Ullery, Manager, FEBT Store at dickullery38@gmail.com.

ARCHIVES MOVES TO CHIEF ENGINEER'S OFFICE



The joint FEBT/EBT Foundation archives project has a new home: the spacious Chief Engineer's office on the second floor of the Orbisonia Station. The office has a large drafting table, map and drawing drawers, floor-to-ceiling shelves, and a vault crowded with documents and artifacts.

The office was most recently occupied by the EBT general manager, Brad Esposito, and the director of engineering, James Roslund. Julie Rockwell, the archivist, worked wherever she could find a seat on a given day.

The Chief Engineer's office is on the north end of the station's second floor. – Lawrence Biemiller photo

FEBT volunteers and EBT employees spent a busy January weekend cleaning and organizing the station attic, making room for a number of filing cabinets to be brought up from the second floor. That freed up two office spaces: Mr. Esposito moved into the dispatcher's cubicle, where he now works alongside the switchboard from common-carrier days (although he has not yet found a scissor phone to mount beside the switchboard), and Mr. Roslund moved to the secretary's office beside the board room. This gives Mrs. Rockwell workspace that is nearly ideal for multiple archiving tasks.

This year FEBT is supporting the archives project with a \$35,000 grant from the 2022 fundraising campaign. The money is to be matched by an equal amount raised by the foundation. – Lawrence Biemiller



General Manager Brad Esposito at the desk in the dispatcher's office. – Lawrence Biemiller photo

CANDIDATES SOUGHT FOR BOARD OF DIRECTORS ELECTION

The Nominating Committee is again seeking names, of members in good standing, for open board positions for the July 1, 2022, through June 30, 2024, time period. Any current FEBT member, in good standing, wishing to be considered for nomination may request the standard Board of Directors Questionnaire, fill it out and return it electronically before the Nominations deadline.

The deadline for submitting the Board of Directors Questionnaire is Thursday, March 31, 2022, at 4:00PM EST. Qualified candidates will be announced in the May 2022 newsletter and mail-in ballots will be sent out to the membership at that time with instructions for completing and returning the ballots. – *Curt Miller*

EBT 4TH IN *TRAINS* MAGAZINE STORIES OF 2021

Trains Magazine counted down its best storylines of 2021 as the year drew to a close. FEBT member Dan Cupper is the East Broad Top beat writer for *Trains*, and continues to publish excellent articles regularly on the progress made both by the EBT Foundation and the Friends of the East Broad Top. You can read his article on Eastie's revival placing 4th by following this link: <https://www.trains.com/trn/news-reviews/news-wire/news-wire-top-10-no-4-east-broad-tops-revival-continues/>. 20 stories were considered by the group at *Trains* who voted on the ranking, so there was stiff competition. EBT's return beat out the Big Boy operations and general steam restoration projects in terms of steam railroading stories it competed against. – *Doug Davenport*



Engine No. 14 sits in the engine shop during the 2021 FEBT Reunion as restoration continues. – Dan Cupper photo

REUNION PLANNING NEEDS YOUR HELP

The FEBT is looking for an individual to help with planning our yearly Fall Reunion. This typically takes place on Columbus Day weekend at the railroad. It is hoped that this will be a shared duty with the volunteer to be responsible to plan the event only every other year. If you are organized, like planning, scheduling, and coordinating with vendors, please reach out to us at this email address: febtreunion@gmail.com. – *Randy Lehrian*

ABOUT THIS ORGANIZATION

Friends of the East Broad Top, Inc. (FEBT) is a 501(c)(3) nonprofit, historical, and educational society dedicated to the preservation, restoration, and interpretation of the East Broad Top Railroad National Historic Landmark in Huntingdon County, Pennsylvania. It was organized in 1983 and now boasts over 1,600 members. FEBT publishes an award-winning magazine, *Timber Transfer*, and a monthly e-newsletter, and operates a museum in Robertsdale PA, the EBT's southern terminus. See febt.org/ for more information.



Hopper cars covered in snow in the Rockhill Yard in late December 2021. – Dave Camisa photo

ABOUT THIS NEWSLETTER

The Friends of the East Broad Top Newsletter is a monthly digital-only periodical. Started in 2020, it is intended to keep members and donors apprised of what the organization has done and will be doing. The FEBT Newsletter is distributed by email to the current list of members and donors, and is a privilege of contributing to the FEBT's cause of preserving, restoring, and interpreting the East Broad Top Railroad for current and future generations. The editor can be contacted at Newsletter@febt.org. Press time for information submitted is 8:00 PM Eastern time on the 25th of each month. Events occurring after the 25th, such as donations and memberships, will be considered part of the following month's information.