

---

Volume 2, Issue 8

August 2021

---

<b>In This Issue: July Board Meeting Notes</b>	<b>2</b>
<b>Company Store Item of the Month</b>	<b>2</b>
<b>Upcoming Events</b>	<b>3</b>
<b>Good Early Returns for FEBT Museum</b>	<b>4</b>
<b>July Fundraising Update</b>	<b>6</b>
<b>Trackwork Progress Map</b>	<b>7</b>
<b>EBT Archives Preserved with Friends Support</b>	<b>8</b>

---



*A painting crew consisting of Mike Wahler, Bob Jordan, and Mary Jordan prepare and prime the east face of the car shop as part of the FEBT's on-going efforts to preserve the Rockhill Shops Complex on July 10, 2021. – Eric Knepp photo*

# JULY BOARD MEETING NOTES

The FEBT Board met on July 7th and the first order of business was to accept the results of the Board Member election. You, our members voted in record numbers submitting 428 ballots. In the end, incumbents Andy Van Scyoc, Curtis Miller, and William Adams were re-elected. We also welcome new Board member Dave Buhlman aboard. Dave fills a seat vacated after many years of service by Dennis Straub. We owe Dennis much gratitude but I am also quite happy to say that he doesn't intend to leave us without his sage guidance and wisdom. I also need to thank Dave Phillips for officiating the election.

Following the general election the Board chooses its officers, and the incumbent slate of officers was re-elected in its entirety:

President:	Andy Van Scyoc	General Board Members:	Lawrence Biemiller
Vice-President:	William Adams		Ray Davidowski
Secretary:	Curtis Miller		Randy Lehrian
Treasurer:	Bill Wheeler		Nick Ozorak
			Lee Rainey

The Board also had further strategic discussions. One item we want to explore further is establishing a trust or endowment. If you have genuine experience or knowledge of such things, please contact me at [vanscyoc@gmail.com](mailto:vanscyoc@gmail.com).

– Andy Van Scyoc

## COMPANY STORE ITEM OF THE MONTH

### Company Store: New and Back in Stock!

<b>NEW!</b> Broad Top Mountain Models HO kits		<b>BACK IN STOCK!</b> EBT HOn3 2-Bay Hopper Kits	
Rockhill car shop 24"x7" footprint	\$236.00	1913 25' 9" side-dump and horiz.-door variants	SALE! \$32.50
		1914 28' 2" version	SALE! \$32.50
<b>NEW!</b> Iron Horse Engraving Fn3 1:20.3 kits		<b>BACK IN STOCK!</b> HOn3 Vulcan Trucks	
EBT miners' coach #5	\$500.00	C&BT truck frames with NWSL 24" wheel sets	\$10.00
EBT combine #16	\$500.00		
EBT baggage express #29	\$500.00	<b>NEW!</b> Scale drawing of B&S-built EBT wood hopper	\$2.00
EBT cabooses	\$400.00		
<b>NEW!</b> Funaro and Camerlengo HOn3 kit		<b>NEW!</b> Decals	
2nd generation EBT wood box car	\$40.00	2nd generation EBT wood box car HO	\$5.00
<b>NEW!</b> 3D-printed items		Caboose, redesigned, multiple era variations HO	\$5.00
EBT M-3 inspection car HOn3 (static)	\$18.25	Caboose, redesigned, multiple era variations S	\$6.00
PRR scale house at Mt. Union HO	\$29.95	Caboose, redesigned, multiple era variations O	\$10.00
PRR scale house at Mt. Union O	\$45.95	<b>BACK IN STOCK!</b> FEBT publications	
Joller Mine scale house HO	\$23.25	1983 Newsletters: 75 pp. of info pub'd before the TT	\$12.00
Brick piers from Rockhill HO (limited quan.)	\$15.00	Timber Transfer Vol. 4, No. 1 Spring 1987	\$4.25
		Timber Transfer Vol. 7, No. 1 Spring 1990	\$4.25
		Timber Transfer Vol. 8, No. 3 Autumn 1991	\$4.25

**NEW BOOK!** *Focused on Steam -- Fifty Years of Steam Locomotive Photography* by Ken Kraemer. 134 pages of all color steam photographs of many railroads. The EBT is featured on the cover with 4 pages of photographs inside. \$40.00

Shipping charges and sales tax are not included in the prices above. The most convenient way to order is through the FEBT Company Store website at the URL [store.FEBT.org](http://store.FEBT.org). We accept PayPal, credit cards, checks, and money orders. You may also contact the store by paper mail at FEBT Company Store, 19 W. Vandevender Street, Mount Union, PA 17066.

## UPCOMING EVENTS

<b>Date</b>	<b>Host</b>	<b>Event</b>
July 31, August 1	FEBT	Rockhill Work Session
July 31, August 1	RTM	Portuguese Car Weekend
August 12, 13, 14, 15	EBT/RTM	Homecoming Celebration
August 21, 22	FEBT	Rockhill Work Session
September 4, 5	FEBT	Rockhill Work Session
September 4, 5	RTM	Picnic Weekend 2021
September 11, 12	EBT	Antique Traction Show
September 18	FEBT	FEBT Museum Free Museum Day
September 18, 19	RTM	PCC Car Day 2021
September 20-24	FEBT	Rockhill Work Week
September 25	EBT	Ragtime in Rockhill
October 8, 9, 10	FEBT	Annual Fall Reunion
October 9	EBT	Fall Reunion
October 9	RTM	Fall Spectacular 2021
October 16, 17, 23, 24	EBT/RTM	Pumpkin Festival
November 6, 7	FEBT	Rockhill Work Session
November 26, 27, 28	EBT/RTM	Christmas in Coal Country
December 3-5, 10-12	EBT/RTM	Christmas in Coal Country
December 4	EBT	Christmas Tree Train

Hosts: FEBT Friends of the East Broad Top  
 EBT East Broad Top Railroad  
 RTM Rockhill Trolley Museum

[www.febt.org](http://www.febt.org)  
[www.eastbroadtop.com](http://www.eastbroadtop.com)  
[www.rockhilltrolley.org](http://www.rockhilltrolley.org)

## FEBT MUSEUM DAYS OF OPERATION

August 14, 28  
 September 11, 18, 25  
 October 9, 23

Museum Hours: 10:00 AM to 5:00 PM  
 Walking Tours at 11:00 AM, 1:00 PM, 3:00 PM





# GOOD EARLY RETURNS FOR FEBT MUSEUM

As I write this on July 25<sup>th</sup>, the museum has been open for four days of operation. I thought you might like to know some statistics:

- On June 12 we had 40 guests, made \$192 in sales, and had \$107 donated.
- On June 26 we had 13 guests, made \$36 in sales, and had \$11 donated.
- On July 10 we had 20 guests, made \$91 in sales, and had \$40 donated.
- On July 24 we had 22 guests, made \$144 in sales, and had \$56.25 donated.

The first day was perhaps a little too busy, the second day a little sparse, and the third & fourth days were just about right. If you are not so impressed by those stats, rest assured that this probably matches the visit count for any 5-year period. And money? Well, folks have been dropping by even when we are just there for work days. Add those “off day” sales and donations and so far, this calendar year we have brought in over \$1,222 in sales and donations. The guys from the company store may scoff at this, but that’s probably more than the museum has brought in over its lifetime.

We have settled on times for walking tours. They will start at 11 AM, 1:00 PM and 3:00 PM. So, you can time your visit to match.

The museum is open the 2<sup>nd</sup> and 4<sup>th</sup> Saturday of each month (through October). In August, that means that we will be open on the 14<sup>th</sup> and the 28<sup>th</sup>. We are open from 10:00 AM to 5:00 PM. Relax in air-conditioned comfort while you learn about, study, and talk about the EBT! The August bonus is that you might be able to watch as the Robertsdale station roof gets replaced, or be among the first to see the new roof. We don’t know the exact dates for the roof work yet. While you are there, ask the hosts if “hosting” is actually fun. I think you’ll be told that it is. We’d like to be open more days, we just need your help to cover the additional time for our guests.

We did get a volunteer to offer to make something from the wood that will be removed as part of the station roof repairs. But we’ll have lots more. How about volunteering to knock together some bird houses or bird feeders, or a “shingle” saying, “I helped fix the roof on the Robertsdale station”? Folks, you don’t need to be a rocket scientist and you don’t need a degree in construction to help make stuff we could sell. All skill sets and skill levels are welcome to help out.



*Bill Reynolds and Barry Wenck remove the existing fascia boards on the north face of the Robertsdale station. – Pete Clarke photo*

Would you like to renew your membership? Do you want to pay with your credit card, but don't want to use the internet? You can now renew using your credit card at the museum. Stop by and the host on duty will be happy to help!



*The north side of the Robertsdale station looks much better with the new fascia boards installed and primed. – Pete Clarke*

Robertsdale is not all about money coming in. We are spending it too! On Saturday July 24<sup>th</sup>, a crew consisting of Bill Reynolds, Mark Reese, and Barry Wenck spent the day working on replacing the fascia boards on the station. They got all the old stuff removed. They cleared out multiple bird nests, several (fortunately no longer in use) bee's nests, and scared the heck out of several bats! Luckily Bill had come with his "mobile scaffold device" which made the work go much quicker. As you can see, they got the new boards primed and mounted on one side. Our work in Robertsdale seldom requires the massive number of workers that are needed in Orbisonia/Rockhill Furnace, so we seldom use the spiffy Signup Genius system they use, but if you'd like to help, please send me an email and I'll pass your name and email on to Bill and he'll contact you when we need assistance. We'd be pleased to add you to the crew. See, there's yet another reason to visit Robertsdale!

#### Summary:

Lots of information you can study, informative walking tour, cool stuff to purchase, two fine museums to visit (you didn't forget about the Broad Top Area Coal Miners Museum up the street, I hope), and a fun way to help FEBT. It really is about time to visit Robertsdale.

– Pete Clarke

# JULY FUNDRAISING UPDATE

The Friends of the East Broad Top received just over \$5000 during the July reporting period. 33 donors chipped in to bring the total for the 2021 Fundraising Campaign to a dollar figure of over \$150,000. The Storehouse stabilization, Carpentry Shop work, and a pending new roof on the Robertsedale station are all items these funds have gone towards already. Please keep checking back to this newsletter to see how your donations will continue to preserve and restore the East Broad Top Railroad.

There are several ways to donate. Donations can be made online at <https://febt.org/donate/> using the Company Store portion of the website, which accepts credit cards and PayPal payment methods to contribute. Donations may also be made by mailing a check, payable to FEBT, to:

FEBT Fundraising Treasurer  
C/O Ray Davidowski  
P.O Box 81  
Sarver, PA 16055

## 2021 Fundraising Goal:

\$78,000

## July Donations:

\$5,207.00

## Campaign Progress:

\$150,288.31 – 192.7%

### July Donors\*:

Jerry L. Allison	Larry Altoff	David R. Bales	Chuck Bender
Kendrick D. Bisset	George Botic	Alexander Bowser	Richard L. Burkholder
Ryan Confair for Craig Confair		Joe Davis	Bradley Dobbins
Ian Donaldson	Douglas E. Fink	Hershey Groff	Richard Heizmann
John Hood	Sheldon E. Hoover	Dave Johnson	Victor V. Kidd
Richard J. Kilday	Robert Livrone	Ted Miskell	J. Harold Mohler
Michael D. Moore	Howard Morgan	Louis Pane	Ann R. Sparrough
Alan Thomas	Graham Todd	Norman A. Wagner	Ted Wiese
Brian Wolfe	BNSF Railway on behalf of Brian Yang		

\* - All donors listed represent donations received between June 22, 2021 and July 21, 2021. Donations received after June 21 will be reported in the September 2021 issue due to press time constraints.

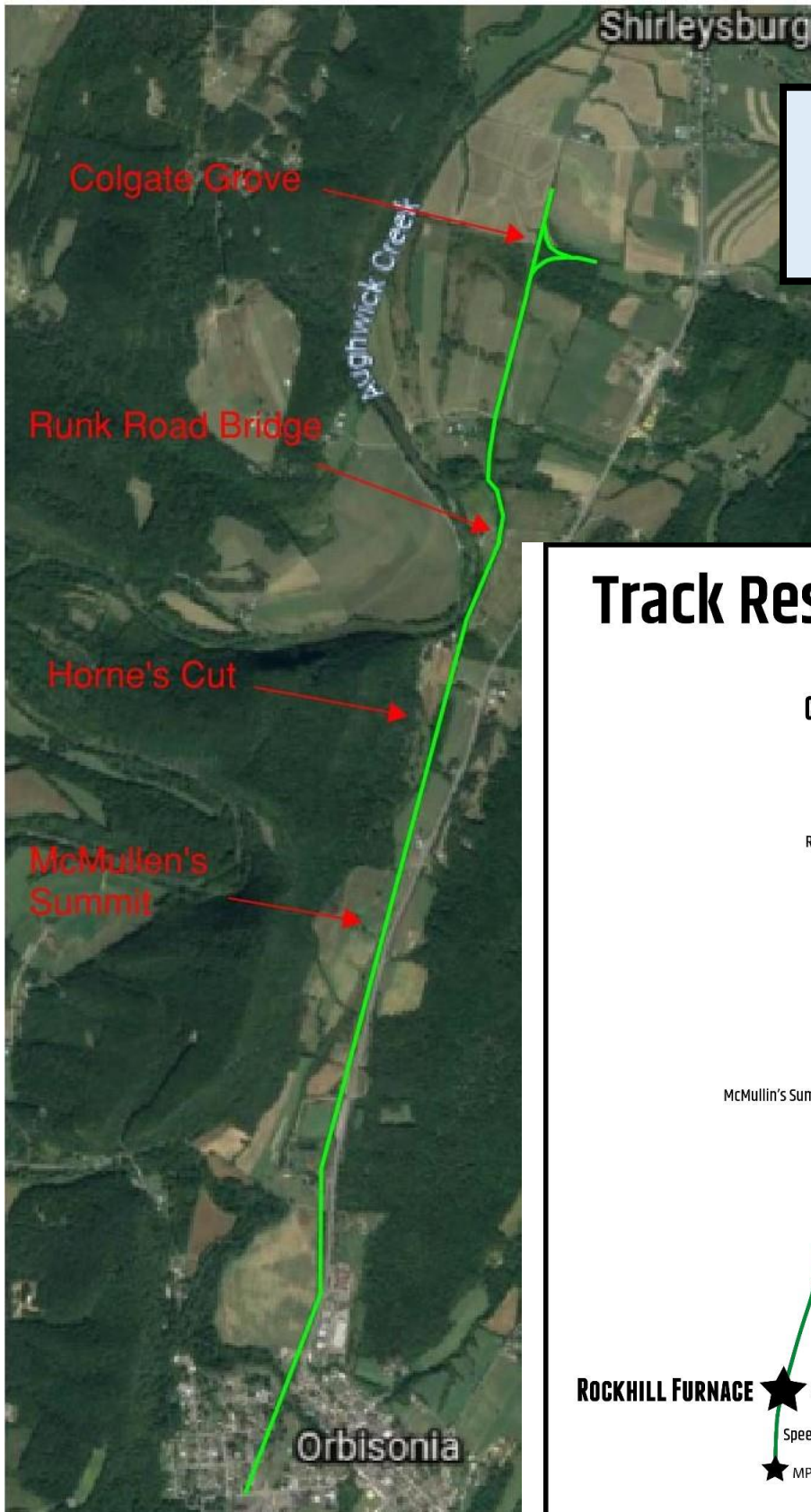
- Ray Davidowski and Doug Davenport

## MEMBERSHIP BOX SCORE

The Friends of the East Broad Top  
membership is up to  
**1609**



# TRACKWORK PROGRESS MAP

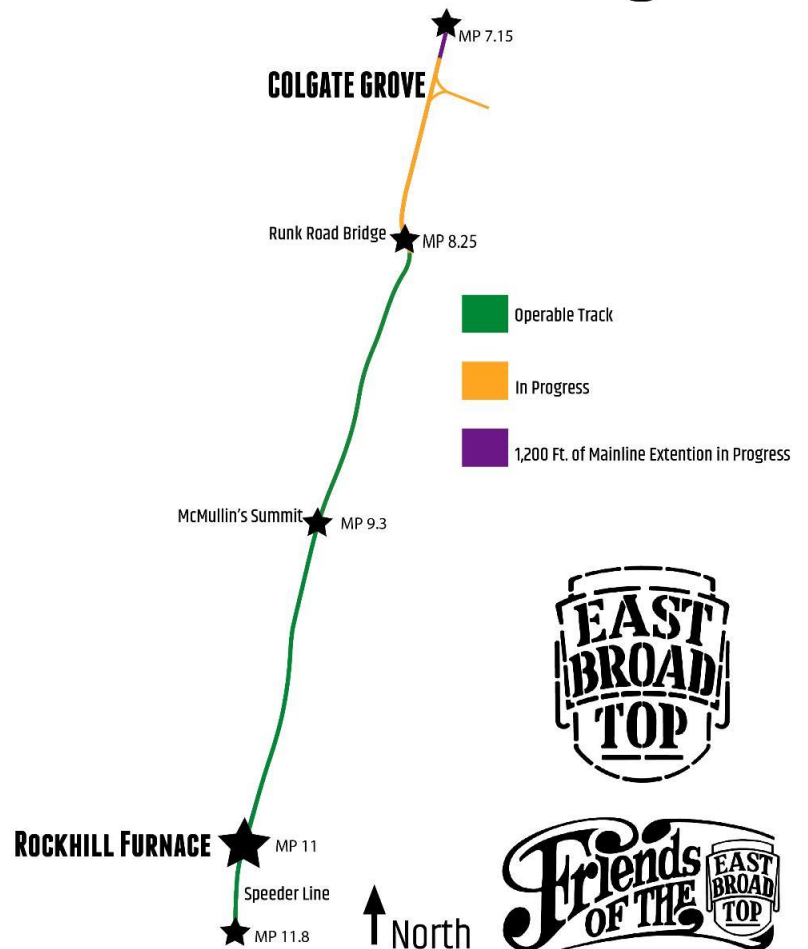


## TRACKWORK BOX SCORE

North of Rockhill, track restoration work is now complete to just north of the Runk Road Bridge, 2.8 miles from the Orbisonia depot.

*Left: Map overlay by Doug Davenport  
Below: Graphic by Jonathan Smith*

## Track Restoration Progress



# EBT ARCHIVES PRESERVED WITH FRIENDS SUPPORT

The outstanding and generous response to our 2021 fund-raising campaign allowed us to add some additional items to the list of projects we would support this year. As previously reported in this newsletter, one of these was the kick-off of an archival program.

The goal of this program is to preserve, catalog, and eventually make available to researchers the enormous body of EBT materials stored in Rockhill. The FEBT collections are also planned to be integrated in the same search and retrieval system.

The Friends and the Foundation each contributed \$10,000 to get this program underway. The money allowed the Foundation to hire Ms. Julie Rockwell, an experienced archivist and graduate of the Museum Studies and Digital Archives Master's program at Johns Hopkins, for a part-time engagement. Brought on board as well was Mr. Sammy Bellin, a senior history major at Juniata College and summer intern. They started May 27<sup>th</sup>.

Julie and Sammy are well along towards completing a mammoth task: creating an inventory of EBT records and artifacts stored on three floors of the depot, in the stone house, the storehouse, and more. Their so-called "spot inventory" provides itemized documentation and location for items such as ledgers, maps, blueprints, photographs, ephemera, loose files, folders, and correspondence. (One file was found to hold many years of FEBT's *Timber Transfer* magazine!) 3D museum-like objects were individually inventoried or collectively photographed for reference.



*EBT historian Lee Rainey and summer intern Sammy Bellin examine a volume of redeemed bond interest certificates from the 1880s. – Virginia Rainey photo.*



The volume of records is estimated to be 3500-4500 linear feet. That's not counting a variety of items such as Christmas decorations and a Santa suit that had to be stored "somewhere" at some point in the past century and ended up among the business records. An obstacle to completing the initial inventory is that, in some parts of the depot, records are piled so high that the top levels are literally unreachable! Retrieving these records safely is scheduled as an FEBT work session project.

The inventory also measured temperature and humidity in each area where records are stored. Steps are already being taken as needed to bring these environmental factors in line with good archival practice.

Once the inventory is complete, work will begin on conserving the most endangered items. Some will be protected with archival-quality storage containers. Others will be digitized to create archival-quality files. Some of this scanning work will be done onsite, but very large items and fragile books will require special equipment and may need to be outsourced.

Julie and Sammy are assisted in their work this year by an advisory team representing the FEBT, the EBT Foundation, Juniata College, and several archival and museum experts. FEBT members acting in the advisory role have included Pete Clarke, Jane Clarke, Scarlett Wirt, Curt Miller, Lee Rainey, and Andy Van Scyoc.

– Lee Rainey



*A variety of parts removed from the "engineer's cubby" of the Storehouse are now organized on the Machine Shop floor while the Storehouse receives restoration work. – Eric Knepp photo*

## ABOUT THIS NEWSLETTER

The Friends of the East Broad Top Newsletter is a monthly digital-only periodical. Started in 2020, it is intended to keep members and donors apprised of what the organization has done and will be doing. The FEBT Newsletter is distributed by email to the current list of members and donors, and is a privilege of contributing to the FEBT's cause of preserving, restoring, and interpreting the East Broad Top Railroad for current and future generations. The editor can be contacted at [Newsletter@febt.org](mailto:Newsletter@febt.org). Press time for information submitted is 8:00 PM Eastern time on the 25<sup>th</sup> of each month. Events occurring after the 25<sup>th</sup>, such as donations and memberships, will be considered part of the following month's information.