
Volume 2, Issue 7

July 2021

In This Issue: FEBT Museum Opens	2
Board Meeting Notes	3
Bonus Fundraising Money Well Used	4
Upcoming Events	5
FEBT Museum in Search of Rolling Golf Bag	5
Company Store Item of the Month	6
Trackwork Progress Continues Northward	7
Trackwork Progress Map	8
Storehouse Receives Additional Attention	9
June Fundraising Report	10



The Old Post Office building is adorned with decorations and a full parking lot on the morning of June 12, 2021, which was Opening Day for the FEBT Museum. The Robertsdale Depot, which formerly housed the museum, is in the background. – Doug Davenport photo

FEBT MUSEUM OPENS

Saturday, June 12th was opening day for your FEBT Museum in Robertsdale, PA. Over 30 folks signed in and we know that many did not bother to sign in. So, we feel comfortable reporting that we had over 40 folks visit the museum that day. Two guest hosts, Steve Jackson and Chris Walker, joined Jane Clarke and me to welcome guests. Please consider joining our team of hosts; the more hosts we have, the more days we can be open.

Guests enjoyed the new information panels designed and built by Bill Adams and his crew. All who picked up our mine car links and pins were amazed at how heavy each piece of that system is and began to understand why it might be that so many early train crewmen were missing fingers (and those are just for small, lightweight mine cars. I shudder to think about full sized railroad links and pins).

Using the huge area map, we discussed why the EBT was built, why it was built where it was, and why each part was built when it was. Three times through the day we had walking tours of the Mine 1 and 5 area. 14 folks joined those tours.

Visitors purchased mouse pads, note cards, hats, shirts, mugs, magnets, back issues of *Timber Transfer*, a book, and



A view of the north face of the Robertsdale Depot structure, which will receive a new roof this summer. – Jane Clarke photo



cold soda (the only place in town you can buy a cold soda!). Of that list of items, only the back issues of *TT* are also available on the FEBT company store web site – you really should come see the museum! They also made generous donations. Rest assured, none of that money stays in the empty building between open days. It's all been transferred to the correct FEBT bank account. The average cash sale was \$6, the average credit card sale was \$17.70. Does that prove it was worth it to get internet access and accept credit card sales? I think it is a pretty good sign.

Some of our visitors also went over to see the Broad Top Area Coal Miners Museum. There's more to see in Robertsdale than what you might think. A – Please visit. B – Please allocate enough time to “do it right.” C – It's OK to come back again!

A crowd gathers in the museum's gift shop area discussing a variety of EBT-related topics on Opening Day. – Doug Davenport photo

Speaking of coming back again, since opening day Bill Adams has installed several audio features. So, come read the informational panels, and push those red buttons!

Not entirely for altruistic motives, the museum is a little bit “greener” than before. The track lighting system was installed with halogen light bulbs. Those burn at about 10,000 degrees (perhaps an exaggeration). We’ve learned that when the bulbs fail, they have a high tendency to melt the glue that holds the bulb to the metal screw base. When that happens, you get a very heavy thing that is 10,000 degrees, falling down, perhaps on someone. Those bulbs have now all been replaced with cool, more efficient LED type bulbs. (No, no one has been hit but man those bulbs burned, even through my gloves!)

By the time you read this we will have had our second day of operation – Saturday June 26. On that day we’ll have had a special guest, Vagel Keller, lead our afternoon walking tour. This newsletter will come out after that, so you’ve missed it. But the point is that, as if the “normal” stuff were not enough, we do have special events planned. Robertsdale: you gotta be there!

Want to help but don’t think you are host material? Woodworker? Soon the roof on the station will be replaced and there will be a lot of wood replaced. The portions of the old wood that are not rotted could be used to create unique items that could be sold at the gift shop. How about making a bird house? Make a picture frame? If you have another idea, I’d love to hear about it. – *Pete Clarke*



EBT Foundation Chairman Wick Moorman discusses the Robertsdale Museum displays on June 8th. The Foundation Board members were all overwhelmed by what has been accomplished by Friends volunteers in Robertsdale and the quality of the Museum itself. – Andy Van Scyoc photo

BOARD MEETING NOTES

The FEBT Board continues to meet monthly. The meeting on the 5th of May was more strategically focused than many. As you have likely read, we have begun a partnership with the EBT Foundation on an immense archiving undertaking. The Board has also spent hours reviewing the results of the survey many of you responded to this Spring. The Board is also exploring options for a volunteer development program. You will hear more about these in future Newsletters and elsewhere.

In June, the Board authorized \$35,000 for replacement of the Robertsdale Station roof and related materials. Covert Roofing, Inc. is on contract to do the work in August. The Board also discussed the ongoing effort to digitize all issues of



the Timber Transfer. Lastly, the Board began planning the 2022 Fundraising campaign discussing goals and target projects.

On June 7 and 8, the EBT Foundation Board had a two day session to kick off their master planning efforts. FEBT was invited to participate, so President Andy Van Scyoc and Vice-President William Adams attended. The discussion further demonstrated the Foundation's passion and enthusiasm for all things EBT and their drive to maintain as much of the railroad and authenticity as possible. The second day was a bus tour of the entire EBT property from Robertsdale to Mt. Union, during which an emphasis was placed on the tremendous contributions of the FEBT and how the FEBT will remain a valuable partner in all aspects of preserving the EBT. – Andy Van Scyoc

Left: On June 8, 2021, the EBT Foundation Board of Directors took an inspection trip with the M-1 and Parlor Car 20 to Colgate Grove, marking the first passenger run to the Grove in nearly a decade. The FEBT volunteer track crew has labored side-by-side with the railroad's own crew to rebuild much of the mainline and relay both legs of the Colgate Grove wye entirely. – Andy Van Scyoc photo
Below: The wet concrete of the freshly poured new concrete floor in the Carpentry Shop glistens in the sunshine on June 26, 2021. – Brad Esposito photo

BONUS FUNDRAISING MONEY WELL USED

Thanks to the generosity of the FEBT donors, additional projects are able to be accomplished this year. As published in the June 2021 issue, the Carpentry Shop was to get a new concrete floor as a “bonus” project. On June 26th, the concrete for this floor was poured. Once the concrete cures, which typically takes seven to 21 days depending on the type of concrete and humidity levels, the planned woodworking equipment can be moved in. The Carpentry Shop will again become a functional woodshop where FEBT volunteers will have a complete shop to rebuild



windows and other fine woodwork alongside the railroad staff. The Carpentry Shop project is a prime example of the great working relationship between the EBT Foundation and the Friends of the East Broad Top. – Doug Davenport

UPCOMING EVENTS

Date	Host	Event
July 3, 4	RTM	Happy Birthday America 2021!
July 10, 11	FEBT	Rockhill Work Session
July 17	RTM	Ice Cream Social
July 31, August 1	FEBT	Rockhill Work Session
July 31, August 1	RTM	Portuguese Car Weekend
August 12-15	EBT/RTM	Homecoming Celebration
August 21, 22	FEBT	Rockhill Work Session
September 4, 5	FEBT	Rockhill Work Session
September 4, 5	RTM	Picnic Weekend 2021
September 11, 12	EBT	Antique Traction Show
September 18	FEBT	FEBT Museum Free Museum Day
September 19	RTM	PCC Car Day 2021
September 20-24	FEBT	Rockhill Work Week
October 8, 9, 10	FEBT	Annual Reunion
October 9	EBT	Fall Reunion
October 9	RTM	Fall Spectacular 2021
October 16, 17, 23, 24	EBT/RTM	Pumpkin Festival
November 6, 7	FEBT	Rockhill Work Session
November 26, 27, 28	EBT/RTM	Christmas in Coal Country
December 3-5, 10-12	EBT/RTM	Christmas in Coal Country
December 4	EBT	Christmas Tree Train

Hosts: FEBT Friends of the East Broad Top
 EBT East Broad Top Railroad
 RTM Rockhill Trolley Museum

www.febt.org
www.eastbroadtop.com
www.rockhilltrolley.org

FEBT MUSEUM DAYS OF OPERATION

July 10, 24
 August 14, 28
 September 11, 18, 25
 October 9, 23



FEBT MUSEUM IN SEARCH OF ROLLING GOLF BAG

The Robertsedale museum has installed a golf course. No, wait, we have not done that yet...

But we do think that we could make use of an old, no longer needed golf club bag and a golf bag cart (not the kind you ride in, the little two wheeled type you pull). If you happen to have those laying around unused, we'd be happy to give them a new home.

"Say what" you say? We have numbered signposts that we put out each day for the walking tour. Having a bag to contain them and a thing with wheels would sure make it easier to take them out and bring them in each day.

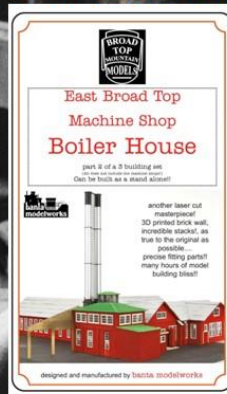
Contact Pete Clarke at febt@aol.com if you'd like to donate either or both of these. – *Pete Clarke*

COMPANY STORE ITEM OF THE MONTH

**Purchase Broad Top Mountain Models
HO Scale East Broad Top Laser-Cut Structure Kits
Through the [FEBT Company Store](#)!**



Machine Shop: \$280 FEBT Member Price: \$238



Boiler House: \$147 FEBT Member Price: \$124.95



Car Shop: \$230 FEBT Member Price: \$195.50

Features: As true to prototype as possible, can be built as the EBT shops complex OR stand-alone structures for a free-lance road, laser-cut floors, framing, walls, windows, battens, 3D printed parts, corrugated metal roofing and more! Click [here](#) for build videos from Michael McCarville

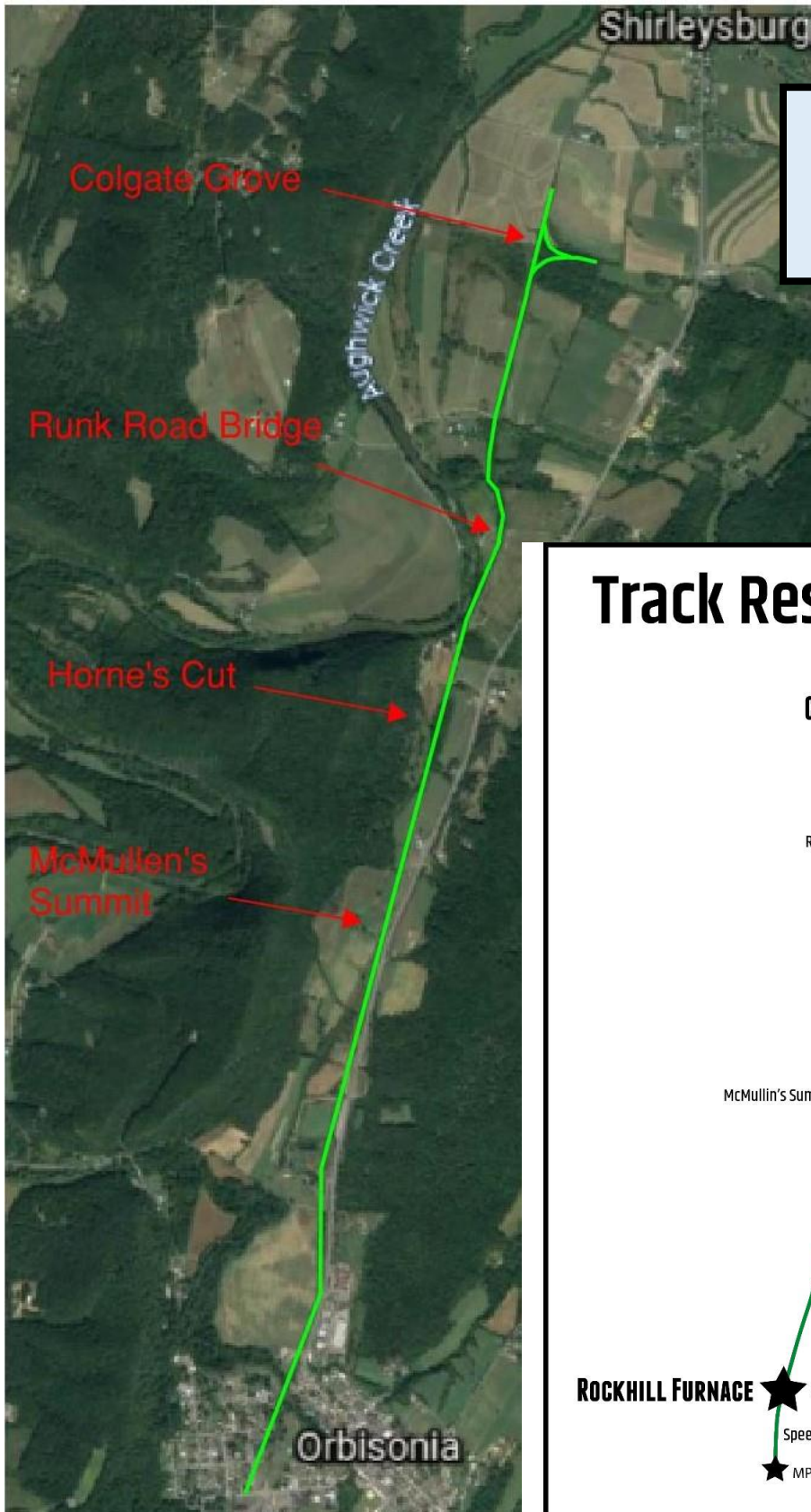
TRACKWORK PROGRESS CONTINUES NORTHWARD

As you read above and in previous issues, the FEBT track crew continues to work alongside the EBT Foundation track crew. The short term track work objective is to return the tourist era portion of the main line to service for train operations. A great amount of this goal has been accomplished to date, but some work remains. As you read last month, the main line was returned to service as far north as the Runk Road bridge. The FEBT track crew has been invited to join the Foundation track crew during the week as their schedules allow. Over the last several weeks, progress has continued, mostly at Colgate Grove. The combined efforts of both organizations have produced a completed wye at the Grove over the past month. Tie replacement and ballasting work remains to be done on the main line between the Runk Road bridge and Colgate Grove, a stretch of just over a mile which includes the S-curve immediately north of Runk Road. However, work trains are able to traverse the rails at reduced speed in the meantime. No formal restoration date has been issued, but the progress is rapid and evident. It is reasonable to expect full tourist era track restoration this summer. – Doug Davenport



This aerial view from June 12th shows the Aughwick Valley scenery as well as the track work progress at Colgate Grove. This view looks southwest over the area. To the right of this photo is the area where the EBT Foundation is extending the restoration 1200' northward to allow for turning longer trains in the future. – Lance Myers photo

TRACKWORK PROGRESS MAP

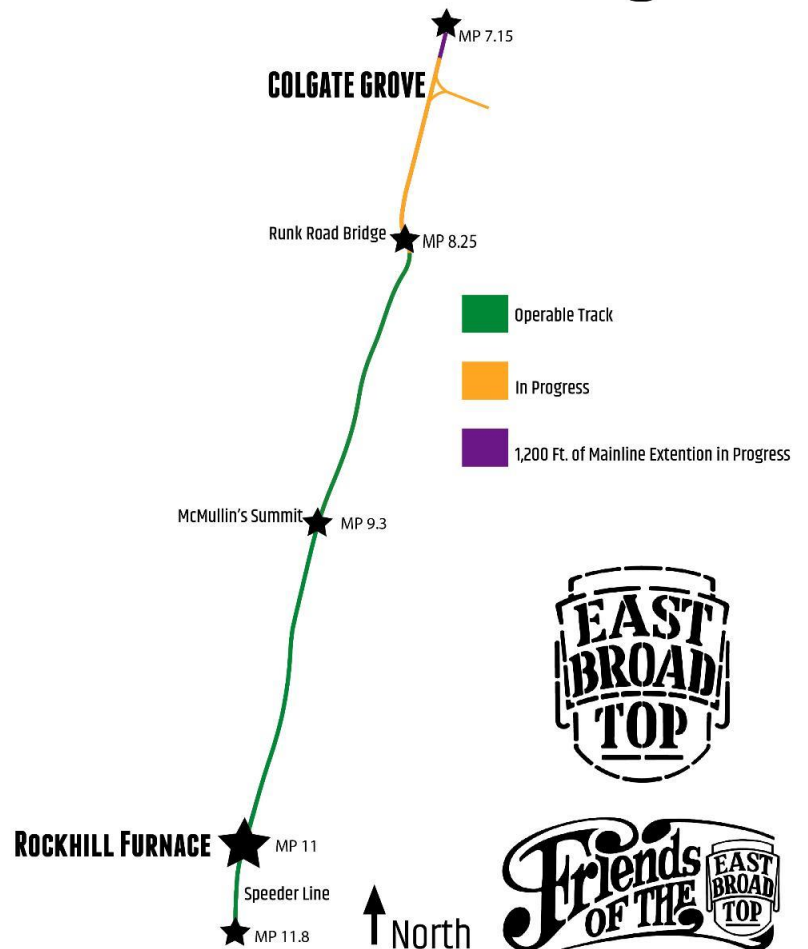


TRACKWORK BOX SCORE

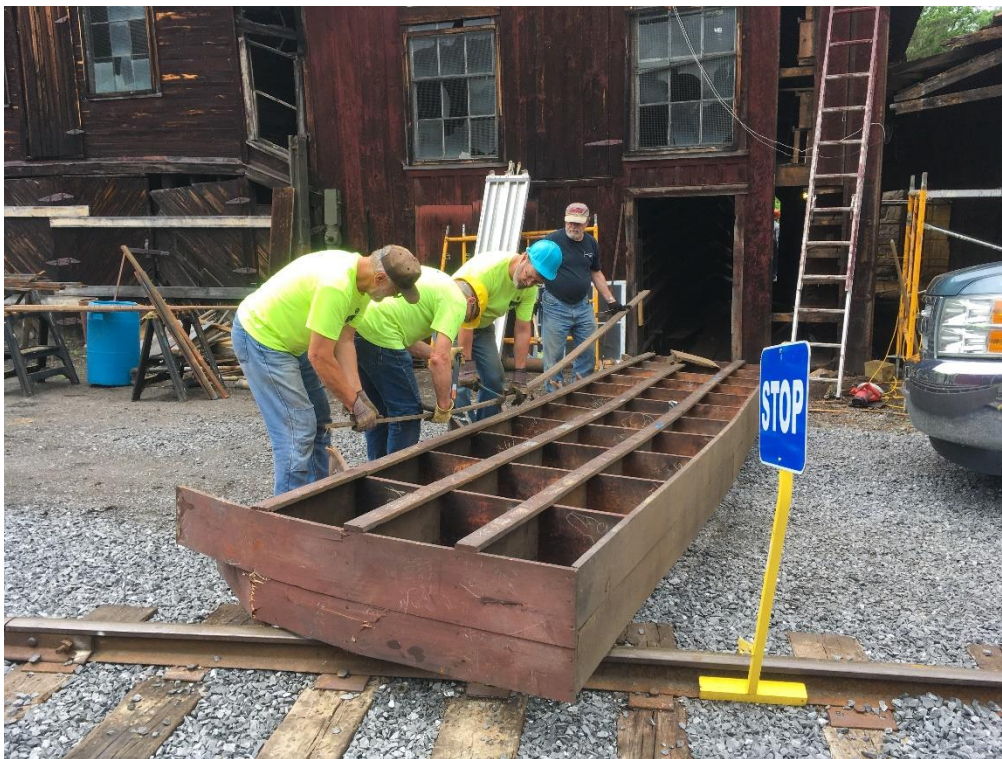
North of Rockhill, track restoration work is now complete to just north of the Runk Road Bridge, 2.8 miles from the Orbisonia depot.

*Left: Map overlay by Doug Davenport
Below: Graphic by Jonathan Smith*

Track Restoration Progress



STOREHOUSE RECEIVES ADDITIONAL ATTENTION



Work on emptying the Storehouse continued during the June Rockhill work session. The Storehouse is being prepared to be stabilized this summer by Woodford Bros., who have assisted with shoring up several other structures on the East Broad Top property. With the building having been cleared of the parts stored inside during the FEBT Work Week in May, the shelter which had been constructed between the Storehouse and the Stone House could be removed. The wooden parts bins inside the Storehouse could also be taken out of the structure.

Above: The storage bins from inside the Storehouse are removed to allow for building stabilization. Right: The lean-to between the Storehouse and Stone House is being disassembled.
– Eric Knepp photos



JUNE FUNDRAISING REPORT

The FEBT achieved another large fundraising sum for the June reporting period. 46 donations contributed in excess of \$10,000 for the month. As you read above, these donated funds are financing a number of different projects to reserve and restore the East Broad Top Railroad.

There are several ways to donate. Donations can be made online at <https://febt.org/donate/> using the Company Store portion of the website, which accepts credit cards and PayPal payment methods to contribute. Donations may also be made by mailing a check, payable to FEBT, to:

FEBT Fundraising Treasurer
C/O Ray Davidowski
P.O Box 81
Sarver, PA 16055

2021 Fundraising Goal:

\$78,000

June Donations:

\$10,478.00

Campaign Progress:

\$145,081.31 – 186.0%

June Donors*:

John J. Atherton	Jan & Terry Bender	Philip L. Berneburg	Alexander Bowser
Matthew V. Cesare	Hal Clawson	Ben Cornelius	Elizabeth & Bruce H. Courter
Alton P. David	Bernd H. Fanghanel	Gary Faulkner	Douglas Fink
Frank J. Harker	John Hiller	Wayne E. Johnson	Victor V. Kidd
Allen W. Landis	Richard Lind	Byron L. Locke	Garret McCabe
Thomas E. McMaster	Craig Miller	Ted Ostrander	Jack Perry
James W. Pifer	Brian Poole	Raymond S. Richards	Jennifer Rygel
Ronald P. Saputski	Bruce G. Saylor	Raymond E. Schmitt	Robert Sembach
Robert D. Shotsberger	Alan Sinclair	Thomas Spangler	Waldemar B. Stack
Michael Swinnerton	Adam Watson	John F. Wheeler	David S. Whitaker
Charles Wikert	Sam W. Wilder	James Zumbo	

In Memory of Leighton “Lee” B. Carlson:
Duane E. Mellor

In Memory of Charles Rogers:
Robert & Sandra Hochwald

In Memory of Murray “Mike” White:
Vincent Cipriani

* - All donors listed represent donations received between May 22, 2021 and June 21, 2021. Donations received after June 21 will be reported in the August 2021 issue due to press time constraints.

- Ray Davidowski and Doug Davenport

MEMBERSHIP BOX SCORE

The Friends of the East Broad Top
membership is up to
1586



This June 12th aerial photo of Colgate Grove shows the stark contrast between the existing track conditions and the condition of the rebuilt trackage, which FEBT has contributed heavily to. – Lance Myers photo

ABOUT THIS NEWSLETTER

The Friends of the East Broad Top Newsletter is a monthly digital-only periodical. Started in 2020, it is intended to keep members and donors apprised of what the organization has done and will be doing. The FEBT Newsletter is distributed by email to the current list of members and donors, and is a privilege of contributing to the FEBT's cause of preserving, restoring, and interpreting the East Broad Top Railroad for current and future generations. The editor can be contacted at Newsletter@febt.org. Press time for information submitted is 8:00 PM Eastern time on the 25th of each month. Events occurring after the 25th, such as donations and memberships, will be considered part of the following month's information.